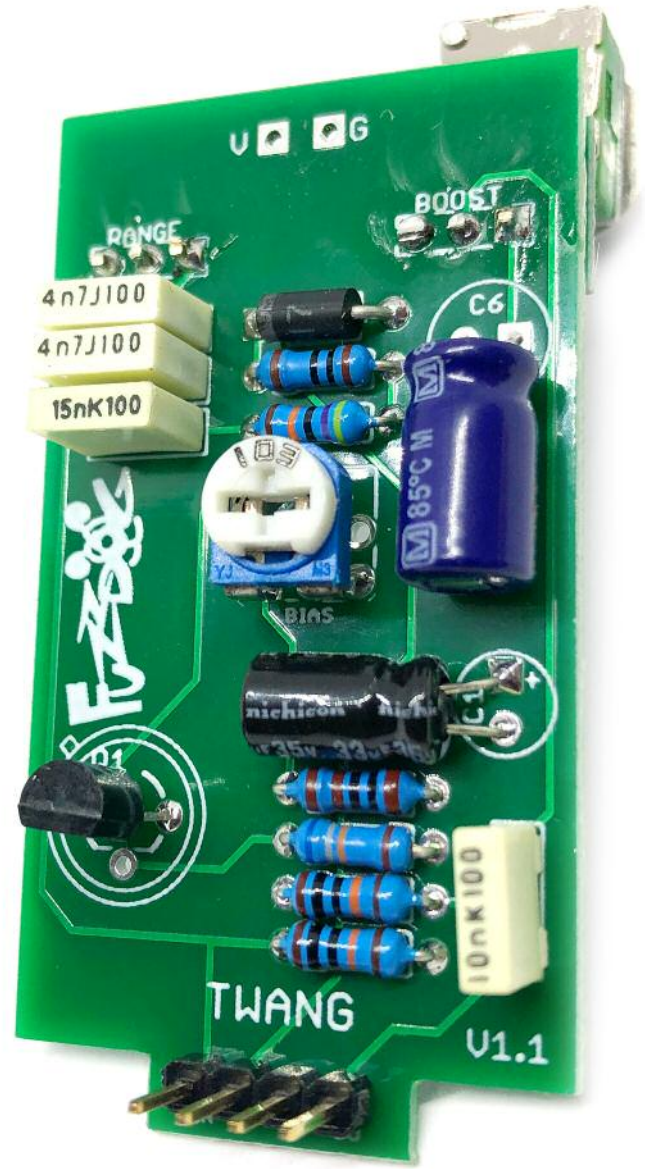


FUZZPUP



Twang

Mini box of boutique boost



IMPORTANT

Before you start...

Grab the general build doc that covers all FuzzPup V2 builds.
Most of the information you need for this build is in there.

Read it? OK, carry on.



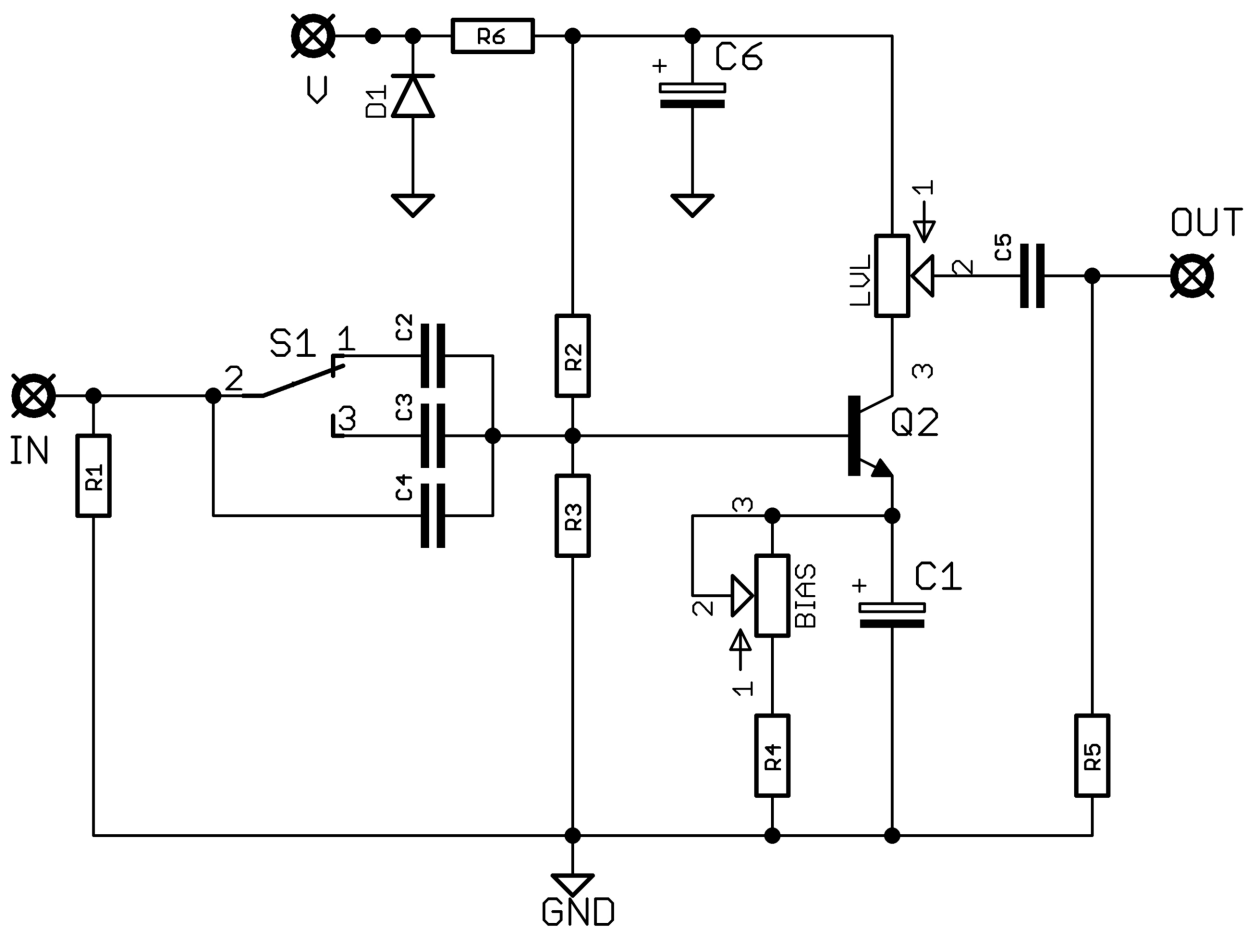
FuzzPups v2

Lovely little boxes of joy with a
standardised build pattern



Contents of this document are ©2022 Pedal Parts Ltd.
No reproduction permitted without the express written
permission of Pedal Parts Ltd. All rights reserved.

Schematic + BOM



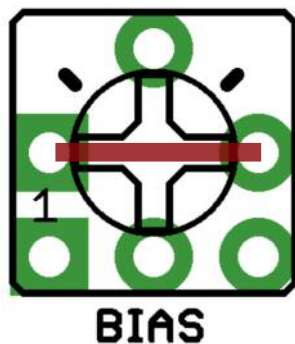
- R1 100K
- R2 470K
- R3 68K
- R4 1K
- R5 100K
- R6 10R

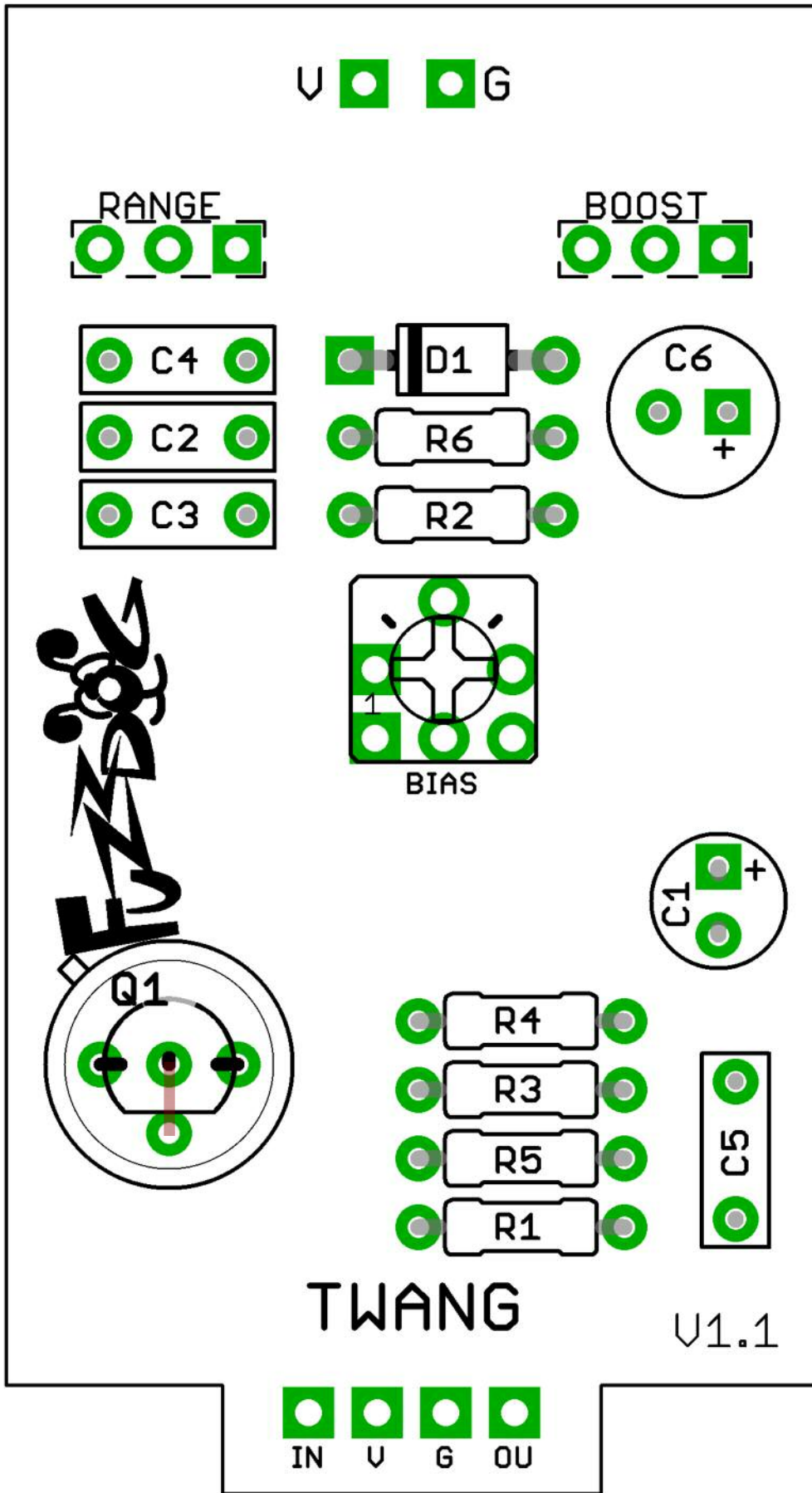
- C1 33u elec
- C2 4n7
- C3 82n*
- C4 4n7
- C5 10n
- C6 100u elec

- Q1 Your choice**
- D1 1N4001
- LVL 10KA
- BIAS 10K Trim
- S1 SPDT on-off-on

*The three-way toggle switch gives you three frequency ranges for the boost. The centre position is the tightest, cutting most bottom end. With switch to the left you bring in C2 in parallel with C4, giving you just under 10n on the input, allowing more bottom. To the right you have C3 in the mix. With the standard value here you have around 87nf, which is pretty much full range for guitar. Our opinion is - myeh. It's just a normal boost, and to be honest it sounds a bit overwhelmed by the extra range. We recommend 15-22n here to make sure some bottom is still being filtered.

**You can use pretty much any NPN BJT here. We use 2N3904 for a silicon option, and have tried it with AC176 for germanium. We've included a bias trimmer in the design so you can tweak the bias of the transistor. In the original circuit this is a fixed 4K7 resistor. If you'd rather stick with that, replace R4 with 4K7 and add a jumper in place of BIAS.



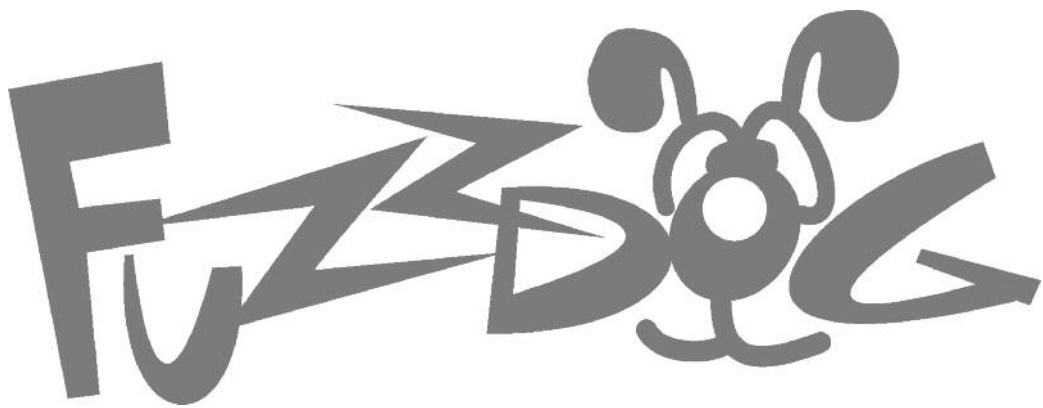


The two centre column pads for the transistors are tied together on the PCB. We've added the extra for easier placement of both straight and triangular footprint parts.

Pads are, left to right: Emitter, Base, Collector

Everything else you need is in the
general build doc you've already read.

Head back to that.



FuzzDog.co.uk