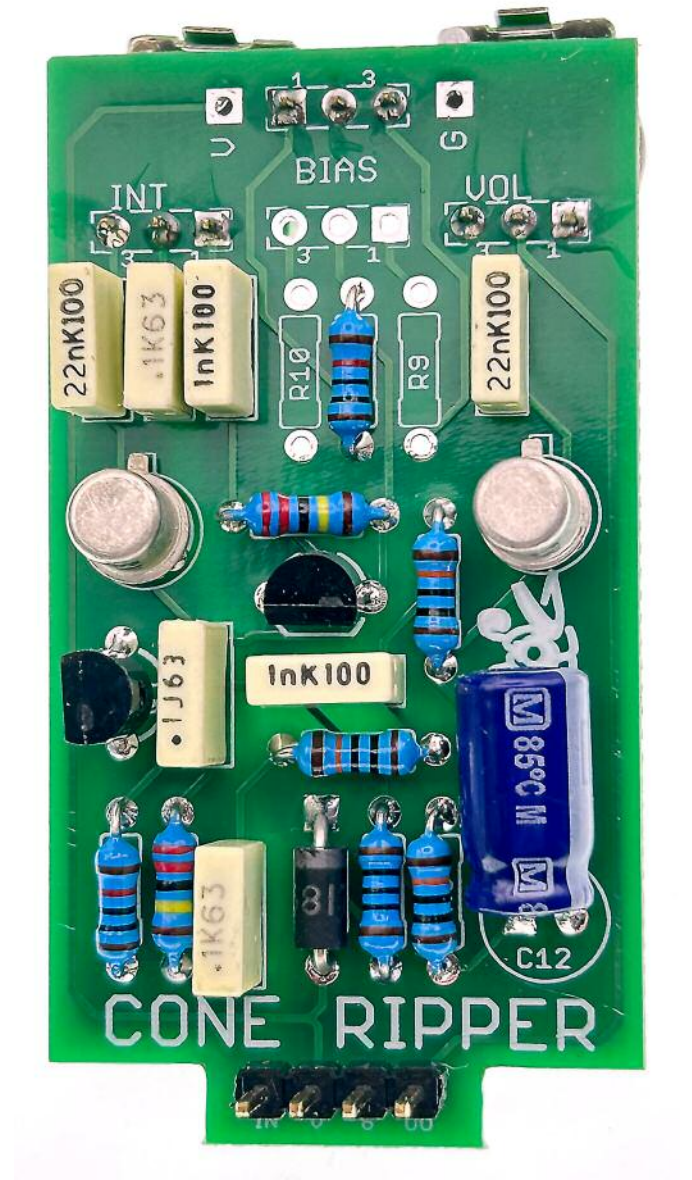


Fuzz Pup



Sunny-T

Into the realms of a cranked
Sunn Model T amp



IMPORTANT

Before you start...

Grab the general build doc that covers all FuzzPup V2 builds.
Most of the information you need for this build is in there.

Read it? OK, carry on.



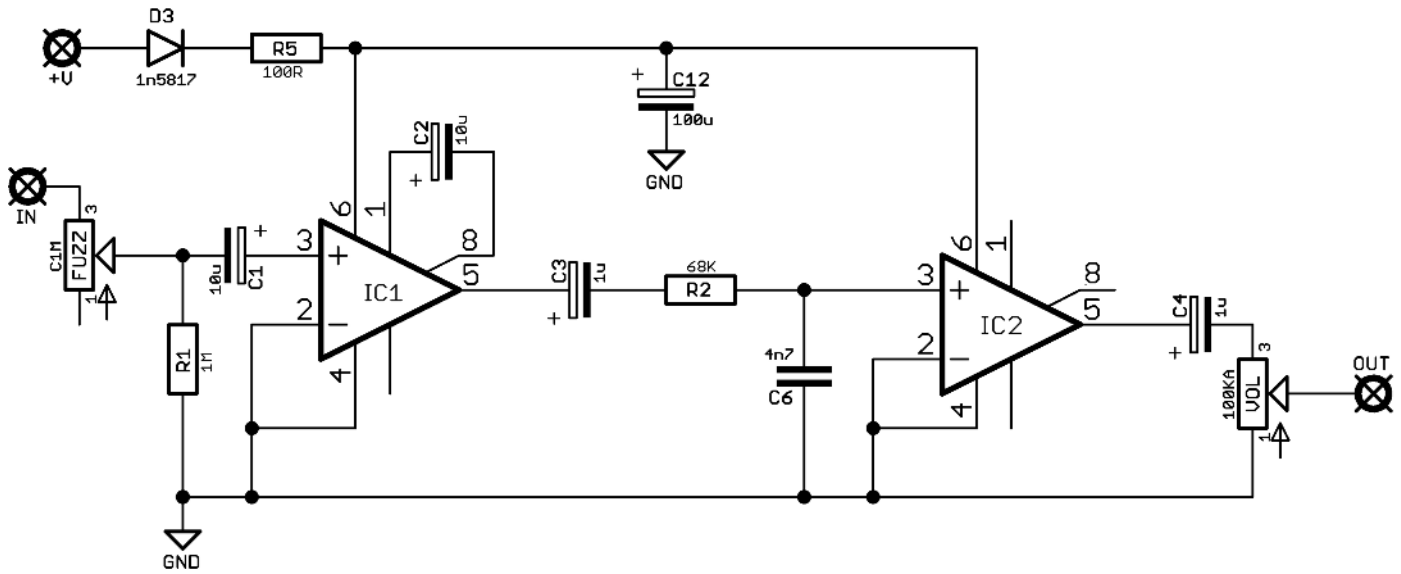
FuzzPups v2

Lovely little boxes of joy with a
standardised build pattern



Contents of this document are ©2022 Pedal Parts Ltd.
No reproduction permitted without the express written
permission of Pedal Parts Ltd. All rights reserved.

Schematic + BOM



R1 1M
R2 68K
R5 100R

C1 10u elec
C2 10u elec
C3 1u elec
C4 1u elec
C6 4n7
C12 100u elec

D3 1N5817

IC1-2 LM386-N1

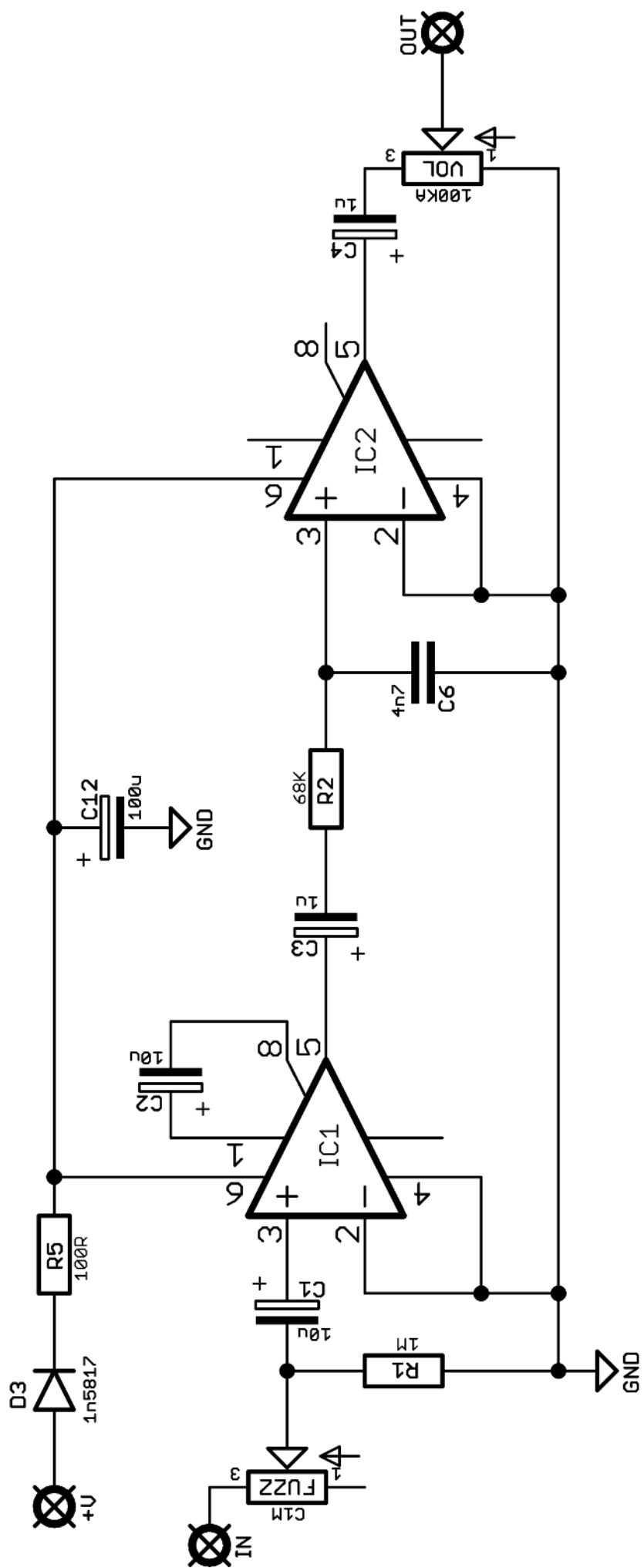
FUZZ 1MC/Jumper

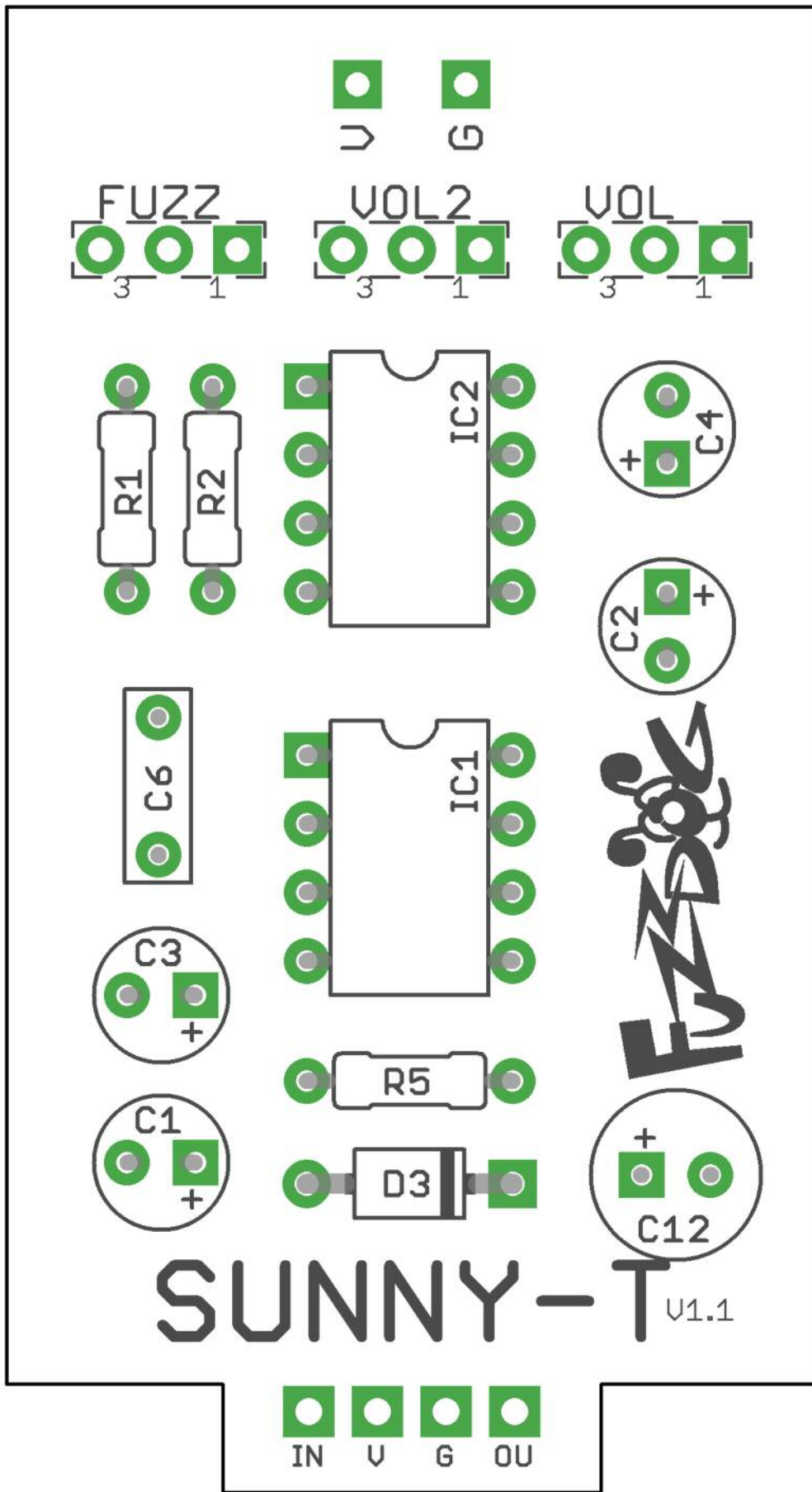
VOL 100KA

You have the option of going for a one-knob, volume only configuration as per the original, or you can add a gain control at the front to tame the beast.

If going for a one-knob, use the central VOL pads and add a jumper as shown.

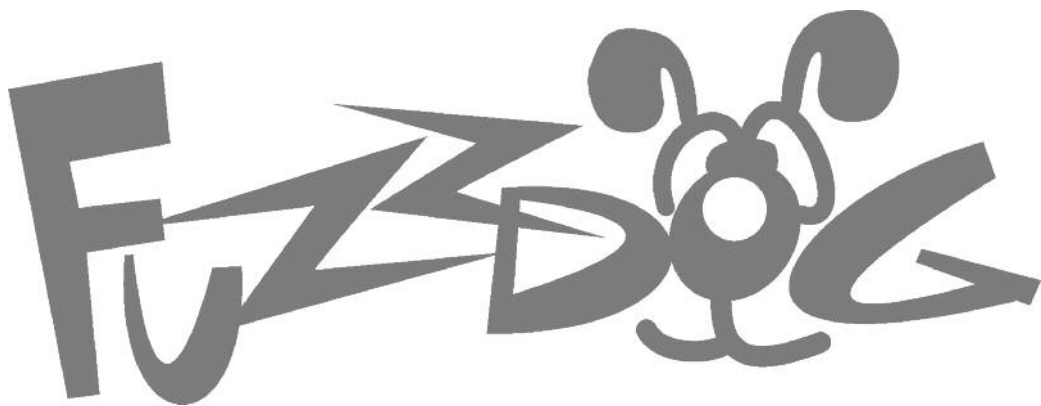






Everything else you need is in the
general build doc you've already read.

Head back to that.



FuzzDog.co.uk