

# Hey Sucker

# High-gain JCM-in-a-box fun



# IMPORTANT

## Before you start...

Grab the general build doc that covers all FuzzPup V2 builds.  
Most of the information you need for this build is in there.

Read it? OK, carry on.

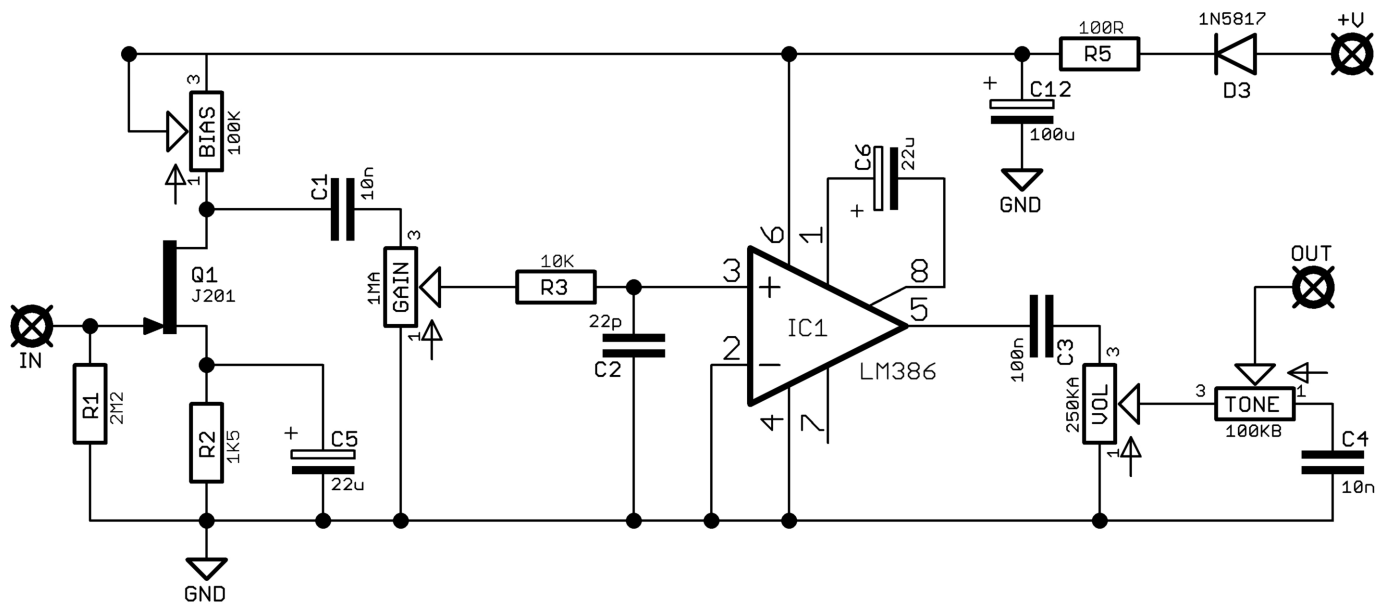


## FuzzPups v2

Lovely little boxes of joy with a  
standardised build pattern

Contents of this document are ©2022 Pedal Parts Ltd.  
No reproduction permitted without the express written  
permission of Pedal Parts Ltd. All rights reserved.

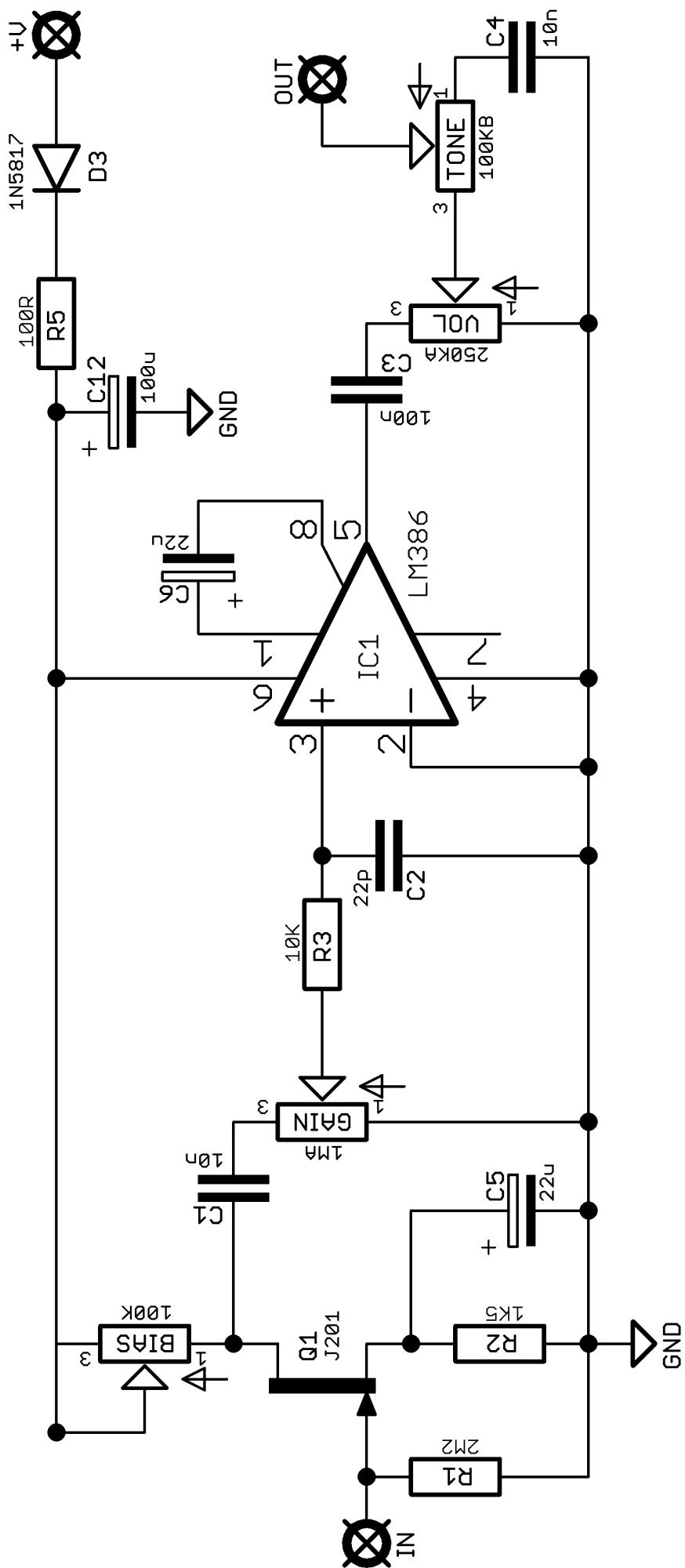
# Schematic + BOM

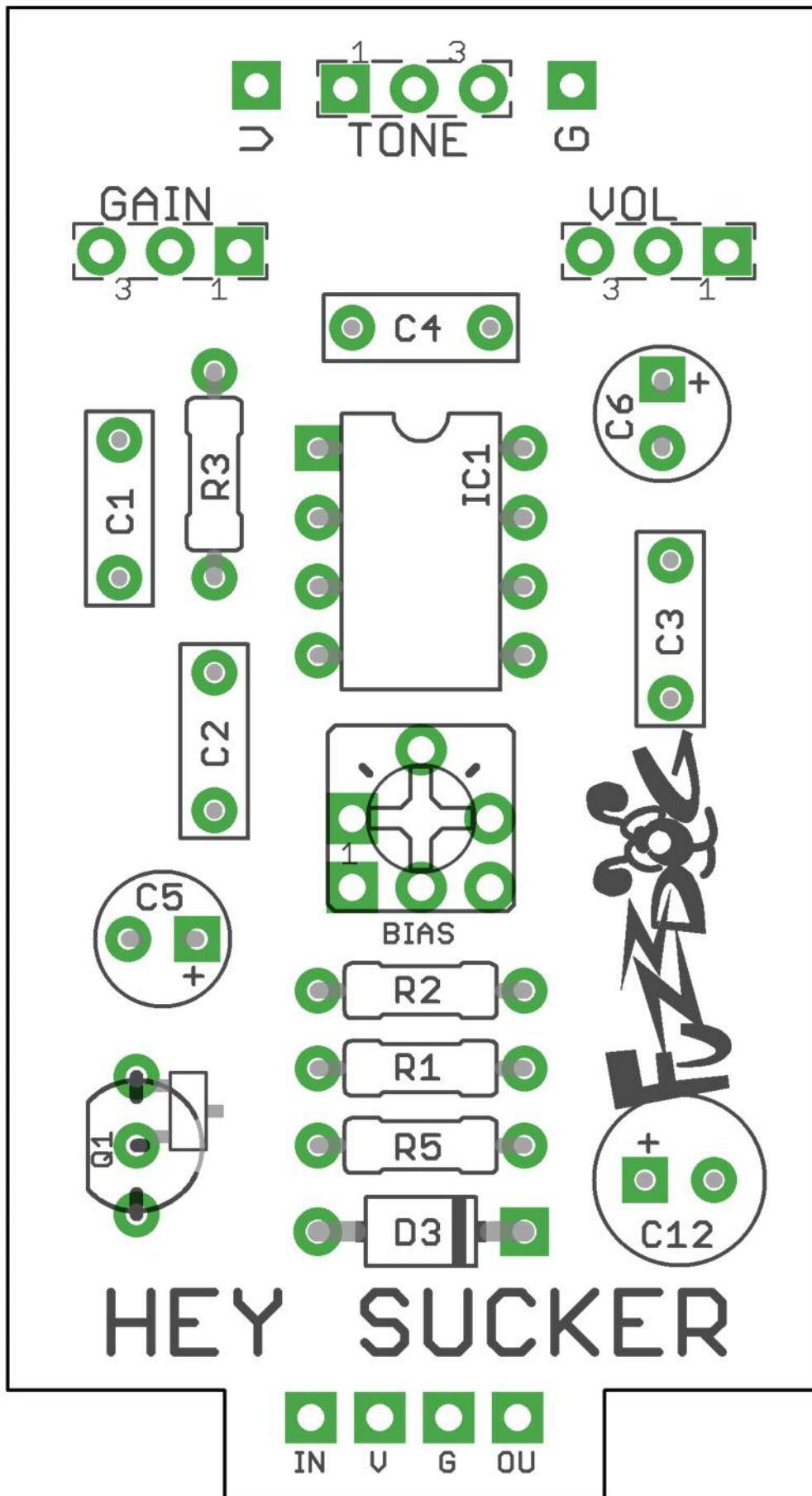


R1 2M2  
R2 1K5  
R3 10K  
R5 100R

C1 10n  
C2 22p  
C3 100n  
C4 10n  
C5 22u elec  
C6 22u elec  
C12 100u elec

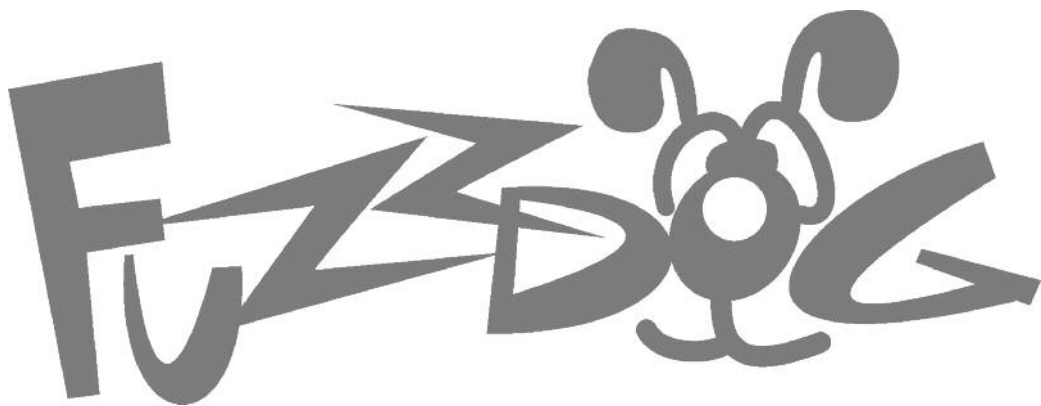
D3 1N5817  
Q1 J201/MMBFJ201  
IC1 LM386-N1  
GAIN 1MA  
VOL 250KA  
TONE 100KB





Everything else you need is in the  
general build doc you've already read.

Head back to that.



**[FuzzDog.co.uk](http://FuzzDog.co.uk)**