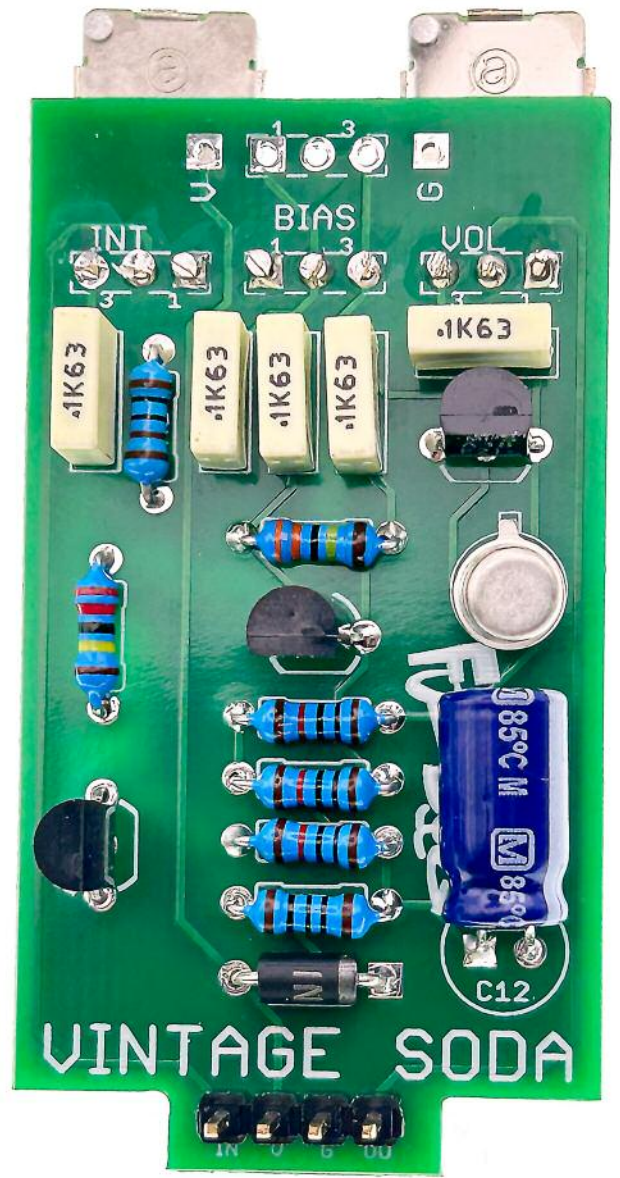


Fuzz Pup



Vintage Soda

Extreme fuzz fun



IMPORTANT

Before you start...

Grab the general build doc that covers all FuzzPup V2 builds.
Most of the information you need for this build is in there.

Read it? OK, carry on.



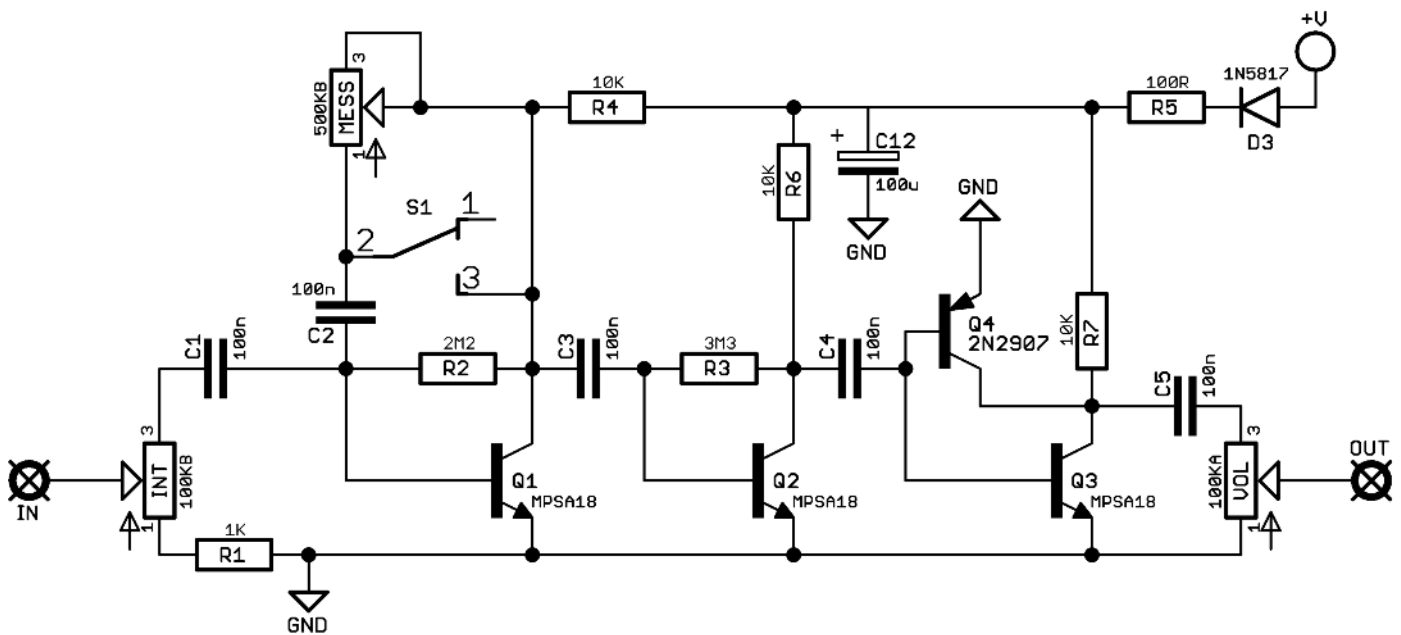
FuzzPups v2

Lovely little boxes of joy with a
standardised build pattern

Contents of this document are ©2022 Pedal Parts Ltd.
No reproduction permitted without the express written
permission of Pedal Parts Ltd. All rights reserved.



Schematic + BOM



R1	1K	C1	100n	D1	1N5817
R2	2M2	C2	100n	Q1-3	MPSA18
R3	3M3	C3	100n	Q4	2N2907*
R4	10K	C4	100n		
R5	100R	C5	100n	INT	100KB
R6	10K	C12	100u elec	VOL	100KA
R7	10K				

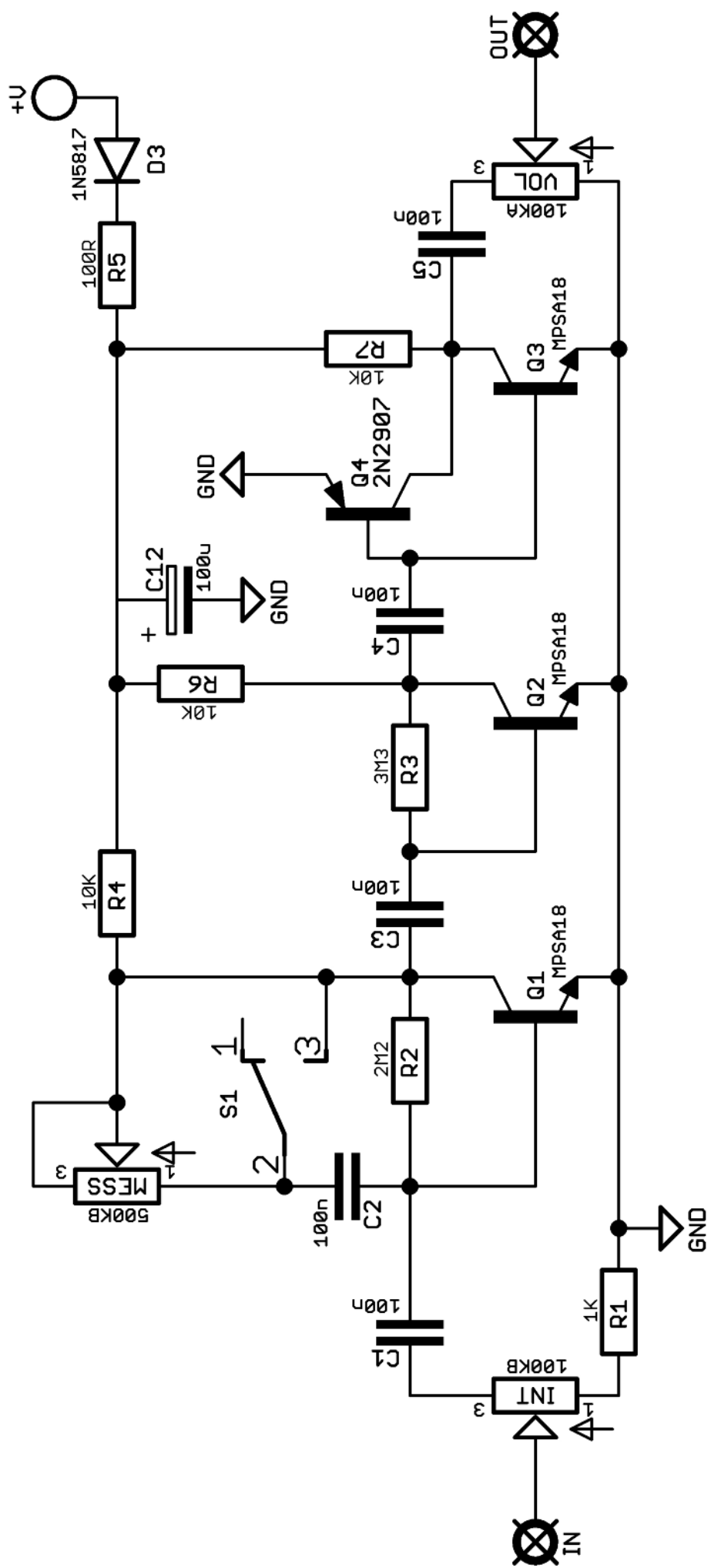
S1 SPDT ON-ON**

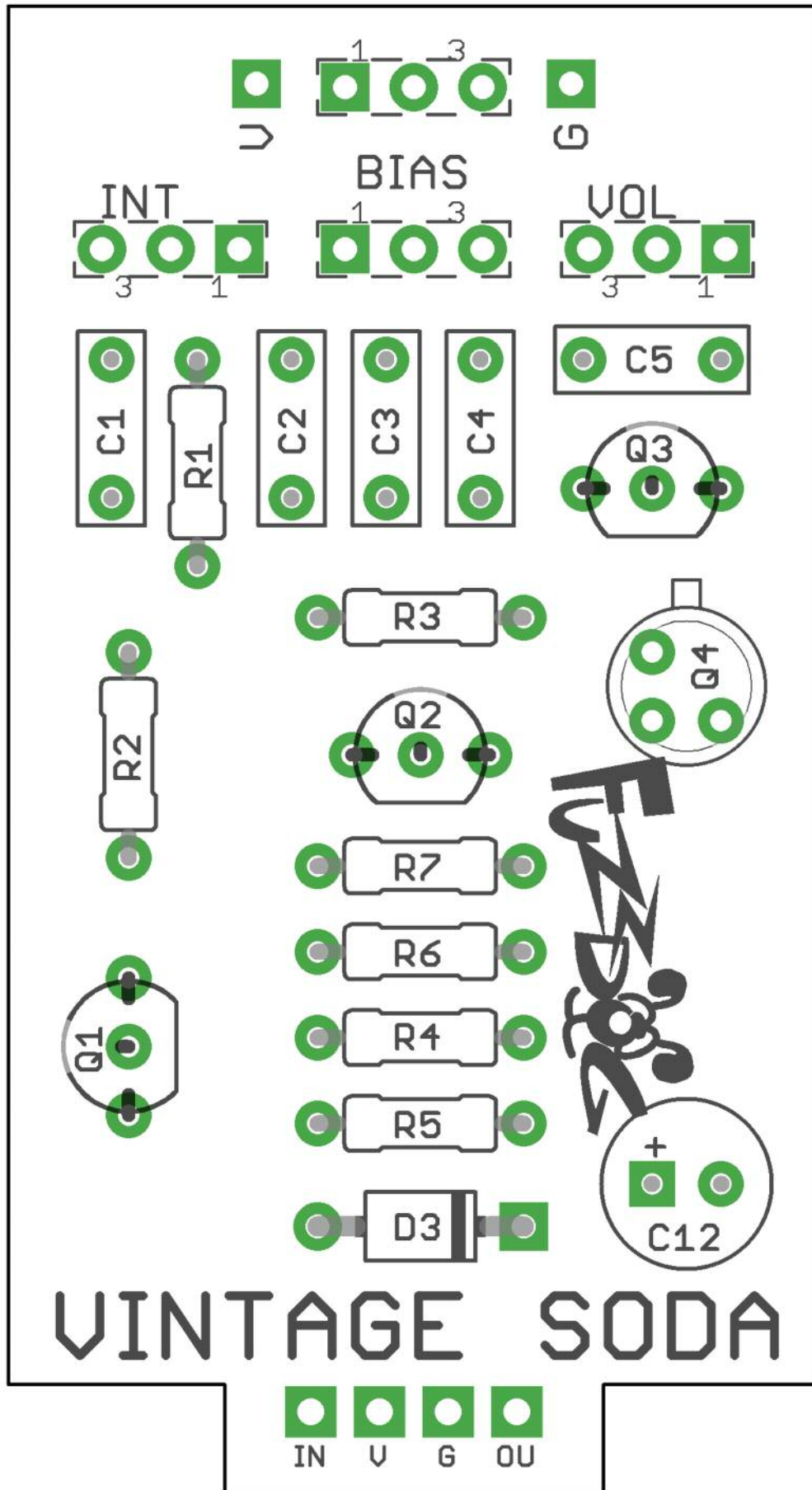
MESS 500KB**

*Reverse this transistor if you want to make the Vintage Soda, which adds an octave-up to the signal.

**There are two ways to mess with your fuzz on this build. Only add one or the other, or neither if you want to keep it almost tameable. Add S1 as a Chaos switch, or a 500KB pot into the pads mistakenly labelled Bias, which does some weird filtering and sounds pretty good if you're into nasty.

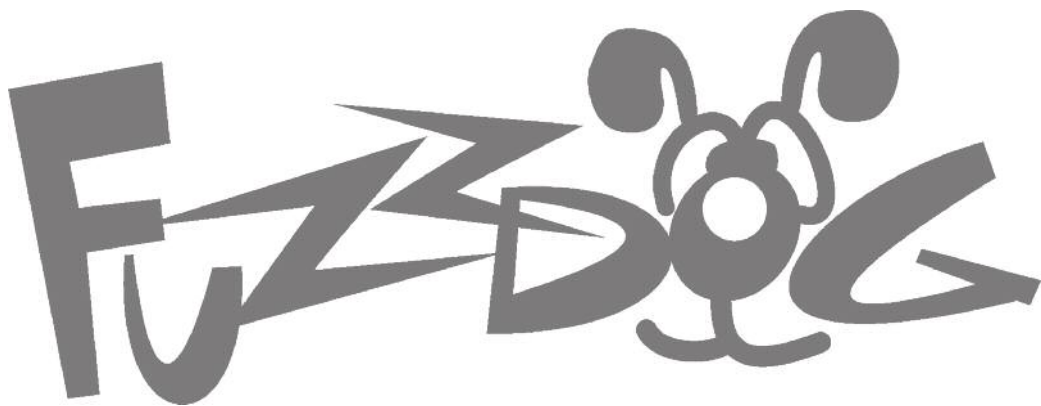
Details of how to add the extra switch or pot using the pot daughterboard are detailed in the general FuzzPup build guide. The upper pads are for the pot, the lower for the toggle switch.





Everything else you need is in the
general build doc you've already read.

Head back to that.



FuzzDog.co.uk