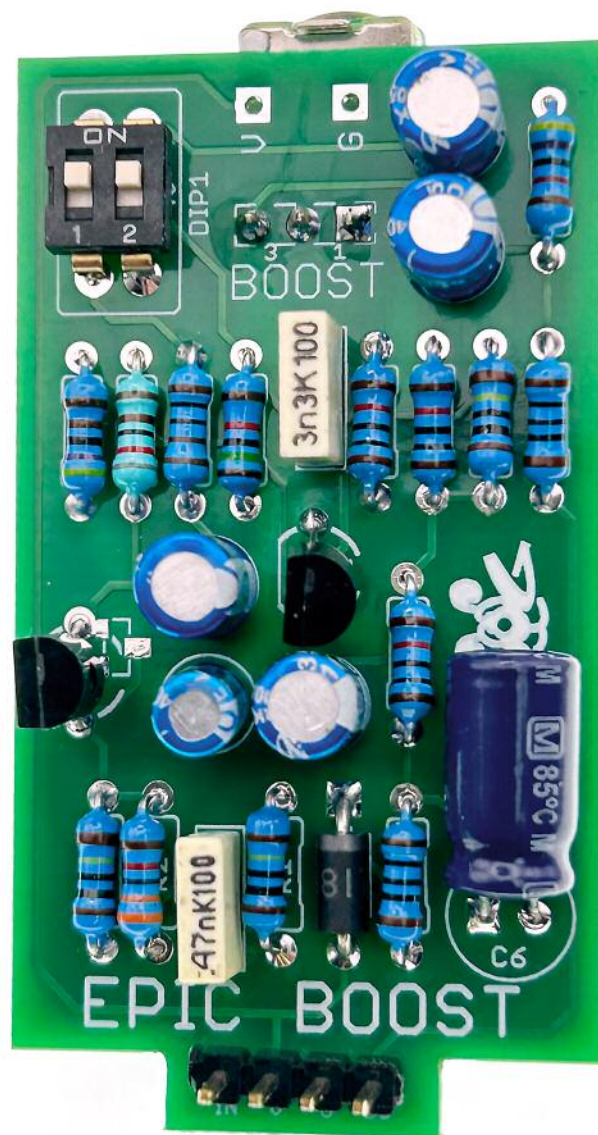
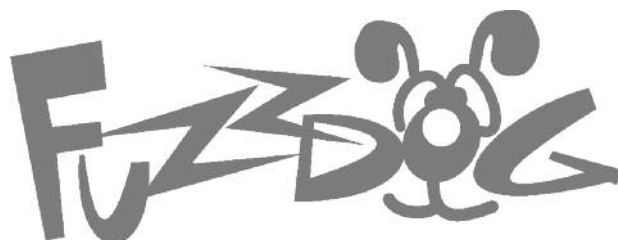


# Fuzz Pup



## Tube Reamer

Run Off Groove's stripped back  
Tube Screamer



# IMPORTANT

## Before you start...

Grab the general build doc that covers all FuzzPup V2 builds.  
Most of the information you need for this build is in there.

Read it? OK, carry on.



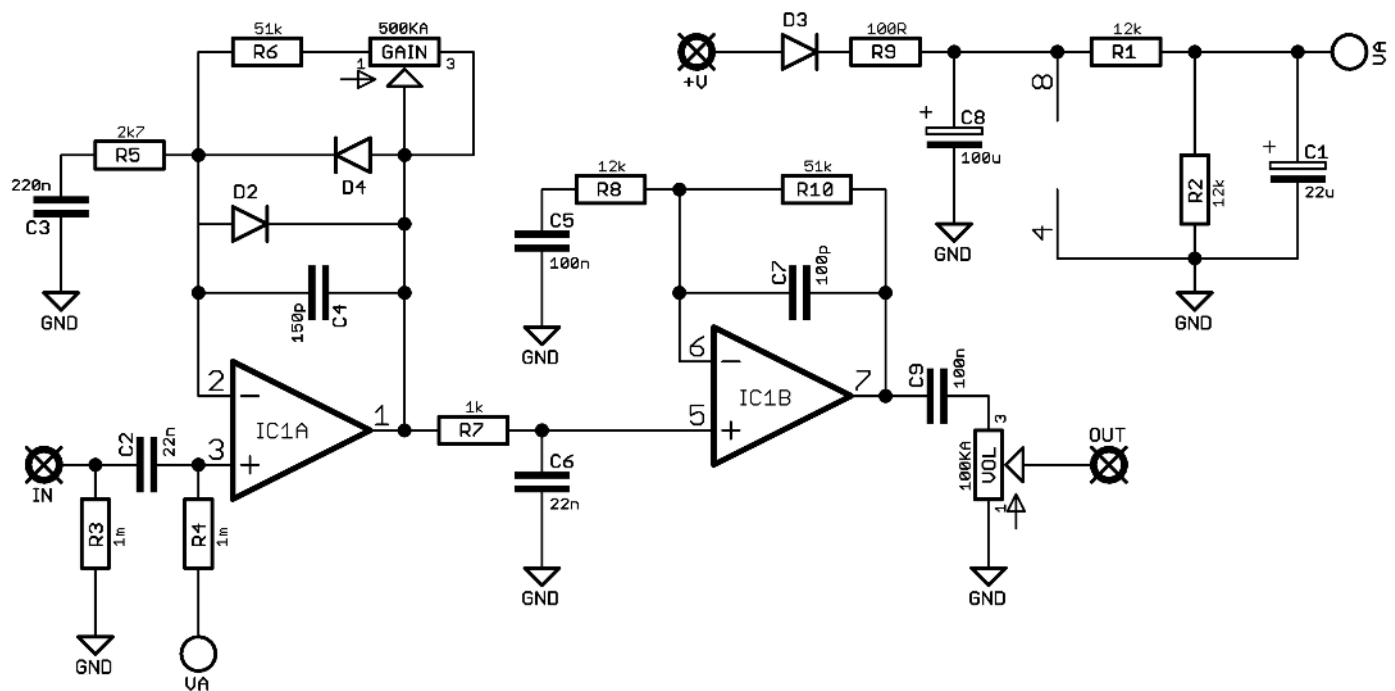
## FuzzPups v2

Lovely little boxes of joy with a  
standardised build pattern

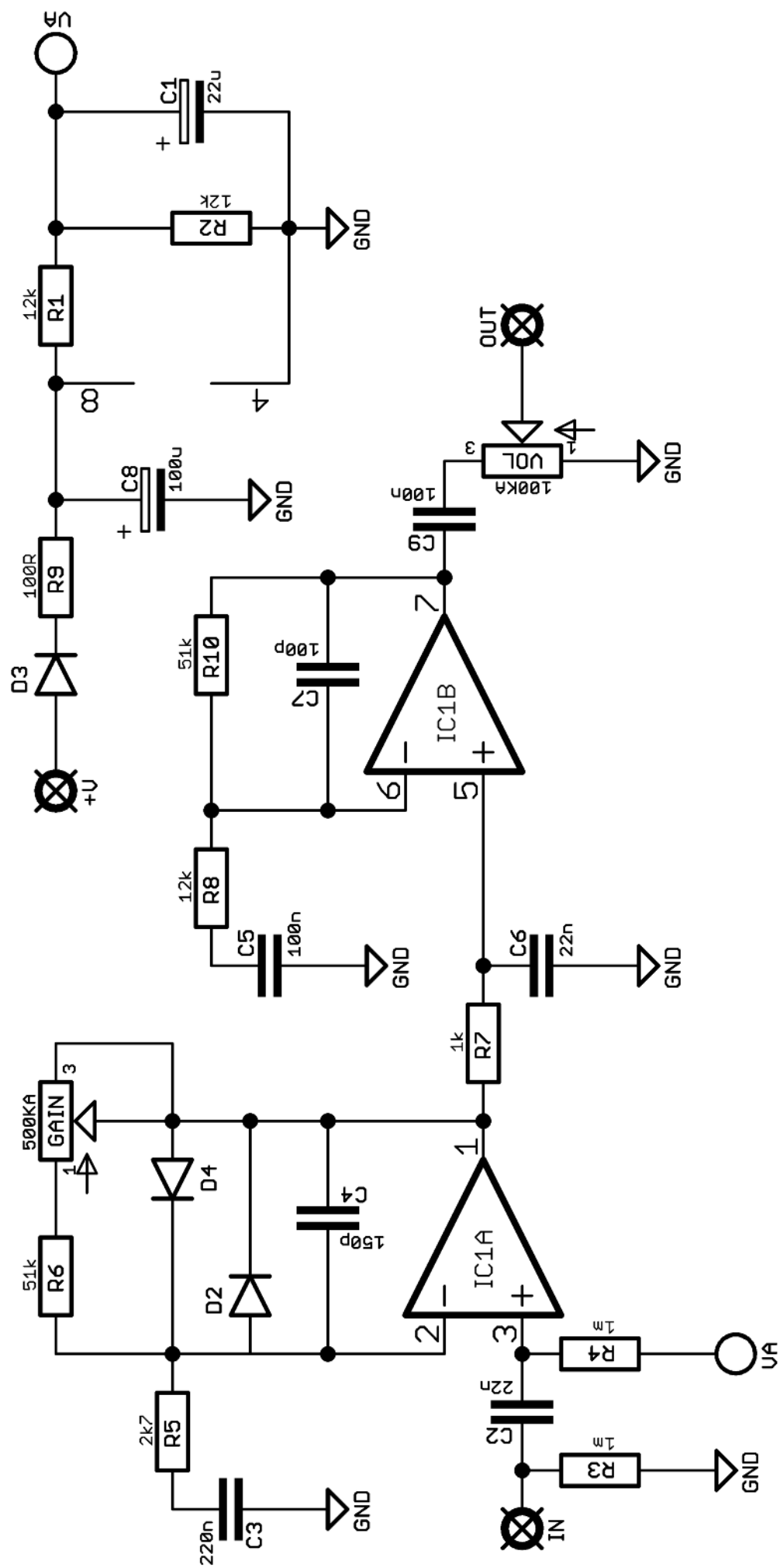


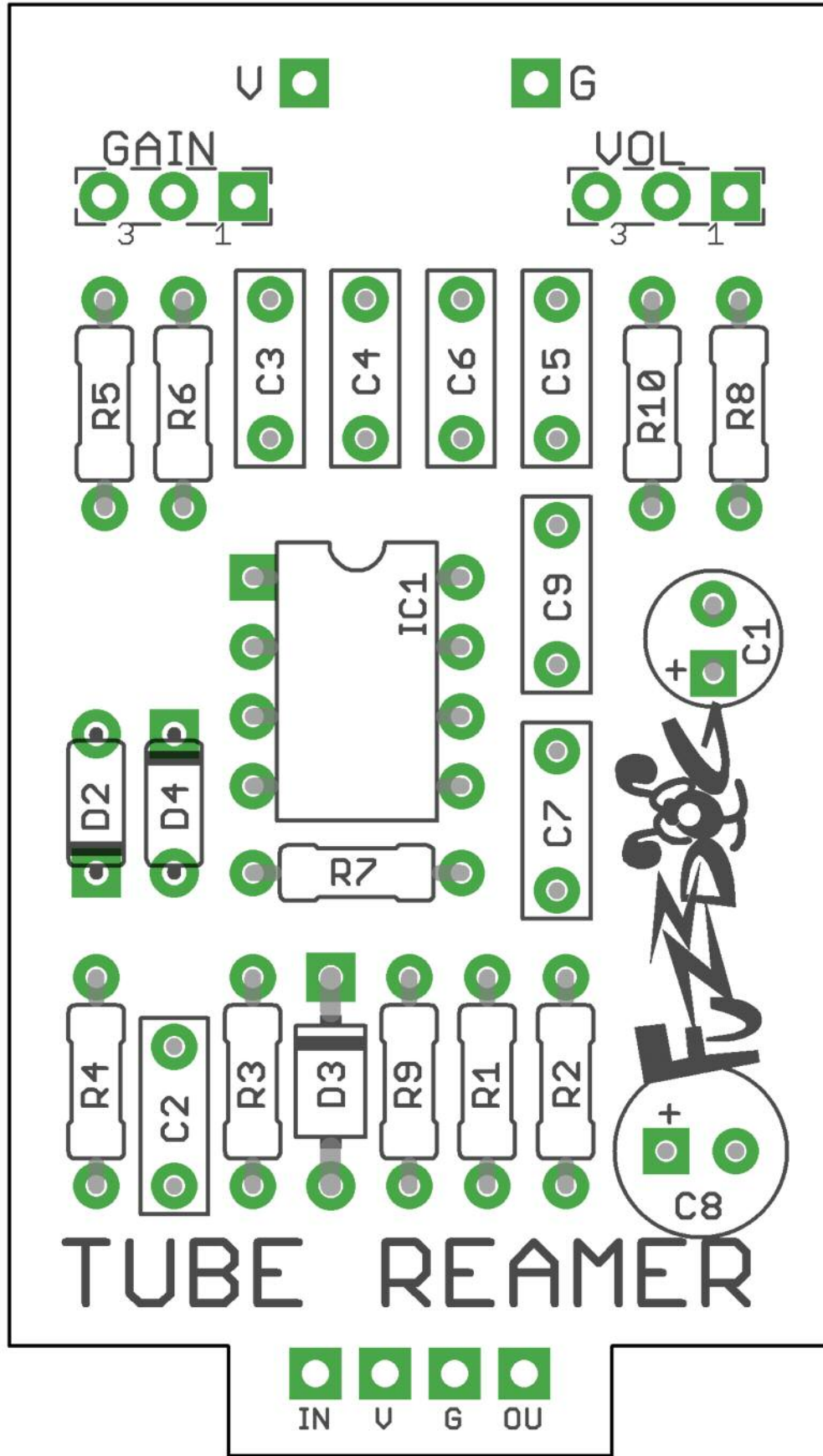
Contents of this document are ©2022 Pedal Parts Ltd.  
No reproduction permitted without the express written  
permission of Pedal Parts Ltd. All rights reserved.

# Schematic + BOM



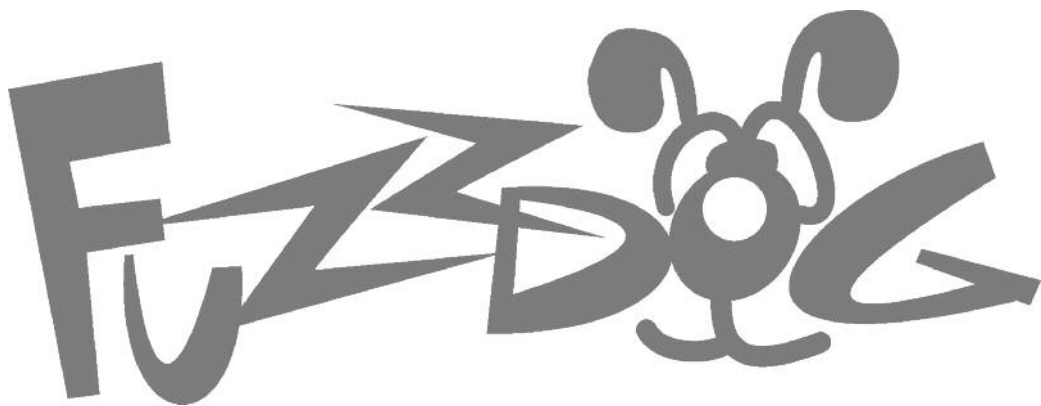
R1	12K	C1	22u elec	D2-3	1N4148
R2	12K	C2	22n	D4	1N5817
R3	1M	C3	220n		
R4	1M	C4	150p	IC1	4558
R5	2K7	C5	100n		
R6	51K	C6	22n	GAIN	500KA
R7	1K	C7	100p	VOL	100KA
R8	12K	C8	100u elec		
R9	100R	C9	100n		
R10	51K				





Everything else you need is in the  
general build doc you've already read.

Head back to that.



**[FuzzDog.co.uk](http://FuzzDog.co.uk)**