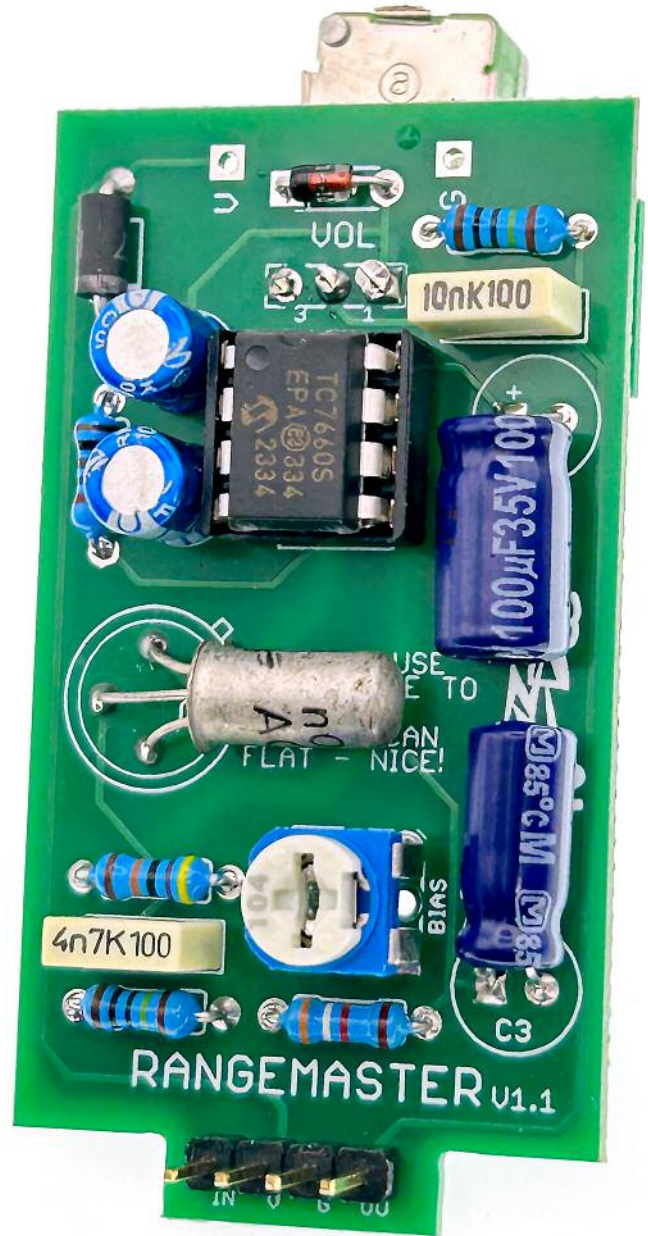


FUZZPUP



Range Master

Classic gritty treble booster



IMPORTANT

Before you start...

Grab the general build doc that covers all FuzzPup V2 builds.
Most of the information you need for this build is in there.

Read it? OK, carry on.



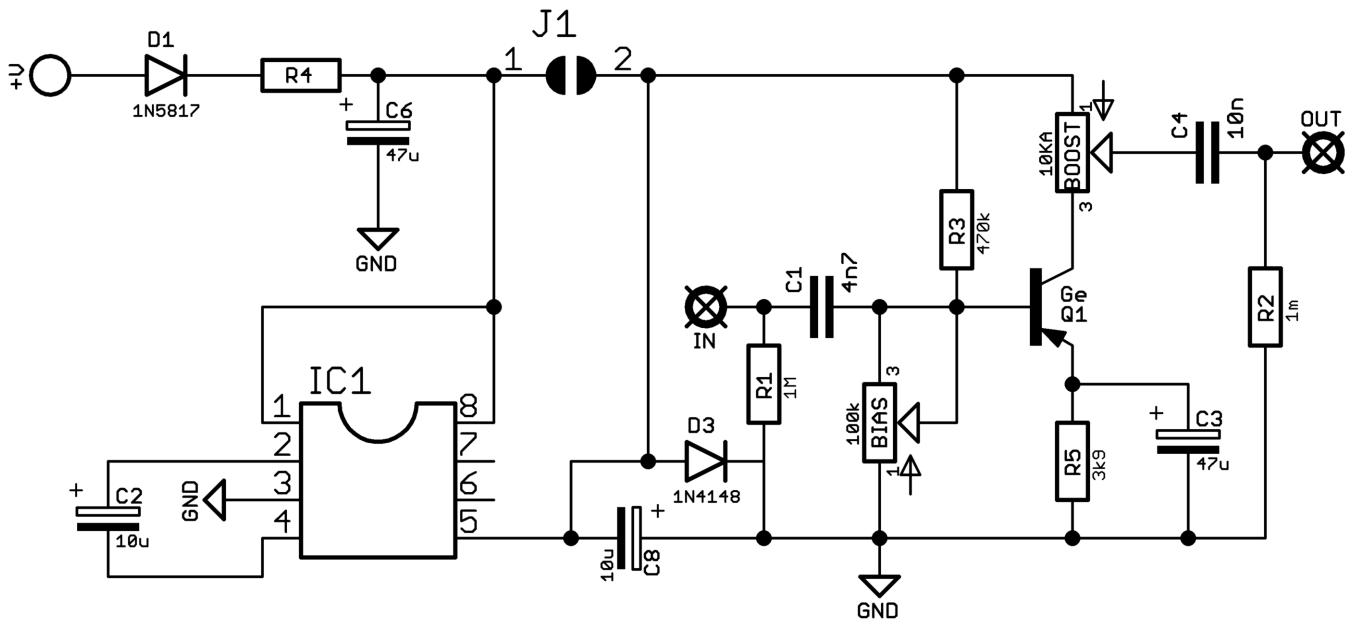
FuzzPups v2

Lovely little boxes of joy with a
standardised build pattern

Contents of this document are ©2022 Pedal Parts Ltd.
No reproduction permitted without the express written
permission of Pedal Parts Ltd. All rights reserved.



Schematic + BOM



R1	1M
R2	1M
R3	470K
R4	100R
R5	3K9

We've included voltage inverter circuitry to enable the use of PNP germanium transistors with a standard negative-ground supply.

If you want to build a pedal using an NPN transistor, leave out the charge pump (all parts labelled in green above) and connect the pads of J1 with a blob of solder.

*Something in the range of 70-100hFE is ideal.

BIASING

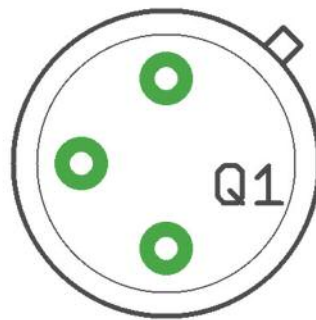
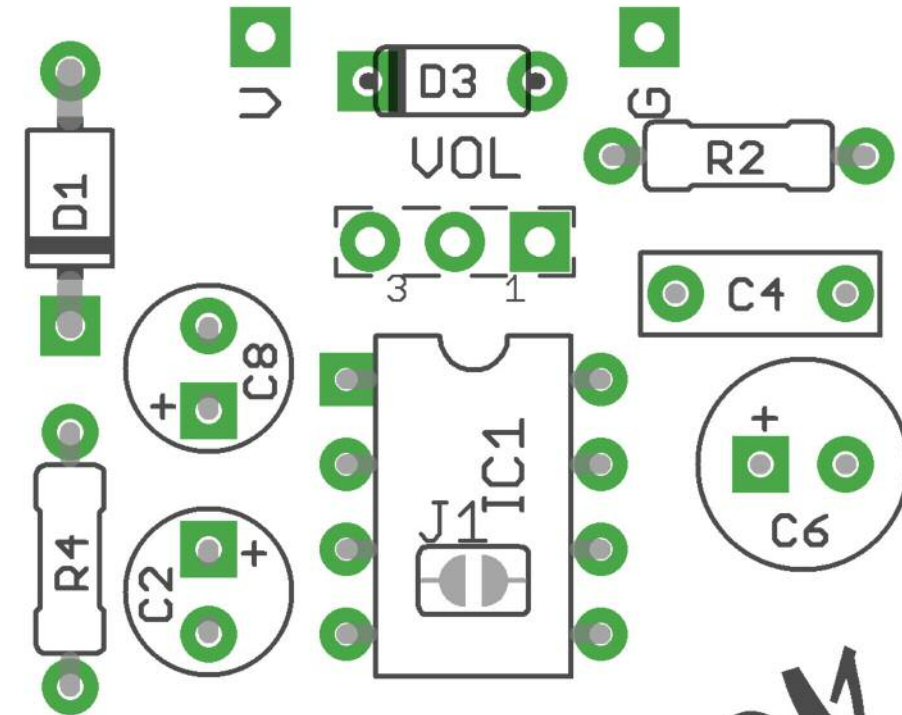
With the boost control fully CW, adjust your trimmer until you get around 7V on the collector of Q1.

D1	1N5817
D3	1N4148

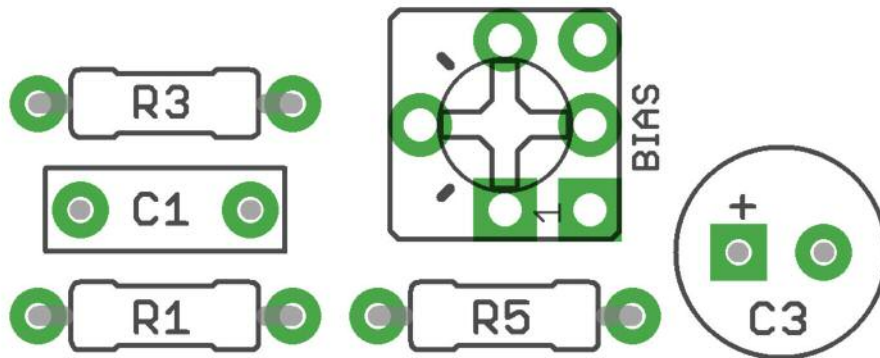
Q1 Ge^*

BOOST 10KA

BIAS 100K trimIC1 7660SEPA



YOU CAN USE
THIS SPACE TO
LAY YOUR
MASSIVE CAN
FLAT - NICE!



RANGEMASTER V1.1



Everything else you need is in the
general build doc you've already read.

Head back to that.



FuzzDog.co.uk