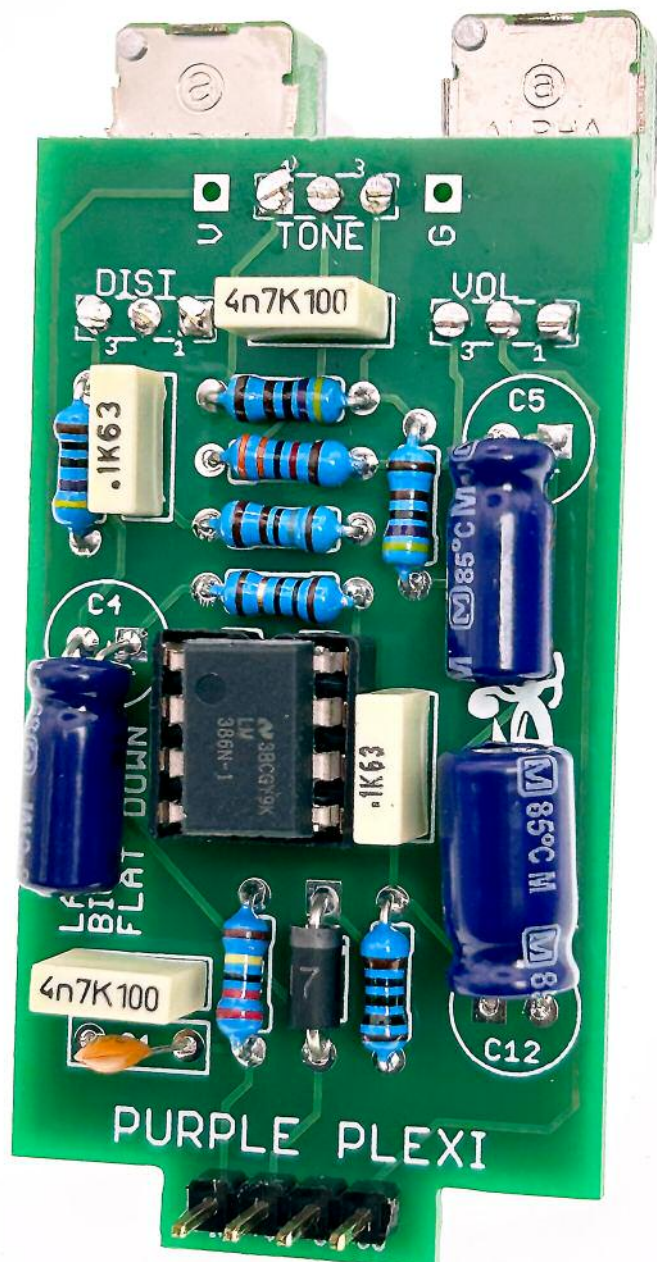
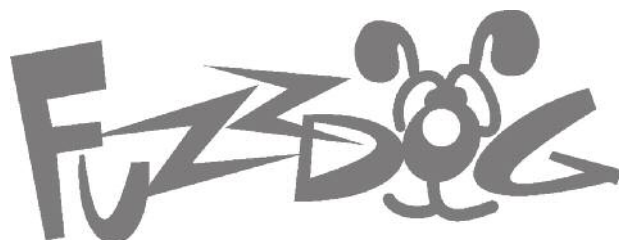


Fuzz Pup



Pink Plexi

Marshall-ish high gain tones



IMPORTANT

Before you start...

Grab the general build doc that covers all FuzzPup V2 builds.
Most of the information you need for this build is in there.

Read it? OK, carry on.



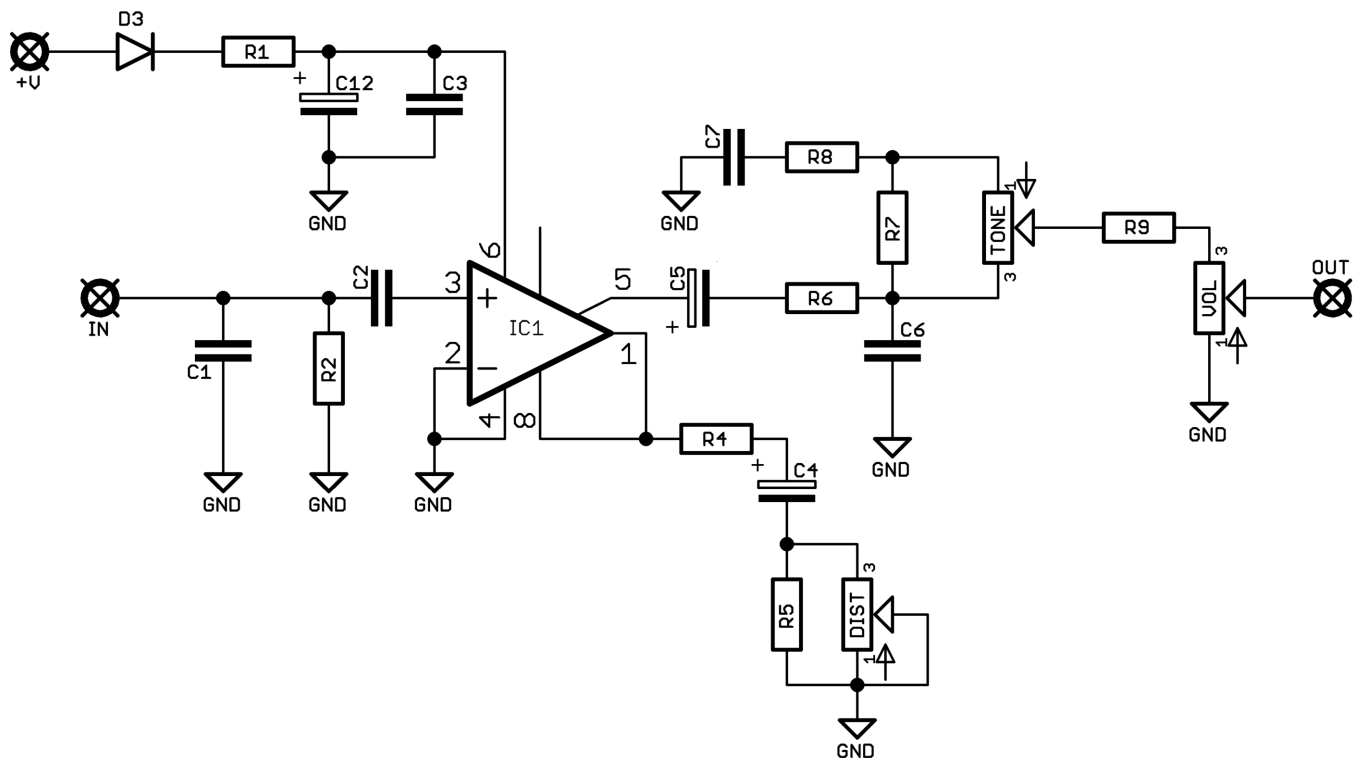
FuzzPups v2

Lovely little boxes of joy with a
standardised build pattern



Contents of this document are ©2022 Pedal Parts Ltd.
No reproduction permitted without the express written
permission of Pedal Parts Ltd. All rights reserved.

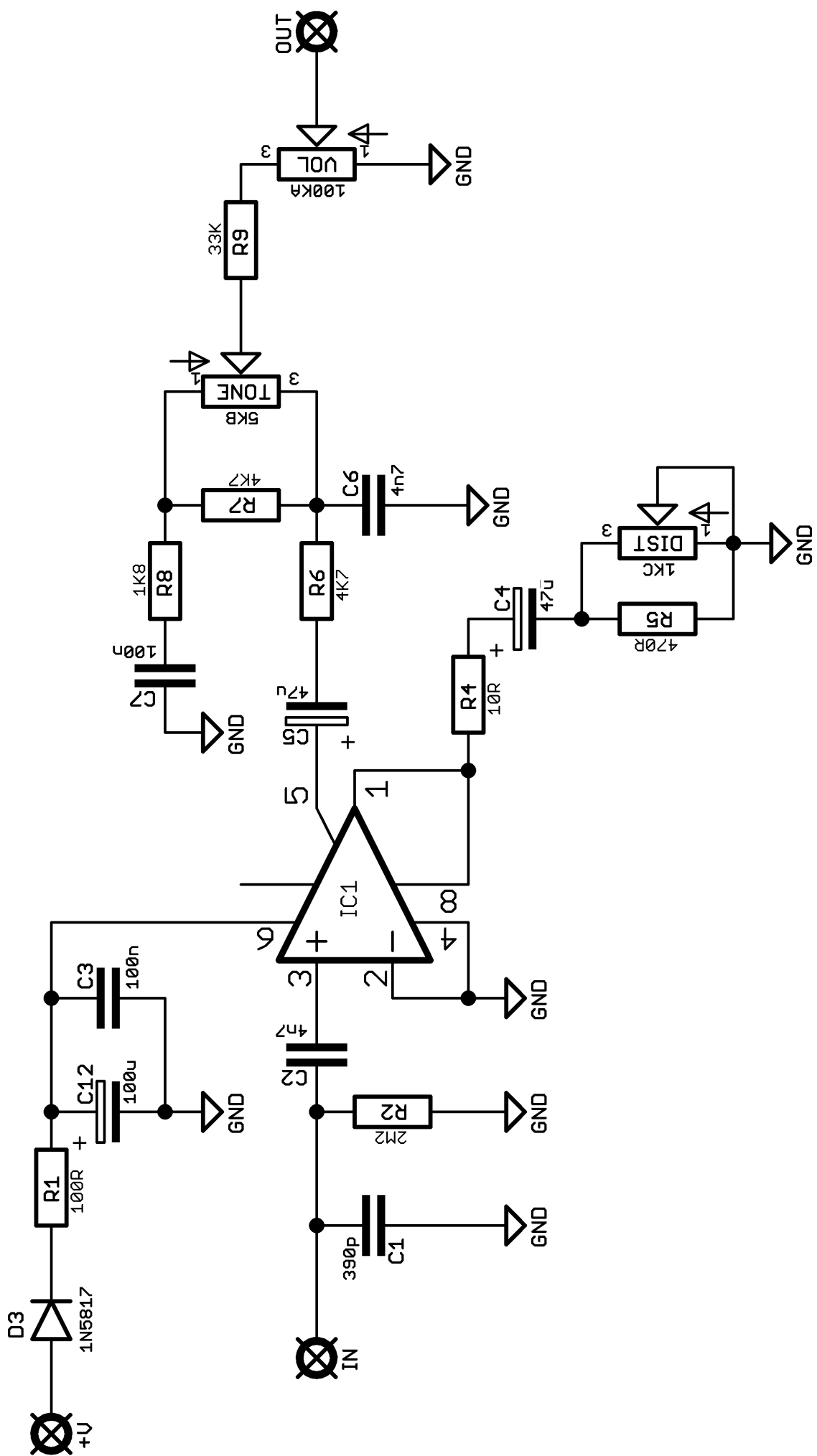
Schematic + BOM

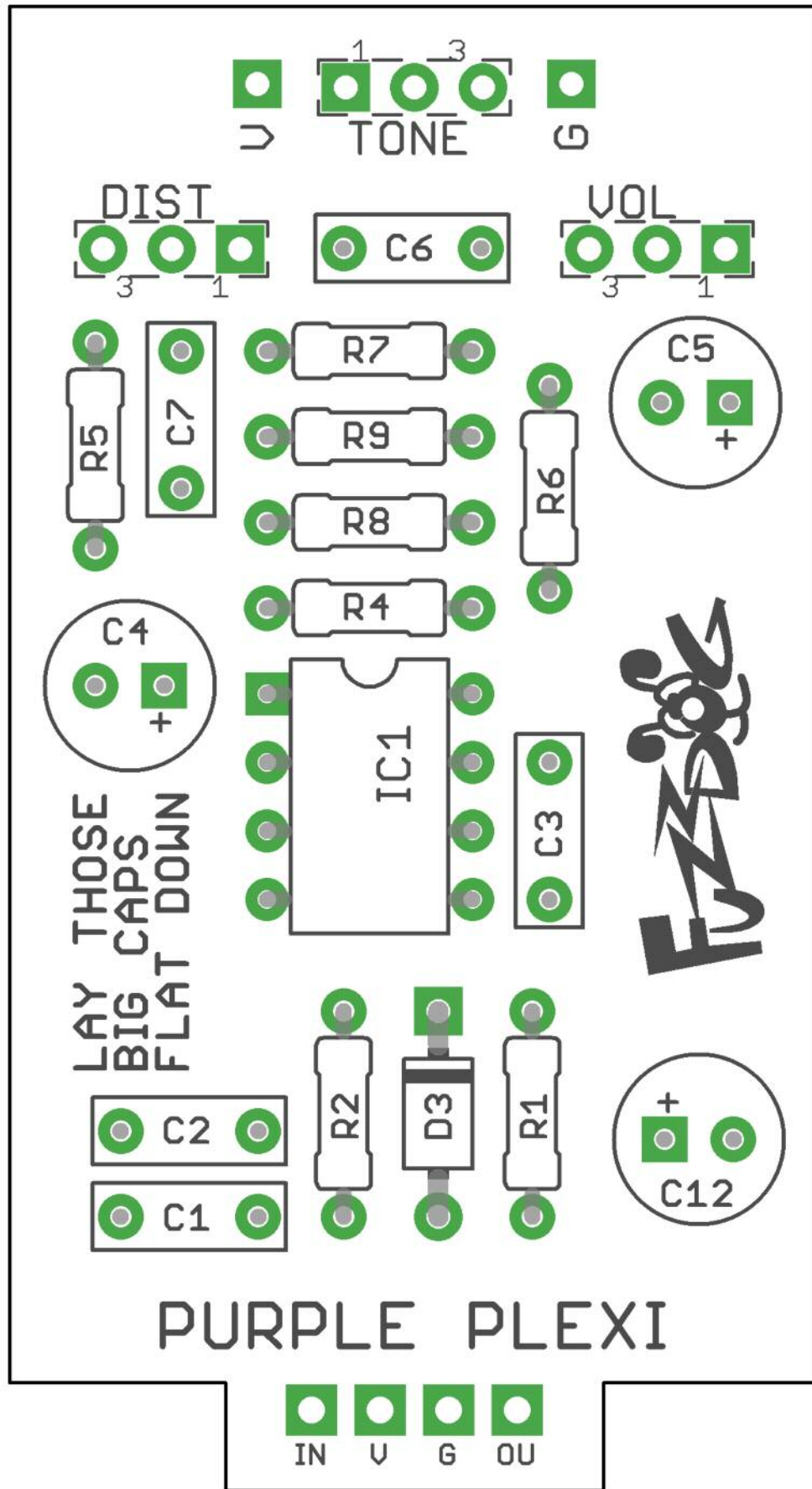


R1	100R	C1	390p	IC1	LM386-N1
R2	2M2	C2	4n7	D1	1N5817
R4	10R	C3	100n	DIST	1KC**
R5	470R	C4	47u elec	TONE	5KB
R6	4K7	C5	47u elec	VOL	100KA
R7	4K7	C6	4n7		
R8	1K8	C7	100n		
R9	33K (330R)*	C8	100u elec		

*330R in the original but we feel the volume has a better sweep with 33K.

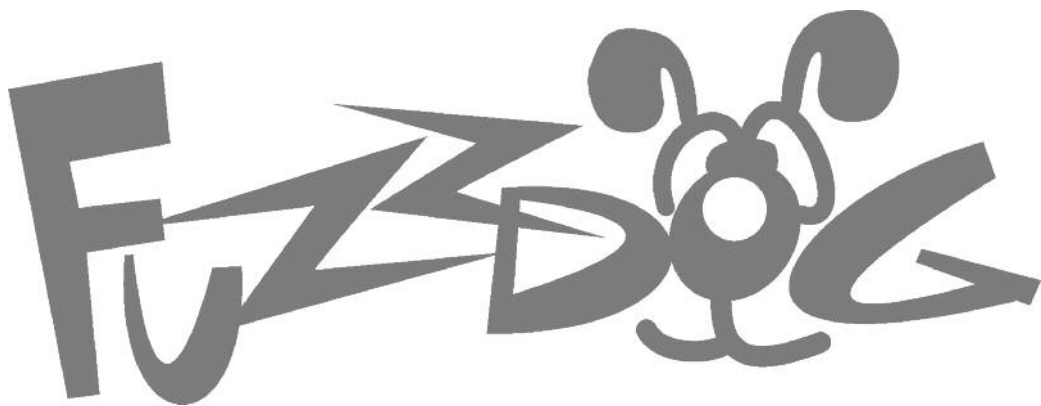
**Linear in original, but you it's pretty much all or nothing without reverse-log.





Everything else you need is in the
general build doc you've already read.

Head back to that.



FuzzDog.co.uk