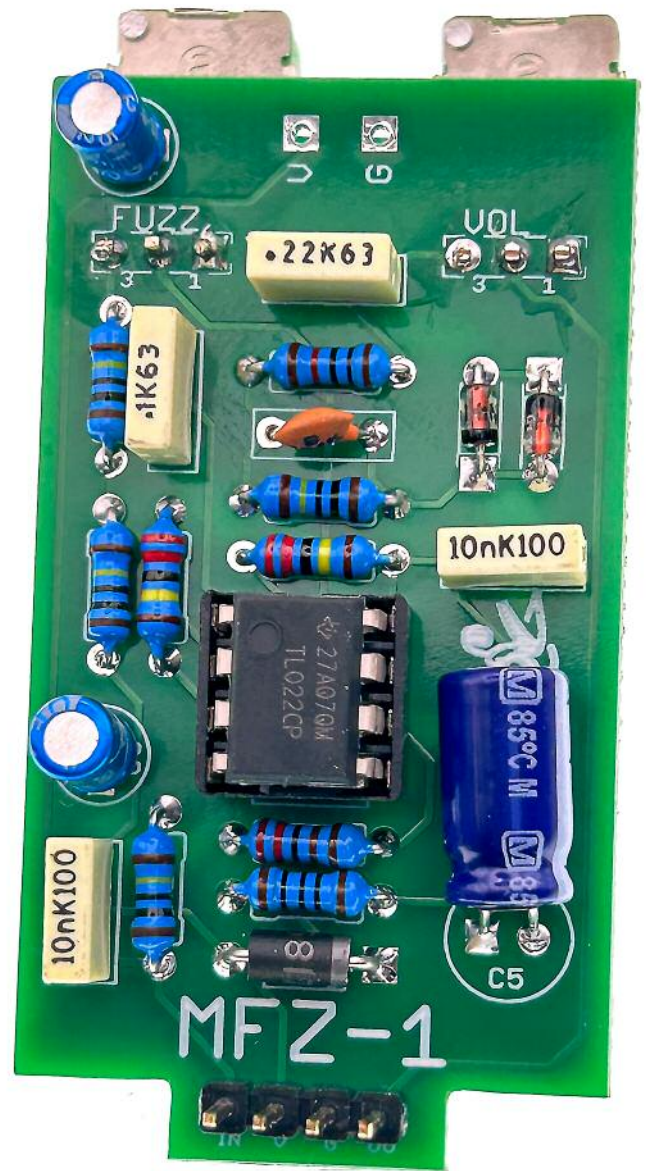


# Fuzz Pup



## MFZ-1

Thick and meaty  
vintage op-amp fuzz



# IMPORTANT

## Before you start...

Grab the general build doc that covers all FuzzPup V2 builds.  
Most of the information you need for this build is in there.

Read it? OK, carry on.



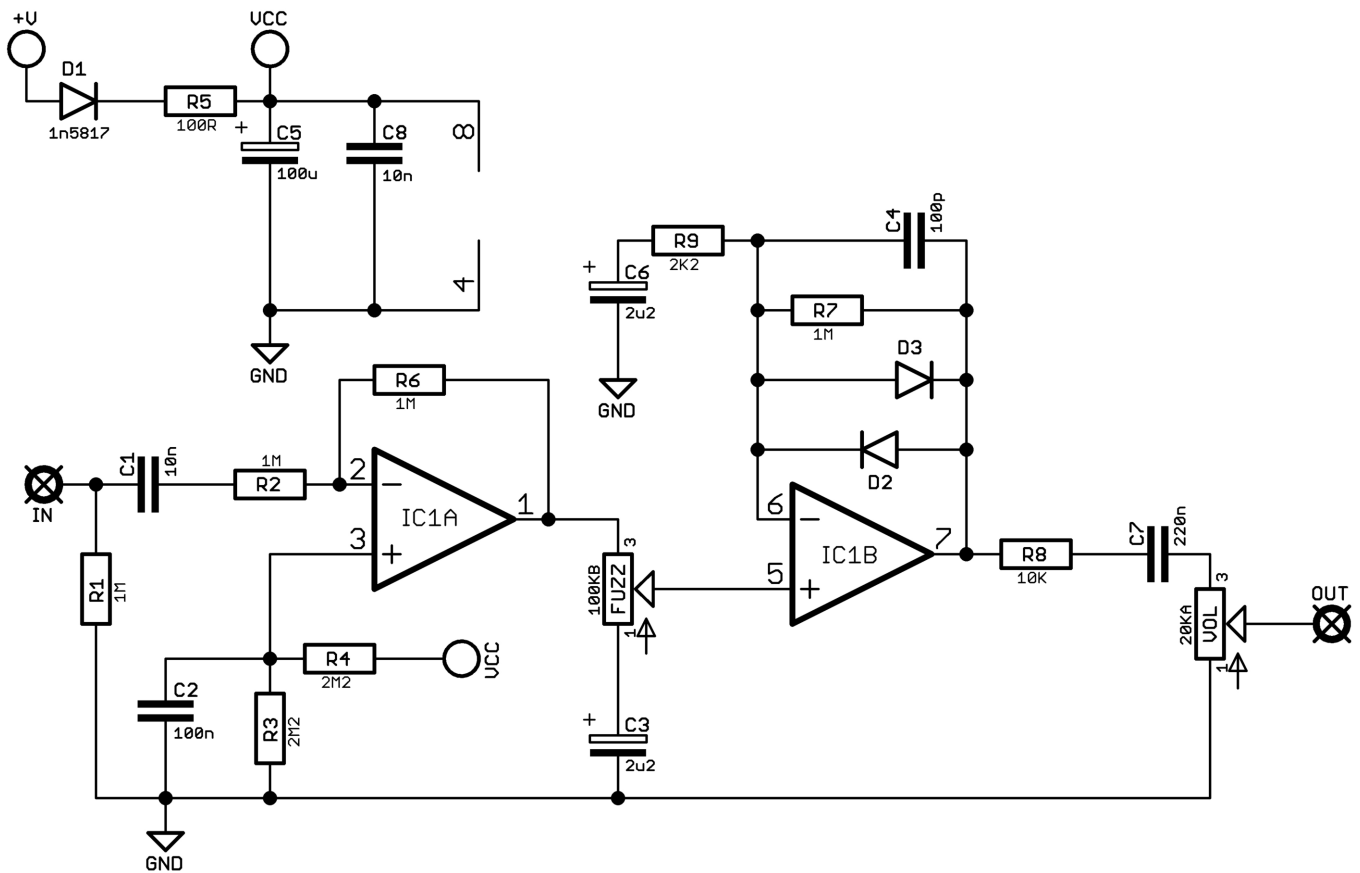
## FuzzPups v2

Lovely little boxes of joy with a  
standardised build pattern

Contents of this document are ©2022 Pedal Parts Ltd.  
No reproduction permitted without the express written  
permission of Pedal Parts Ltd. All rights reserved.

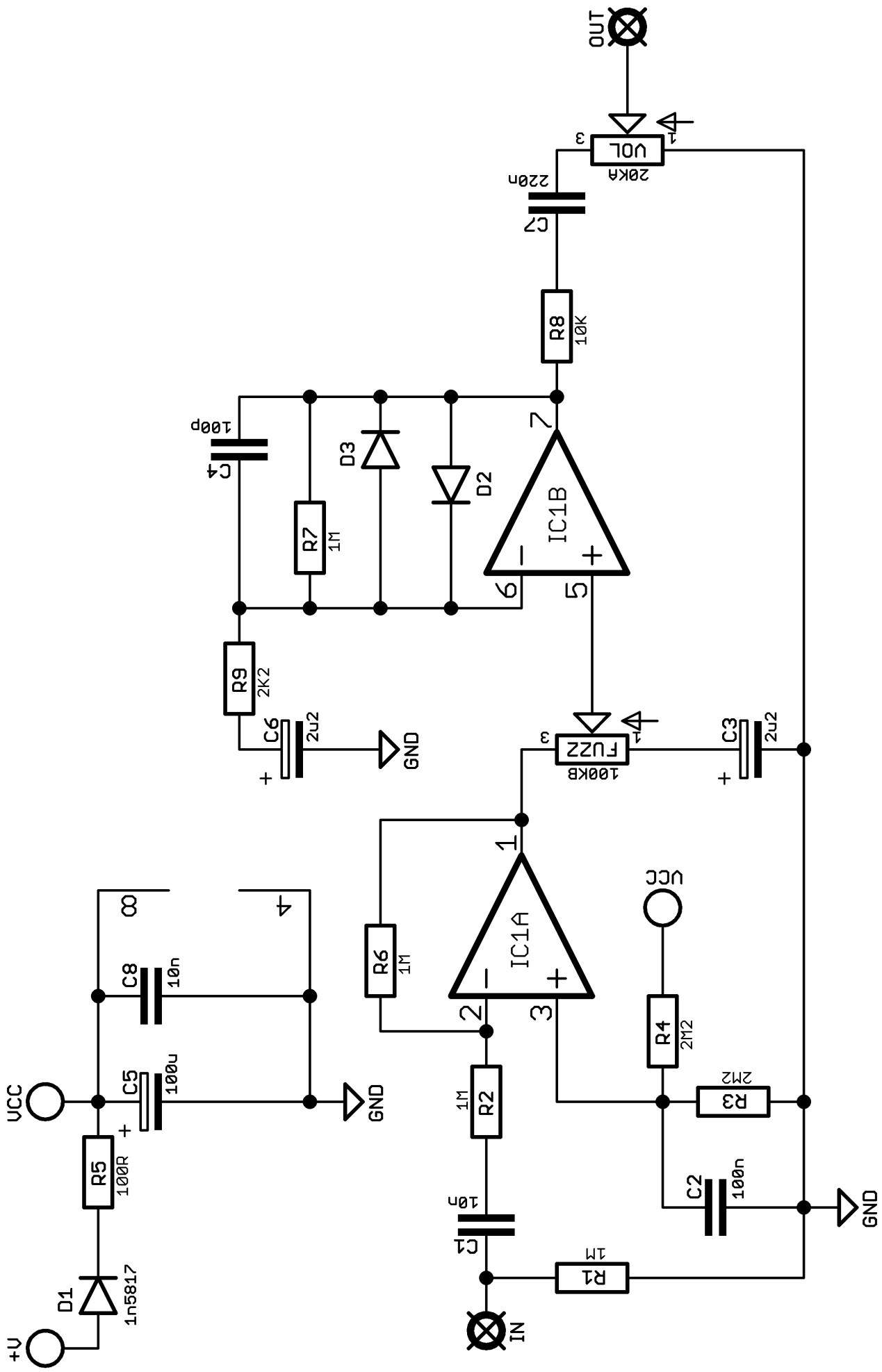


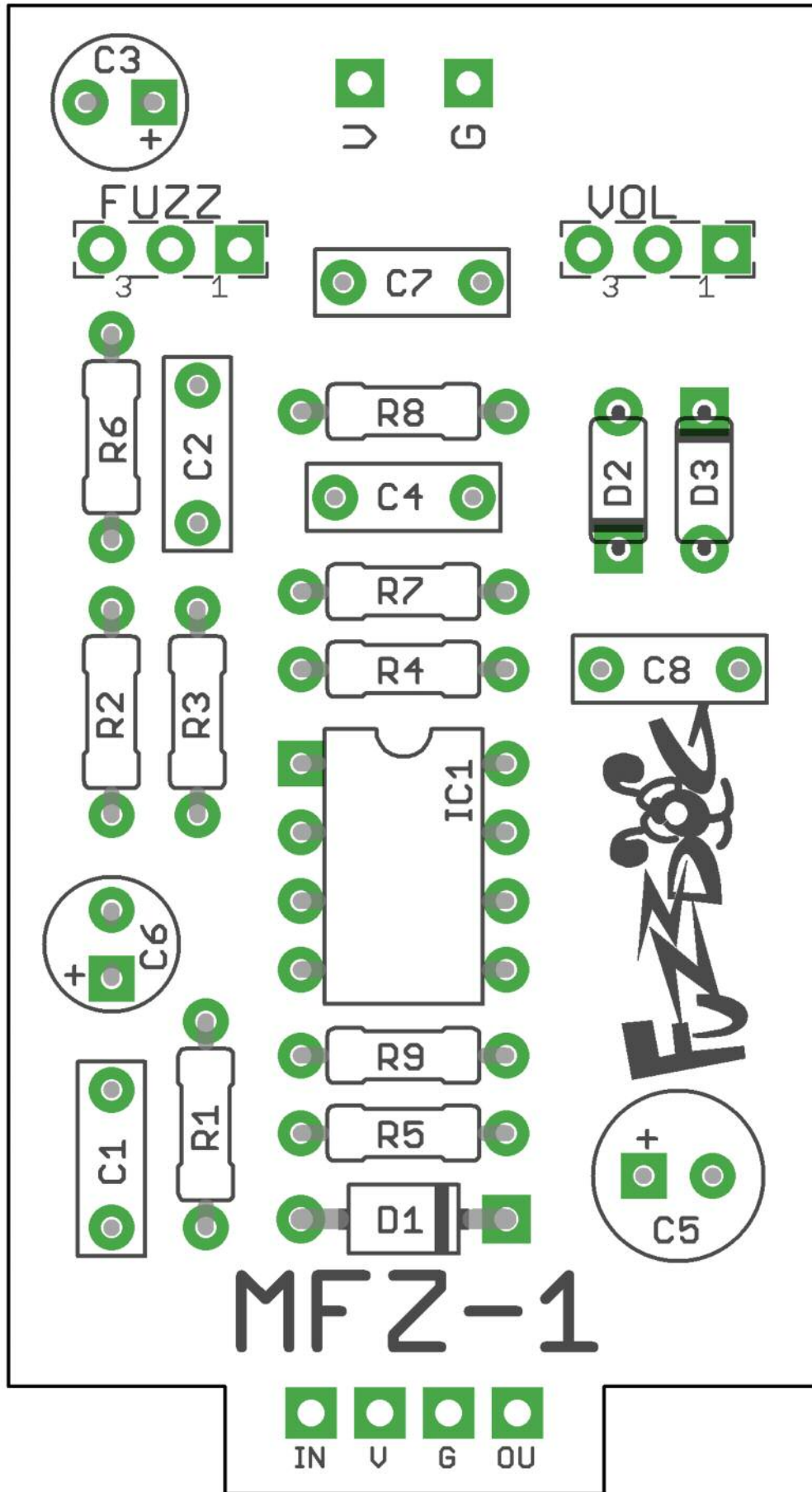
# Schematic + BOM



R1	1M	C1	10n	D1	1N5817
R2	1M	C2	100n	D2-3	1N4148
R3	2M2	C3	2u2 elec	IC1	TL022
R4	2M2	C4	100p	FUZZ	100KB
R5	100R	C5	100u elec	VOL	20KA*
R6	1M	C6	2u2 elec		
R7	1M	C7	220n		
R8	10K	C8	10n		
R9	2M2				

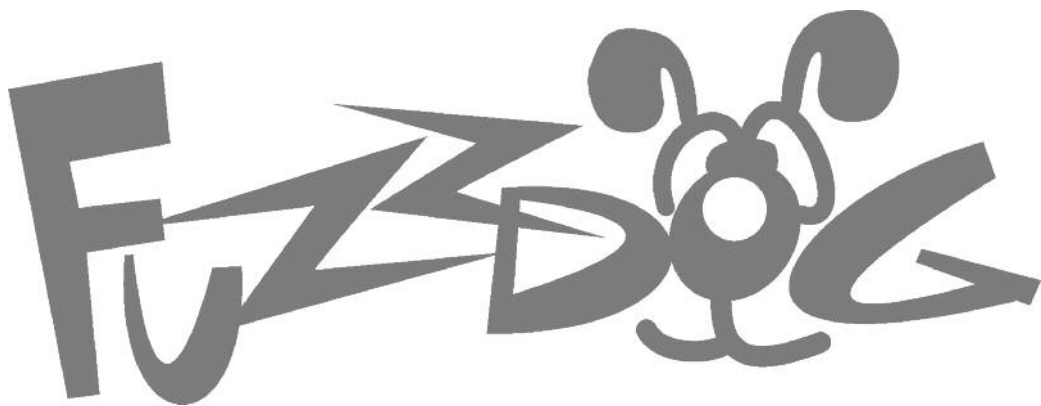
\*Almost impossible to source. Works fine with 50KA.





Everything else you need is in the  
general build doc you've already read.

Head back to that.



**[FuzzDog.co.uk](http://FuzzDog.co.uk)**