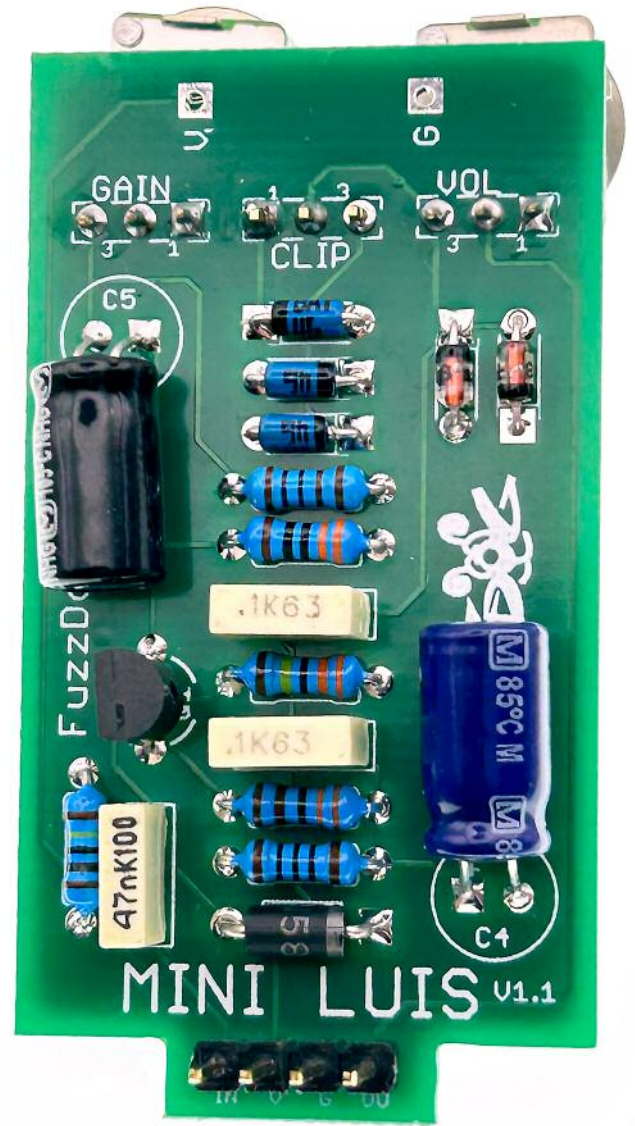


Fuzz Pup



L'il Luis

All sorts of Tweedy action



IMPORTANT

Before you start...

Grab the general build doc that covers all FuzzPup V2 builds.
Most of the information you need for this build is in there.

Read it? OK, carry on.



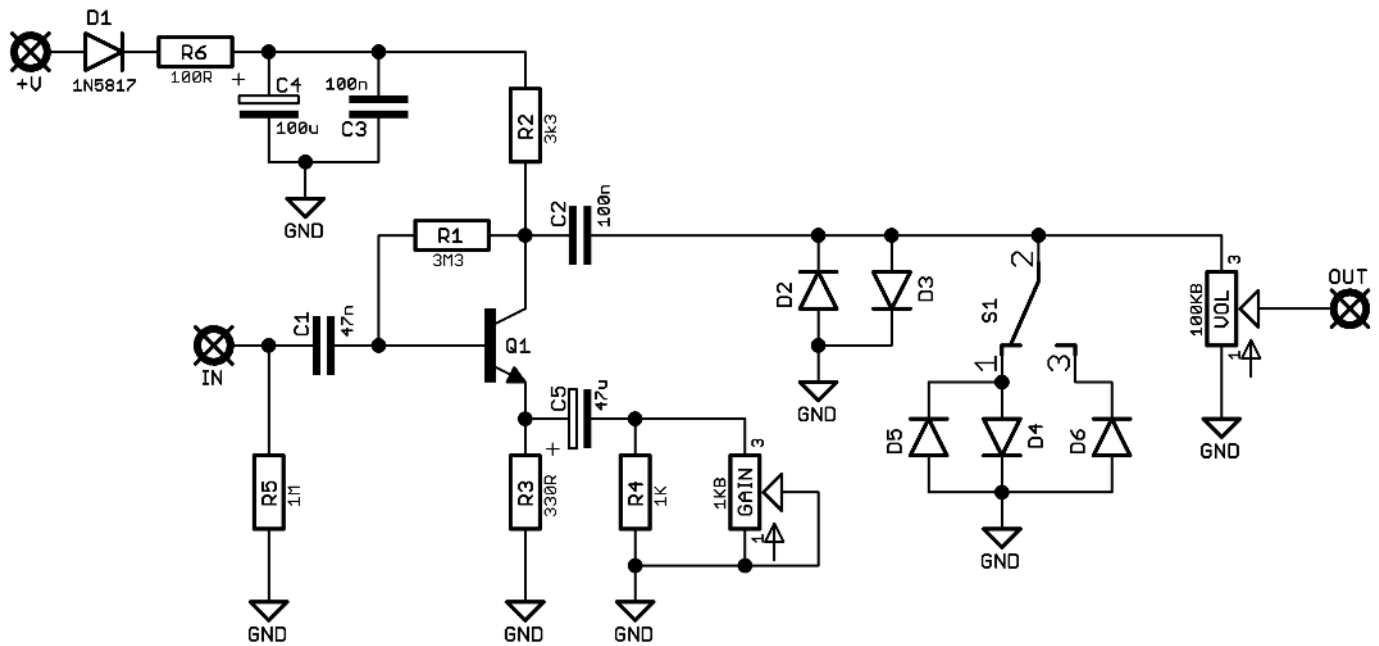
FuzzPups v2

Lovely little boxes of joy with a
standardised build pattern

Contents of this document are ©2022 Pedal Parts Ltd.
No reproduction permitted without the express written
permission of Pedal Parts Ltd. All rights reserved.



Schematic + BOM



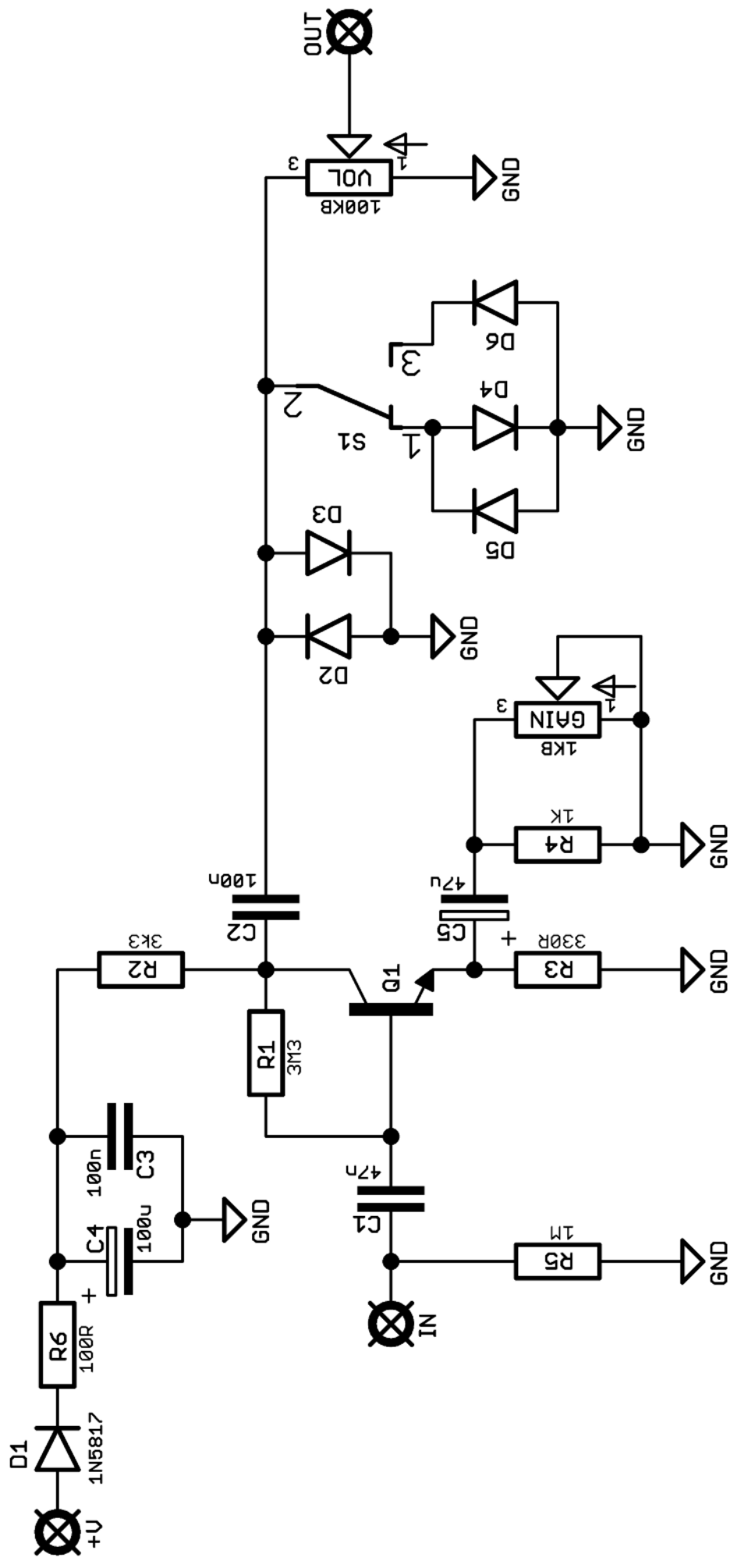
R1 3M3
R2 3K3
R3 330R
R4 1K
R5 1M
R6 100R

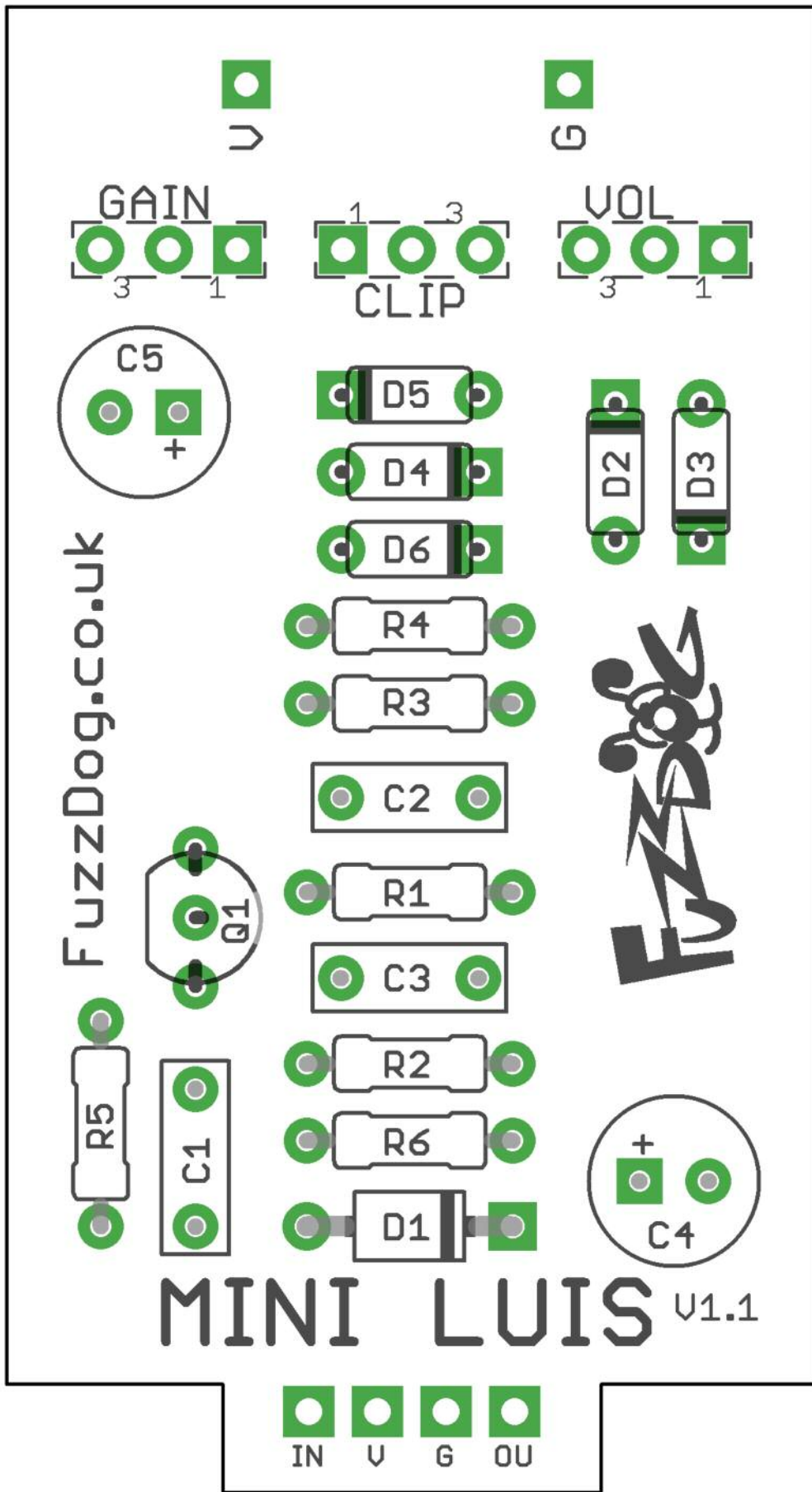
C1 47n
C2 100n
C3 100n
C4 100u elec
C5 47u elec

D1 1N5817
D2-3 1N4148
D4-6 BAT46
Q1 2N5088

GAIN 1KB
VOL 100KB

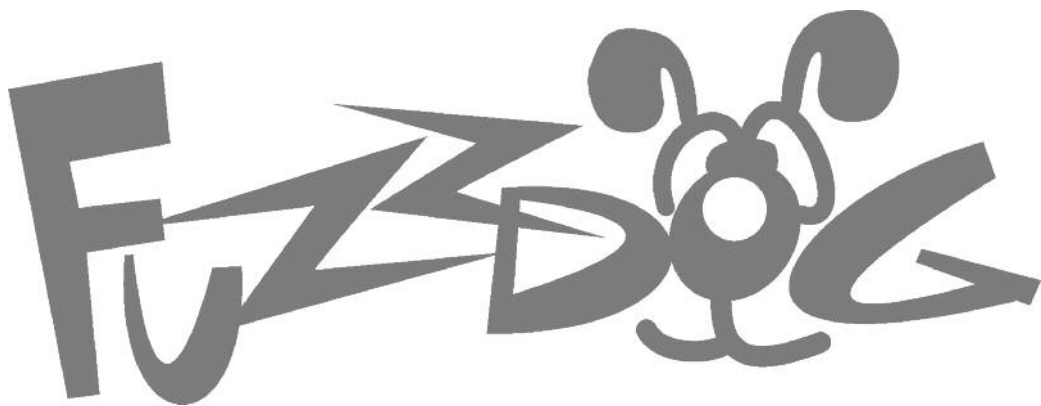
CLIP SPDT ON-OFF-ON





Everything else you need is in the
general build doc you've already read.

Head back to that.



FuzzDog.co.uk