

FUZZPUP



Harmonic Percolator

Classic box of curiosity



IMPORTANT

Before you start...

Grab the general build doc that covers all FuzzPup V2 builds.
Most of the information you need for this build is in there.

Read it? OK, carry on.



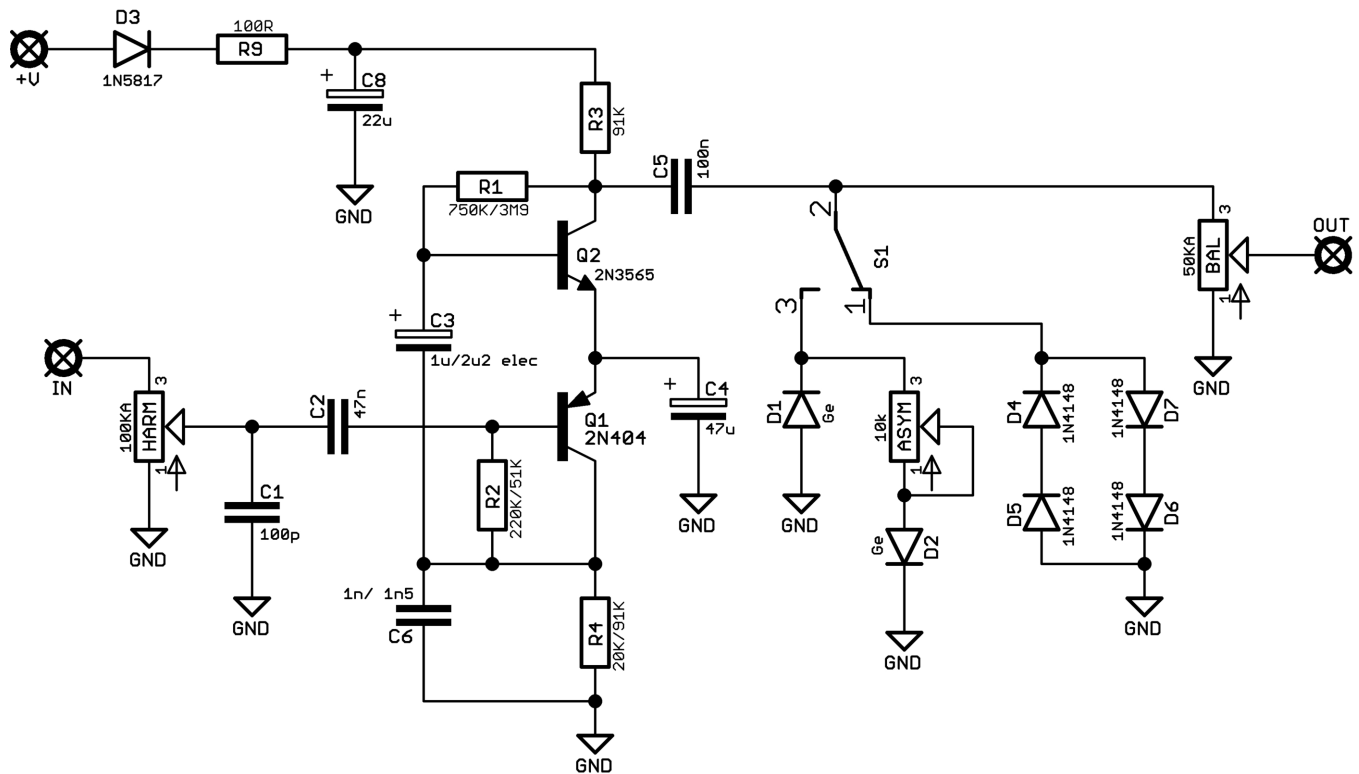
FuzzPups v2

Lovely little boxes of joy with a
standardised build pattern

Contents of this document are ©2022 Pedal Parts Ltd.
No reproduction permitted without the express written
permission of Pedal Parts Ltd. All rights reserved.



Schematic + BOM



R1 750K (3M9)

R2 220K (51K)

R3 91K

R4 20K (91K)

R9 100R

C1 100p

C2 47n

C3 1u elec (2u2)

C4 47u

C5 100n

C6 1n (1n5)

C8 22u ele

Q1 PNP Ge*

Q2 2N3565**

D1-2 Ge

D3 1N5817

D4-7 1N4148

HARM 100KA

BAL 50KA

CLIP SPDT ON-ON
or ON-OFF-ON

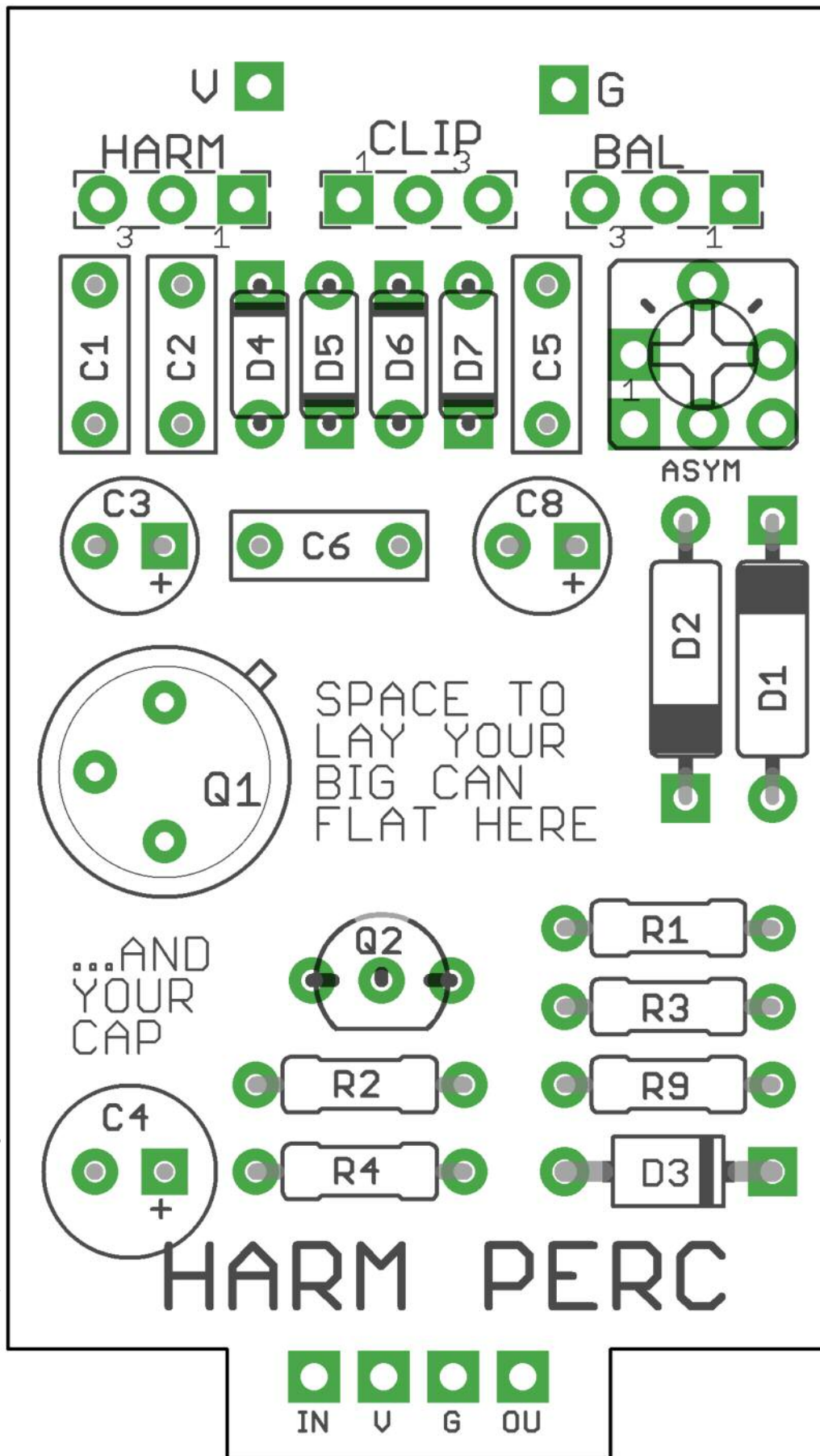
ASYM 10K Trimmer

Values in blue will give you the Albini variation.

CLIP is an optional clipping diode selection switch. D1-2 are the standard clipping. D4-7 are the optional second circuit. If you want to stick with standard, leave out D4-7 and add a jumper as shown on the next page. If you opt for an ON-OFF-ON switch you'll have no clipping in the centre position. Loud!

*There's debate on the ideal hFE for this. We favour lower - <>40.

**Other BJTs will work fine. We supply 2N3565 in a TO-106 case. See page 5 for the pinout of those.



Additional Notes

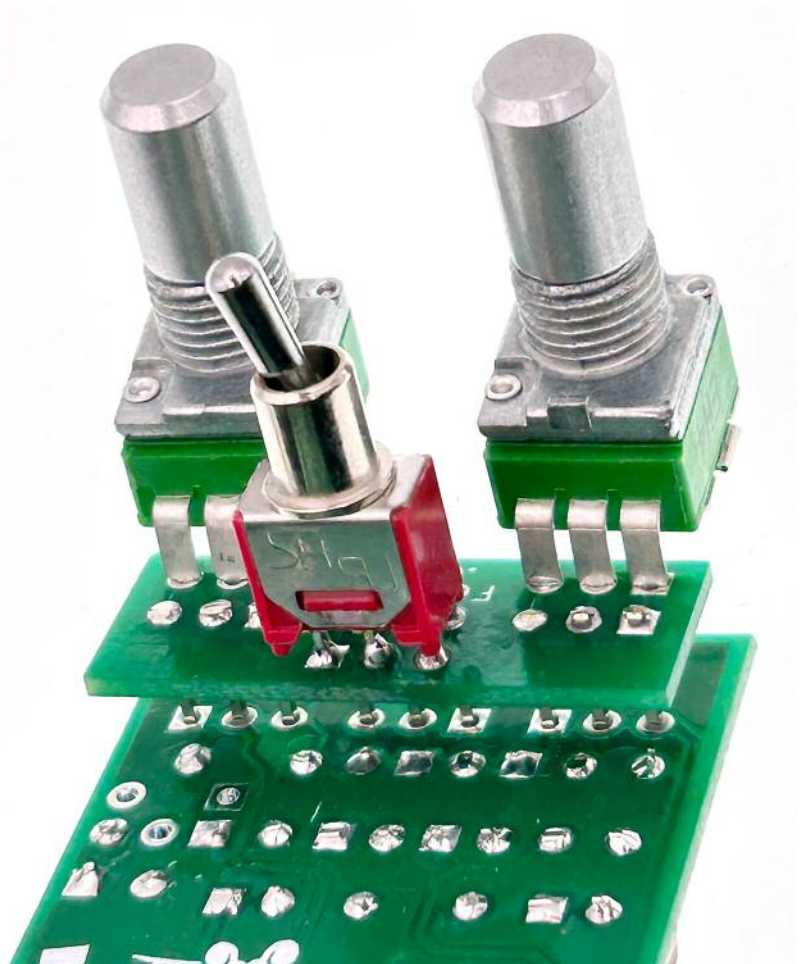
The pads for Q2 are arranged for standard EBC pinout in a TO-92 case. We stock 2N3565 in TO-106 (like little black pills), which will fit fine but you need to identify the pins.

Here's the view from below:



The cover image shows C8 as a large 100u electrolytic. You can use a large cap here, but if your Q1 is large there won't be room to place it flat without bending the legs underneath the cap as you can see. Caps up to 22uf are available nice and small, and won't need to lay flat. They're plenty big enough to filter the power. Sweat it not.

The header pins on your daughterboard should be placed in a row across the centre, with your pots and switch mounted as shown.



Everything else you need is in the
general build doc you've already read.

Head back to that.



FuzzDog.co.uk