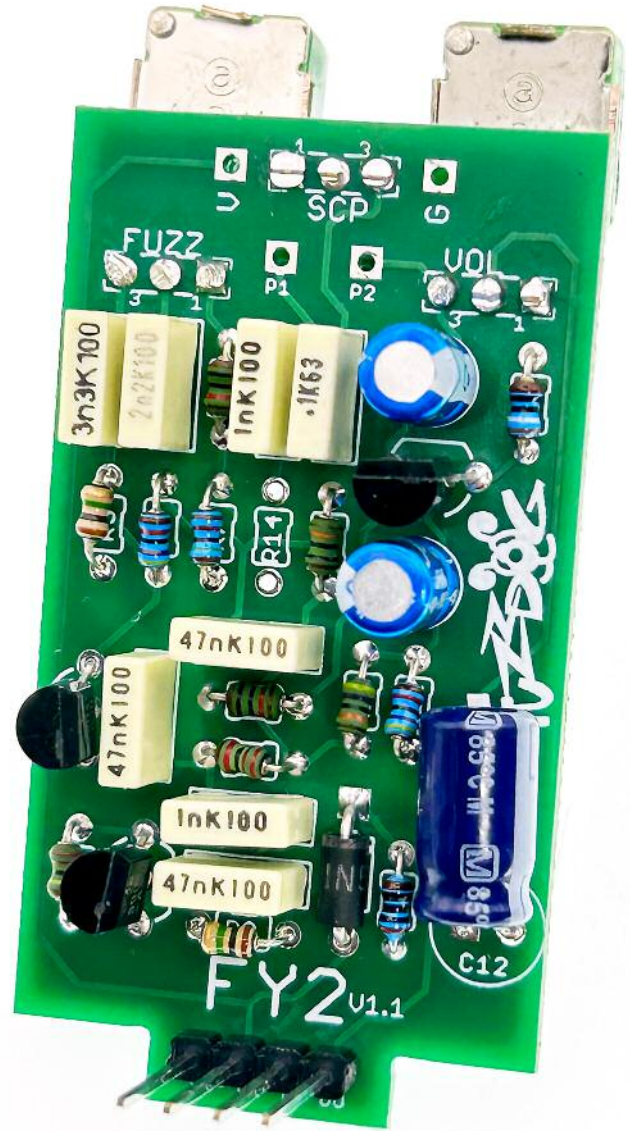


FUZZPUP



FY2

Vintage skanky fuzz tones



IMPORTANT

Before you start...

Grab the general build doc that covers all FuzzPup V2 builds.
Most of the information you need for this build is in there.

Read it? OK, carry on.



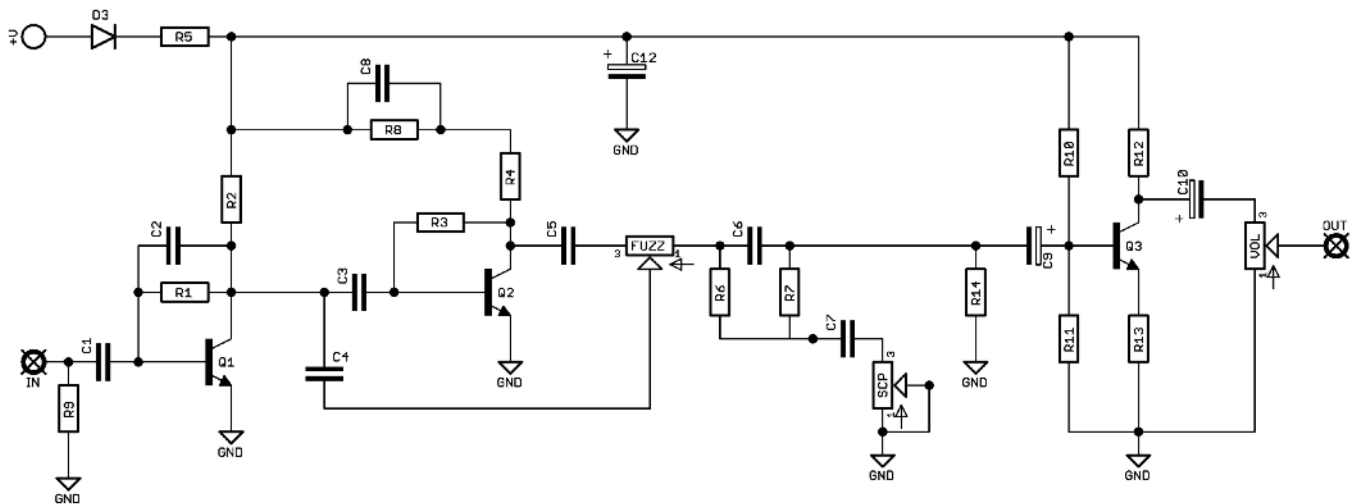
FuzzPups v2

Lovely little boxes of joy with a
standardised build pattern



Contents of this document are ©2022 Pedal Parts Ltd.
No reproduction permitted without the express written
permission of Pedal Parts Ltd. All rights reserved.

Schematic + BOM

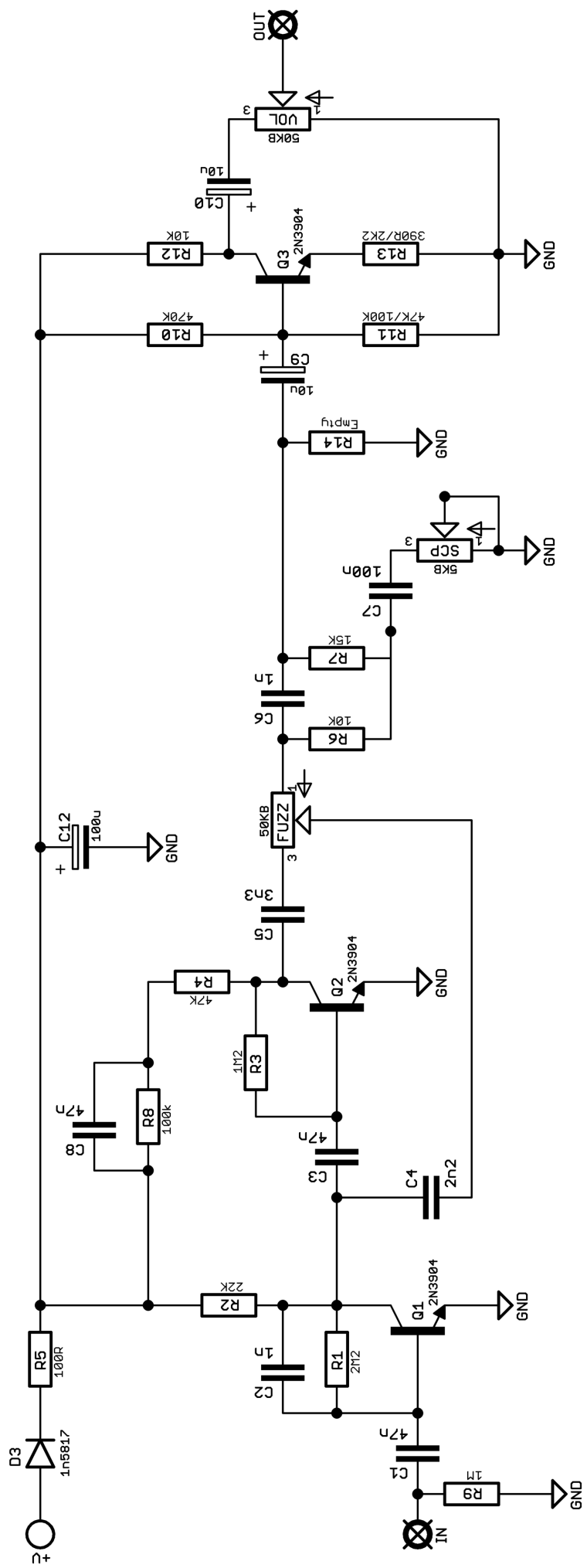


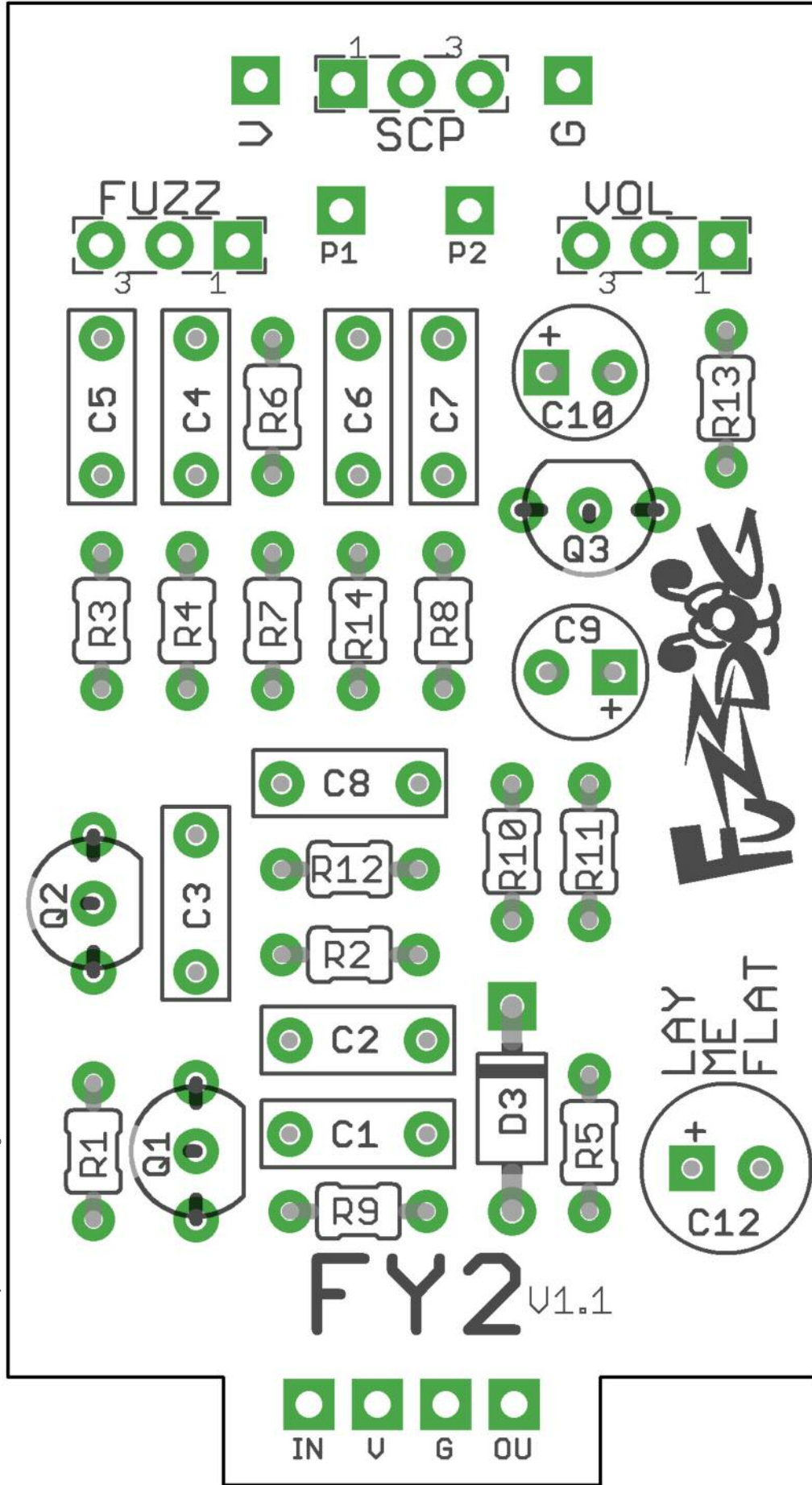
R1	2M2	C1	47n	Q1-3	2N3904
R2	22K	C2	1n	D1	1N5817
R3	1M	C3	47n	FUZZ	50KB
R4	47K	C4	2n2	VOL	50KB
R5	100R	C5	3n3	SCOOP	5KB*
R6	10K	C6	1n		
R7	15K	C7	100n		
R8	100K	C8	47n		
R9	1M	C9	10u elec		
R10	470K	C10	10u elec		
R11	100K (47K)	C12	100u elec		
R12	10K				
R13	2K2 (390R)				
R14	Empty				

The original circuit is very quiet, so we've included an optional post-boost to beef things up a bit. We recommend the values in the standard BOM, which is equivalent to a Big Muff recovery stage. If you want to go really loud then substitute the values in blue for R11 and R13. If you want to go with the stock circuit, leave out Q3, C9-10, R10-14 and jumper pads P1-2.

*There's also an optional Scoop control. To omit this simply leave out the Scoop pot and add a jumper as shown.

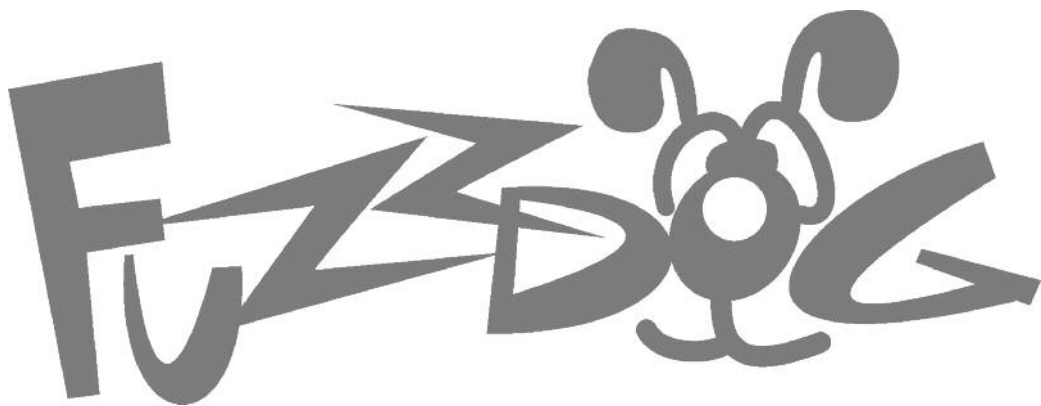






Everything else you need is in the
general build doc you've already read.

Head back to that.



FuzzDog.co.uk