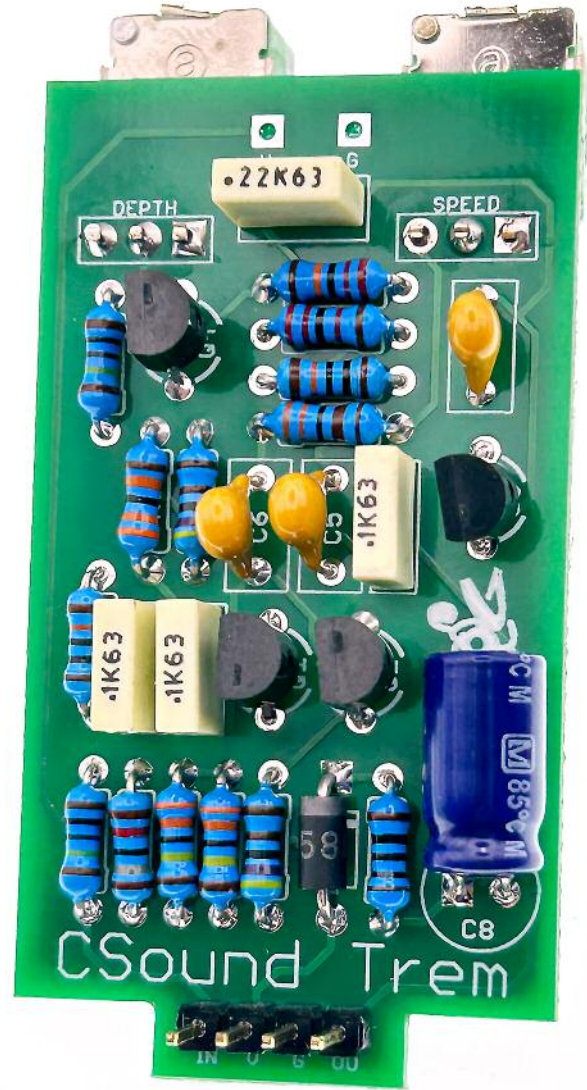


Fuzz Pup



CS Trem

Colorsound's simple but
sweet box of wobbles



IMPORTANT

Before you start...

Grab the general build doc that covers all FuzzPup V2 builds.
Most of the information you need for this build is in there.

Read it? OK, carry on.



FuzzPups v2

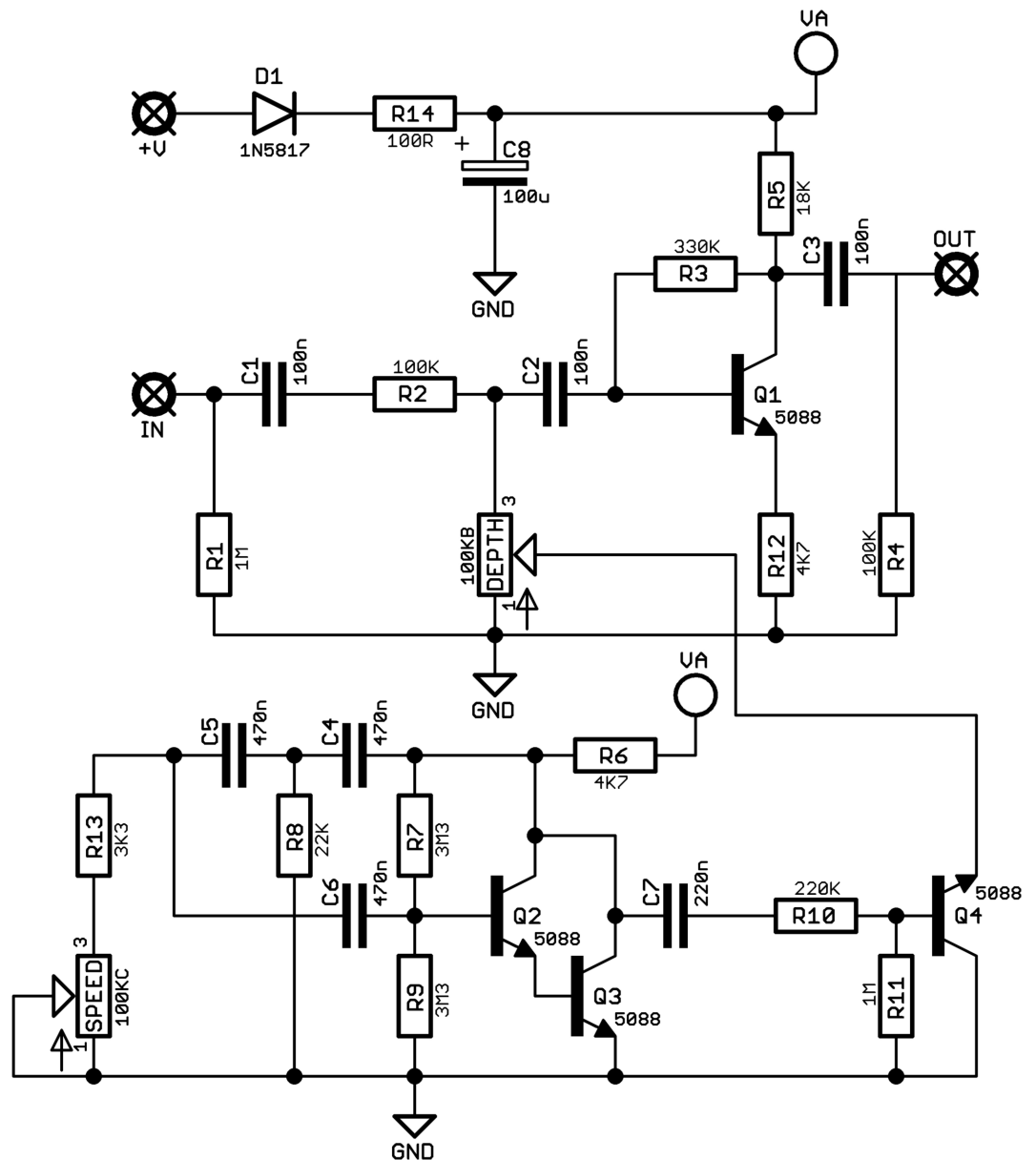
Lovely little boxes of joy with a
standardised build pattern

Contents of this document are ©2022 Pedal Parts Ltd.
No reproduction permitted without the express written
permission of Pedal Parts Ltd. All rights reserved.

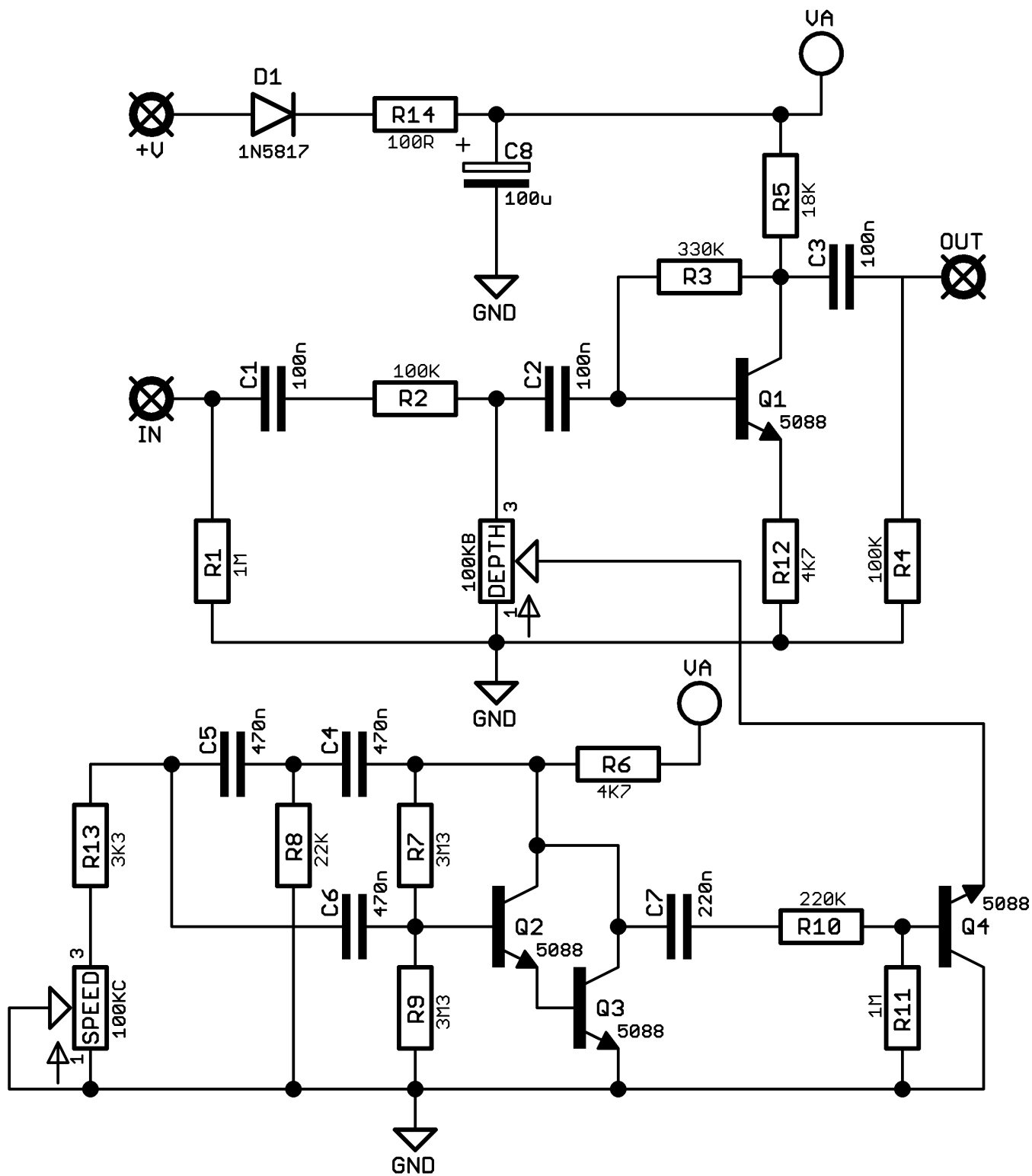


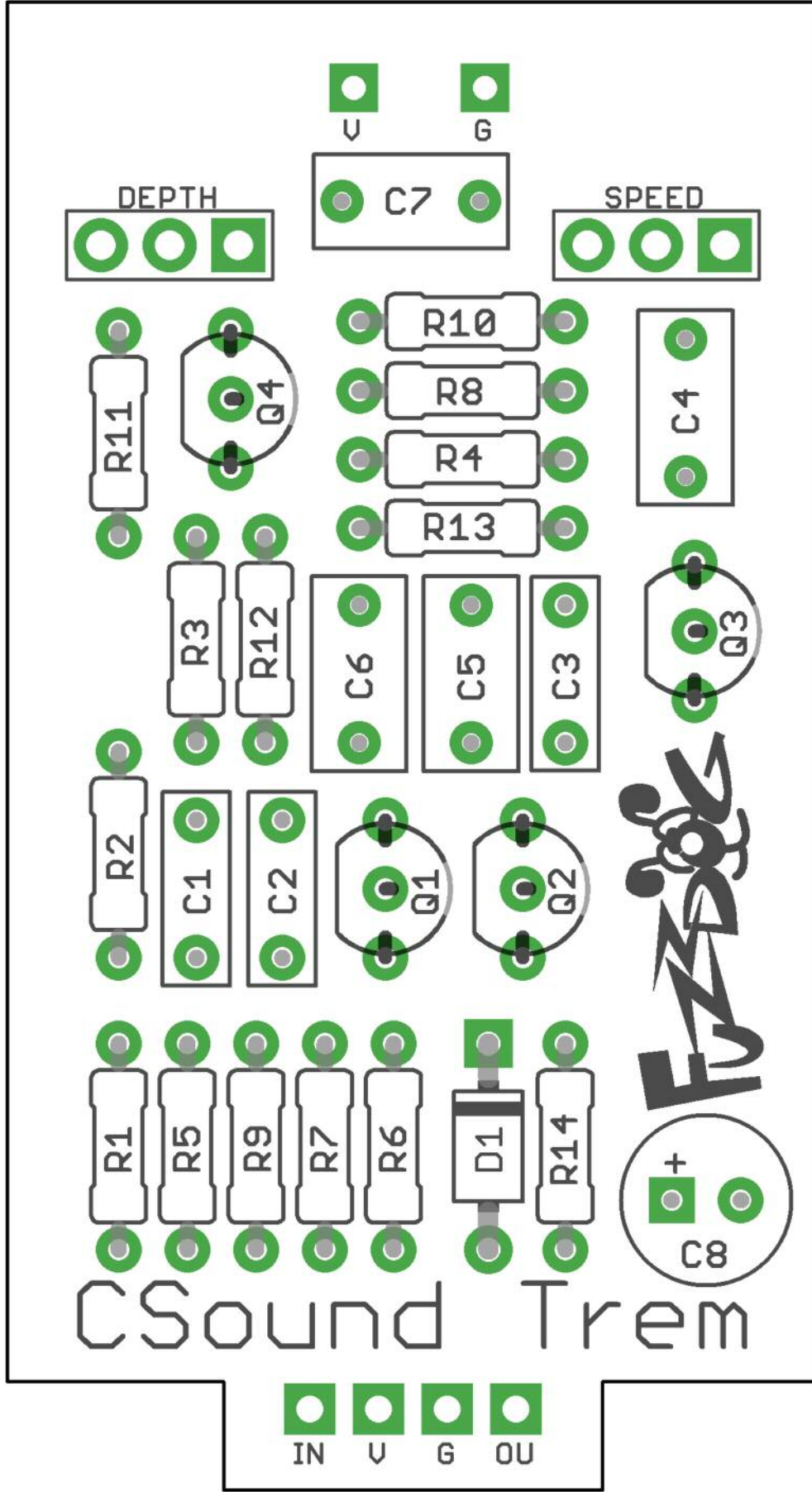
Schematic + BOM

R1	1M
R2	330K
R3	330K
R4	100K
R5	18K
R6	4K7
R7	3M3
R8	22K
R9	3M3
R10	220K
R11	1M
R12	4K7
R13	3K3
R14	100R
C1	100n
C2	100n
C3	100n
C4	470n*
C5	470n*
C6	470n*
C7	220n
C8	100u elec
D1	1N5817
Q1-4	2N5088
DEP	100KB
SPD	100KC



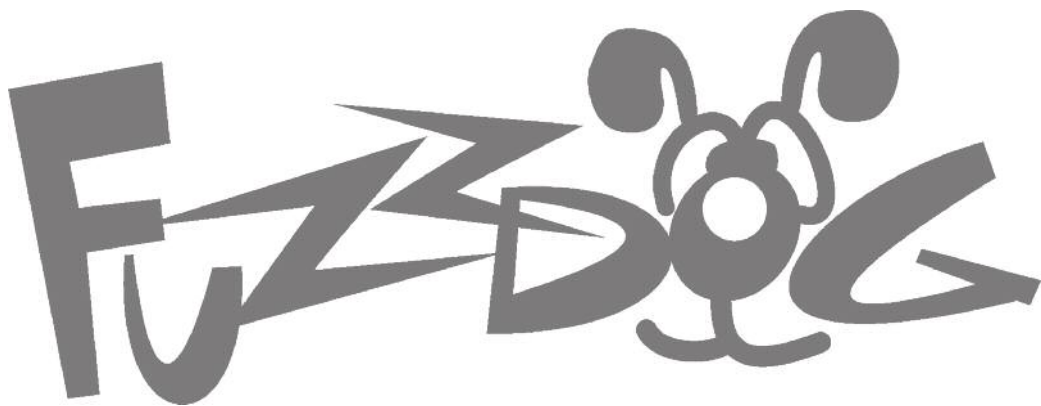
*Film caps will be too tall to fit into the enclosure at this value, so use multilayer ceramic (MLCC).





Everything else you need is in the
general build doc you've already read.

Head back to that.



FuzzDog.co.uk