

BossTone

Classic fuzz by Jordan



IMPORTANT

Before you start...

Grab the general build doc that covers all FuzzPup V2 builds.
Most of the information you need for this build is in there.

Read it? OK, carry on.



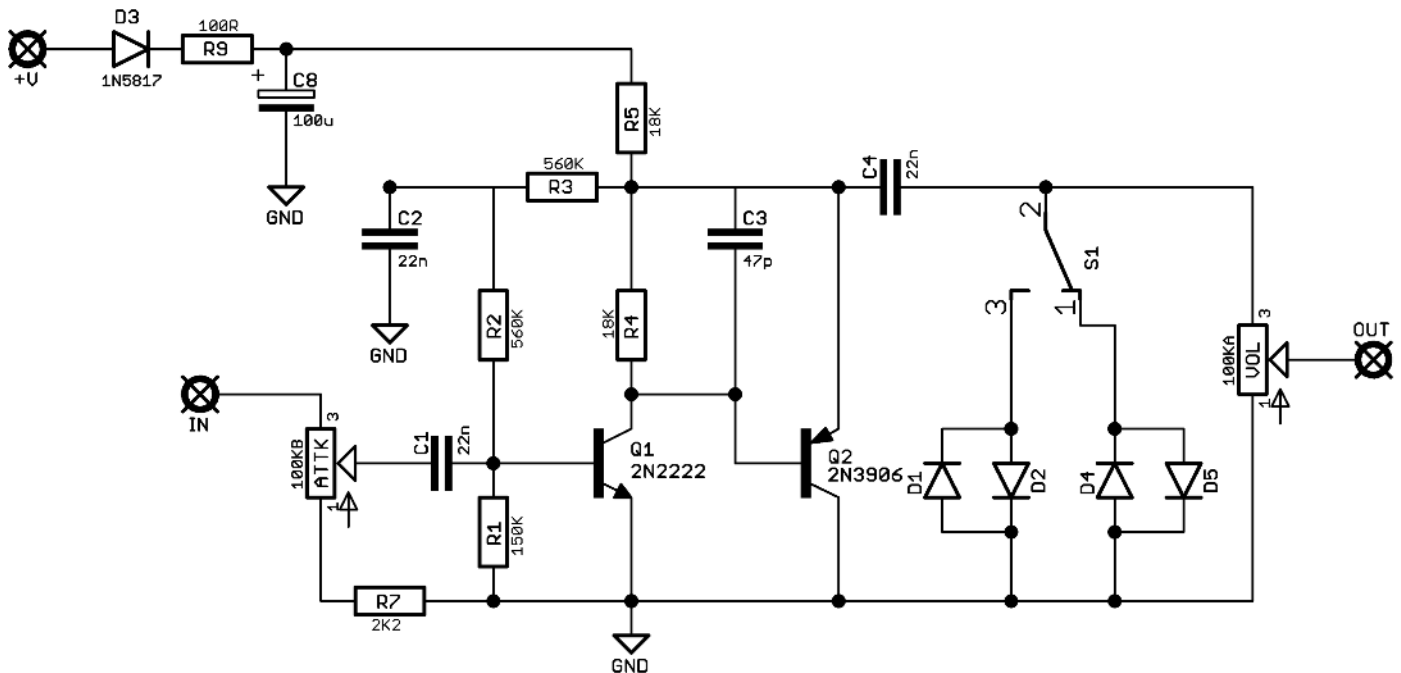
FuzzPups v2

Lovely little boxes of joy with a
standardised build pattern



Contents of this document are ©2022 Pedal Parts Ltd.
No reproduction permitted without the express written
permission of Pedal Parts Ltd. All rights reserved.

Schematic + BOM



R1 150K
R2 560K
R3 560K
R4 18K
R5 18K
R7 2K2*
R9 100R

C1 22n
C2 22n
C3 47p
C4 22n
C8 100u elec

D1-2 1N4148
D3 1N5817
D4-5 **

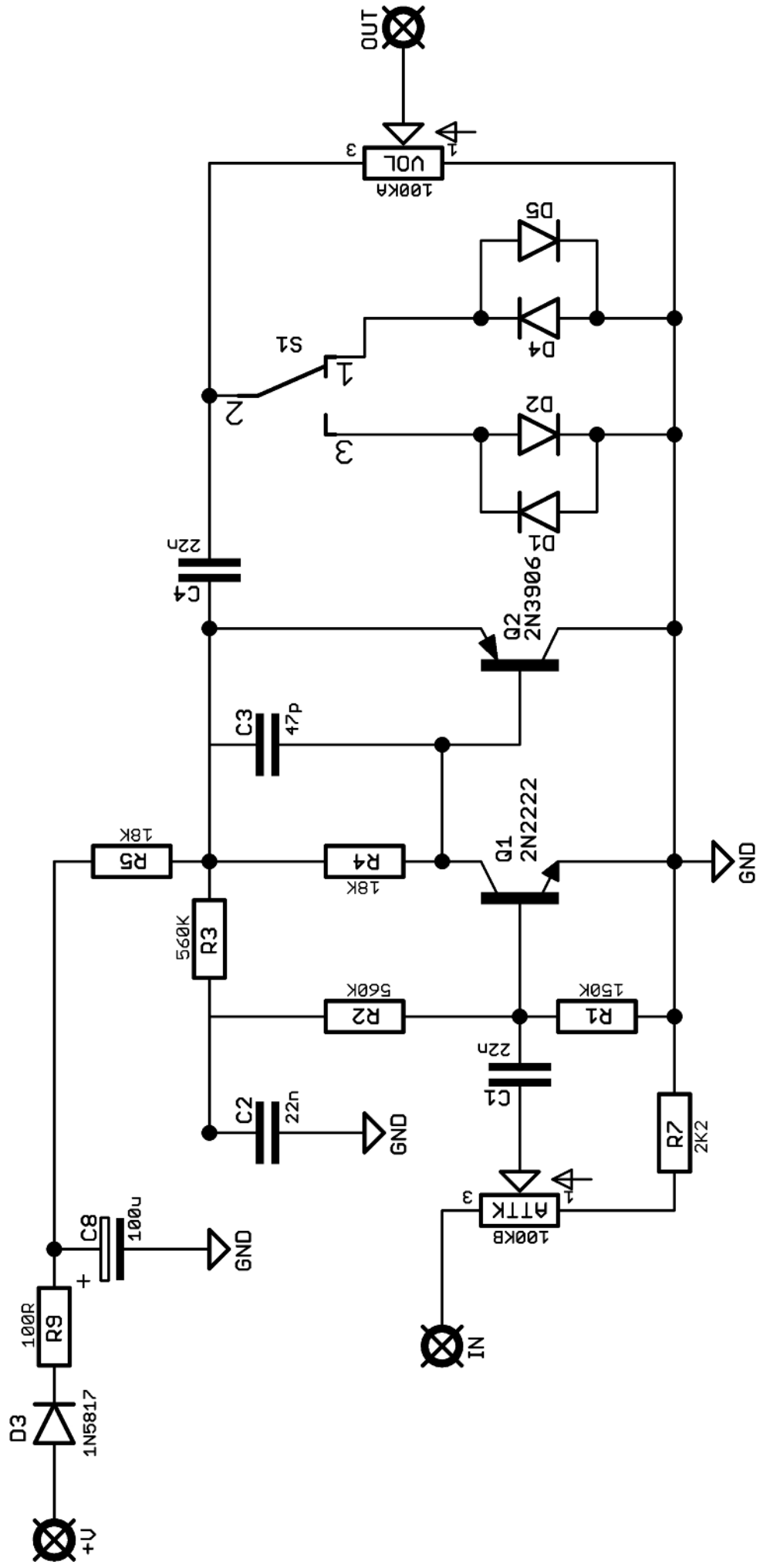
Q1 2N2222
Q2 2N3906

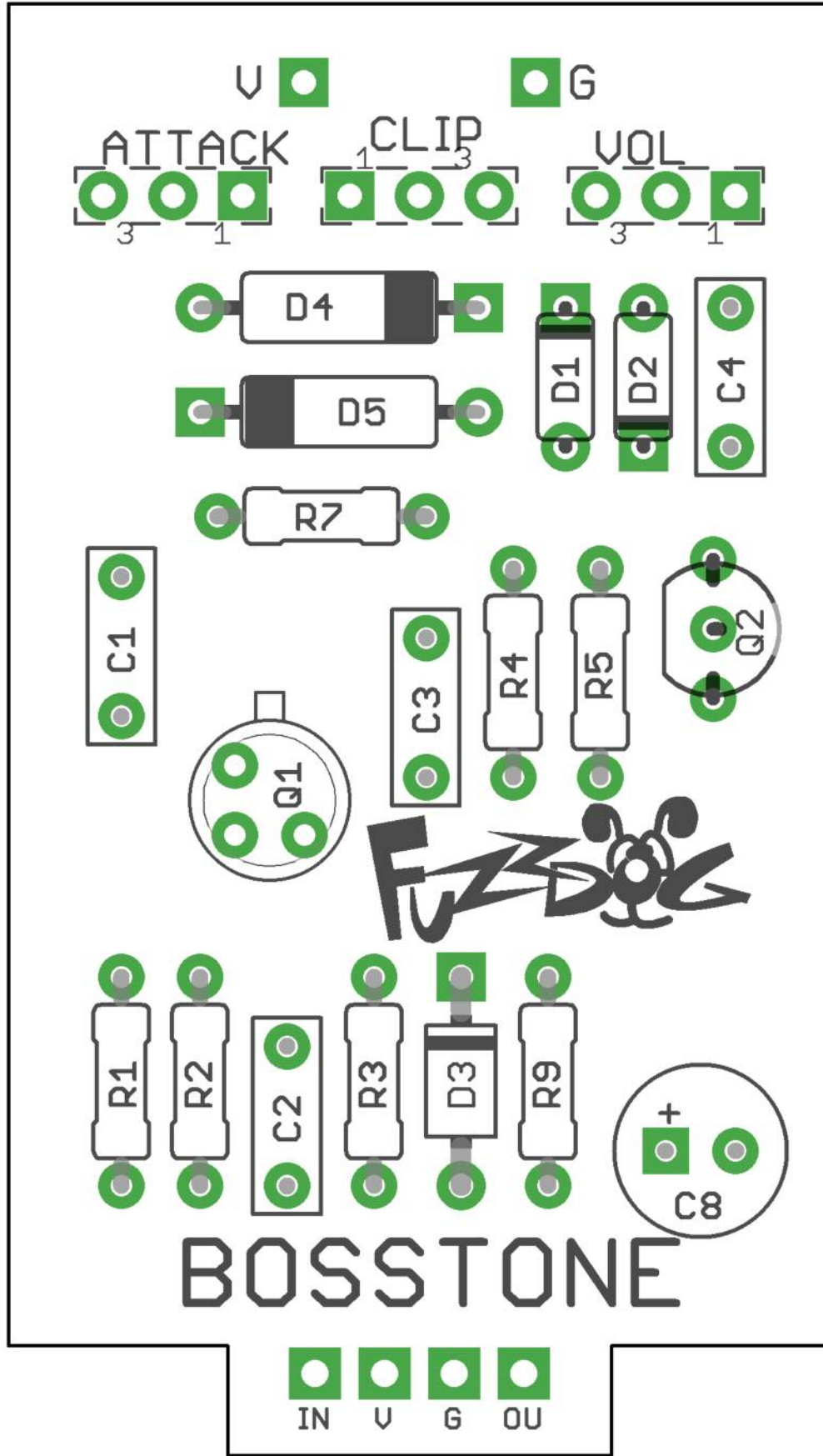
ATTK 100KB
VOL 100KA

S1 SPDT ON-ON**

*Added to stop the Attack control 'bottoming out'.

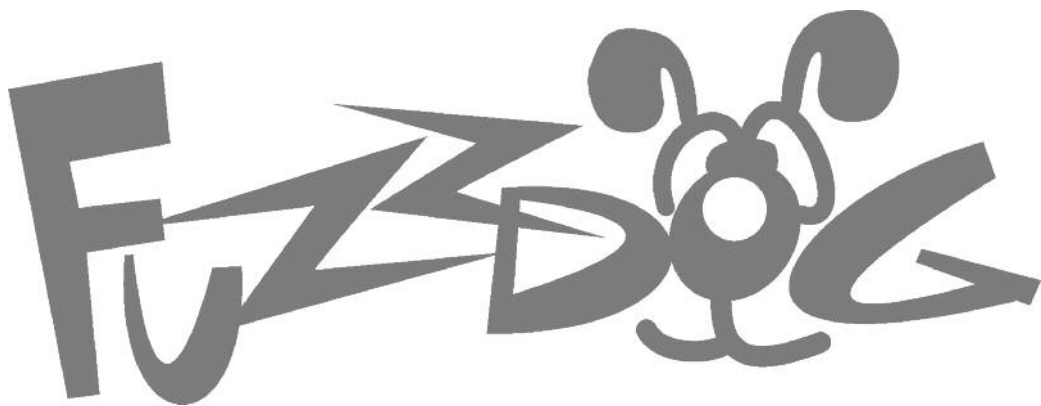
**Spots for additional clipping options and a toggle to switch between them. No rules here. Try what you like or leave them out. If you're sticking with only D1-2 you need to add a jumper on the CLIP pads - see the image on page 1.





Everything else you need is in the
general build doc you've already read.

Head back to that.



FuzzDog.co.uk