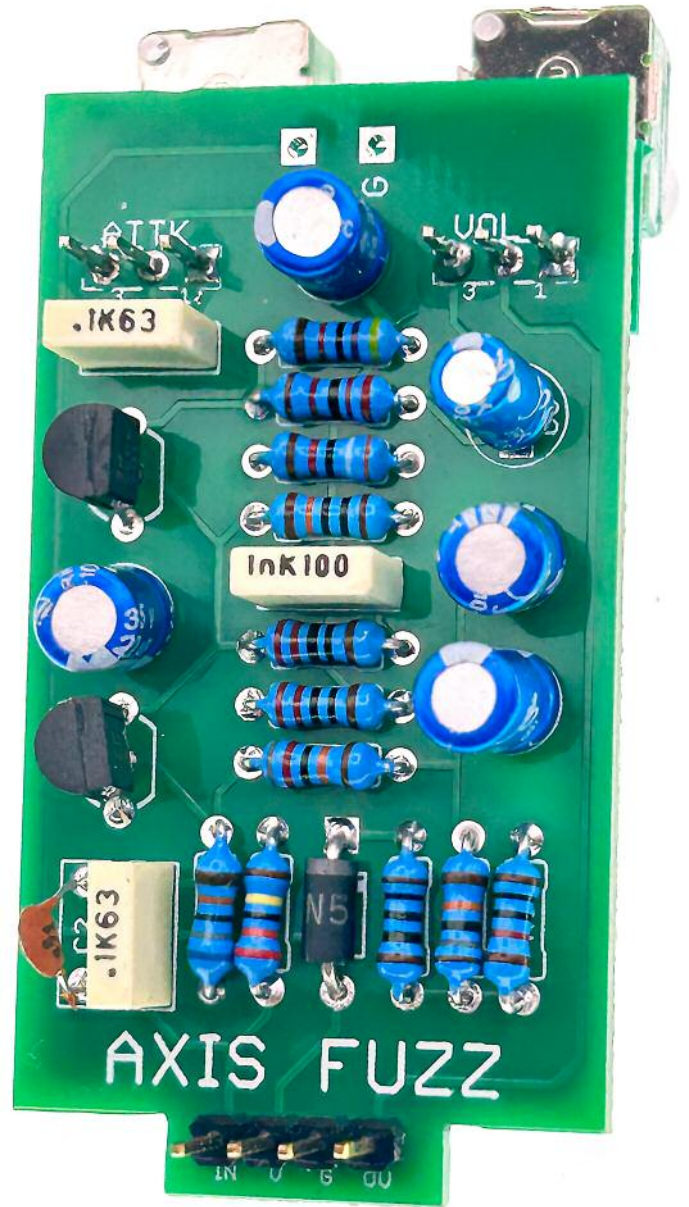


# Fuzz Pup



## Axis

Classic silicon fuzz fun



# IMPORTANT

## Before you start...

Grab the general build doc that covers all FuzzPup V2 builds.  
Most of the information you need for this build is in there.

Read it? OK, carry on.



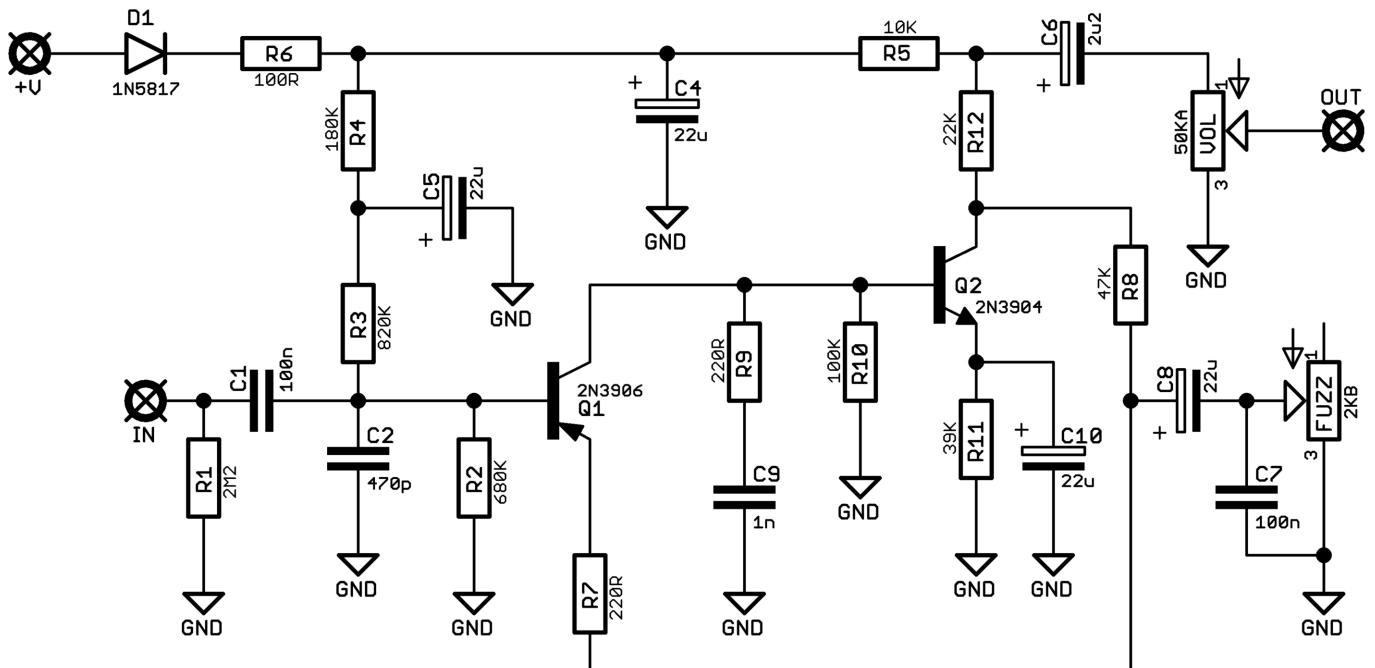
## FuzzPups v2

Lovely little boxes of joy with a  
standardised build pattern

Contents of this document are ©2022 Pedal Parts Ltd.  
No reproduction permitted without the express written  
permission of Pedal Parts Ltd. All rights reserved.



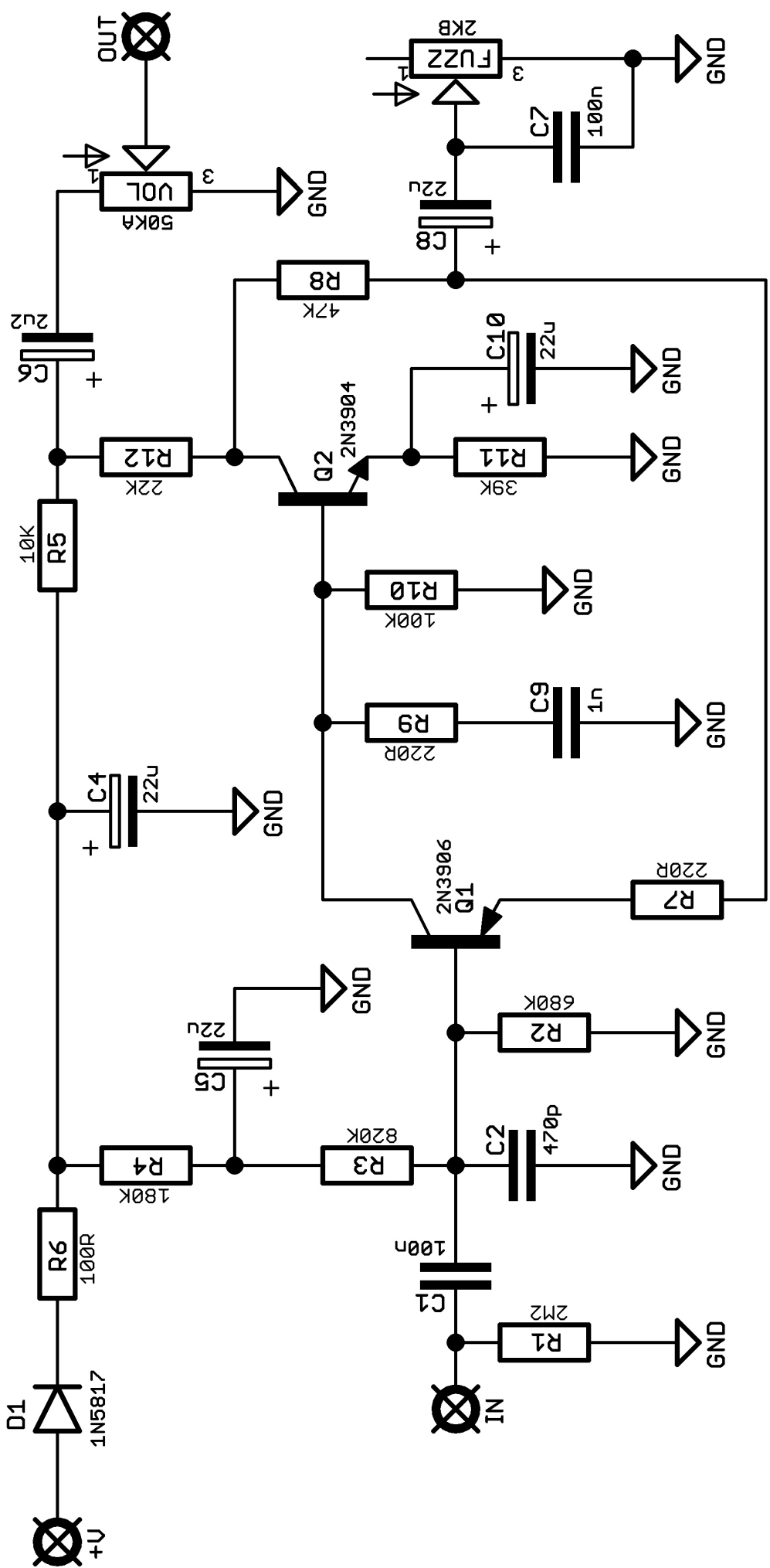
# Schematic + BOM

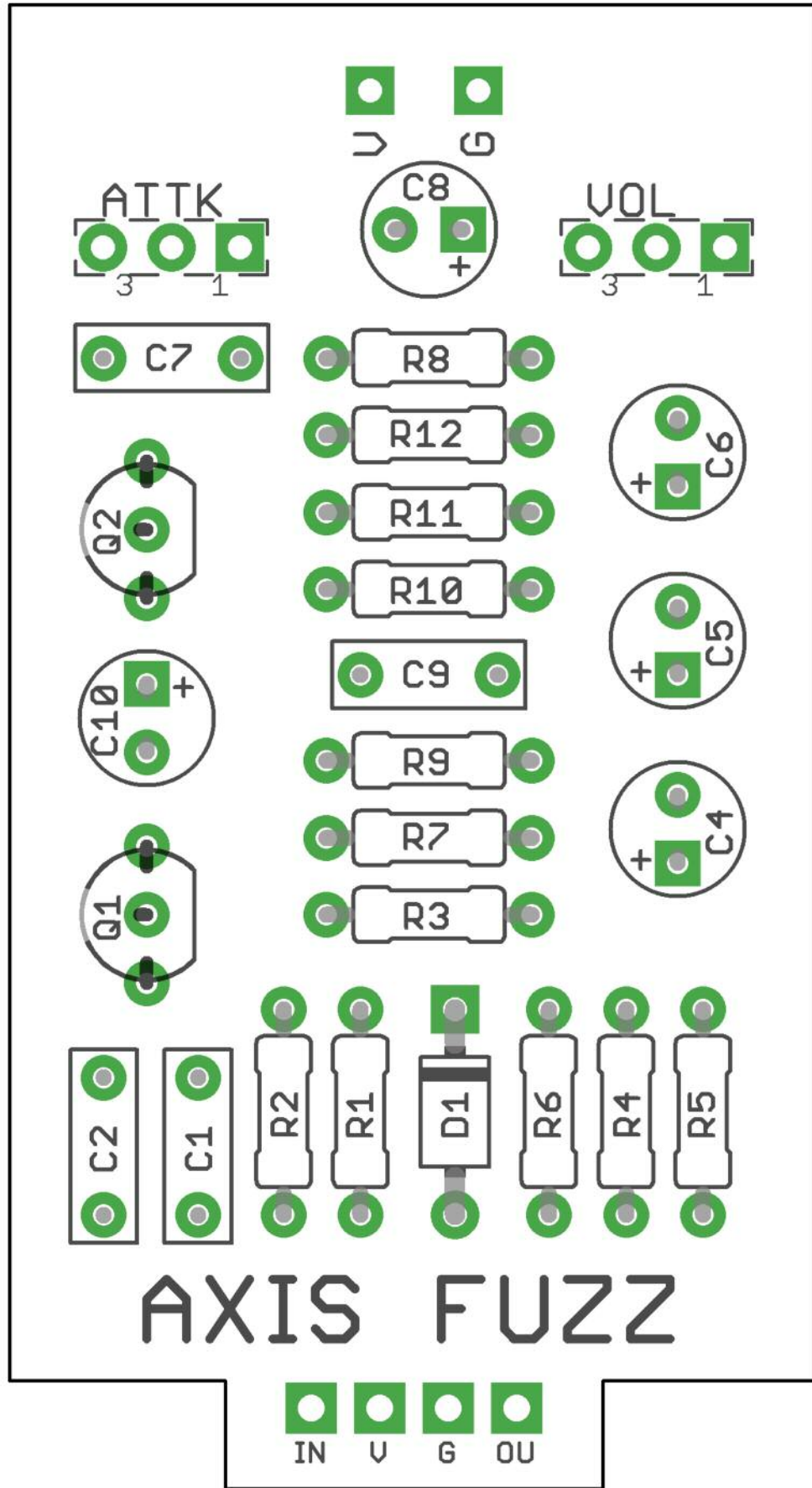


R1 2M2  
R2 680K  
R3 820K  
R4 180K  
R5 10K  
R6 100R  
R7 220R  
R8 47K  
R9 220R  
R10 100K  
R11 39K  
R12 22K

C1 100n  
C2 470p  
C4 22u elec  
C5 22u elec  
C6 2u2 elec  
C7 100n  
C8 22u elec  
C9 1n  
C10 22u elec

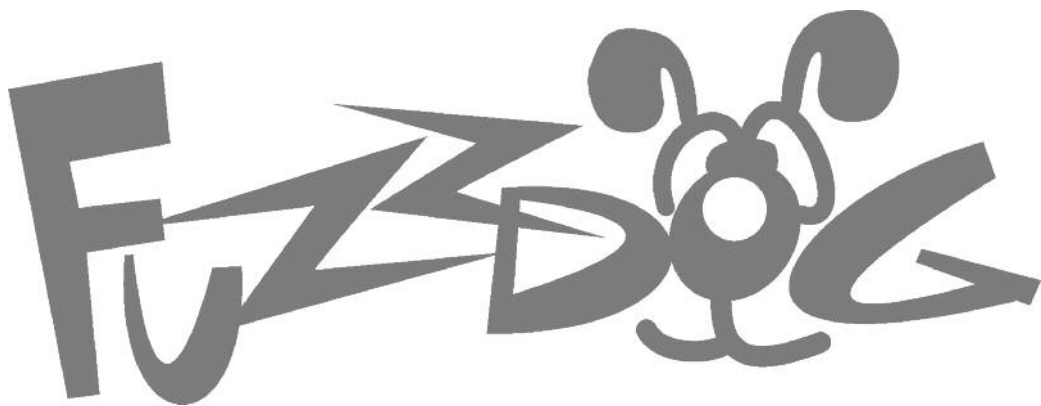
D1 1N5817  
Q1 2N3906  
Q2 2N3904  
FUZZ 2KB  
VOL 50KA





Everything else you need is in the  
general build doc you've already read.

Head back to that.



**[FuzzDog.co.uk](http://FuzzDog.co.uk)**