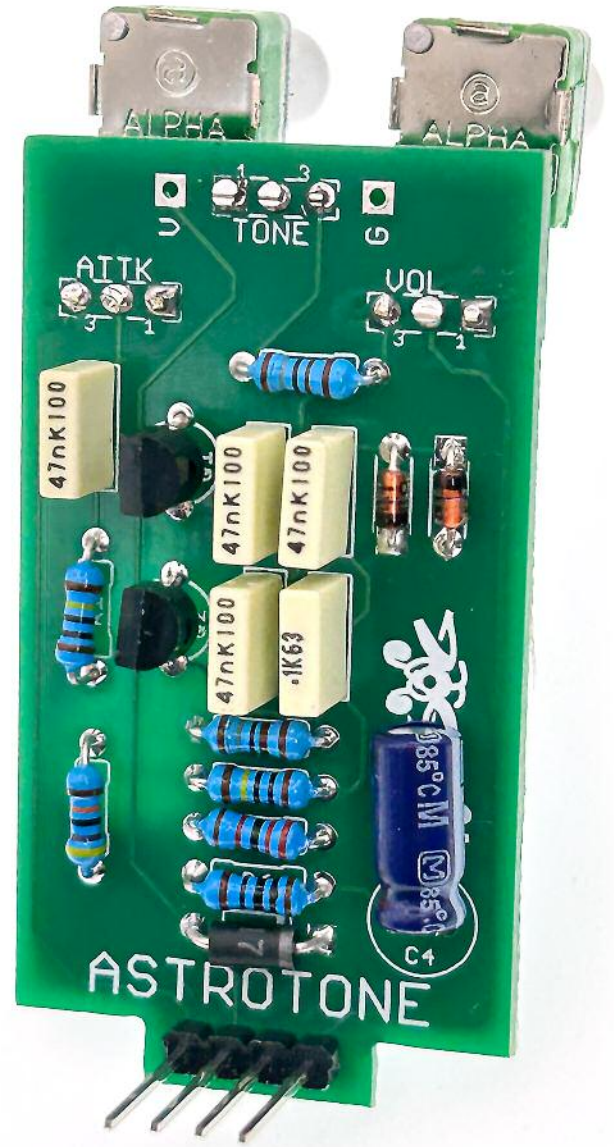


Fuzz Pup



AstroTone

Lovely vintage fuzz tones



IMPORTANT

Before you start...

Grab the general build doc that covers all FuzzPup V2 builds.
Most of the information you need for this build is in there.

Read it? OK, carry on.



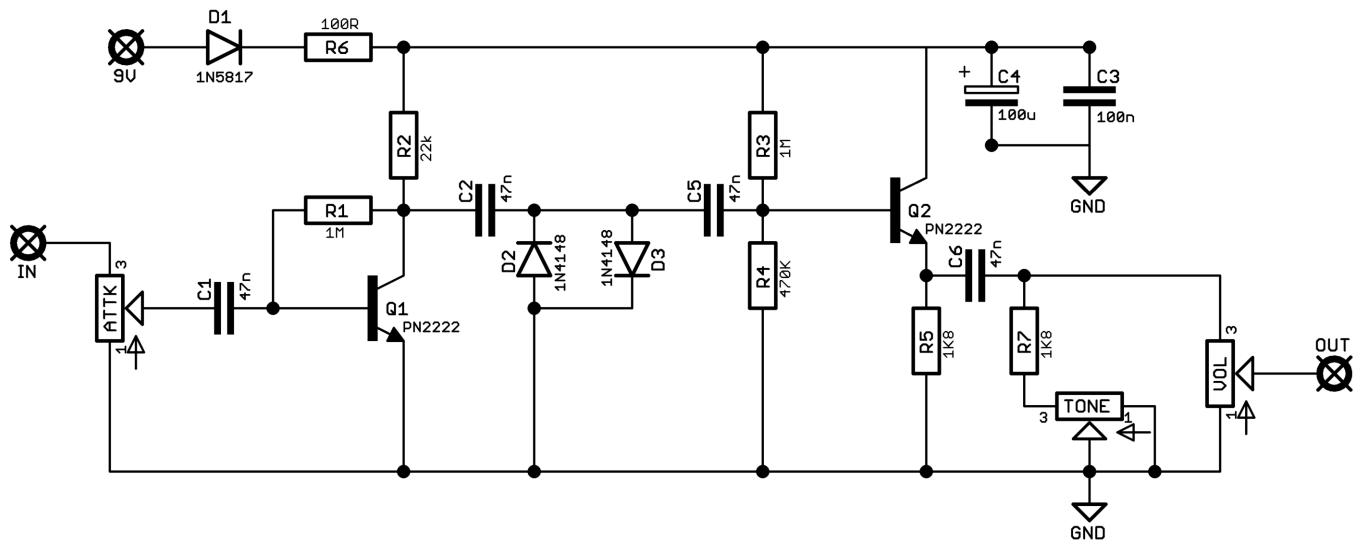
FuzzPups v2

Lovely little boxes of joy with a
standardised build pattern



Contents of this document are ©2022 Pedal Parts Ltd.
No reproduction permitted without the express written
permission of Pedal Parts Ltd. All rights reserved.

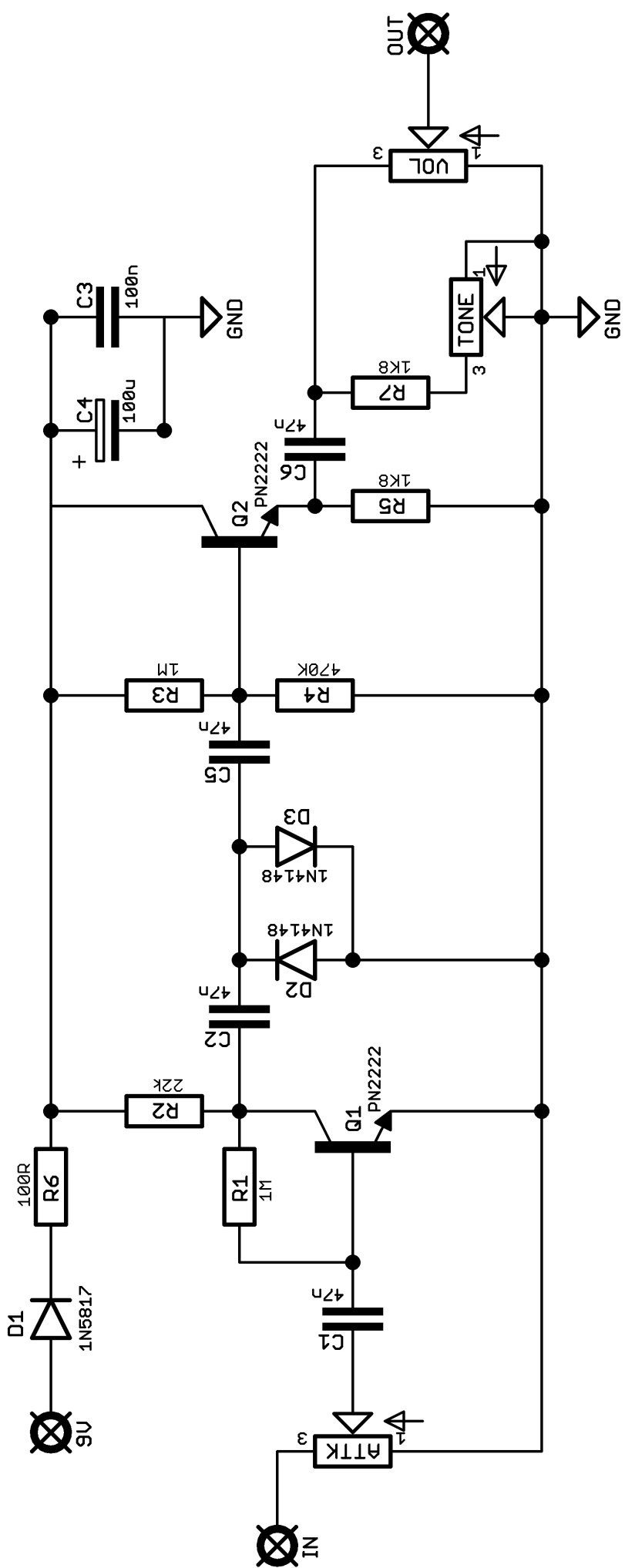
Schematic + BOM

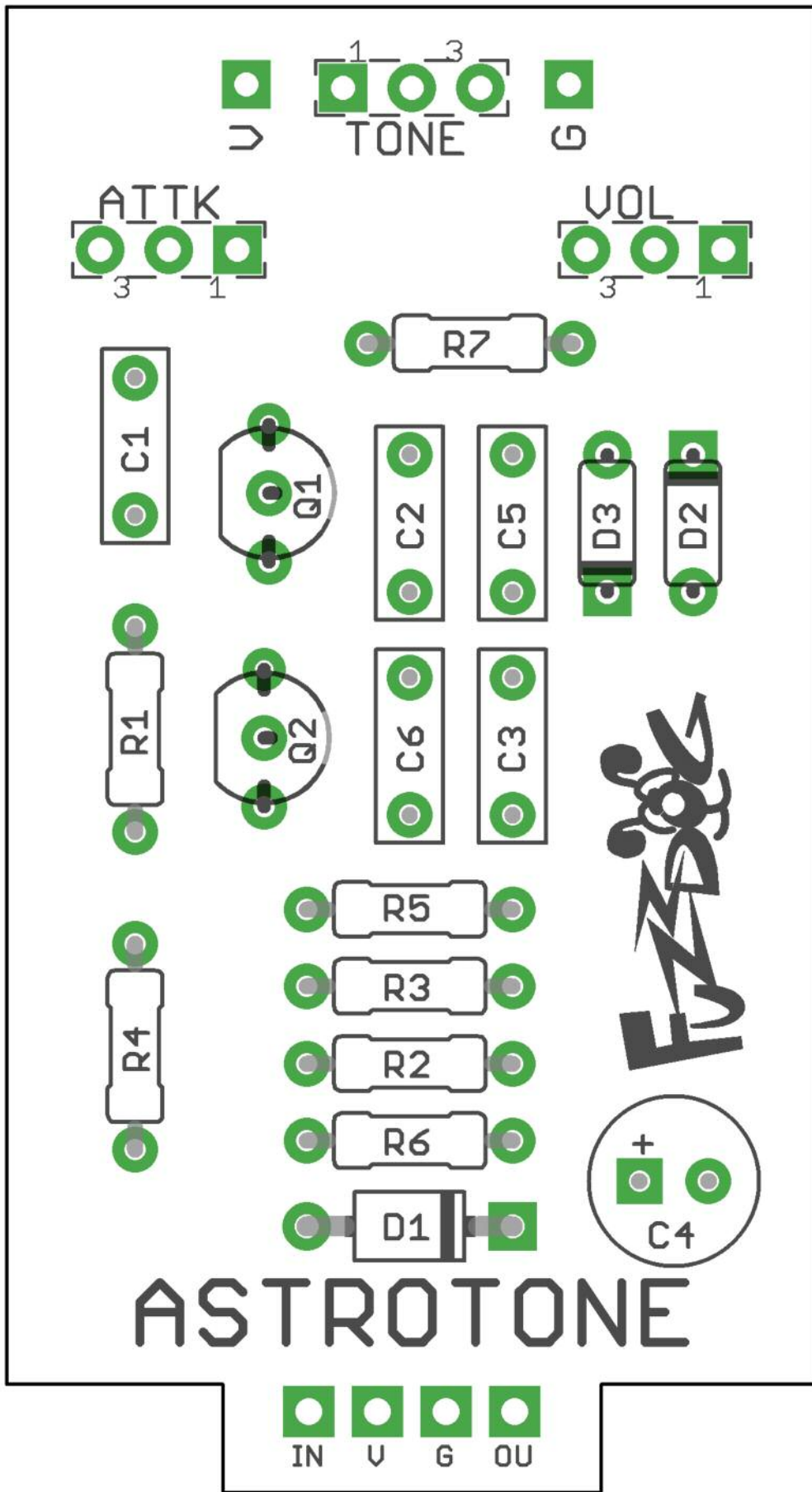


R1	1M	C1	47n	D1	1N5817
R2	22K	C2	47n	D2-3	1N4148
R3	1M	C3	100n	Q1-2*	PN2222
R4	470K	C4	100u elec	ATTN	100KB
R5	1K8	C5	47n	TONE	10KB
R6	100R	C6	47n	VOL	10KA
R7	1K8				

*Try your usual suspect medium gain BJTs - 2N3904, 2N5088 etc.

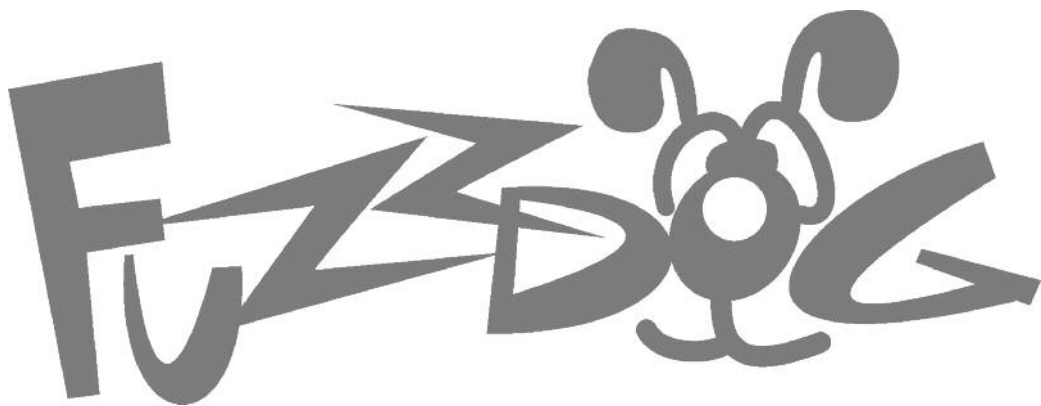
Just to confuse everyone you may come across two different transistors searching for the PN2222. The other type is P2N2222. If you get these the pinout is reversed, so flip them around.





Everything else you need is in the
general build doc you've already read.

Head back to that.



FuzzDog.co.uk