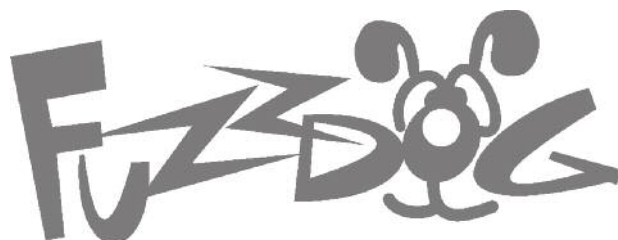




Channel 2

Boner Boost either full bore
or tamed by a Vol pot



IMPORTANT

Before you start...

Grab the general build doc that covers all FuzzPup V2 builds.
Most of the information you need for this build is in there.

Read it? OK, carry on.



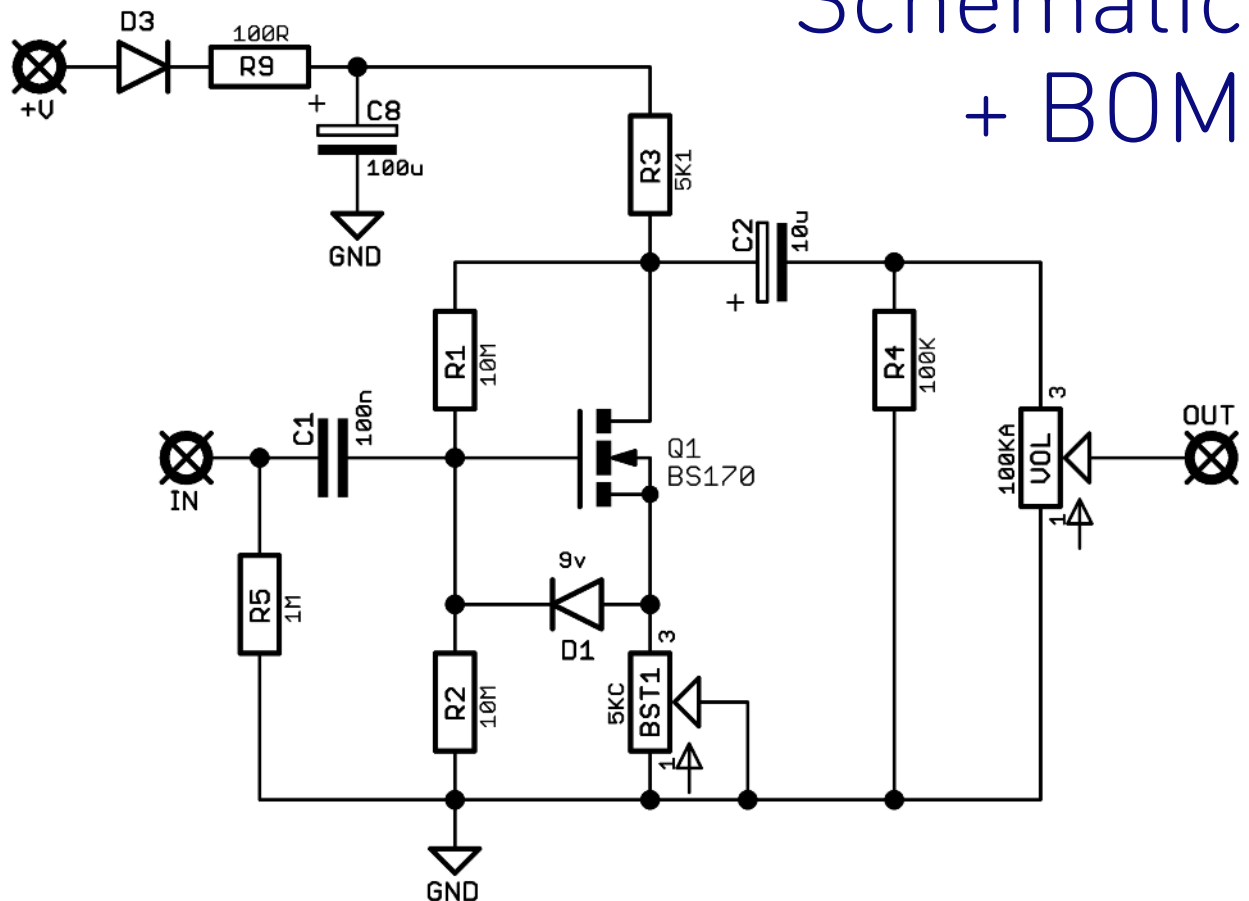
FuzzPups v2

Lovely little boxes of joy with a
standardised build pattern

Contents of this document are ©2022 Pedal Parts Ltd.
No reproduction permitted without the express written
permission of Pedal Parts Ltd. All rights reserved.



Schematic + BOM



Channel 2

Boner Boost

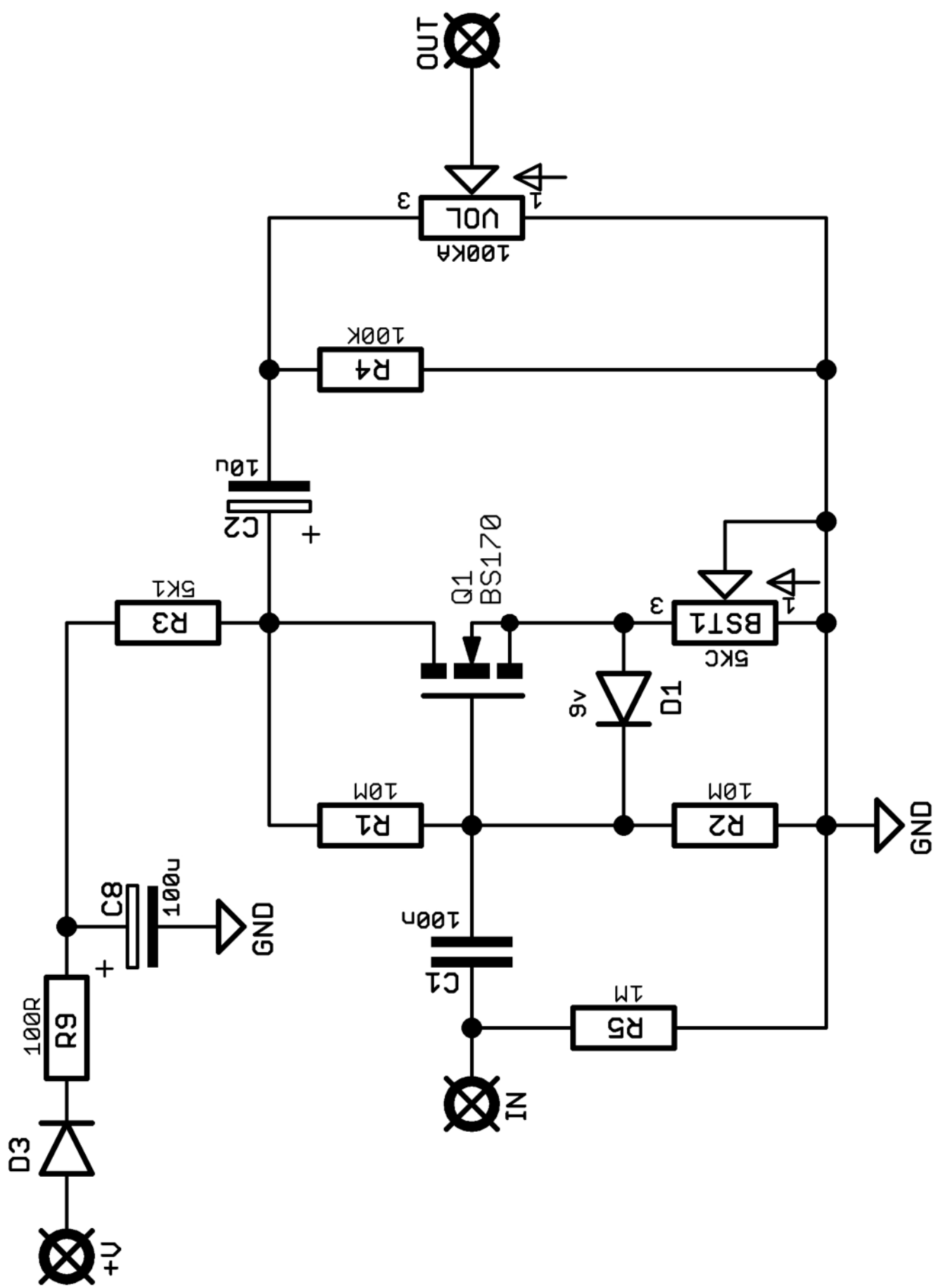
R1	10M
R2	10M
R3	5K1
R4	Empty
R5	Empty
R9	100R
C1	100n
C2	10u elec
C8	100u elec
D1	9V1 Zener
D3	1N5817
Q1	BS170
BST1	5KC
VOL	100KA

R1	10M
R2	10M
R3	5K1
R4	100K
R5	Empty
R9	100R
C1	100n
C2	10u elec
C8	100u elec
D1	9V1 Zener
D3	1N5817
Q1	BS170
BST2	5KC
VOL	Jumper 2-3

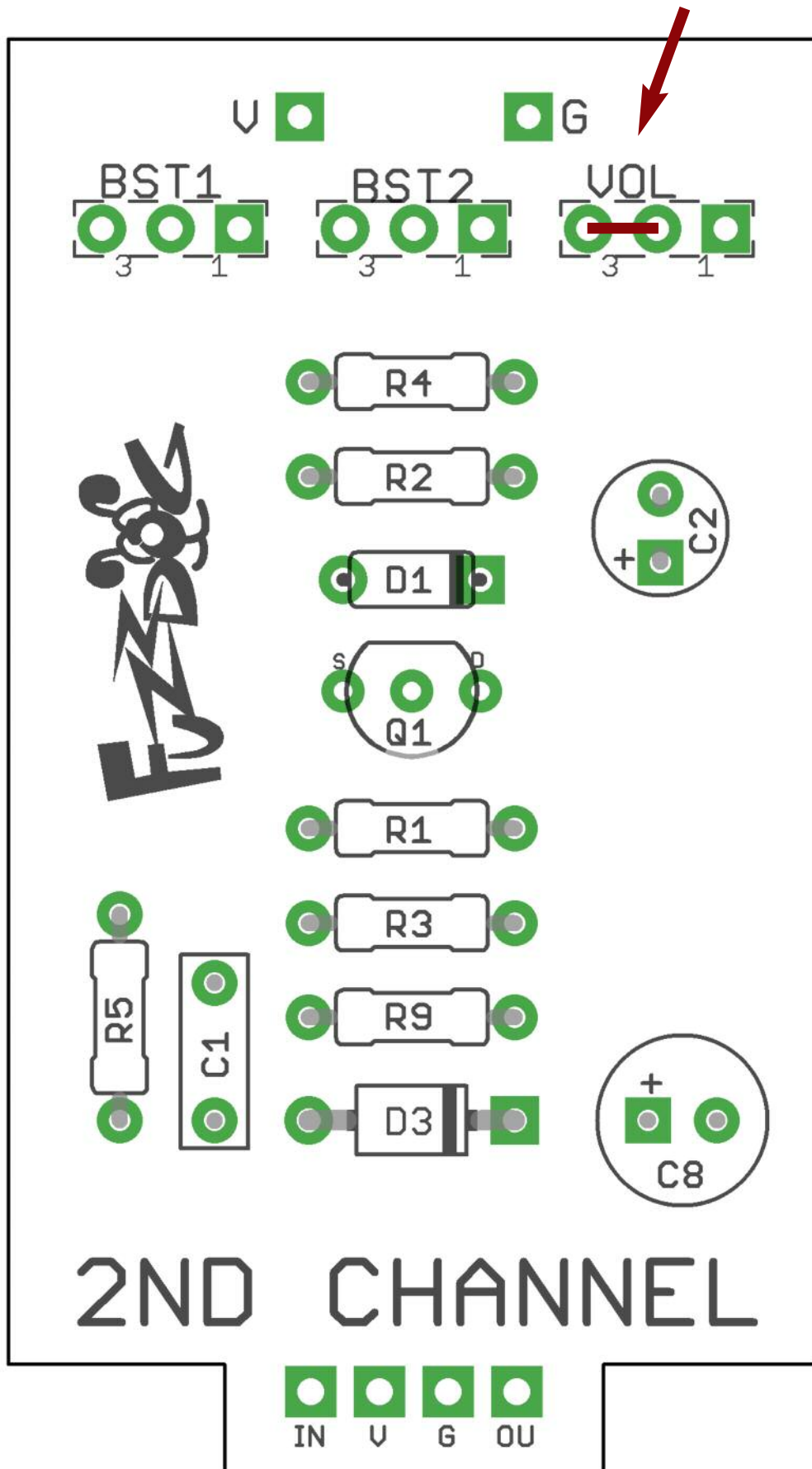
The circuits are basically identical, the Boner omitting the volume control. The idea of the Channel 2 is to emulate a second channel on your amp, with gain and volume controls. Works a treat.

R5 has been added as an optional 1M pulldown/anti-pop resistor. We didn't find it necessary in our builds. Up to you.

See page 5 for Boner jumper position.

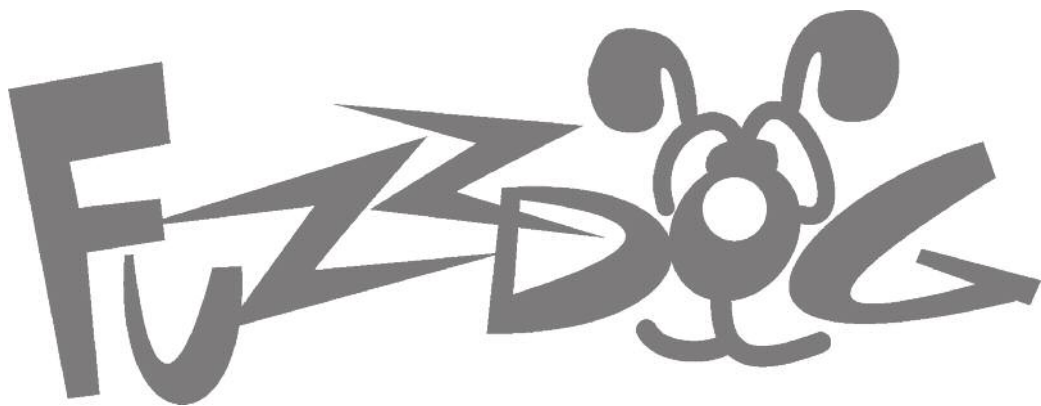


Jumper these pads for Boner Boost.



Everything else you need is in the
general build doc you've already read.

Head back to that.



FuzzDog.co.uk