

# Eunity Buffer

Signal saver extraordinaire

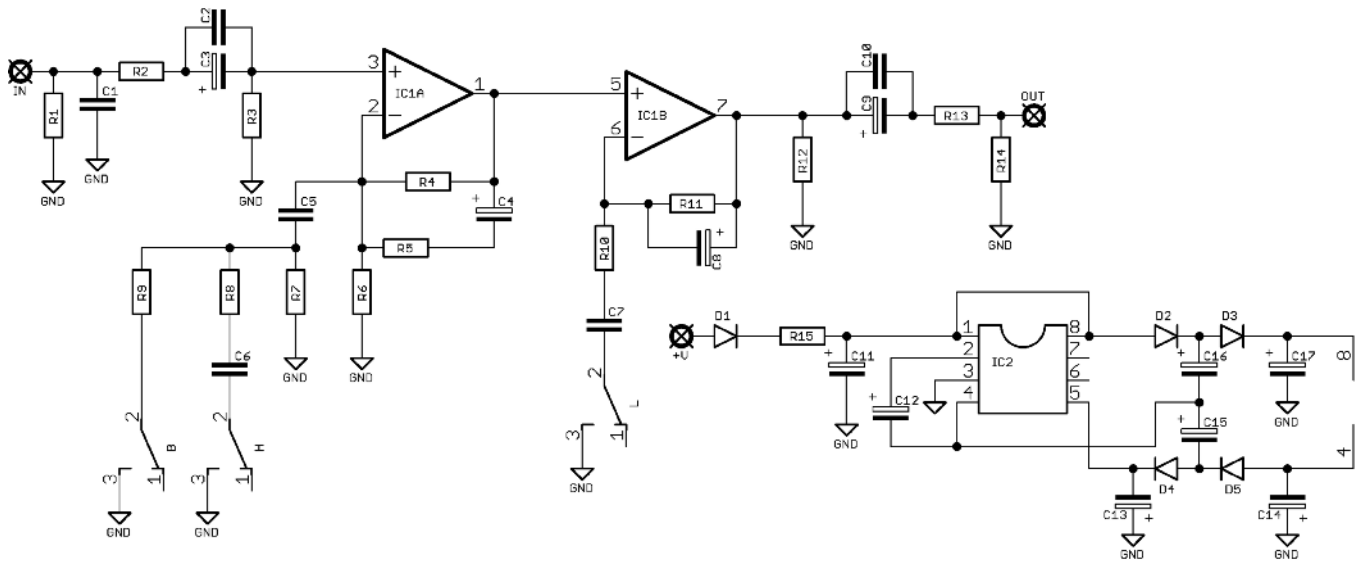


Before you dig in, ensure you download and read the **General Build Guide**.

It contains all the information you need for a successful outcome.



# Schematic + BOM



R1 3M3  
 R2 11K\*  
 R3 3M3  
 R4 100K  
 R5 1K5  
 R6 220K  
 R7 22K  
 R8 470R  
 R9 1K5  
 R10 1K5  
 R11 1K5  
 R12 220K  
 R13 10R  
 R14 3M3  
 R15 100R

C1 4p7\*  
 C2 1u  
 C3 1u elec  
 C4 10u elec  
 C5 220n  
 C6 100n  
 C7 1u  
 C8 1u elec  
 C9 47u elec  
 C10 1u  
 C11 100u elec  
 C12 10u elec  
 C13 10u elec  
 C14 10u elec  
 C15 10u elec  
 C16 10u elec  
 C17 10u elec

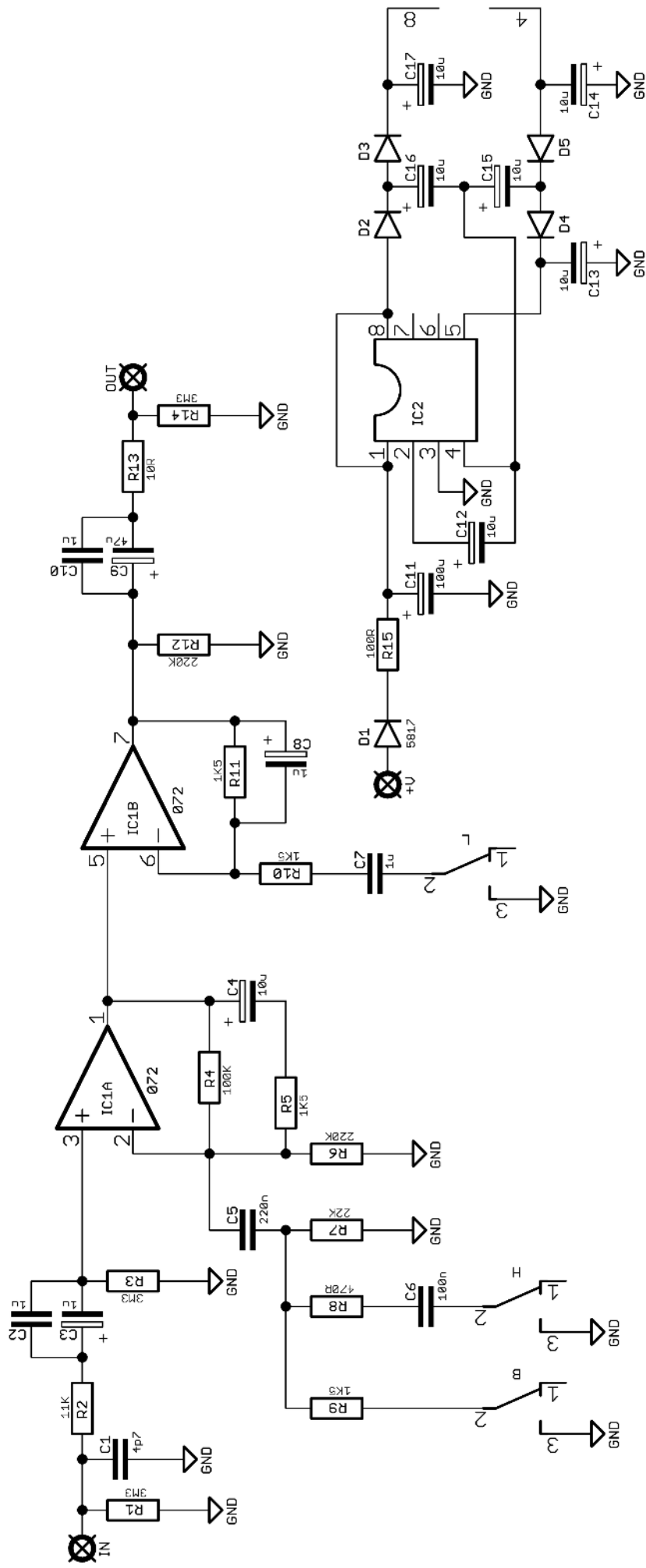
D1-5 1N5817

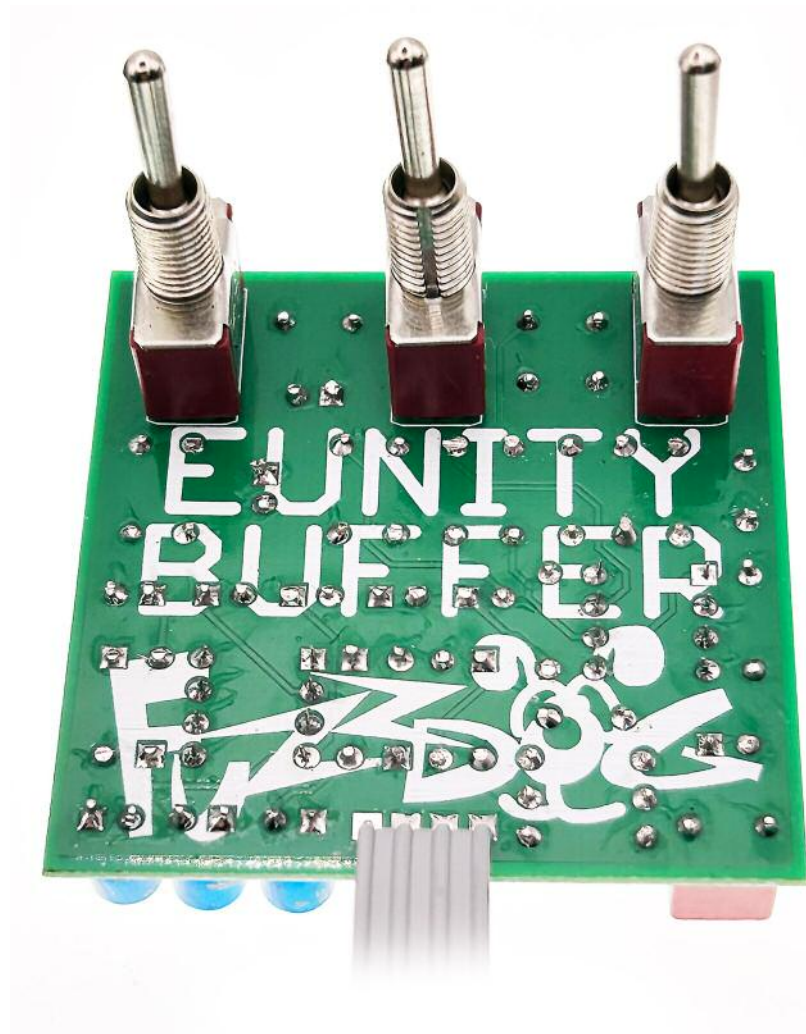
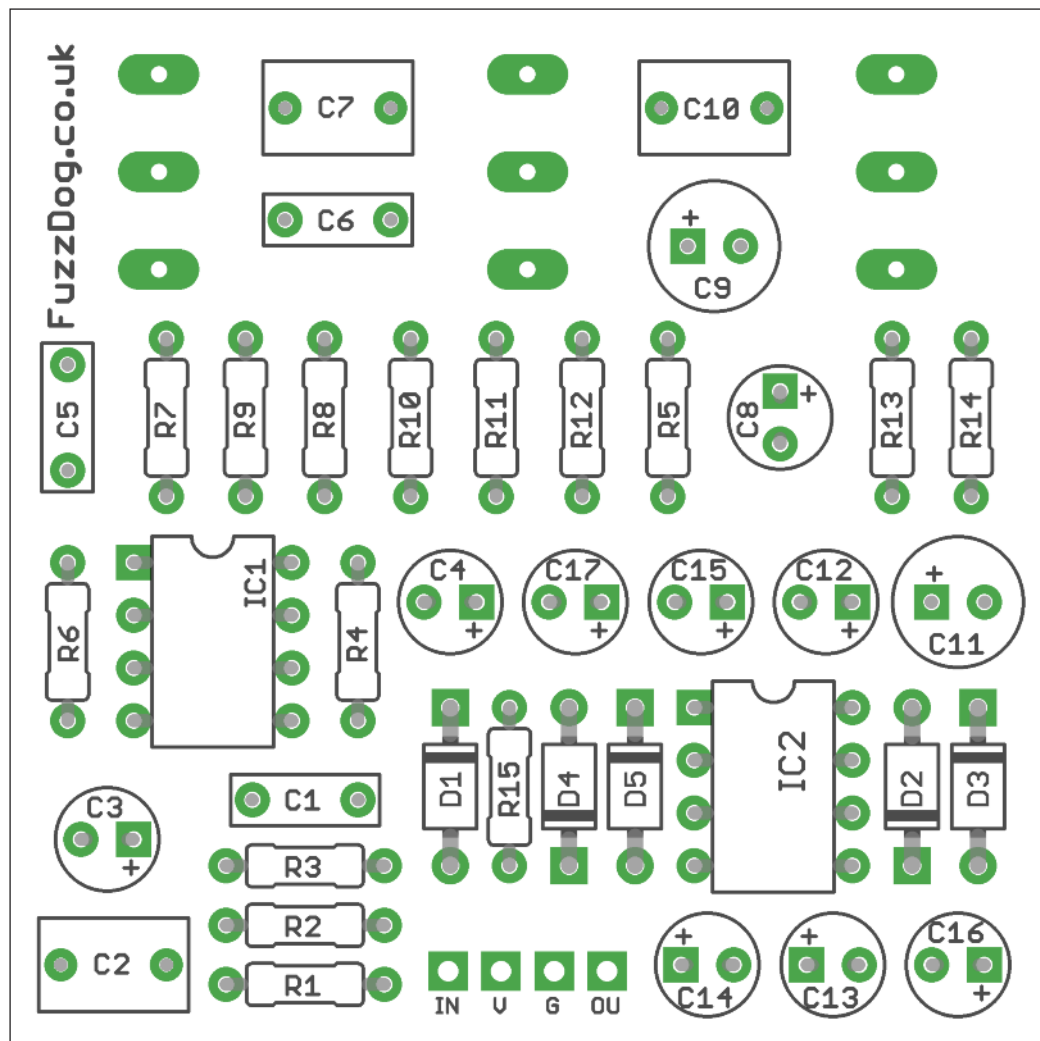
IC1 TL072

IC2 7660SEPA/LT1054

B, H, L SPDT ON-ON

\*You'll hear no difference replacing R2 with 10K.  
 C1 is 3pf in the original but who has one of those on hand? Closest value is fine.





# Drilling template

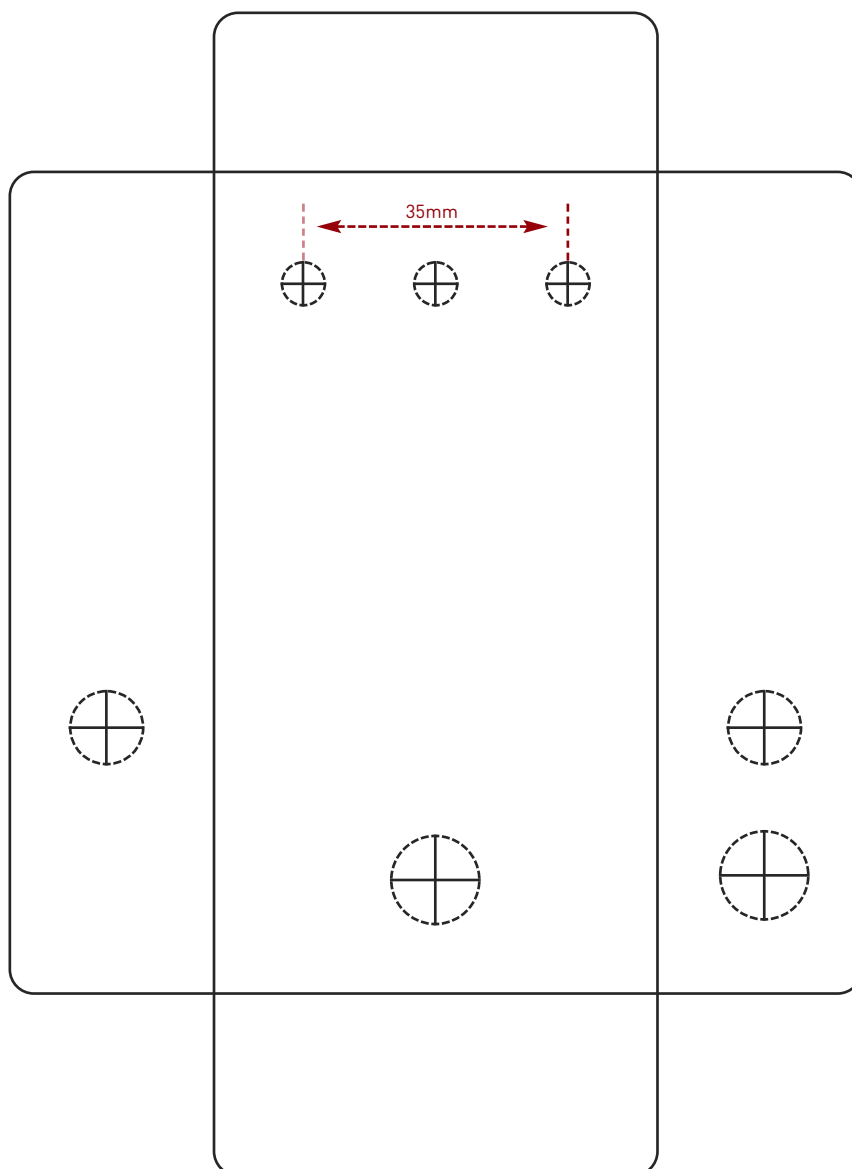
**Hammond 1590B - 60 x 111 x 31mm**

Drill sizes listed are minimum.

It's a good idea to add 1mm to anything mounted on the PCB that'll poke through the front of the enclosure.

Drill sizes:

Pots	7mm
Jacks	10mm
Footswitch	12mm
DC Socket	12mm
Toggle switches	6mm
Rotary switches	10mm



This template is a rough guide only. You should ensure correct marking of your enclosure before drilling. You use this template at your own risk.

Pedal Parts Ltd can accept no responsibility for incorrect drilling of enclosures.

FuzzDog.co.uk