

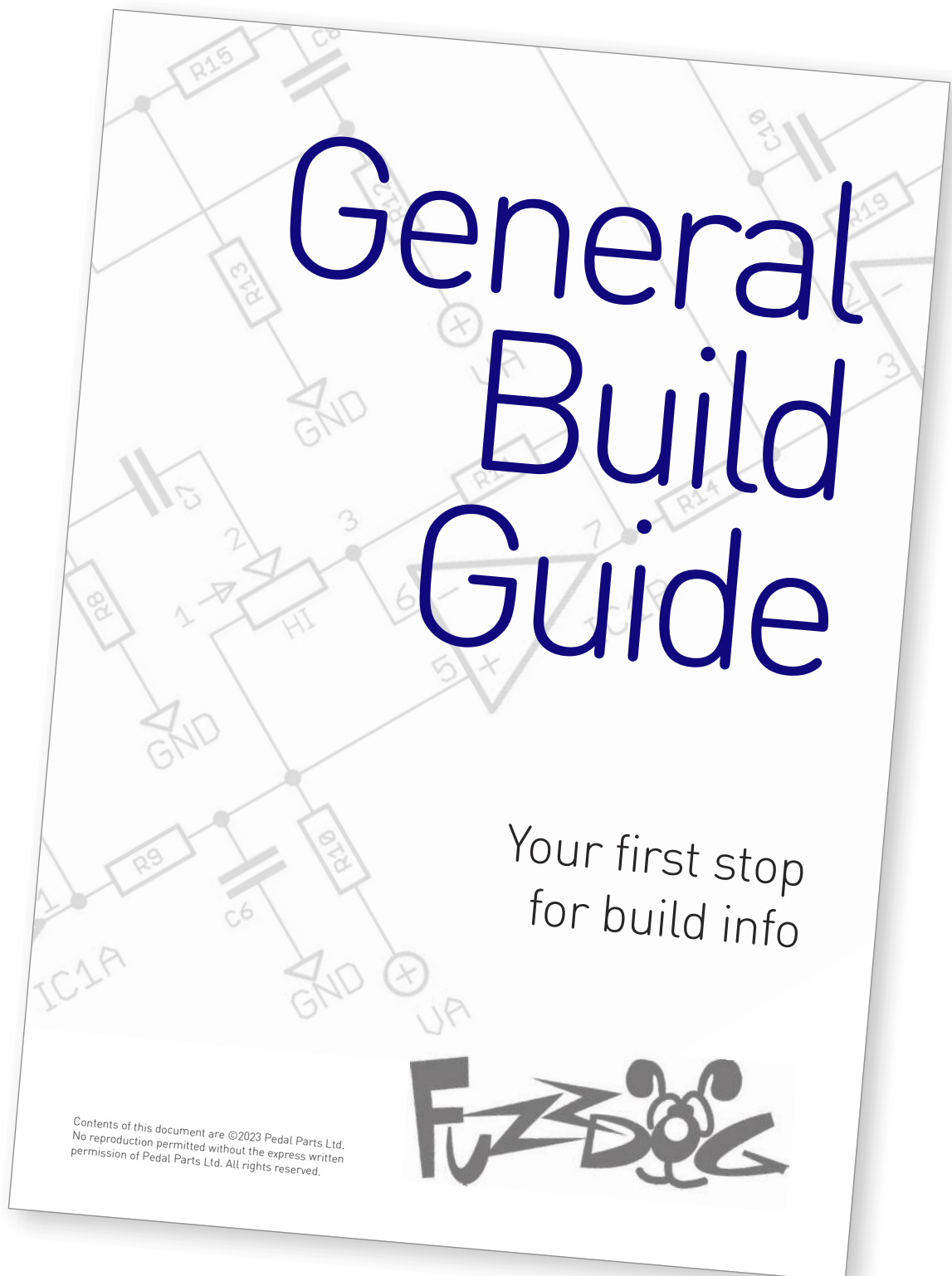
Deceased Dobbin

Screamer-based
chug-sweetener

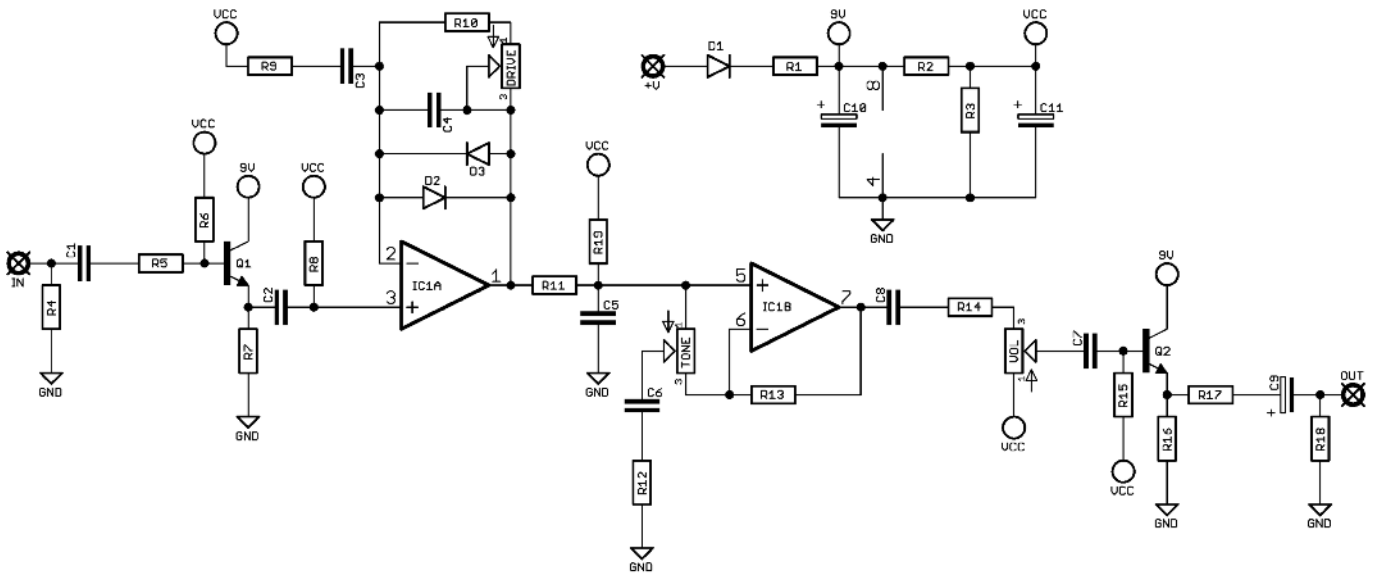


Before you dig in, ensure you download and read the **General Build Guide**.

It contains all the information you need for a successful outcome.



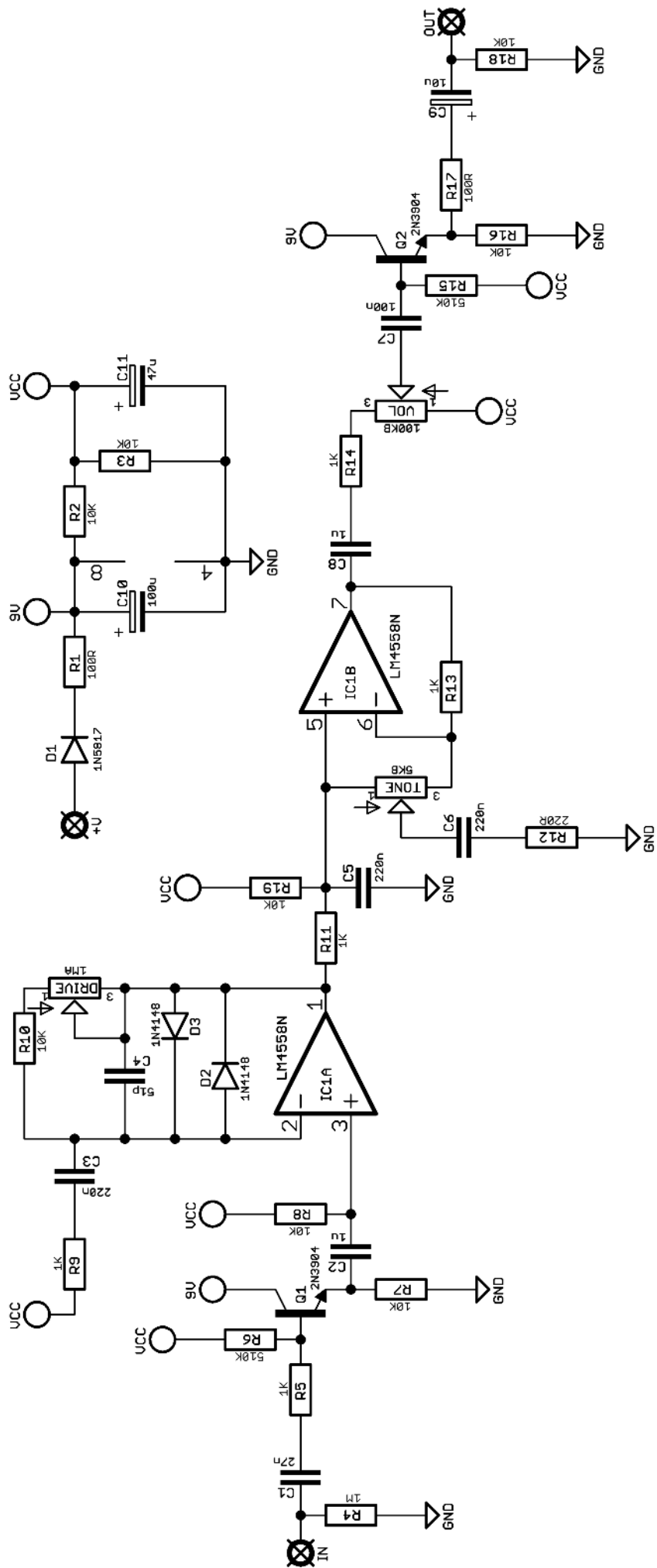
Schematic + BOM

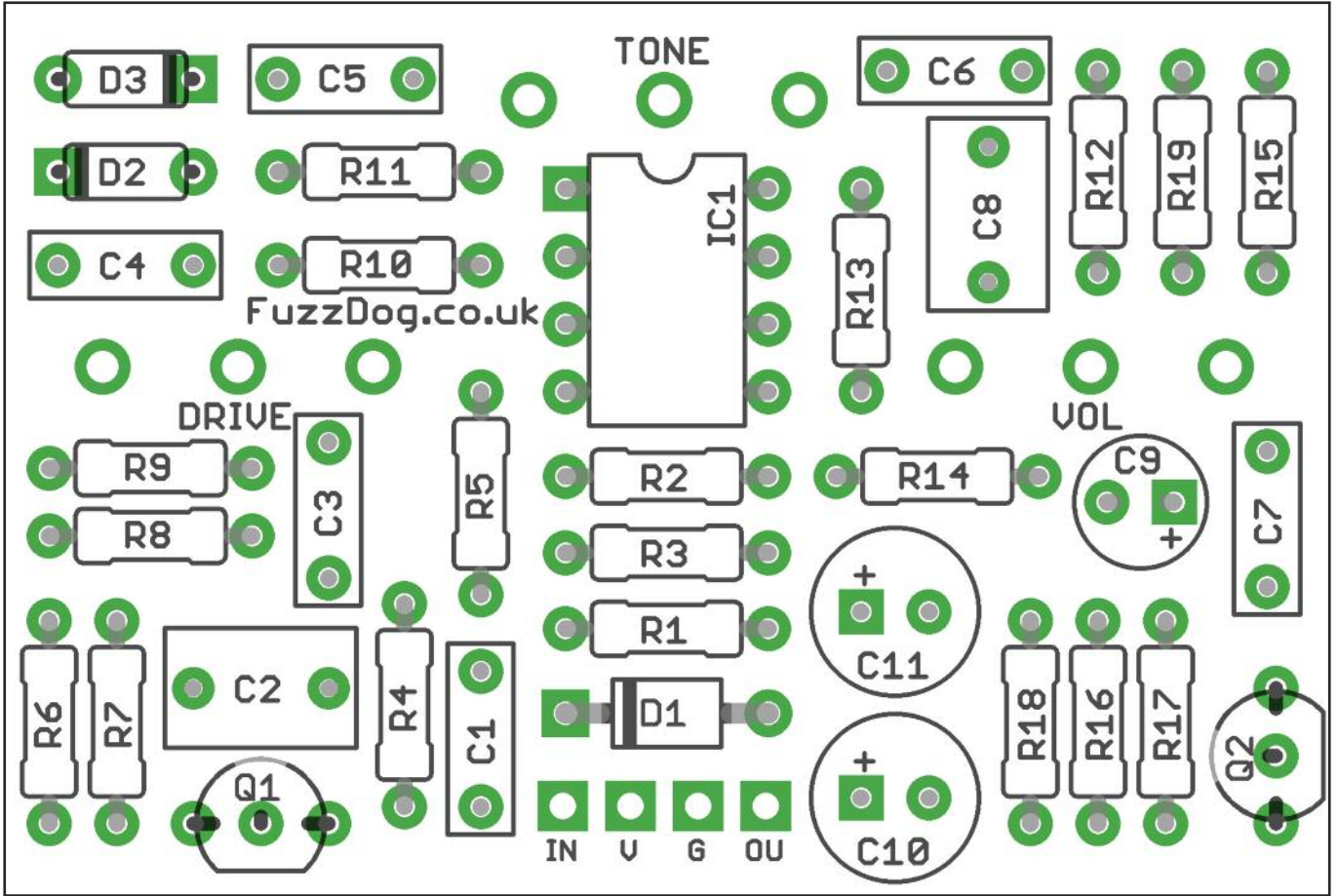


R1	100R
R2	10K
R3	10K
R4	1M
R5	1K
R6	510K
R7	10K
R8	10K
R9	1K
R10	10K
R11	1K
R12	220R
R13	1K
R14	1K
R15	510K
R16	10K
R17	100R
R18	10K
R19	10K

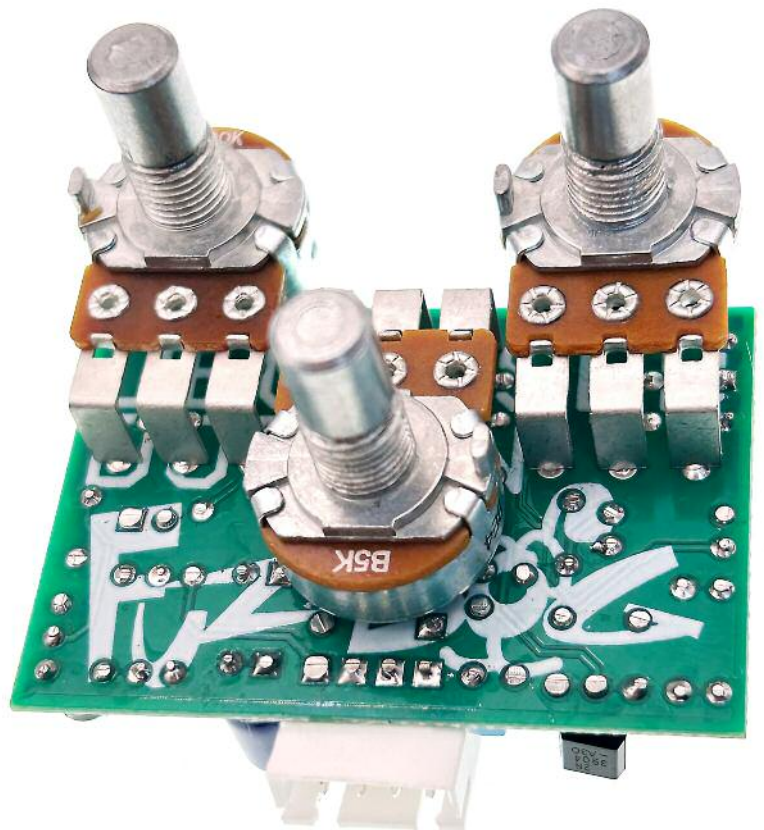
C1	27n
C2	1u
C3	220n
C4	51p*
C5	220n
C6	220n
C7	100n
C8	1u
C9	10u elec
C10	100u elec
C11	47u elec

D1	1N5817
D2-3	1N4148
Q1-2	2N3904
IC1	4558
DRIVE	1MA
TONE	5KB
VOL	100KB





Snap the small metal tags off the pots so they can be mounted flush in the box.



Drilling template

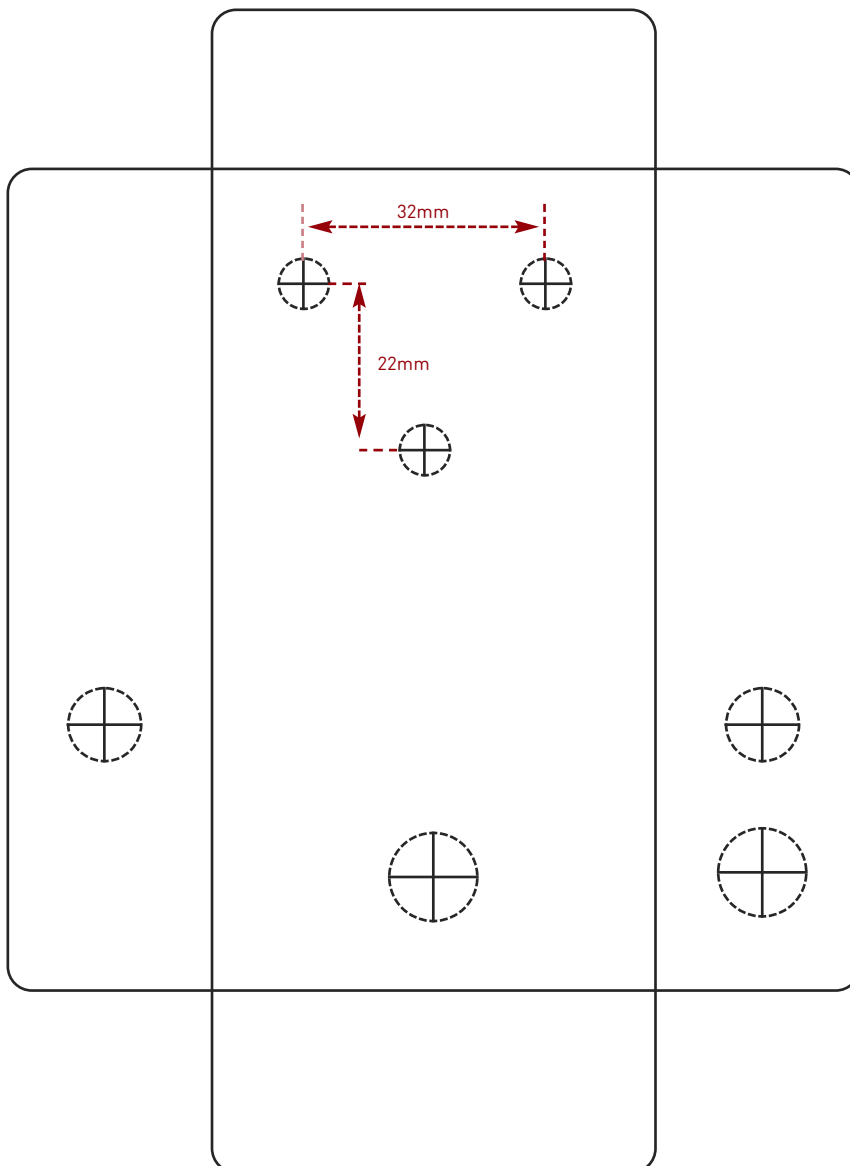
Hammond 1590B - 60 x 111 x 31mm

Drill sizes listed are minimum.

It's a good idea to add 1mm to anything mounted on the PCB that'll poke through the front of the enclosure.

Drill sizes:

Pots	7mm
Jacks	10mm
Footswitch	12mm
DC Socket	12mm
Toggle switches	6mm
Rotary switches	10mm



This template is a rough guide only. You should ensure correct marking of your enclosure before drilling. You use this template at your own risk.

Pedal Parts Ltd can accept no responsibility for incorrect drilling of enclosures.

FuzzDog.co.uk