



Dark Octave Destroyer

Absolutely uncontrollable
noisy insanity in a box

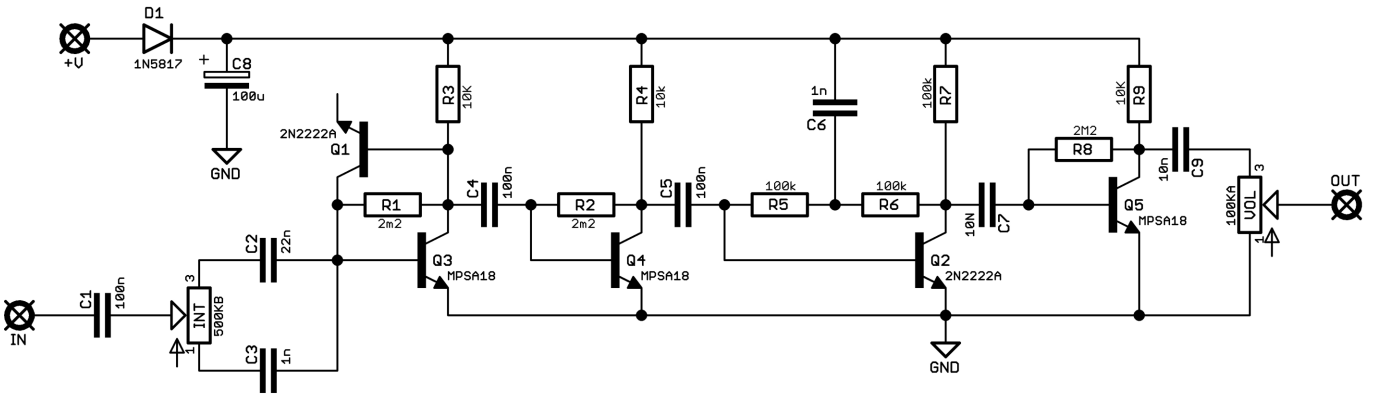


Before you dig in, ensure you download and read the **General Build Guide**.

It contains all the information you need for a successful outcome.



Schematic + BOM

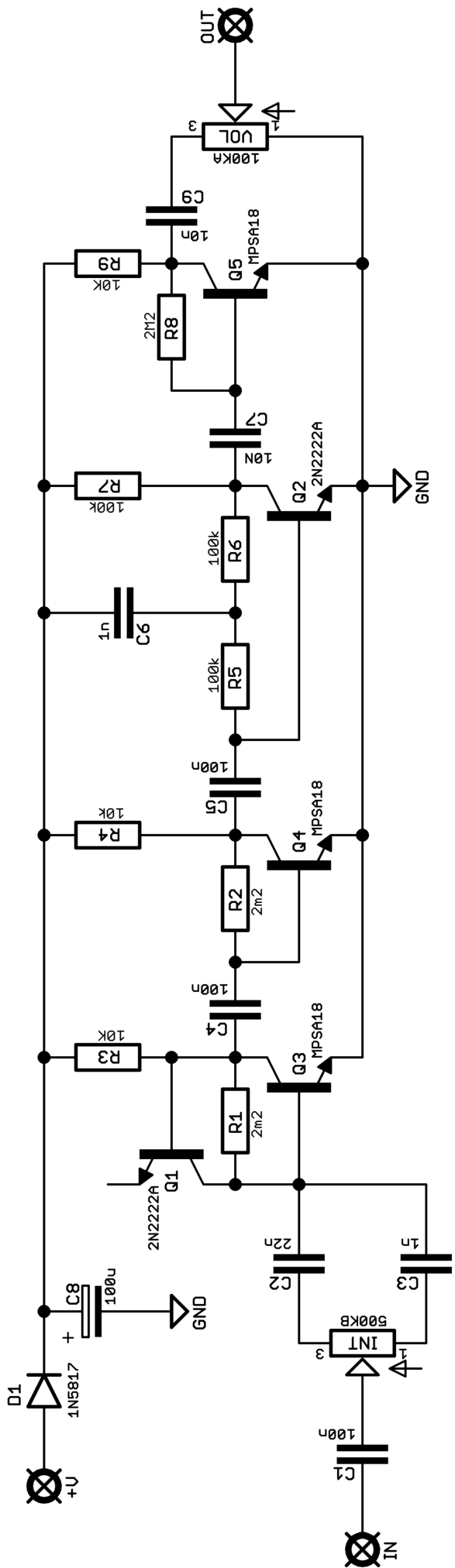


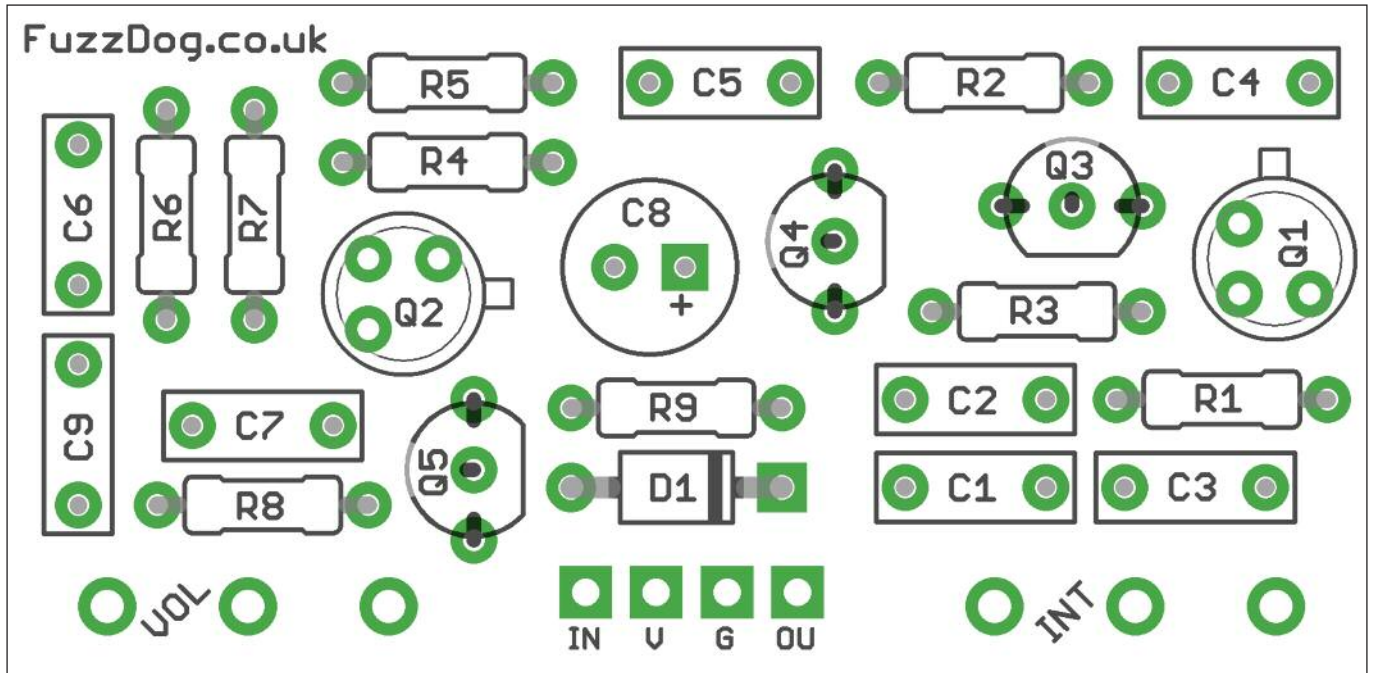
R1	2M2	C1	100n	D1	1N5817
R2	2M2	C2	22n		
R3	10K	C3	1n	Q1-2	2N2222A
R4	10K	C4	100n	Q3-5	MPSA18
R5	100K	C5	100n		
R6	100K	C6	1n	INT	500KB*
R7	100K	C7	10n	VOL	100KA
R8	2M2	C8	100u elec		
R9	10K	C9	10n		

*We forgot to change the label on the input pot.
The original is 'TEXTURE'.

BE PREPARED

This thing will squeal, howl and generally make a whole mess of things.

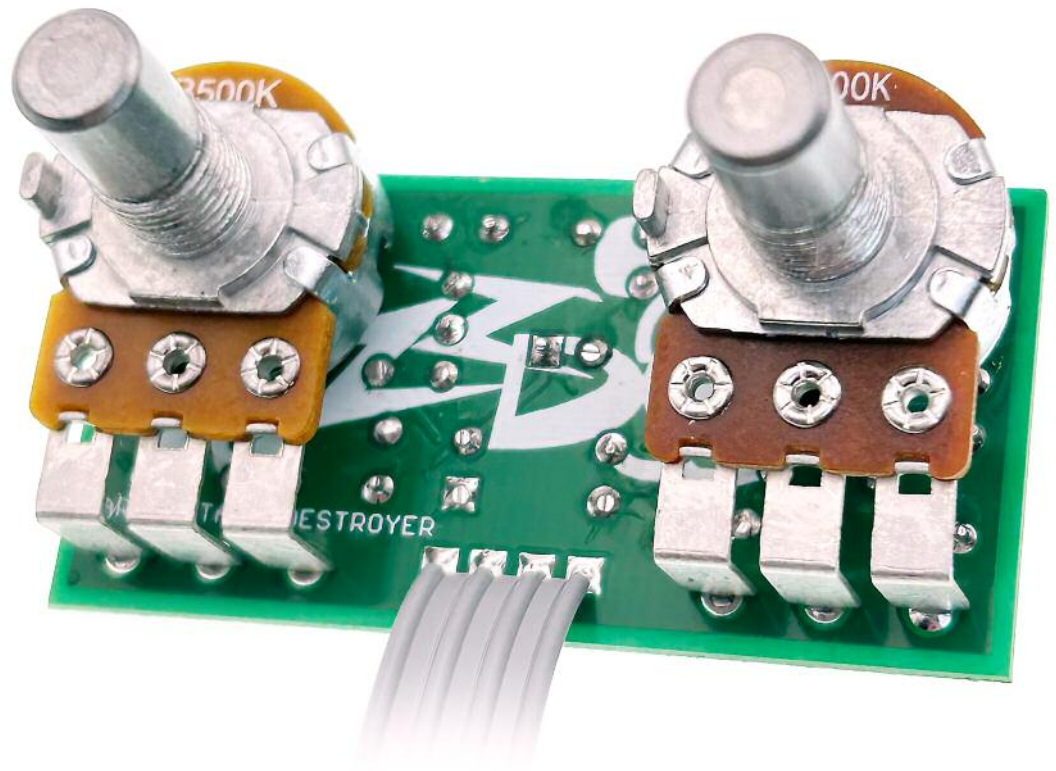




Snap the small metal tag off the pots so they can be mounted flush in the box.

You should solder all other board-mounted components before you solder the pots.

Once they're in place you'll have no access to much of the board.



Drilling template

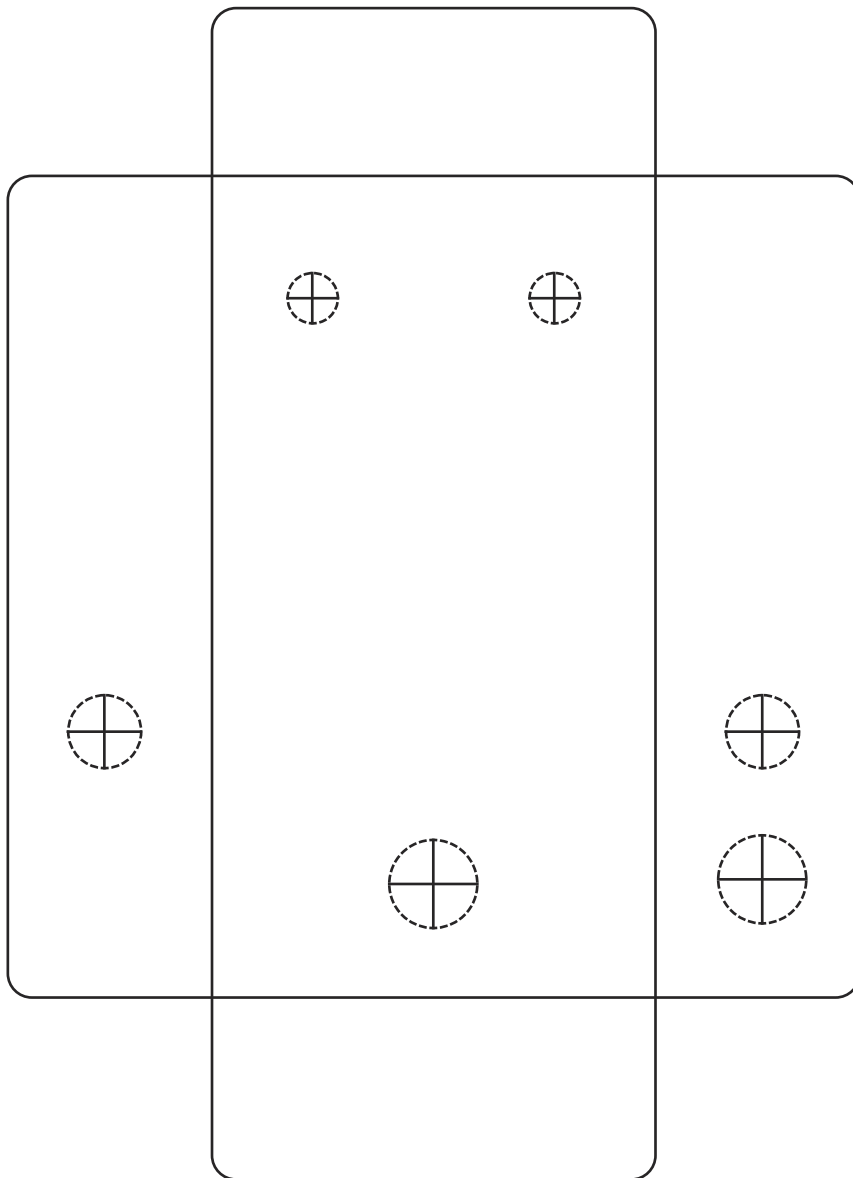
Hammond 1590B - 60 x 111 x 31mm

Drill sizes listed are minimum.

It's a good idea to add 1mm to anything mounted on the PCB that'll poke through the front of the enclosure.

Drill sizes:

Pots	7mm
Jacks	10mm
Footswitch	12mm
DC Socket	12mm



This template is a rough guide only. You should ensure correct marking of your enclosure before drilling. You use this template at your own risk.

Pedal Parts Ltd can accept no responsibility for incorrect drilling of enclosures.

FuzzDog.co.uk