

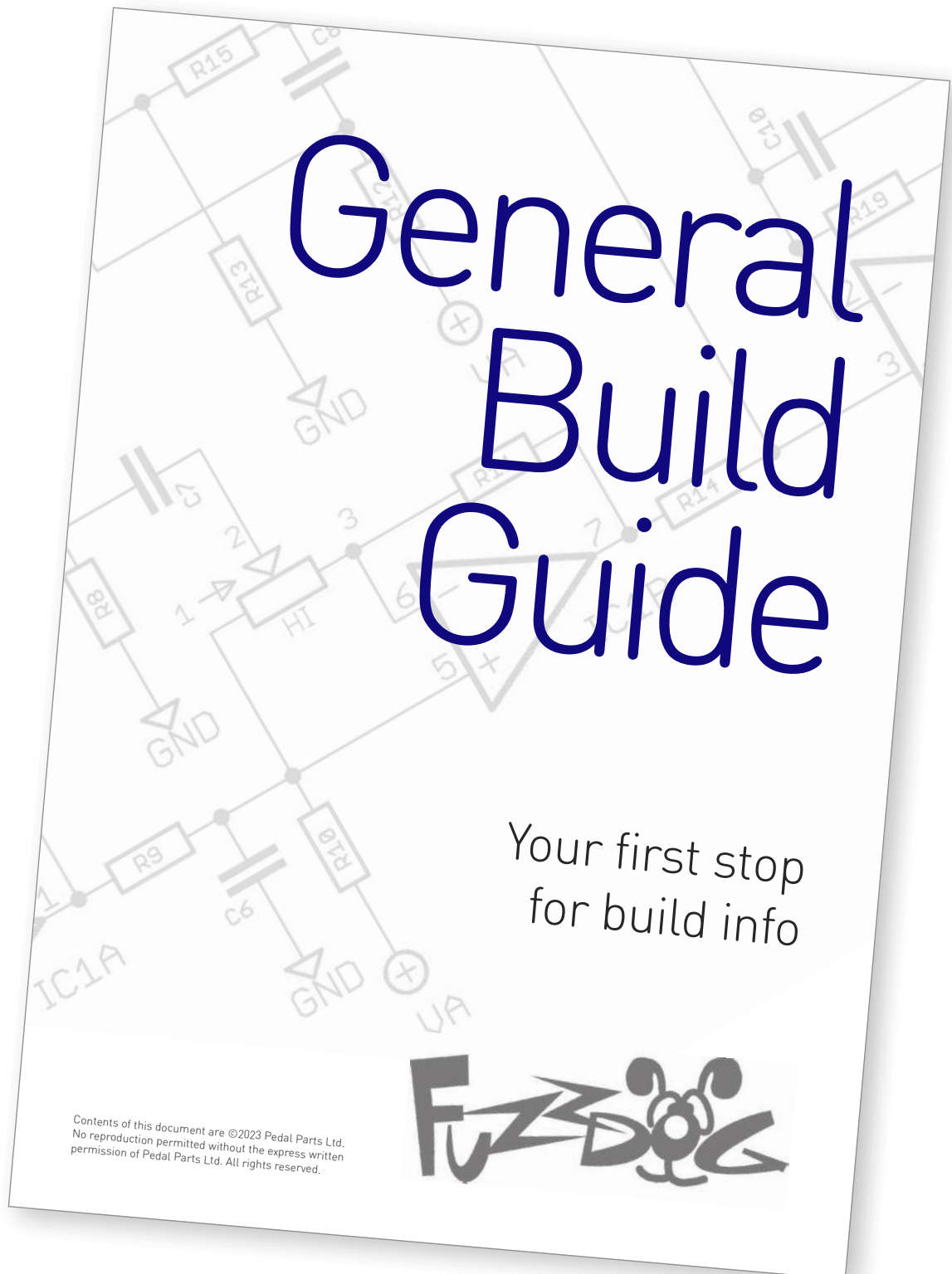
Citric Magic

Versatile and tweakable
boost and drive

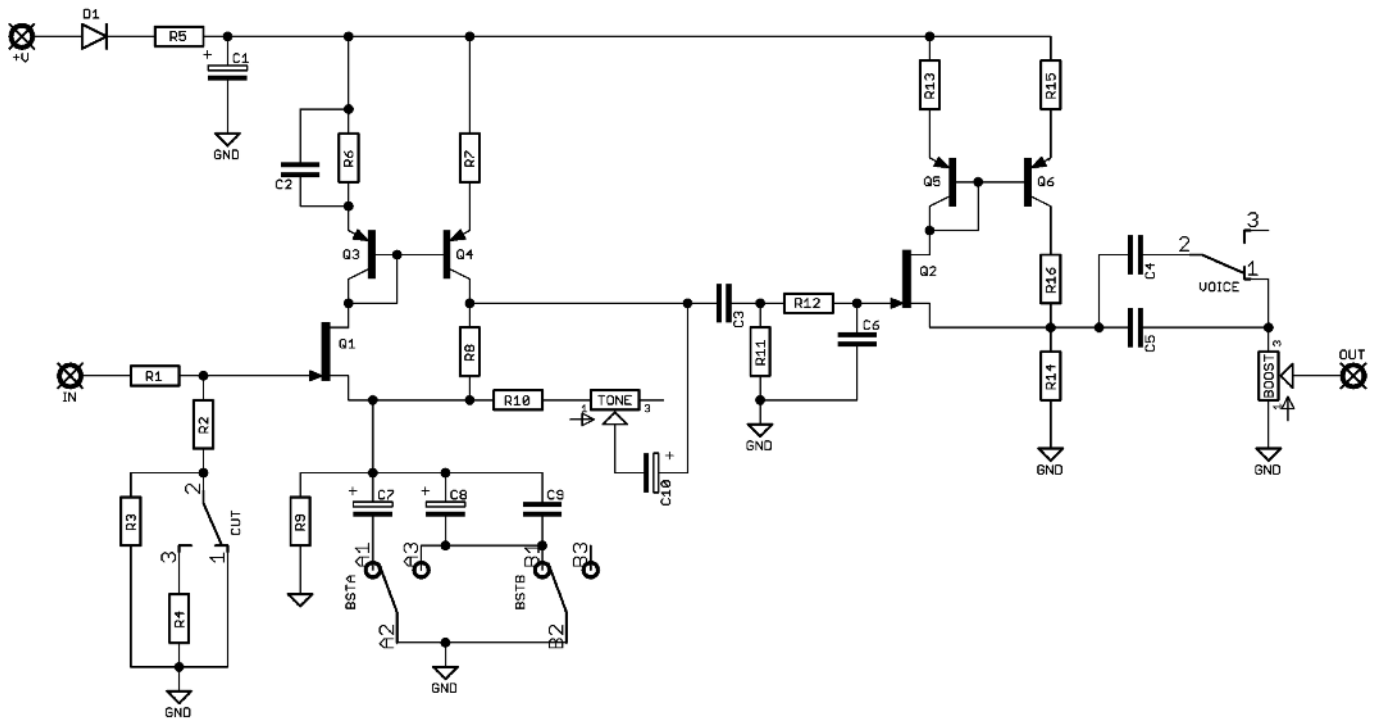


Before you dig in, ensure you download and read the **General Build Guide**.

It contains all the information you need for a successful outcome.

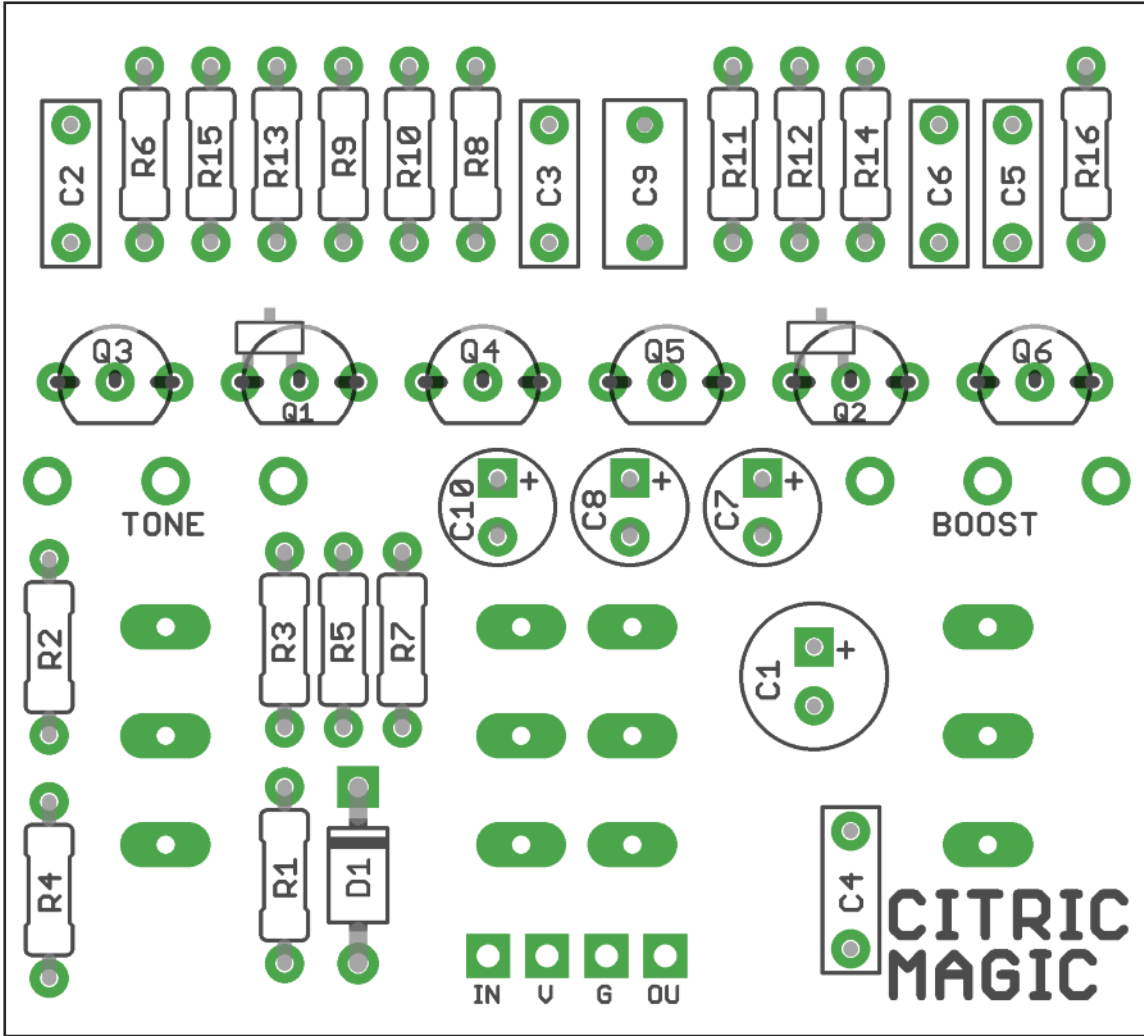


Schematic + BOM



R1	10K	C1	100u elec	D1	1N5817
R2	10K	C2	2n7	Q1-2	2N5845*
R3	1M	C3	220n	Q3-6	2N3906
R4	100K	C4	100n	BOOST	25KB
R5	100R	C5	22n	TONE	5KB
R6	1K5	C6	2n7	BST	DPDT ON-OFF-ON
R7	100R	C7	10u elec	CUT	SPDT ON-ON
R8	1K5	C8	1u elec	VOICE	SPDT ON-ON
R9	1K	C9	470n		
R10	100R	C10	2u2 elec		
R11	1M				
R12	10K				
R13	1K				
R14	1K				
R15	100R				
R16	1K5				

*There's spots on the PCB for both through-hole and SMT parts.



Snap the small metal tags off the pots so they can be mounted flush in the box.



Drilling template

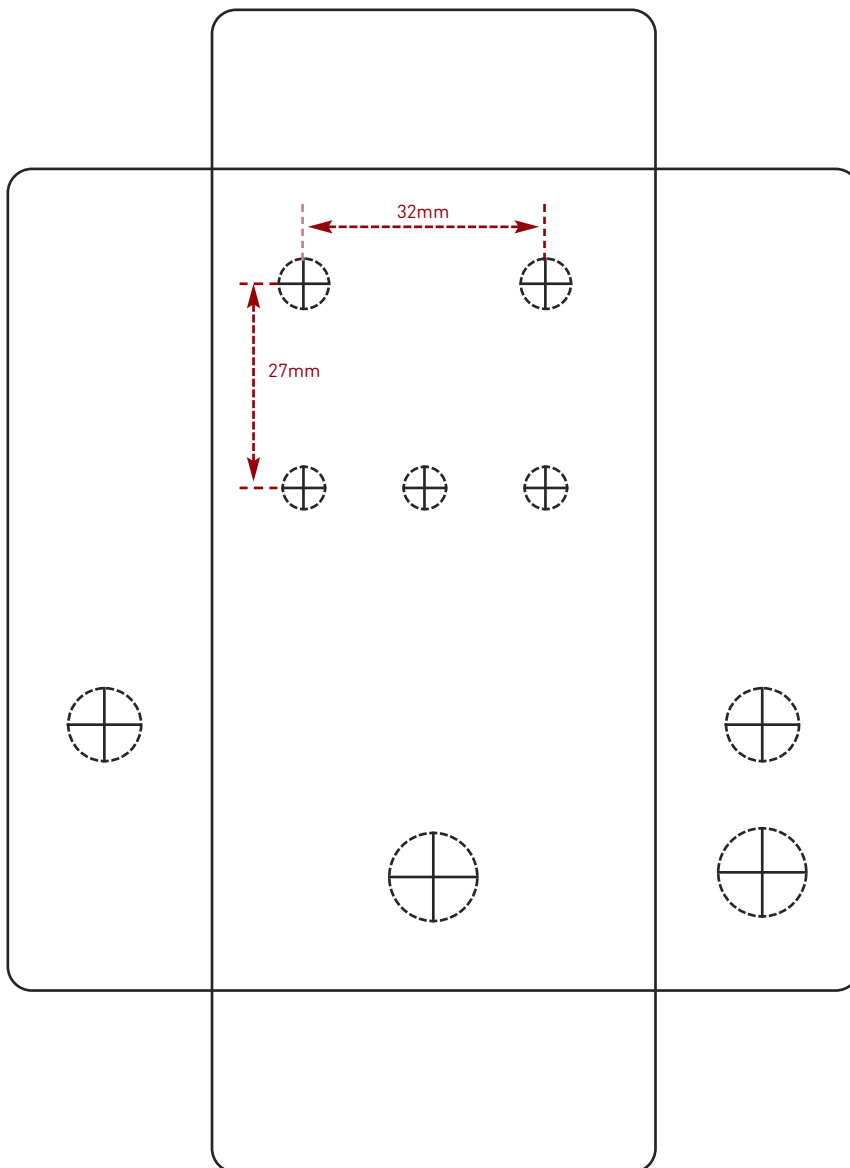
Hammond 1590B - 60 x 111 x 31mm

Drill sizes listed are minimum.

It's a good idea to add 1mm to anything mounted on the PCB that'll poke through the front of the enclosure.

Drill sizes:

Pots	7mm
Jacks	10mm
Footswitch	12mm
DC Socket	12mm
Toggle switches	6mm
Rotary switches	10mm



This template is a rough guide only. You should ensure correct marking of your enclosure before drilling. You use this template at your own risk.

Pedal Parts Ltd can accept no responsibility for incorrect drilling of enclosures.

FuzzDog.co.uk