

Chilly Biscuit +

Dynamic, pick-responsive
distortion loveliness

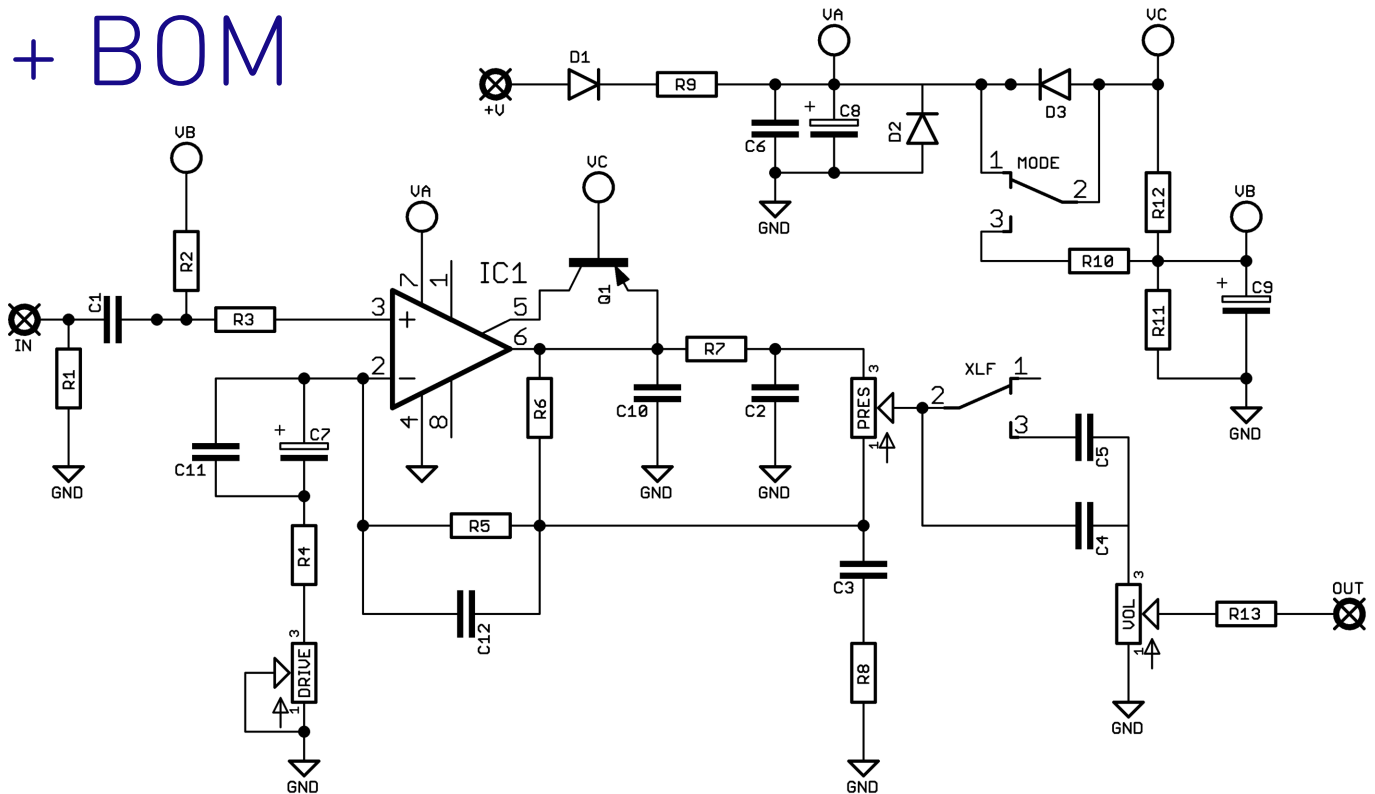


Before you dig in, ensure you download and read the **General Build Guide**.

It contains all the information you need for a successful outcome.



Schematic + BOM



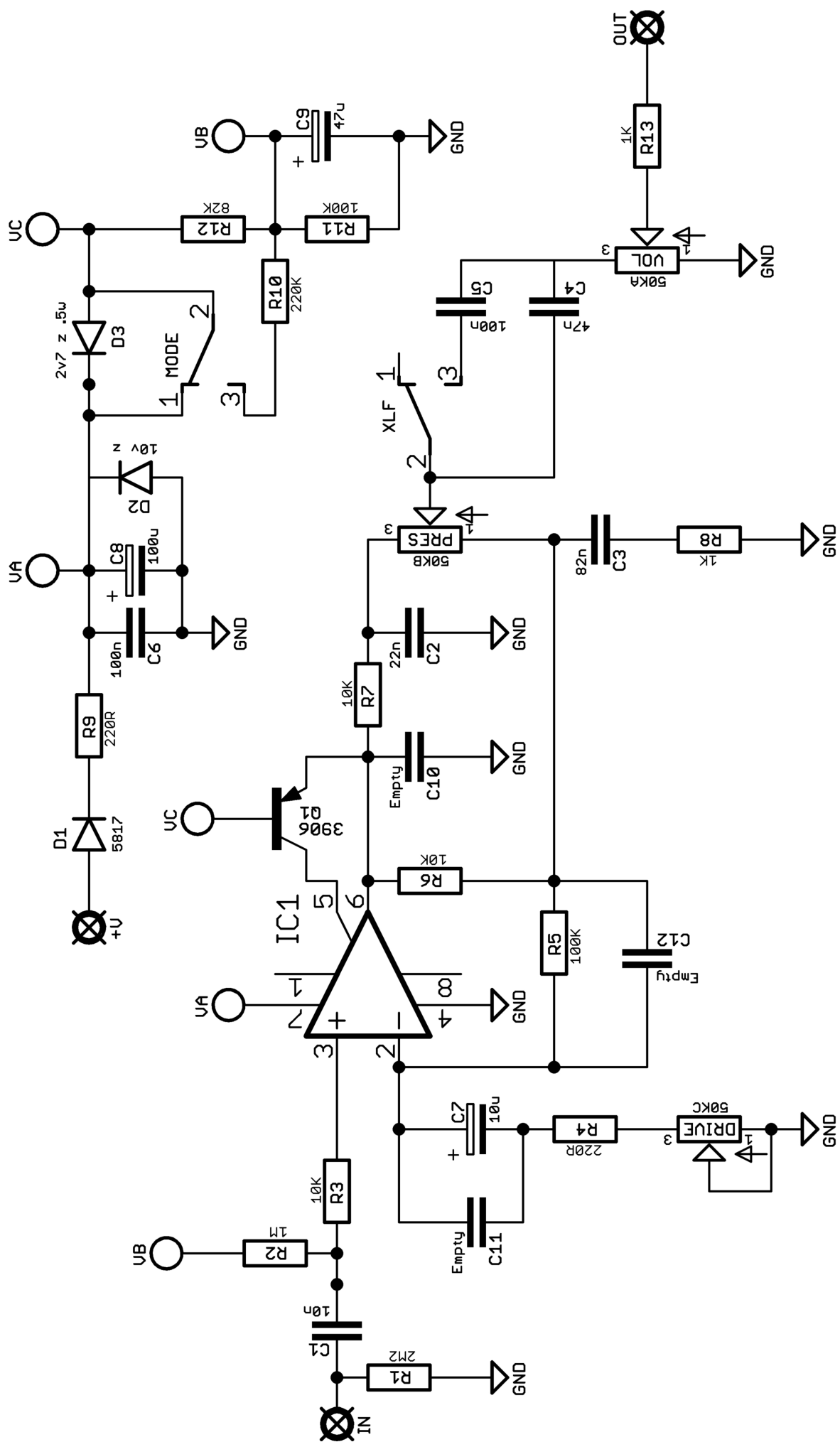
R1 2M2
 R2 1M
 R3 10K
 R4 220R **[2K2]**
 R5 100K
 R6 10K
 R7 10K
 R8 1K
 R9 220R
 R10 220K
 R11 100K
 R12 82K
 R13 1K

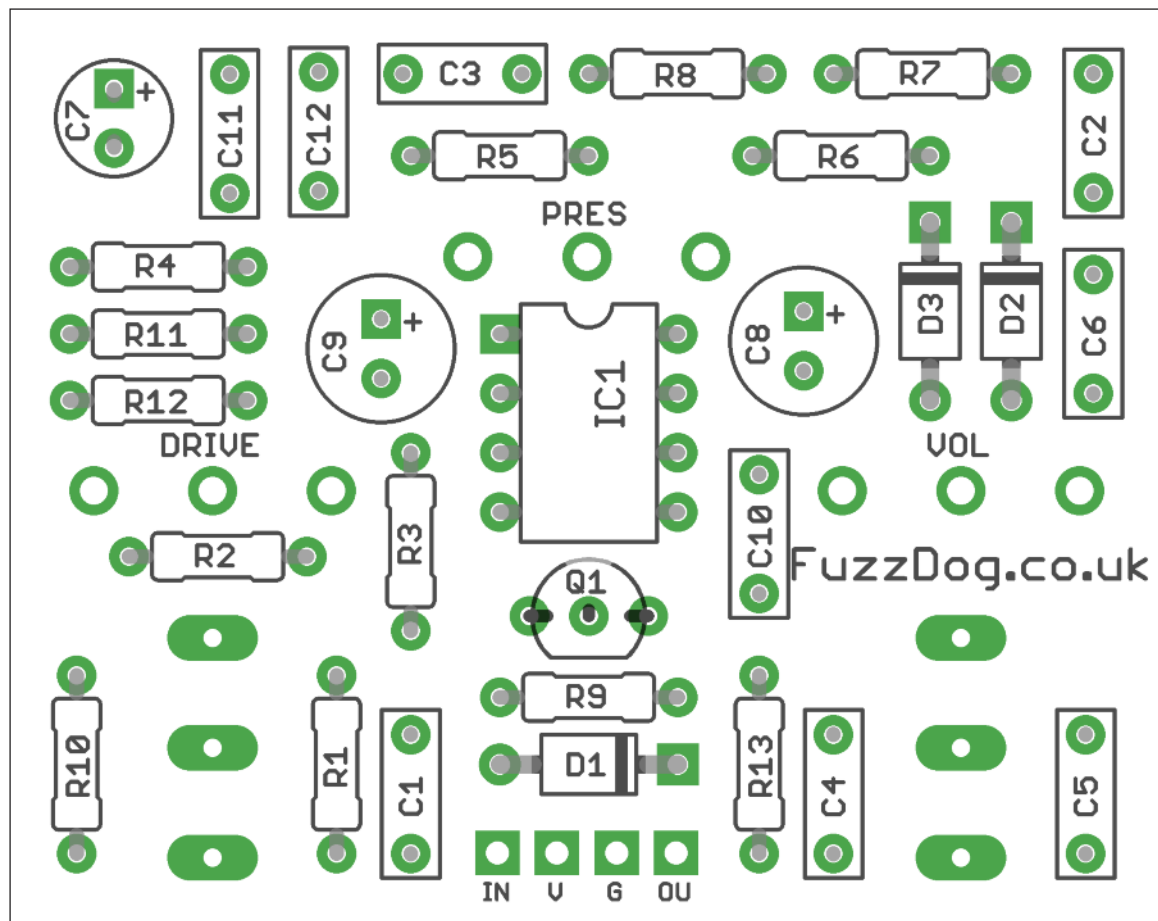
C1 10n
 C2 22n
 C3 82n **[39n]**
 C4 47n
 C5 100n
 C6 100n
 C7 10u elec **[Empty]**
 C8 100u elec
 C9 47u elec
 C10 Empty **[10n]**
 C11 Empty **[100n]**
 C12 Empty **[220p]**

D1 1N5817
 D2 10V 1.3W Zener*
 D3 2V7 500mW Zener
 IC1 TL071
 Q1 2N3906
 GAIN 50KC
 TONE 50KB
 VOL 50KA
 MODE SPDT ON-ON
 XLF SPDT ON-ON

Values in blue are MadBean's mods for less gain and bass.

*D2 is over-voltage protection. If you want to run this at 12-18V, leave this out.

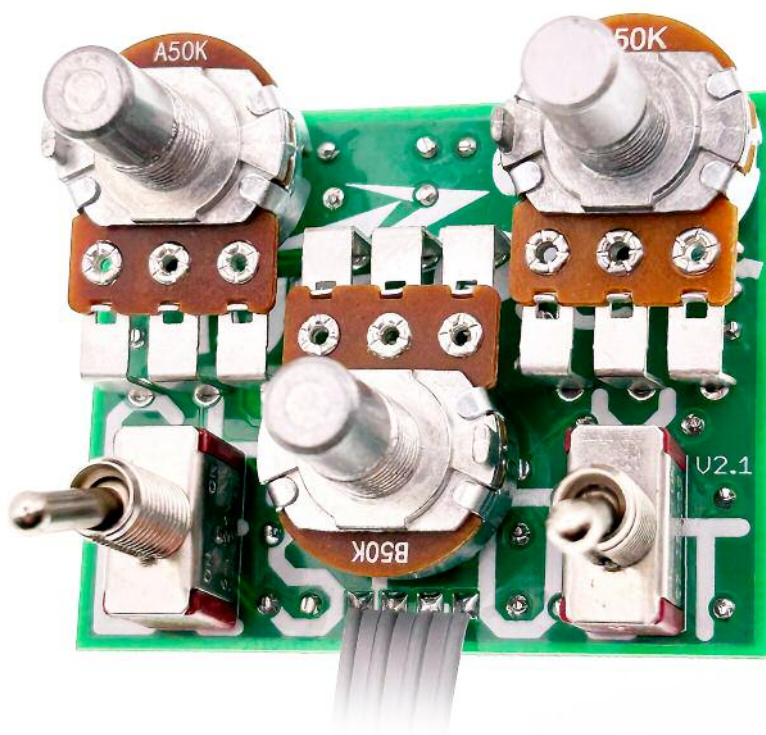




Snap the small metal tags off the pots so they can be mounted flush in the box.

You should solder all other board-mounted components before you solder the pots.

Once they're in place you'll have no access to much of the board.



Drilling template

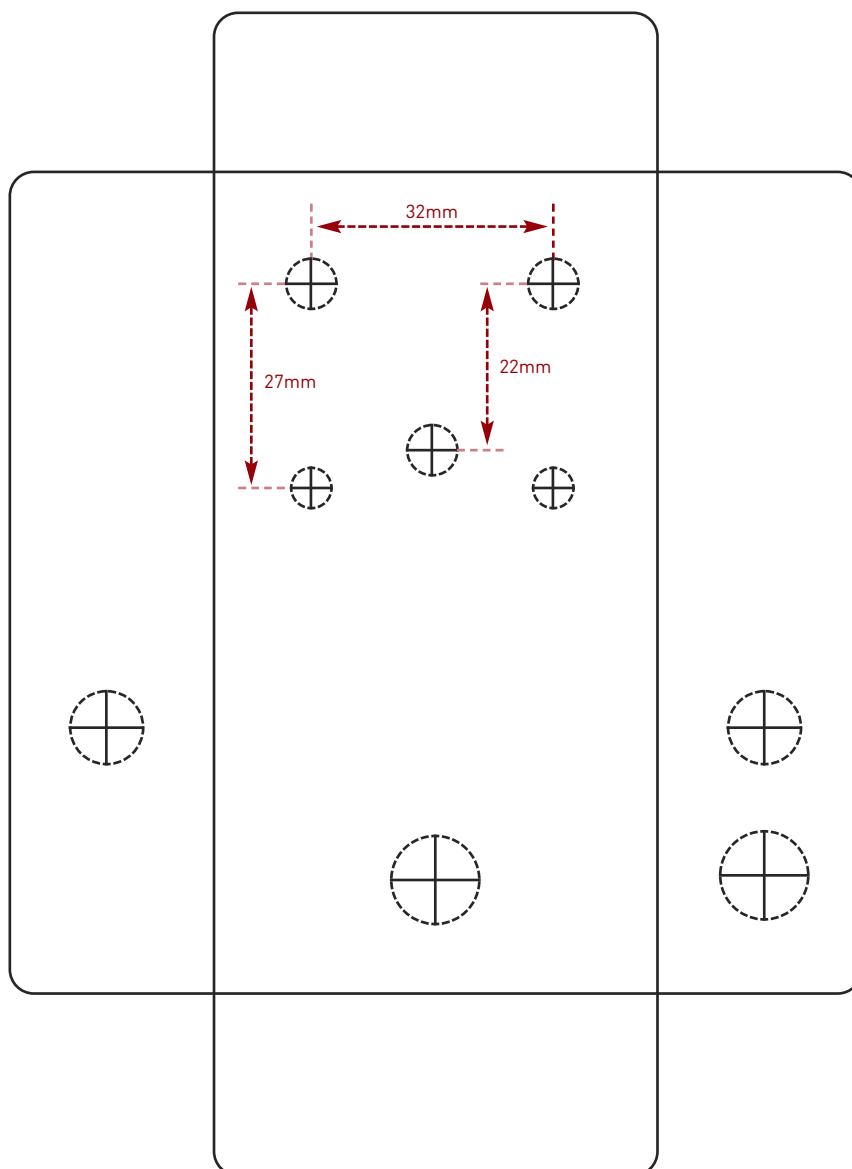
Hammond 1590B - 60 x 111 x 31mm

Drill sizes listed are minimum.

It's a good idea to add 1mm to anything mounted on the PCB that'll poke through the front of the enclosure.

Drill sizes:

Pots	7mm
Jacks	10mm
Footswitch	12mm
DC Socket	12mm
Toggle switches	6mm
Rotary switches	10mm



This template is a rough guide only. You should ensure correct marking of your enclosure before drilling. You use this template at your own risk.

Pedal Parts Ltd can accept no responsibility for incorrect drilling of enclosures.

FuzzDog.co.uk