

Broon Sauce

Perfect drive to pair with
the Stinky Cheese



Before you dig in, ensure you download and read the **General Build Guide**.

It contains all the information you need for a successful outcome.

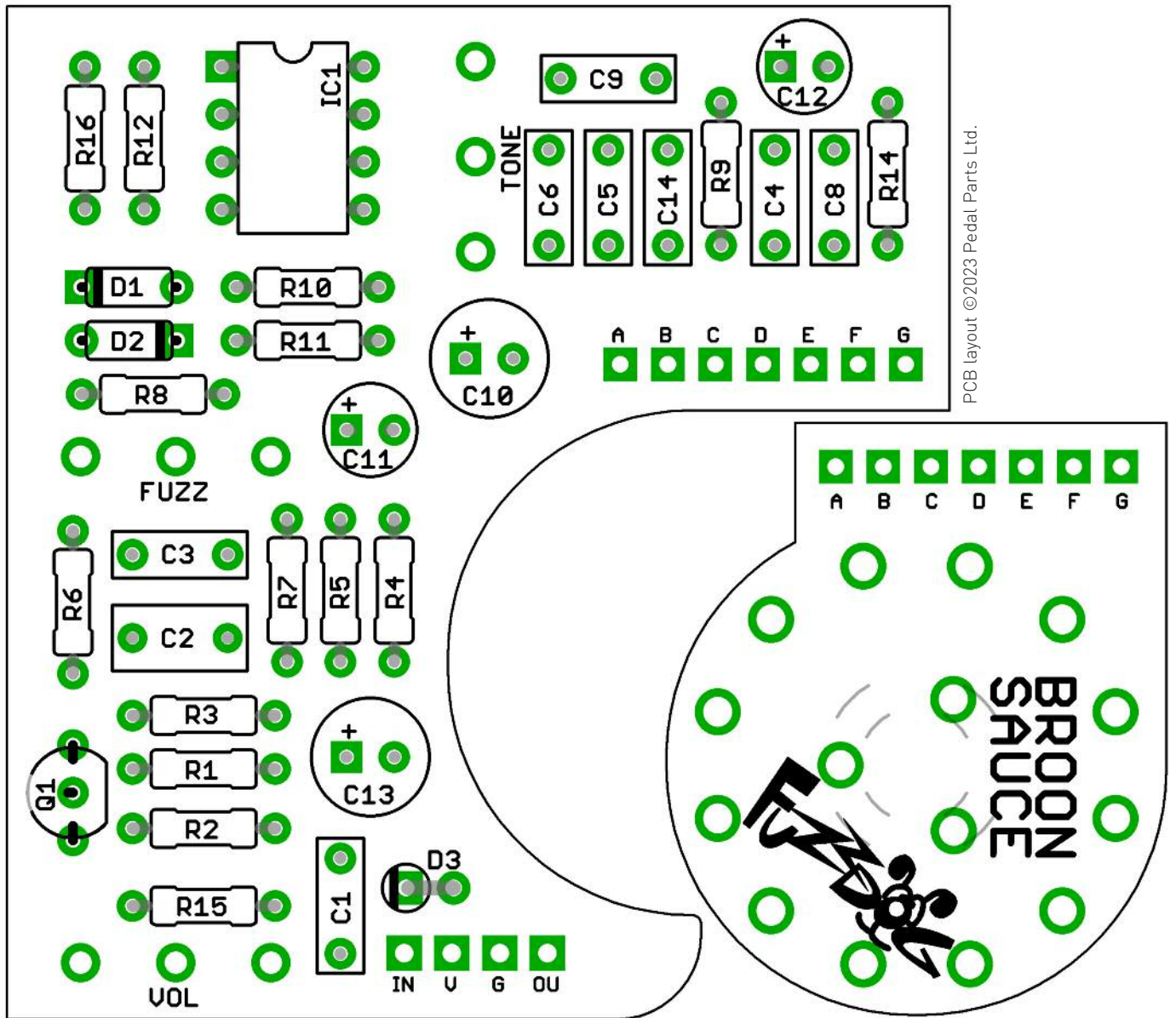


Schematic + BOM

SCHEMATIC TO FOLLOW

R1	1M	C1	33n	D1-2	1N4148
R2	1M	C2	470n	D3	1N5817
R3	3K9	C3	33n		
R4	22K	C4	33n	Q1	BC549C*
R5	22K	C5	220n	IC1	TL072
R6	220R	C6	22n		
R7	1K	C8	220n	DRIVE	25KB
R8	Jumper	C9	33n	TONE	100KB
R9	3K9	C10	47u elec	VOL	10KA
R10	3K9	C11	2u2 elec		
R11	1M	C12	2u2 elec	SW1	ROTARY 3P4T
R12	3K9	C13	47u elec		
R14	220R	C14	33n		
R15	2M2				
R16	22K				

*Other medium gain BJTs can be used, but note the pinout.
BC549 is reversed to most others such as 2N5088 or 2N3904.



As you can see on the cover image, the rotary switch is mounted on a separate daughterboard. This has been designed to mount with standard header pins (7-way).

With the pins fully inserted so only the plastic spacer is separating the two PCBs, the rotary switch will sit at exactly the same height as the pots, ensuring a nice fit into the enclosure.



Drilling template

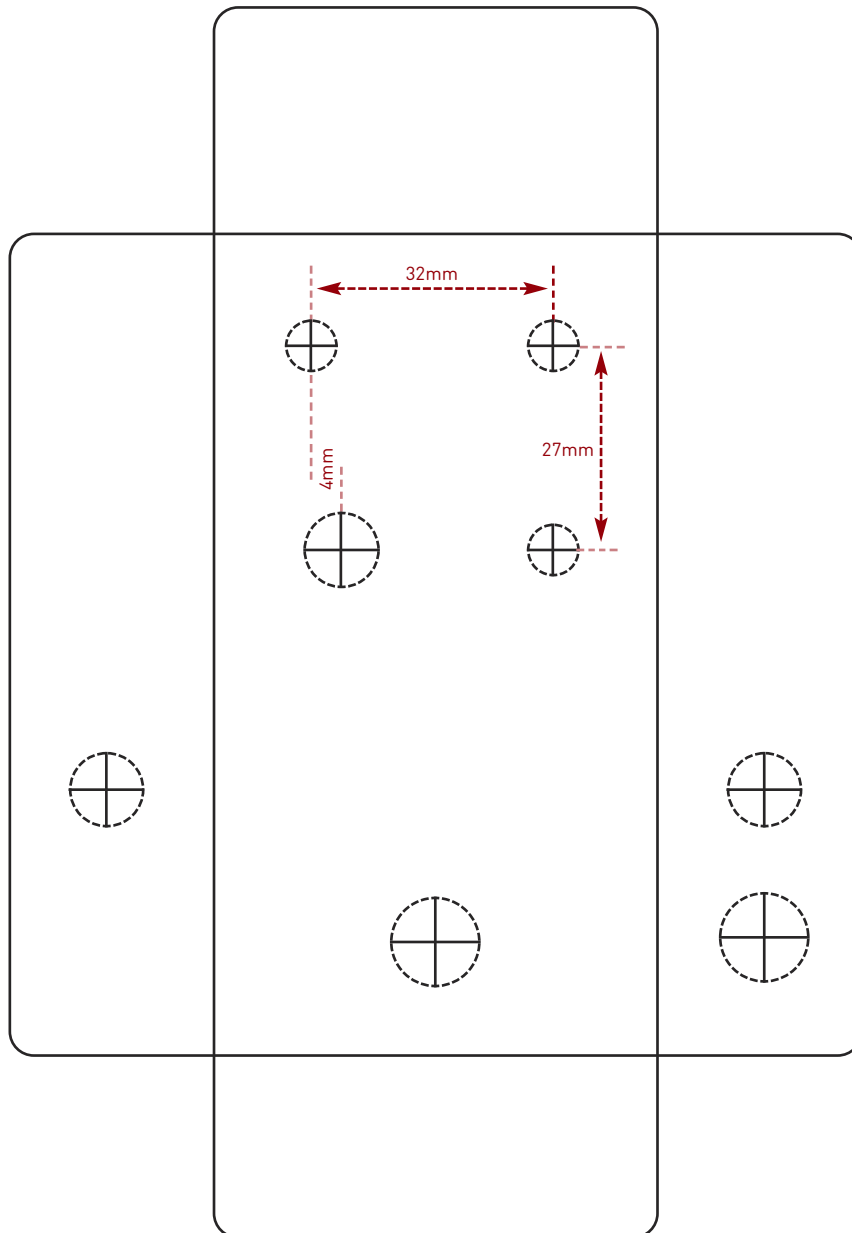
Hammond 1590B - 60 x 111 x 31mm

Drill sizes listed are minimum.

It's a good idea to add 1mm to anything mounted on the PCB that'll poke through the front of the enclosure.

Drill sizes:

Pots	7mm
Jacks	10mm
Footswitch	12mm
DC Socket	12mm
Toggle switches	6mm
Rotary switches	10mm



This template is a rough guide only. You should ensure correct marking of your enclosure before drilling. You use this template at your own risk.

Pedal Parts Ltd can accept no responsibility for incorrect drilling of enclosures.

FuzzDog.co.uk