

It's a Bomber!

Explosive drive

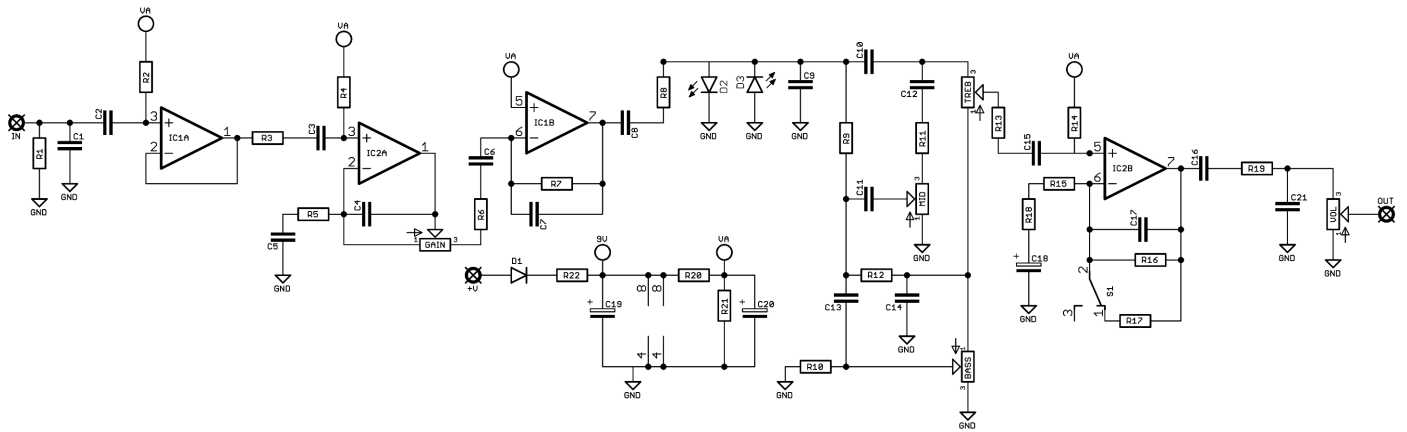


Before you dig in, ensure you download and read the **General Build Guide**.

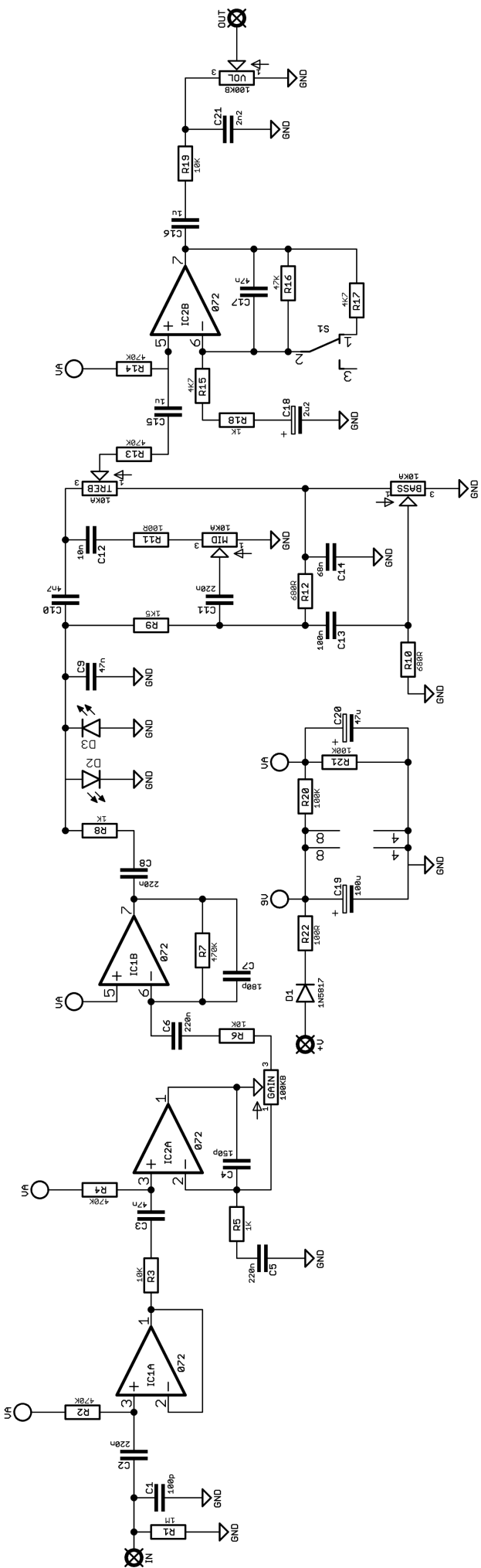
It contains all the information you need for a successful outcome.

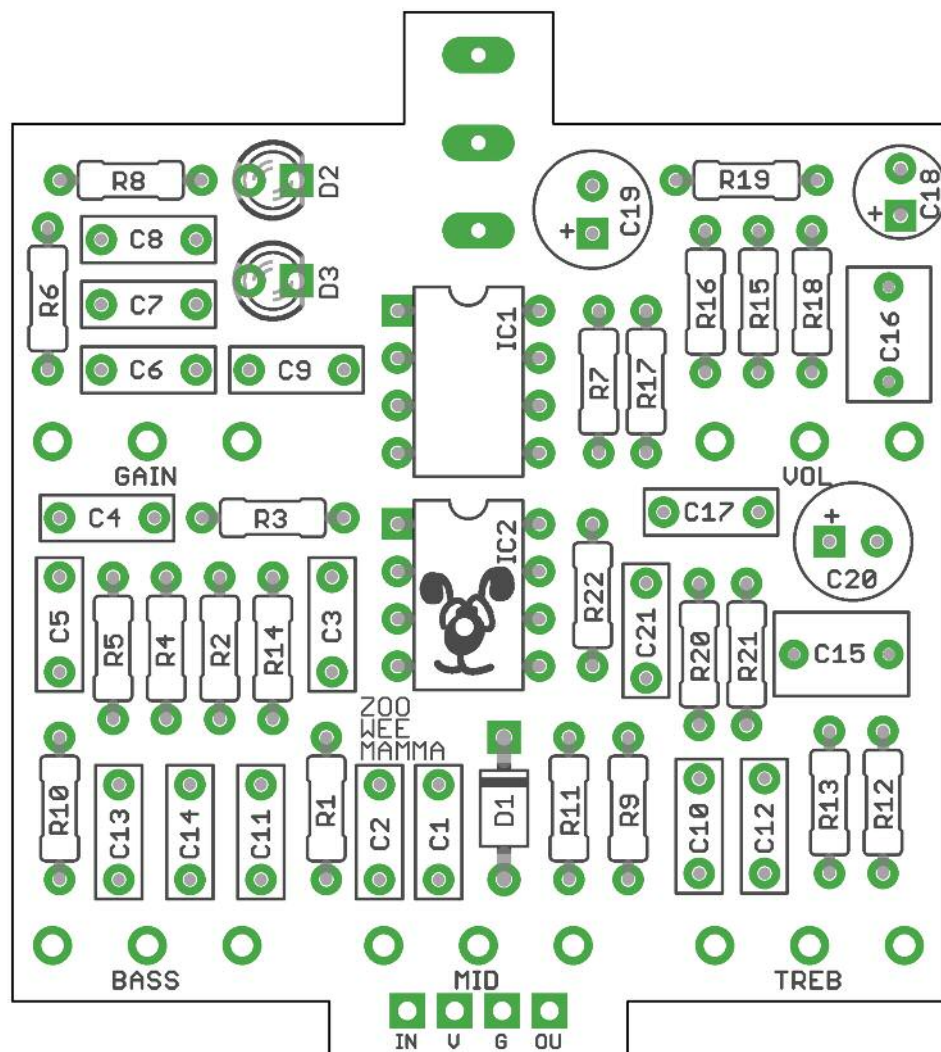


Schematic + BOM



R1	1M	C1	100p	D1	1N5817
R2	470K	C2	220n	D2-3	3mm red LEDs
R3	10K	C3	47n	IC1-2	TL072
R4	470K	C4	150p	BASS	10KA
R5	1K	C5	220n	GAIN	100KB
R6	10K	C6	220n	MID	10KA
R7	470K	C7	180p	TREB	10KA
R8	1K	C8	220n	VOL	100KB
R9	1K5	C9	47n	S1	SPDT ON-ON
R10	680R	C10	4n7		
R11	100R	C11	220n		
R12	680R	C12	10n		
R13	470K	C13	100n		
R14	470K	C14	68n		
R15	4K7	C15	1u		
R16	47K	C16	1u		
R17	4K7	C17	47n		
R18	1K	C18	2u2 elec		
R19	10K	C19	100u elec		
R20	100K	C20	47u elec		
R21	100K	C21	2n2		
R22	100R				

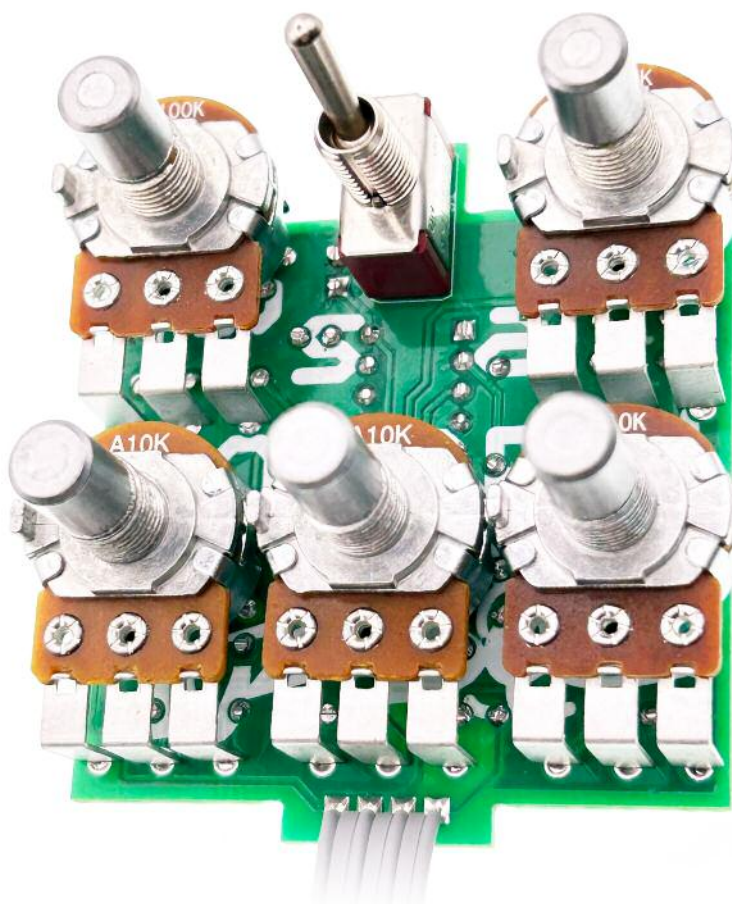




Snap the small metal tags off the pots so they can be mounted flush in the box.

You should solder all other board-mounted components before you solder the pots.

Once they're in place you'll have no access to much of the board.



Drilling template

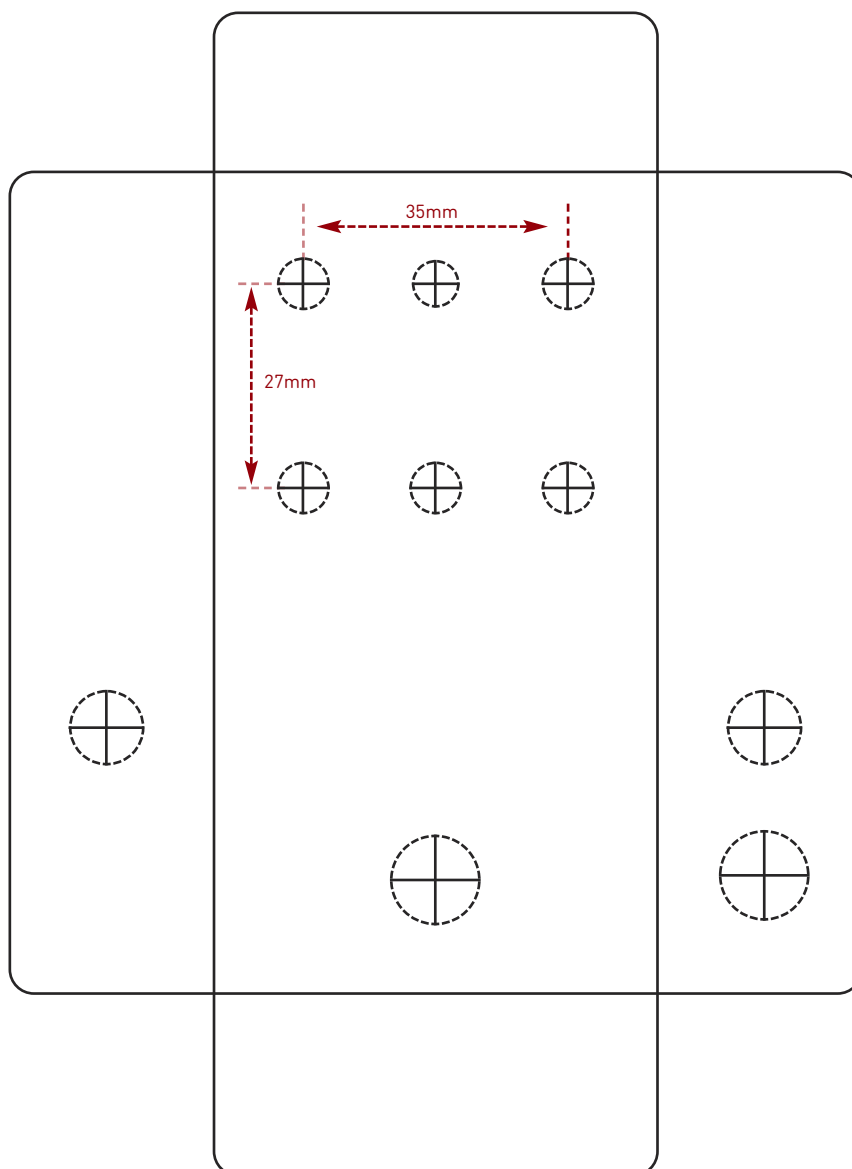
Hammond 1590B - 60 x 111 x 31mm

Drill sizes listed are minimum.

It's a good idea to add 1mm to anything mounted on the PCB that'll poke through the front of the enclosure.

Drill sizes:

Pots	7mm
Jacks	10mm
Footswitch	12mm
DC Socket	12mm
Toggle switches	6mm
Rotary switches	10mm



This template is a rough guide only. You should ensure correct marking of your enclosure before drilling. You use this template at your own risk.

Pedal Parts Ltd can accept no responsibility for incorrect drilling of enclosures.

FuzzDog.co.uk