

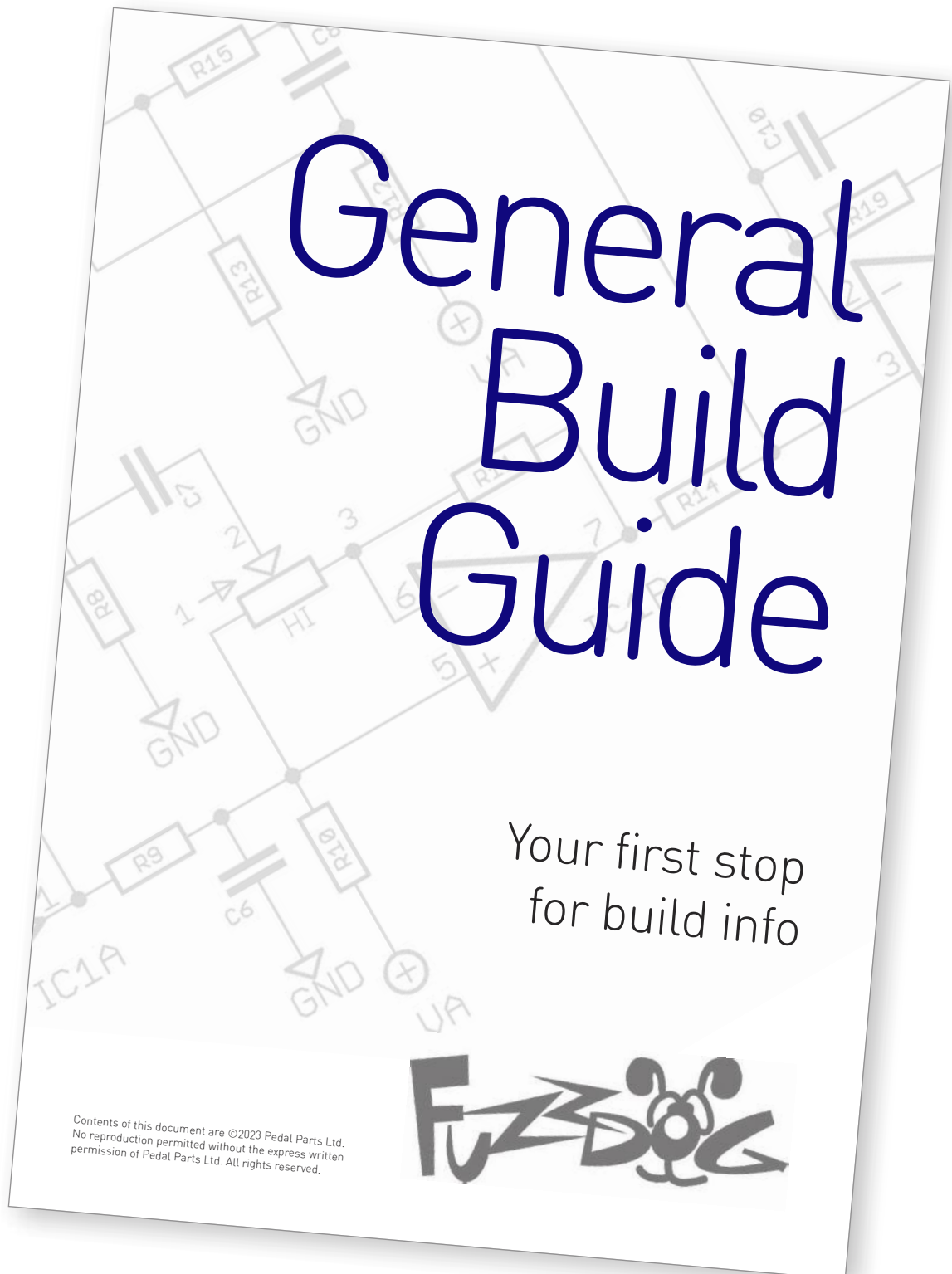
Big Hunger

Sludge Fuzz Heaven

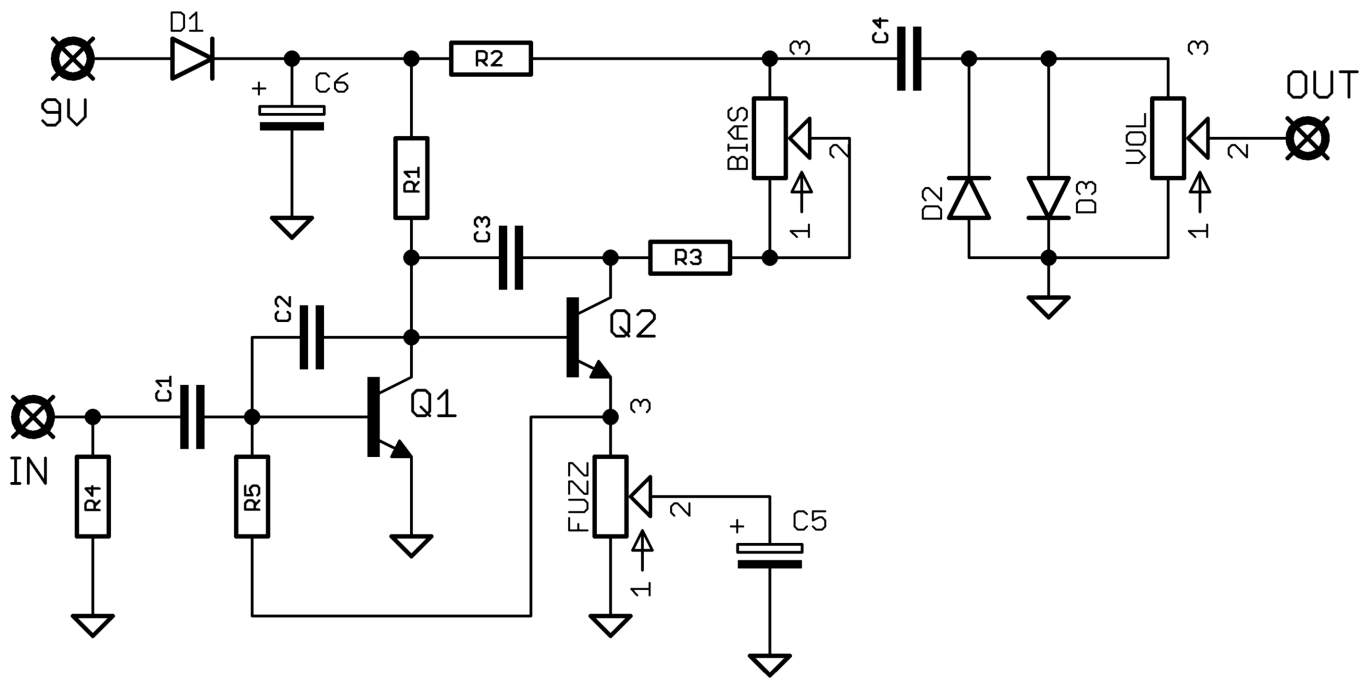


Before you dig in, ensure you download and read the **General Build Guide**.

It contains all the information you need for a successful outcome.



Schematic + BOM

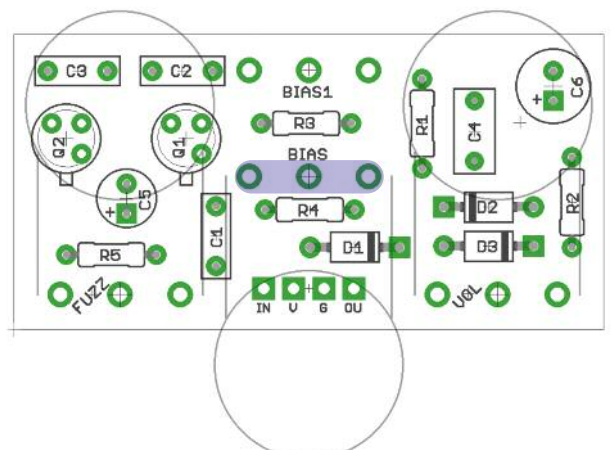
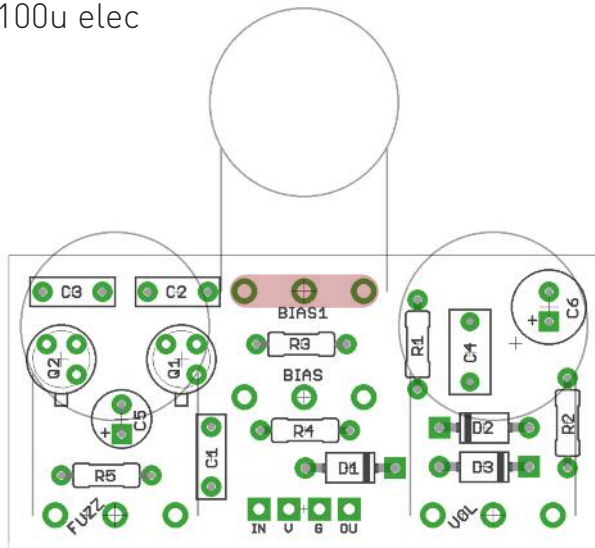


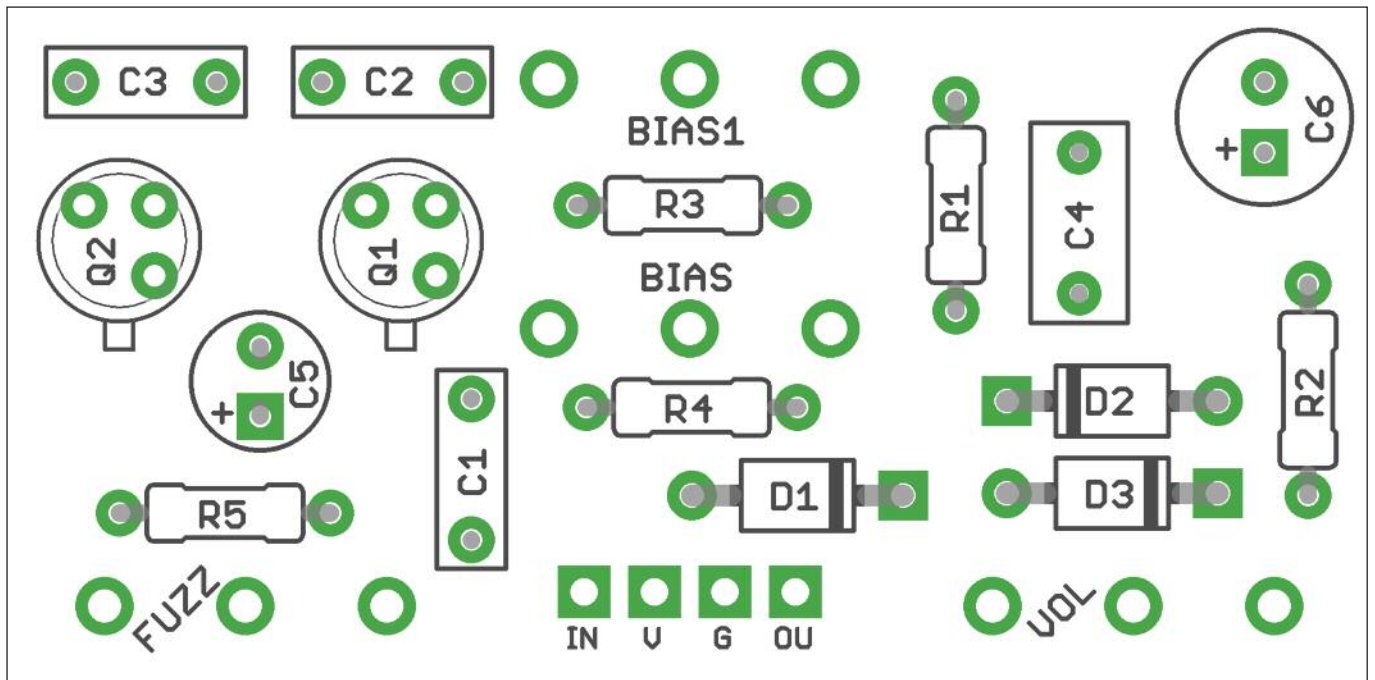
R1	3K9	D1	1N5817
R2	2K7	D2-3	1N4148
R3	1K8	Q1-2	BC109C
R4	1M	BIAS	10KA
R5	120K	FUZZ	1KC
C1	47n	VOL	500KB
C2	470p		
C3	47p		
C4	100n		
C5	10u elec		
C6	100u elec		

There are two sets of pads for the BIAS control.

The top set (red) will give you the same control layout as the original pedal.

The bottom (blue) will be a 'normal' three-pot setup.

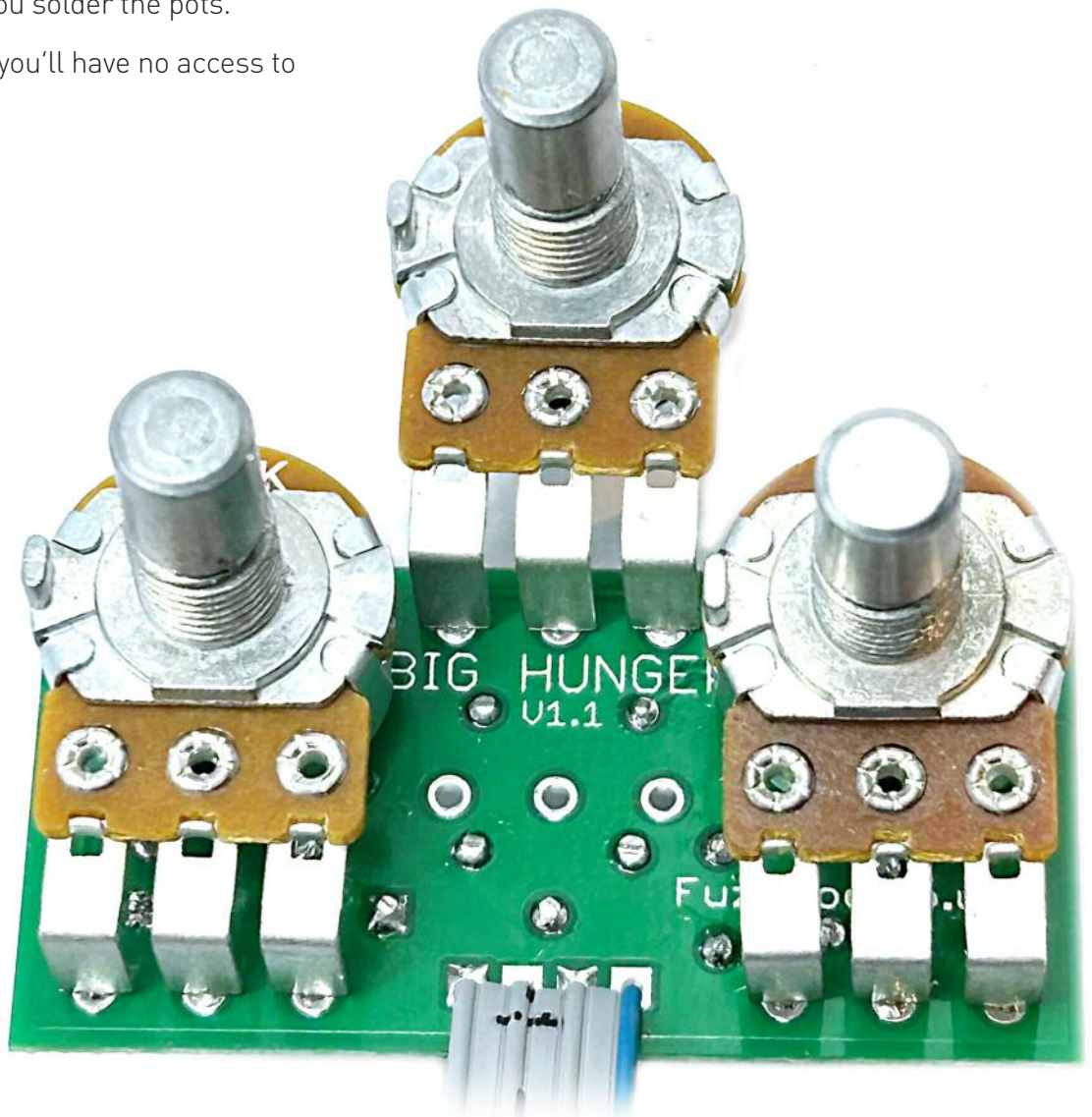




Snap the small metal tag off the pots so they can be mounted flush in the box.

You should solder all other board-mounted components before you solder the pots.

Once they're in place you'll have no access to much of the board.



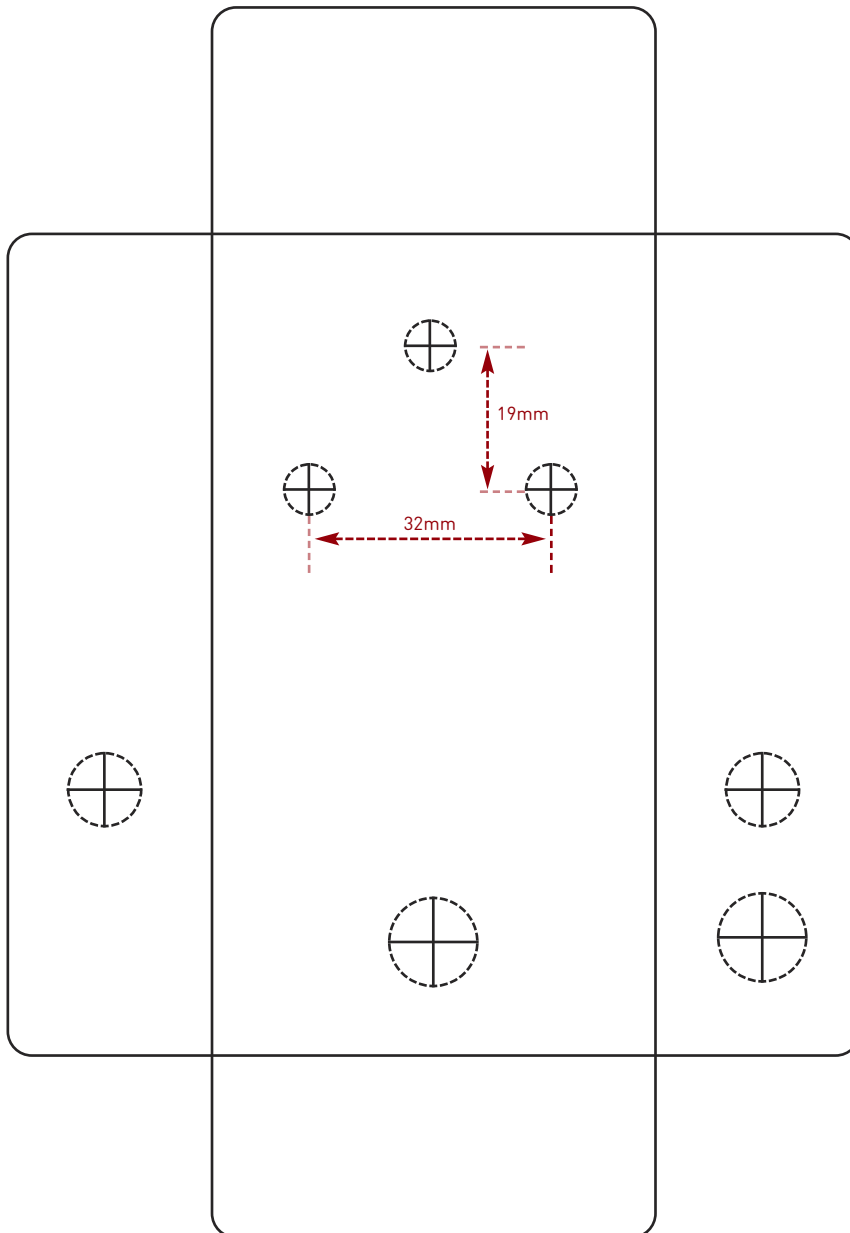
Drilling template

Hammond 1590B - 60 x 111 x 31mm

Drill sizes listed are minimum.
It's a good idea to add 1mm to anything mounted on the PCB that'll poke through the front of the enclosure.

Drill sizes:

Pots	7mm
Jacks	10mm
Footswitch	12mm
DC Socket	12mm
Toggle switches	6mm
Rotary switches	10mm



This template is a rough guide only. You should ensure correct marking of your enclosure before drilling. You use this template at your own risk.

Pedal Parts Ltd can accept no responsibility for incorrect drilling of enclosures.

Drilling template

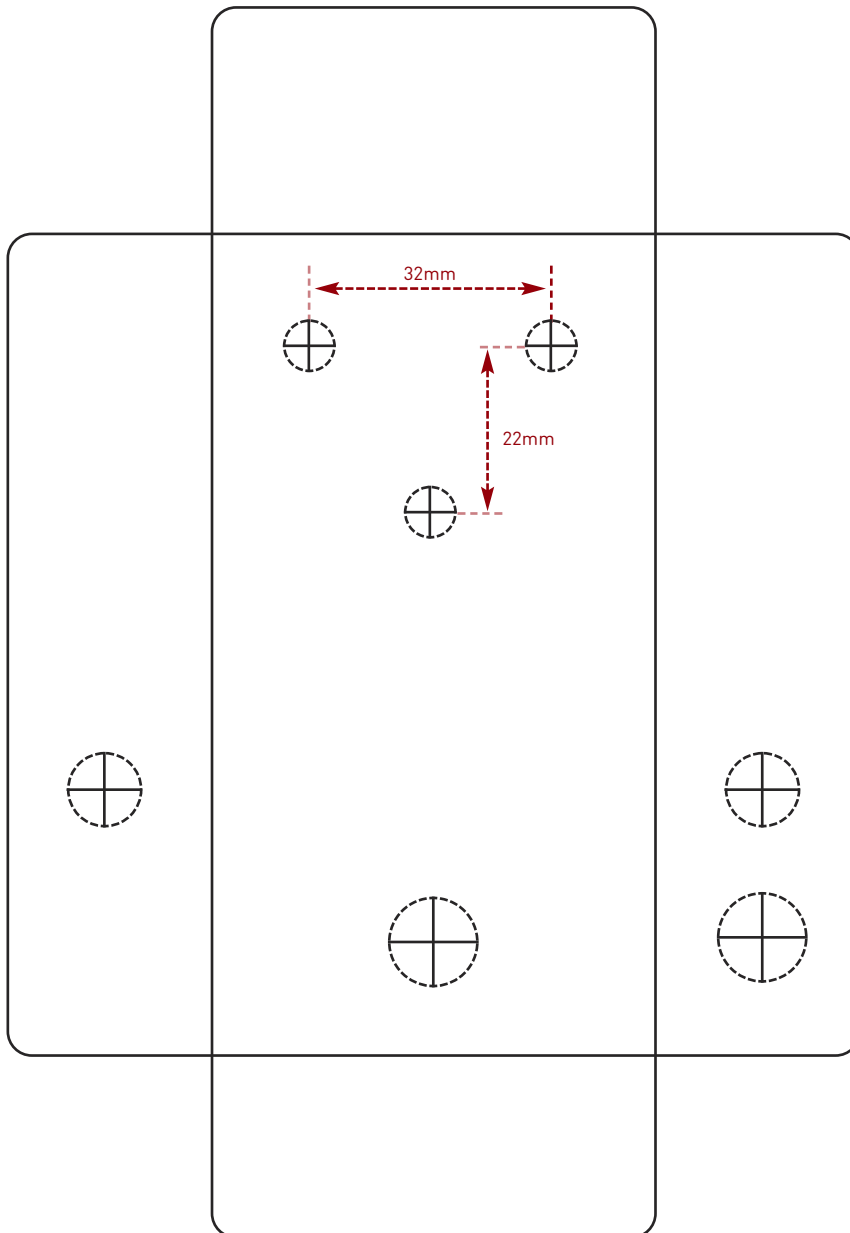
Hammond 1590B - 60 x 111 x 31mm

Drill sizes listed are minimum.

It's a good idea to add 1mm to anything mounted on the PCB that'll poke through the front of the enclosure.

Drill sizes:

Pots	7mm
Jacks	10mm
Footswitch	12mm
DC Socket	12mm
Toggle switches	6mm
Rotary switches	10mm



This template is a rough guide only. You should ensure correct marking of your enclosure before drilling. You use this template at your own risk.

Pedal Parts Ltd can accept no responsibility for incorrect drilling of enclosures.

FuzzDog.co.uk