

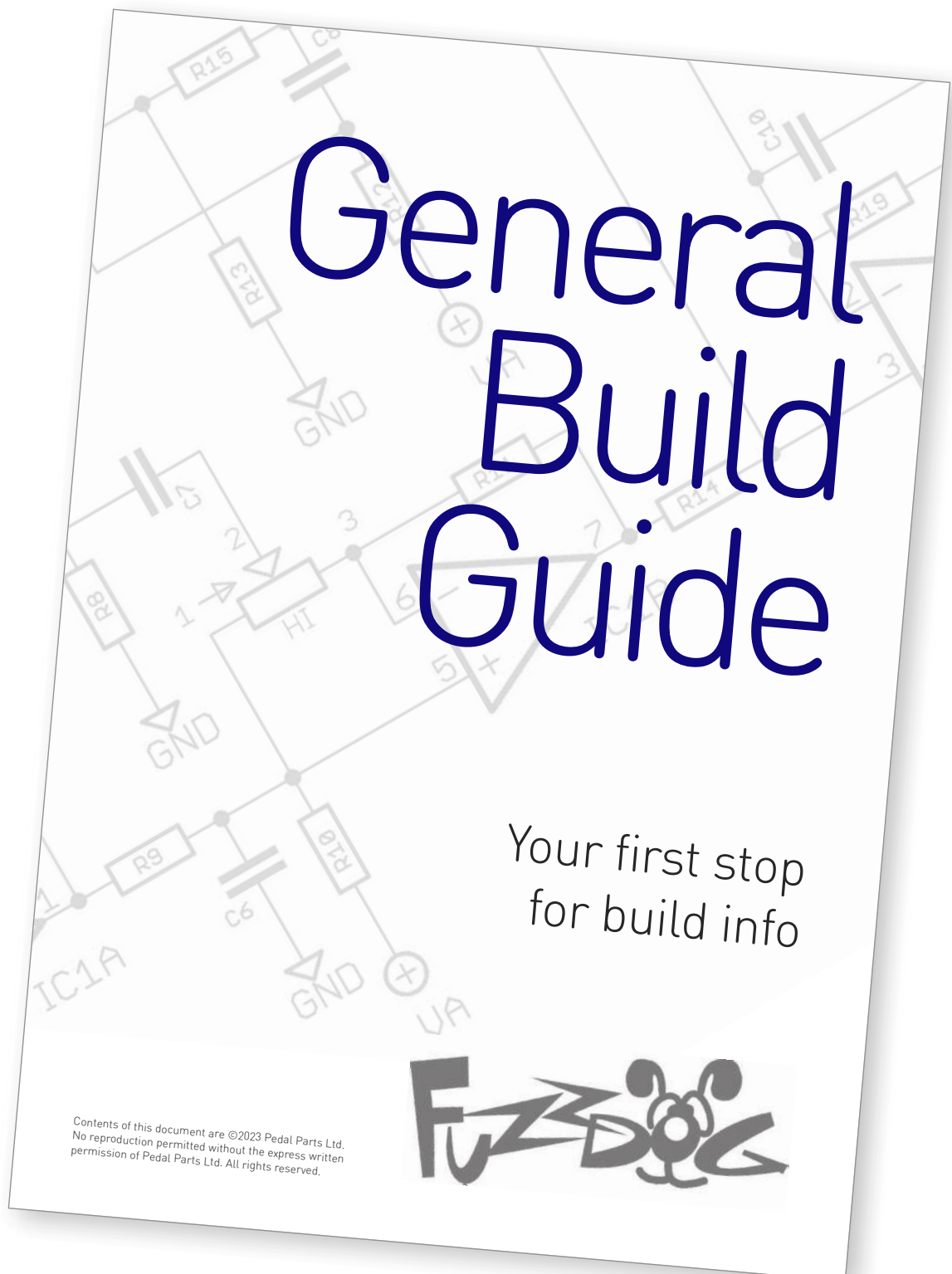
Behold!

Crazy wicked fun
fuzz-verb-drone-athon

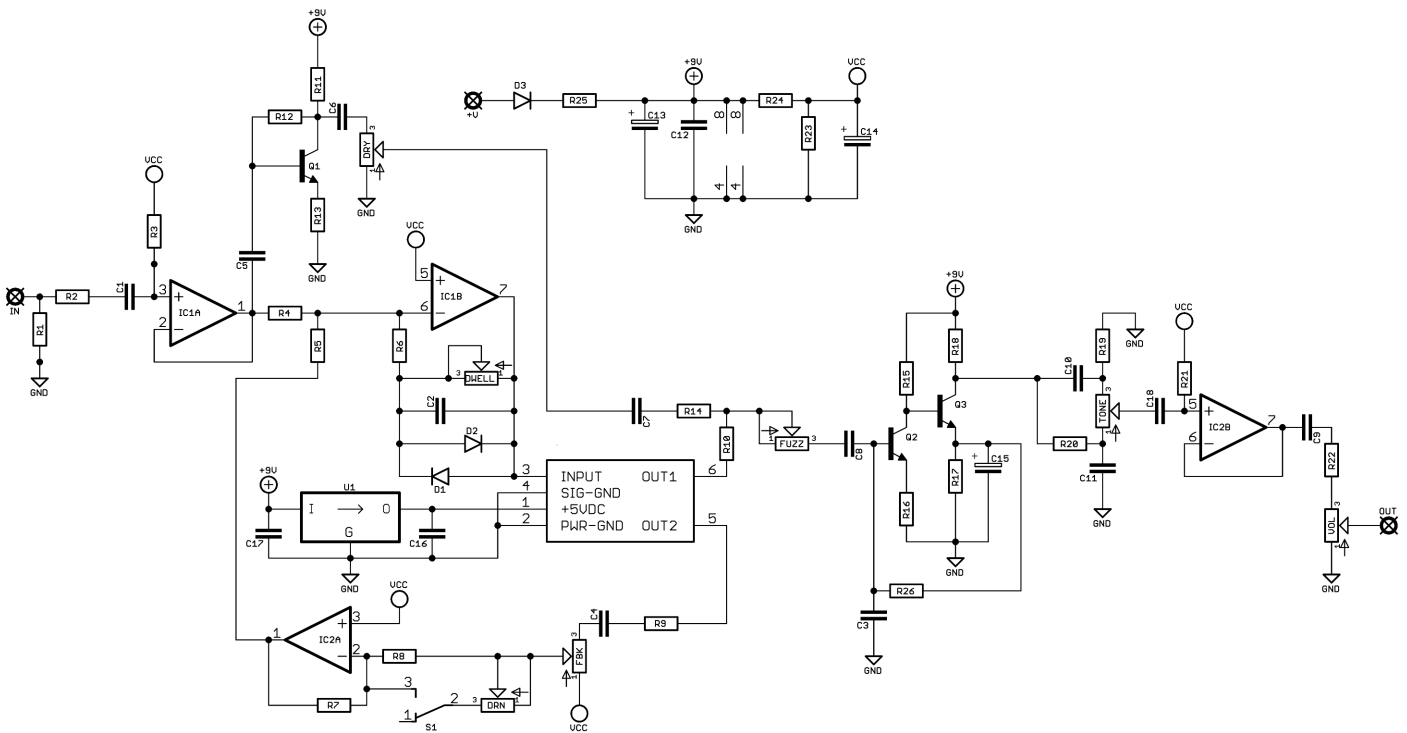


Before you dig in, ensure you download and read the **General Build Guide**.

It contains all the information you need for a successful outcome.



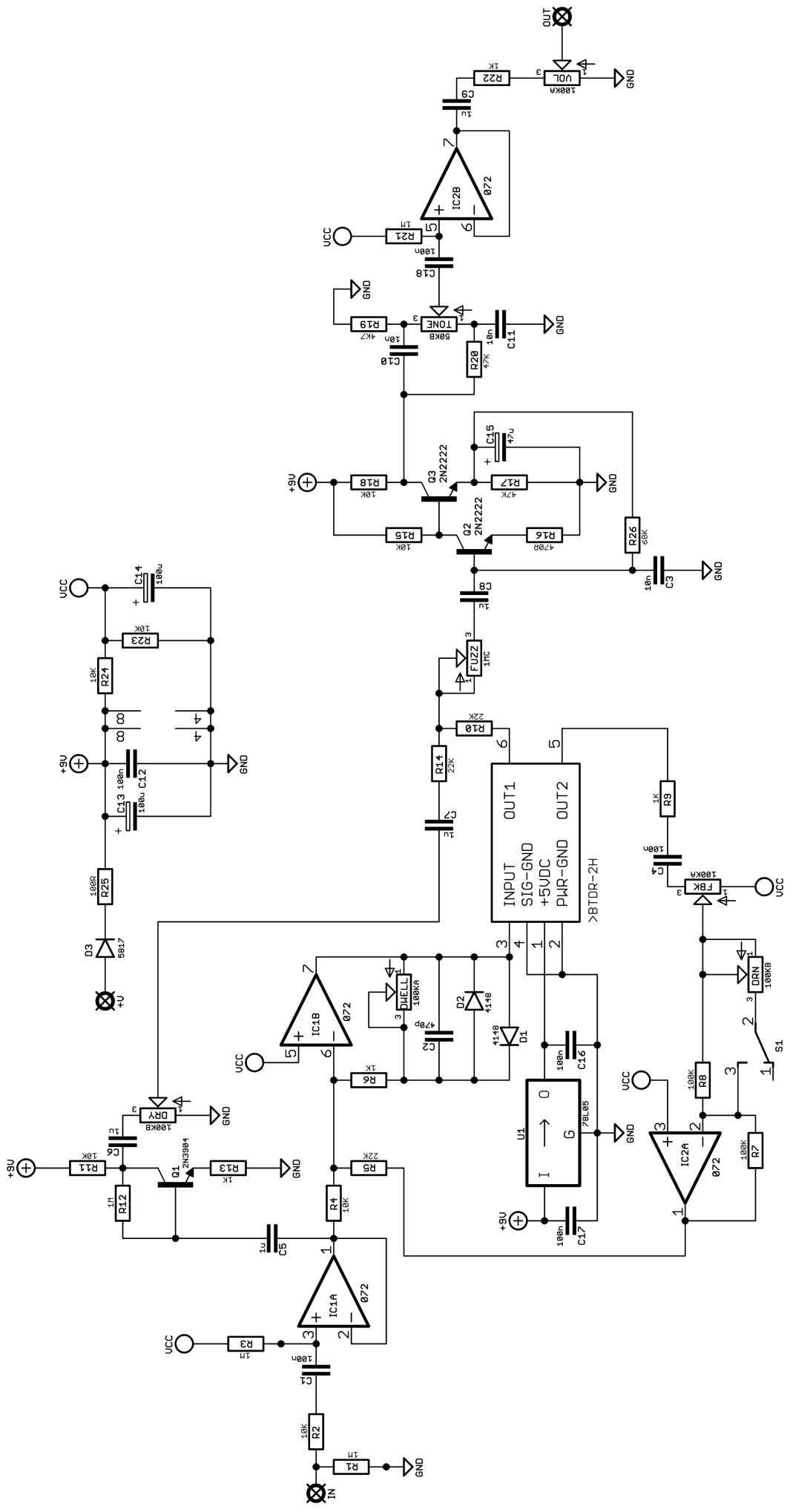
Schematic + BOM

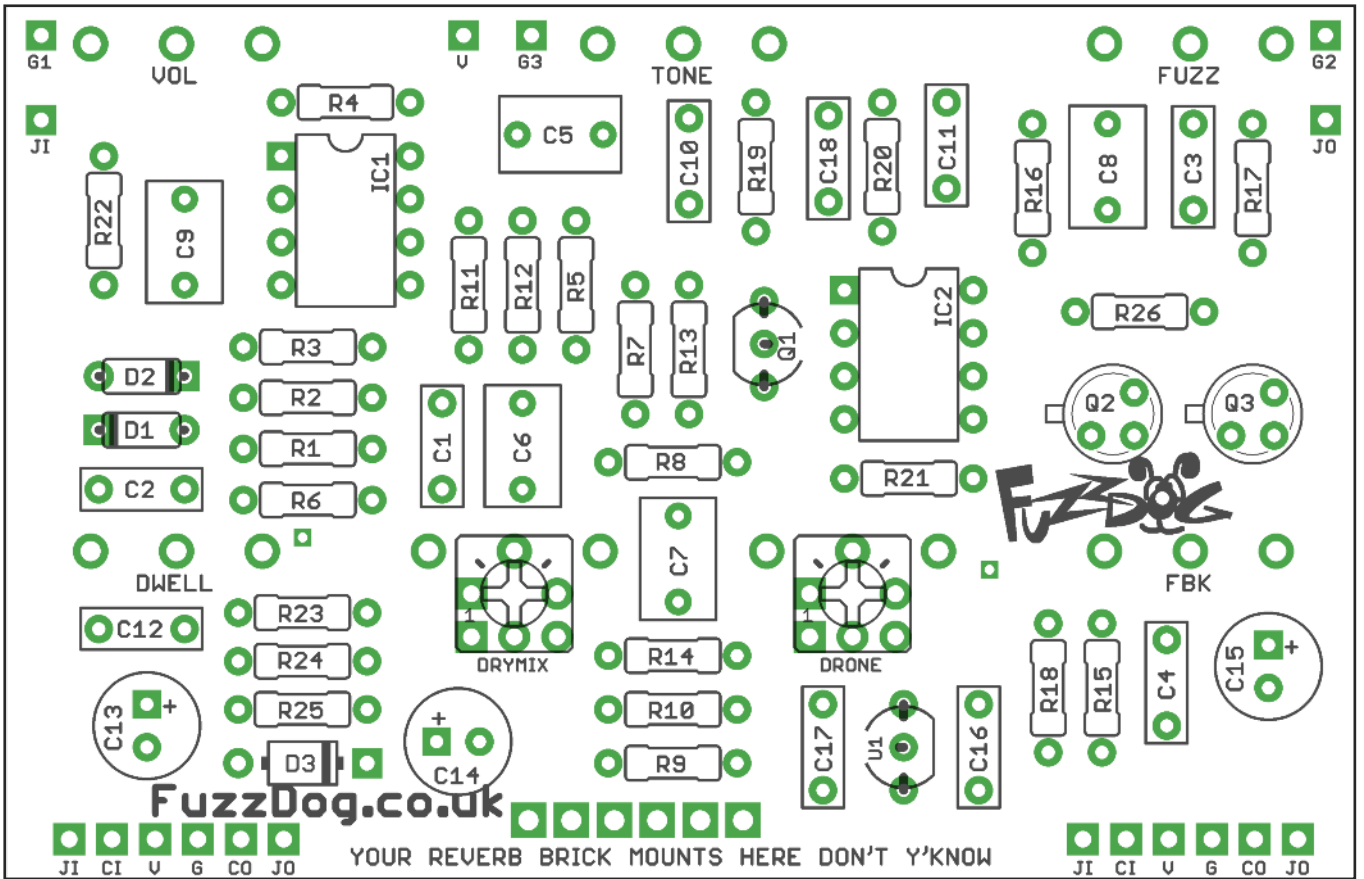


| | | | | |
|--------|------------------|--|--|--|
| R1 | 1M | | | |
| R2 | 10K | | | |
| R3 | 1M | | | |
| R4 | 10K | | | |
| R5 | 22K | | | |
| R6 | 1K | | | |
| R7 | 100K | | | |
| R8 | 100K | | | |
| R9 | 1K | | | |
| R10 | 22K | | | |
| R11 | 10K | | | |
| R12 | 1M | | | |
| R13 | 1K | | | |
| R14 | 22K | | | |
| R15 | 10K | | | |
| R16 | 470R | | | |
| R17 | 47K | | | |
| R18 | 10K | | | |
| R19 | 4K7 | | | |
| R20 | 47K | | | |
| R21 | 1M | | | |
| R22 | 1K | | | |
| R23 | 10K | | | |
| R24 | 10K | | | |
| R25 | 100R | | | |
| R26 | 68K | | | |
| C1 | 100n | | | |
| C2 | 470p | | | |
| C3 | 10n | | | |
| C4 | 100n | | | |
| C5 | 1u | | | |
| C6 | 1u | | | |
| C7 | 1u | | | |
| C8 | 1u | | | |
| C9 | 1u | | | |
| C10 | 10n | | | |
| C11 | 10n | | | |
| C12 | 100n | | | |
| C13 | 100u elec | | | |
| C14 | 100u elec | | | |
| C15 | 47u elec | | | |
| C16 | 100n | | | |
| C17 | 100n | | | |
| C18 | 100n | | | |
| D1-2 | 1N4148 | | | |
| D3 | 1N5817 | | | |
| Q1 | 2N3904 | | | |
| Q2-3 | 2N2222 | | | |
| IC1-2 | TL072 | | | |
| DRONE | 100KB / trimmer* | | | |
| DRYMIX | 100KB / trimmer* | | | |
| DWELL | 100KA | | | |
| FBACK | 100KA | | | |
| FUZZ | 1MC | | | |
| TONE | 50KB | | | |
| VOL | 100KA | | | |
| U1 | 78L05 | | | |

*You can use internal trimmers for these two controls, but where's the fun in that.

A long delay BTDR-2H gives the best results.



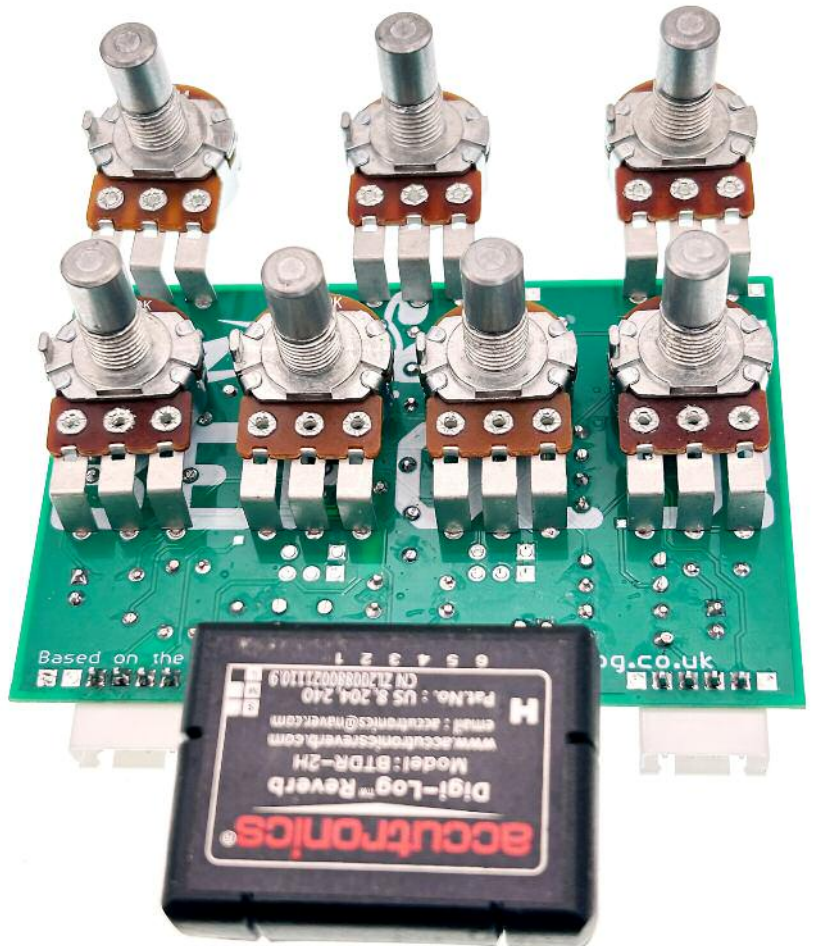


Snap the small metal tag off the pots so they can be mounted flush in the box.

You should solder all other board-mounted components before you solder the pots.

Once they're in place you'll have no access to much of the board.

You can use a momentary SPST footswitch or a latching 3PDT unit for the drone control. See next page.



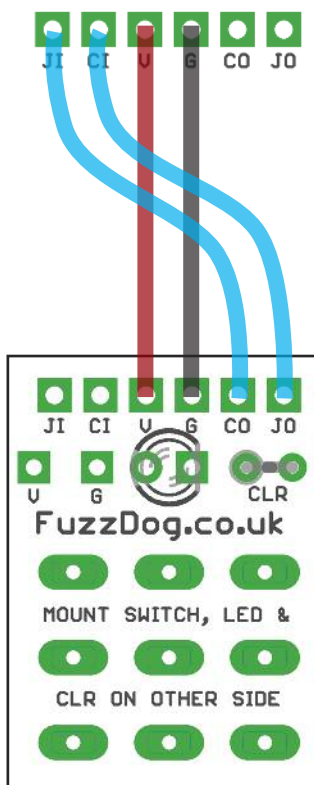
Drone footswitch

Looking at the component side of the PCB, the connections for this are from the right hand side Direct-Connect pads.

The JI and CI pads are the open connection for the Drone switch. Really we should have used the CO and JO pads, as the CI pad is connected to ground on bypass, which would mess up that section of the circuit. No matter - that's solved on the daughterboard.

The V and G pads are also connected to 9V/Ground so you can run these to the footswitch daughterboard if using a latching 3PDT.

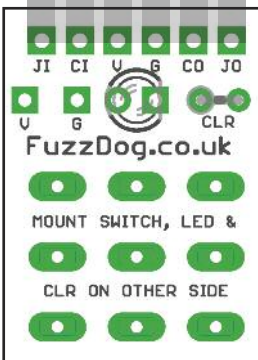
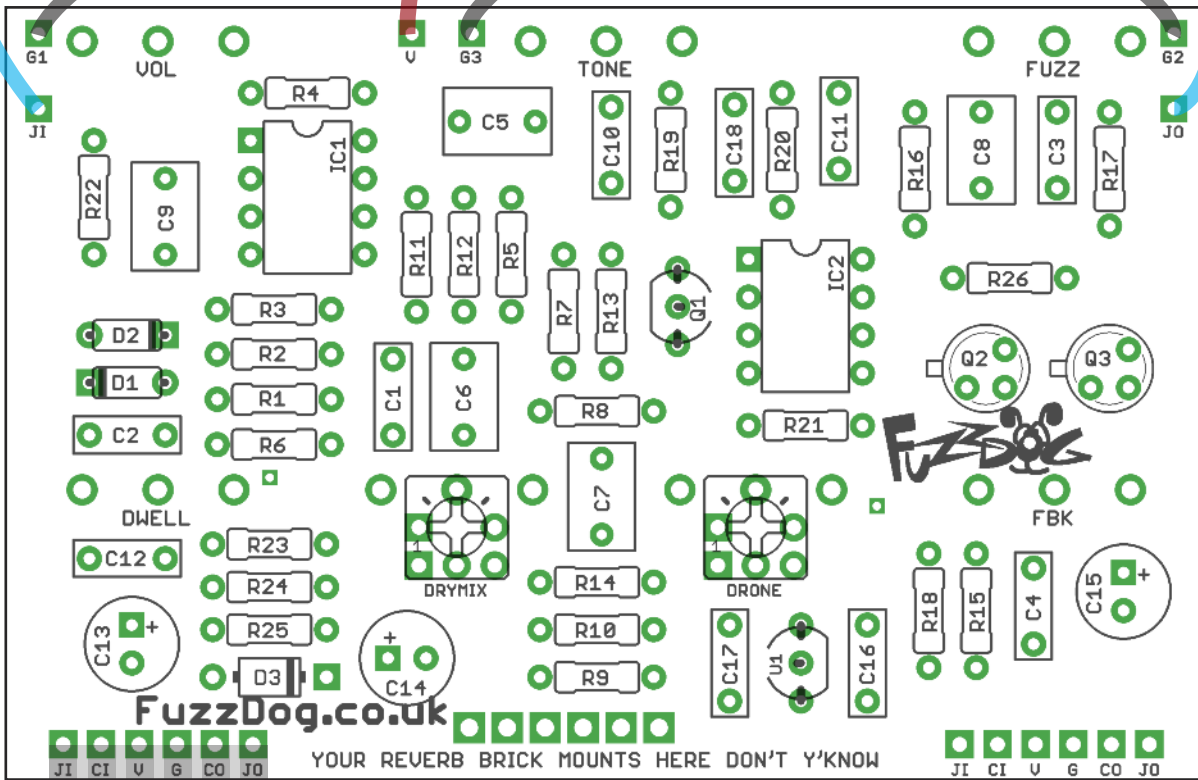
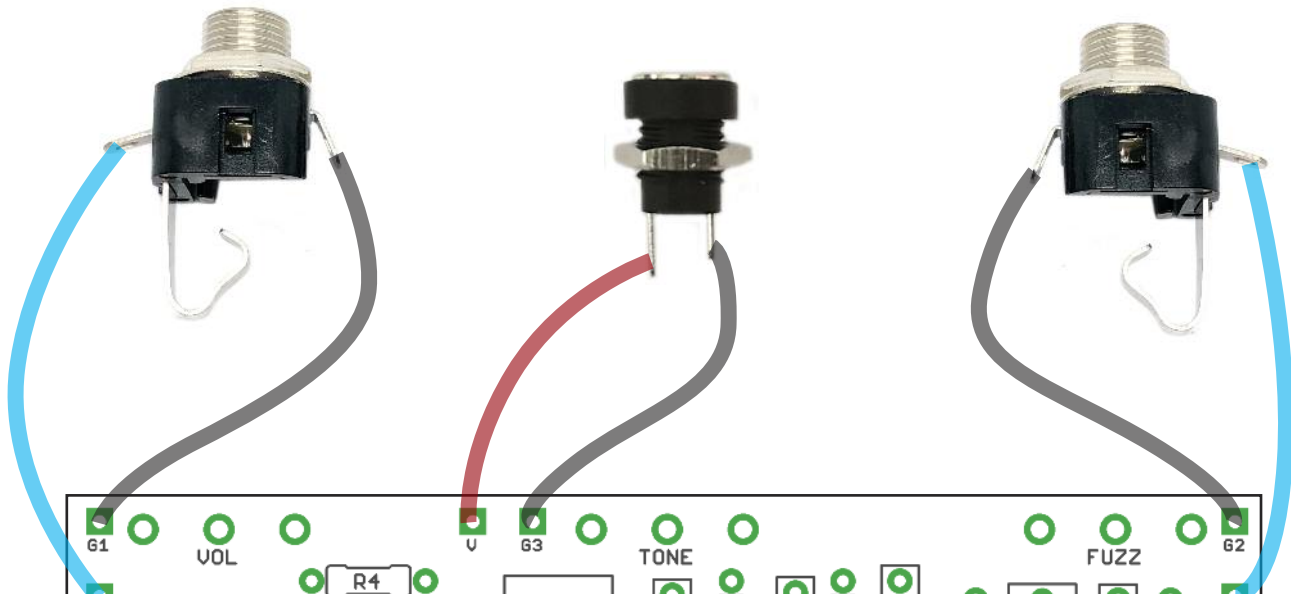
Latching 3PDT



Momentary SPDT



Wiring



Drilling template

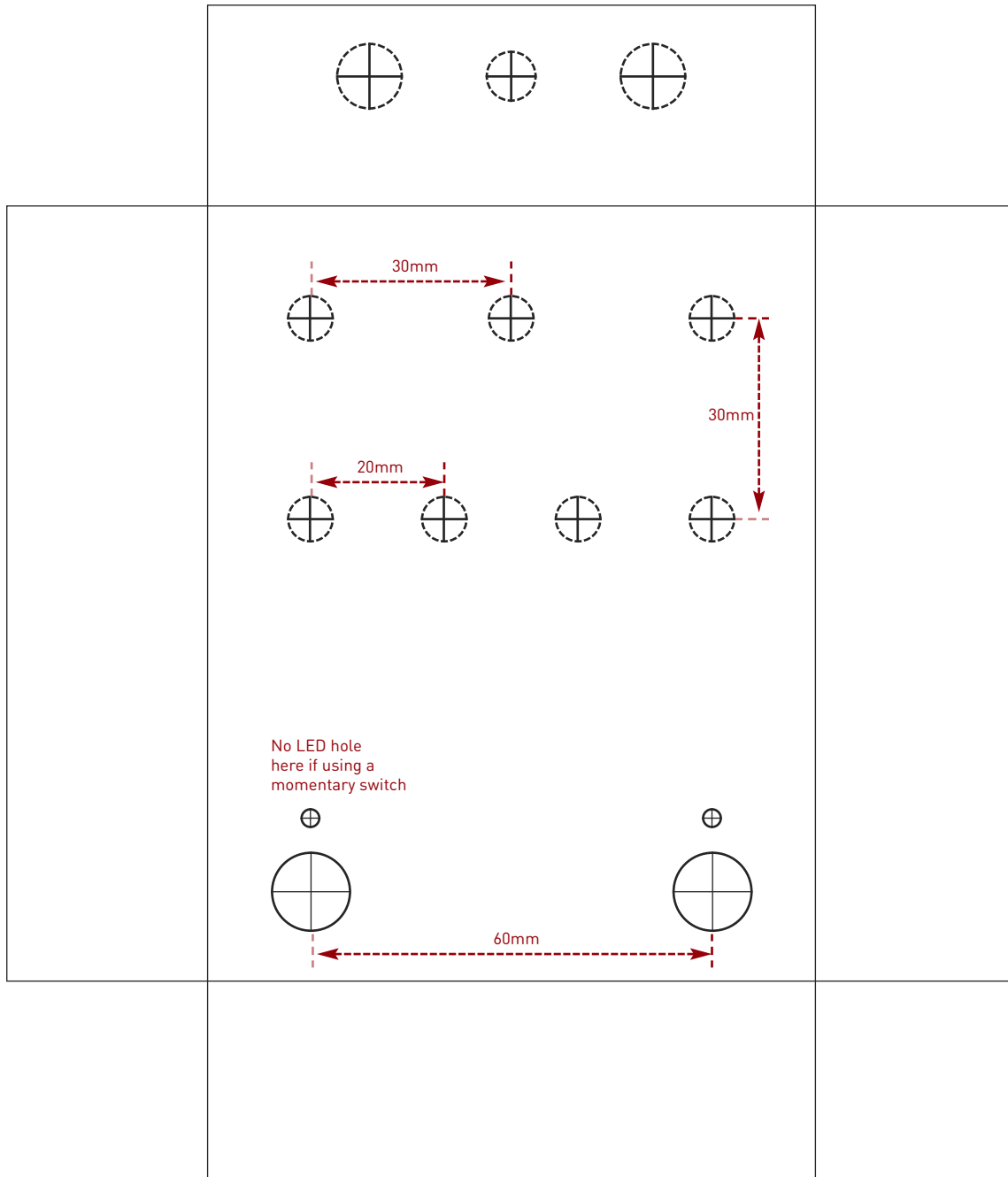
Hammond 1590BB

Drill sizes listed are minimum.

It's a good idea to add 1mm to anything mounted on the PCB that'll poke through the front of the enclosure.

Drill sizes:

| | |
|-----------------|------|
| Pots | 7mm |
| Jacks | 10mm |
| Footswitch | 12mm |
| DC Socket | 12mm |
| Toggle switches | 6mm |
| Rotary switches | 10mm |



This template is a rough guide only. You should ensure correct marking of your enclosure before drilling. You use this template at your own risk.

Pedal Parts Ltd can accept no responsibility for incorrect drilling of enclosures.

FuzzDog.co.uk