

BeatleVox

Get your Revolver on with this
Vox UL730-style fuzz

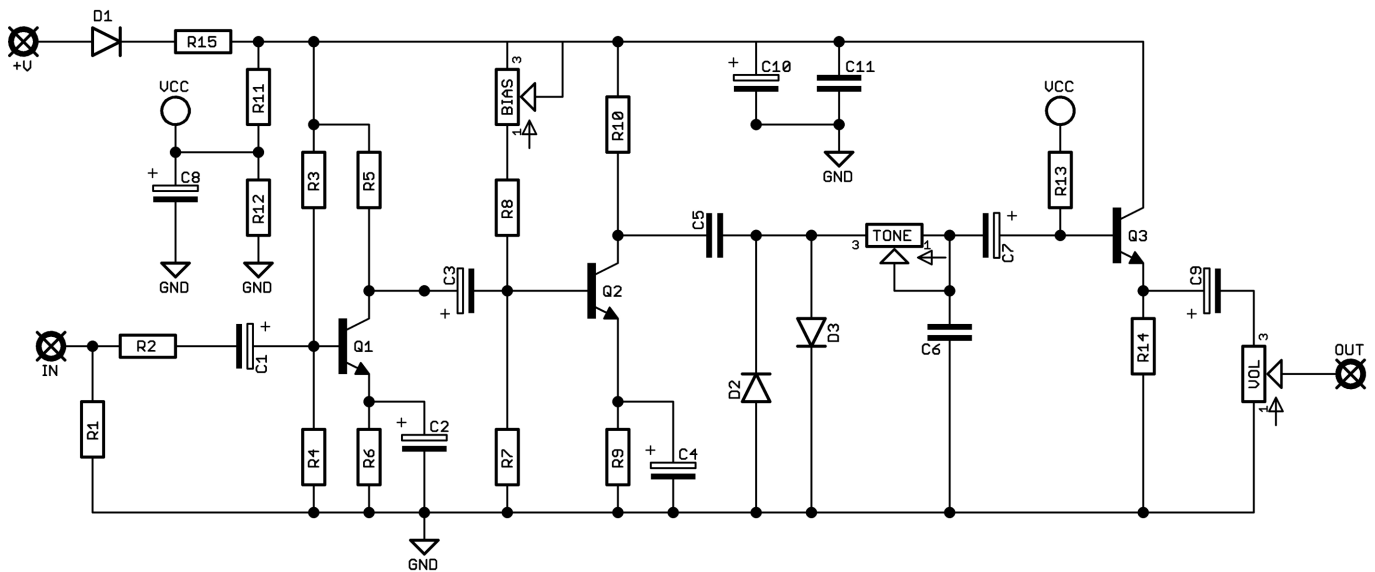


Before you dig in, ensure you download and read the **General Build Guide**.

It contains all the information you need for a successful outcome.



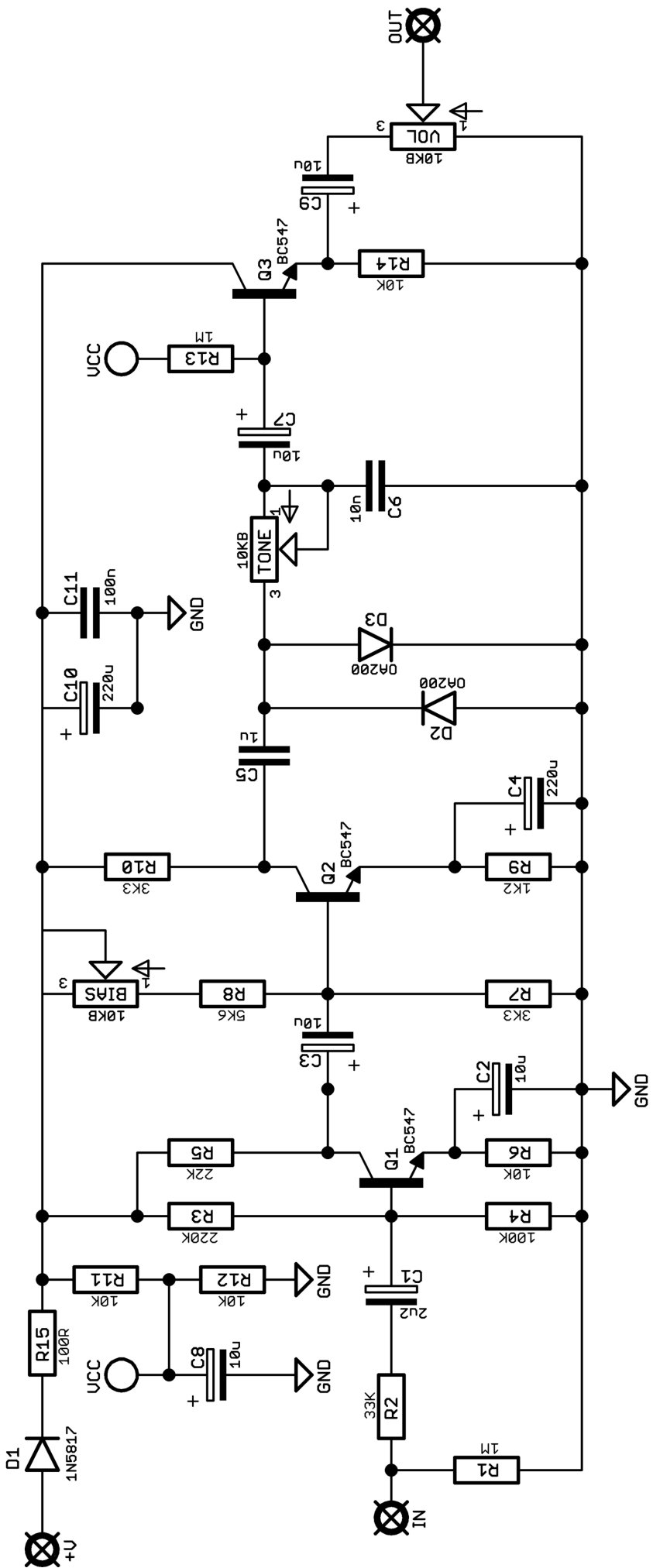
Schematic + BOM

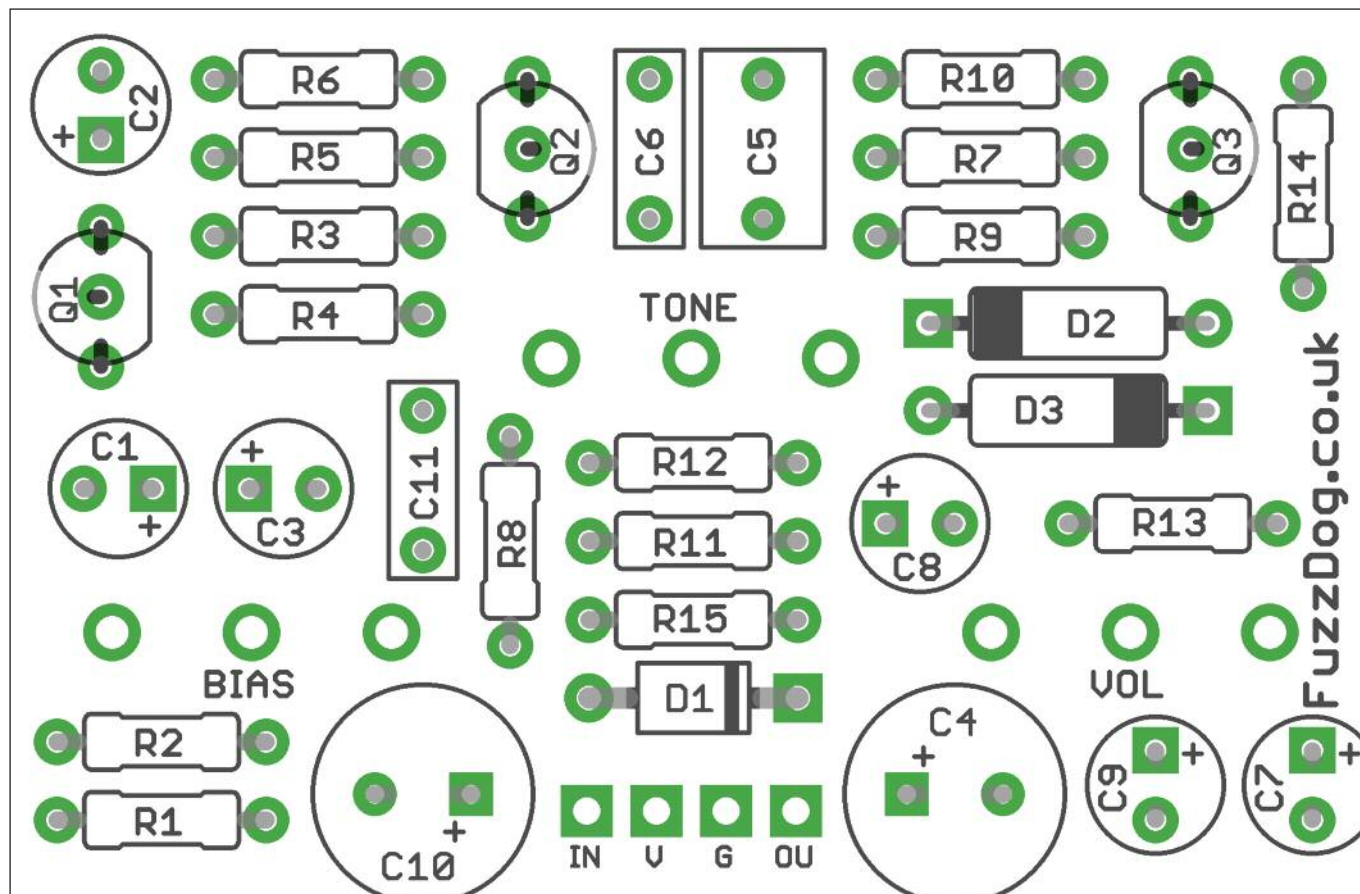


R1	1M
R2	33K
R3	220K
R4	100K
R5	22K
R6	10K
R7	3K3
R8	5K6
R9	1K2
R10	3K3
R11	10K
R12	10K
R13	1M
R14	10K
R15	100R

C1	2u2 elec
C2	10u elec
C3	10u elec
C4	220u elec
C5	1u
C6	10n
C7	10u elec
C8	10u elec
C9	10u elec
C10	220u elec
C11	100n

D1	1N5817
D2-3	OA200
Q1-3	BC547
BIAS	10KB
TONE	10KB
VOL	10KB

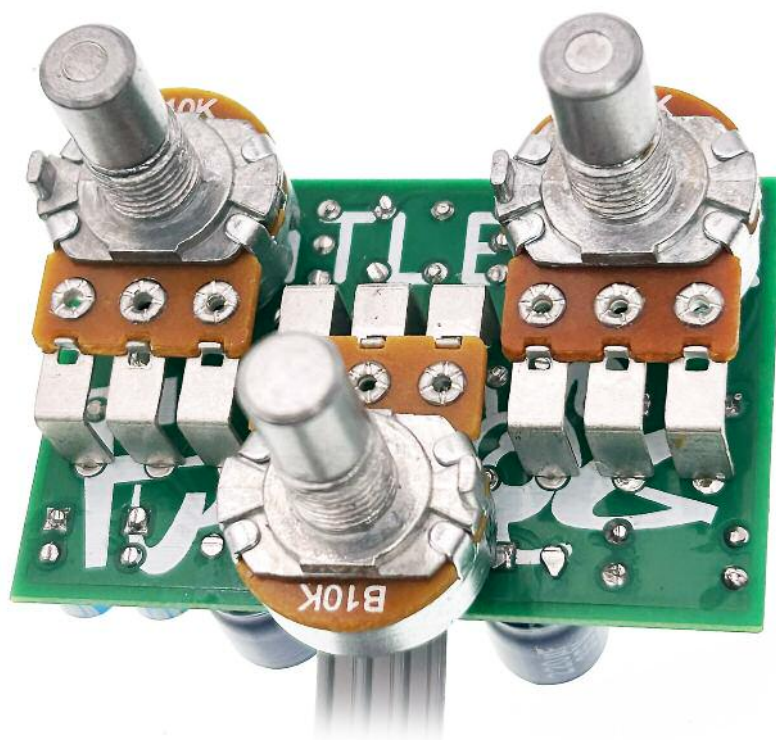




Snap the small metal tags off the pots so they can be mounted flush in the box.

You should solder all other board-mounted components before you solder the pots.

Once they're in place you'll have no access to much of the board.



Drilling template

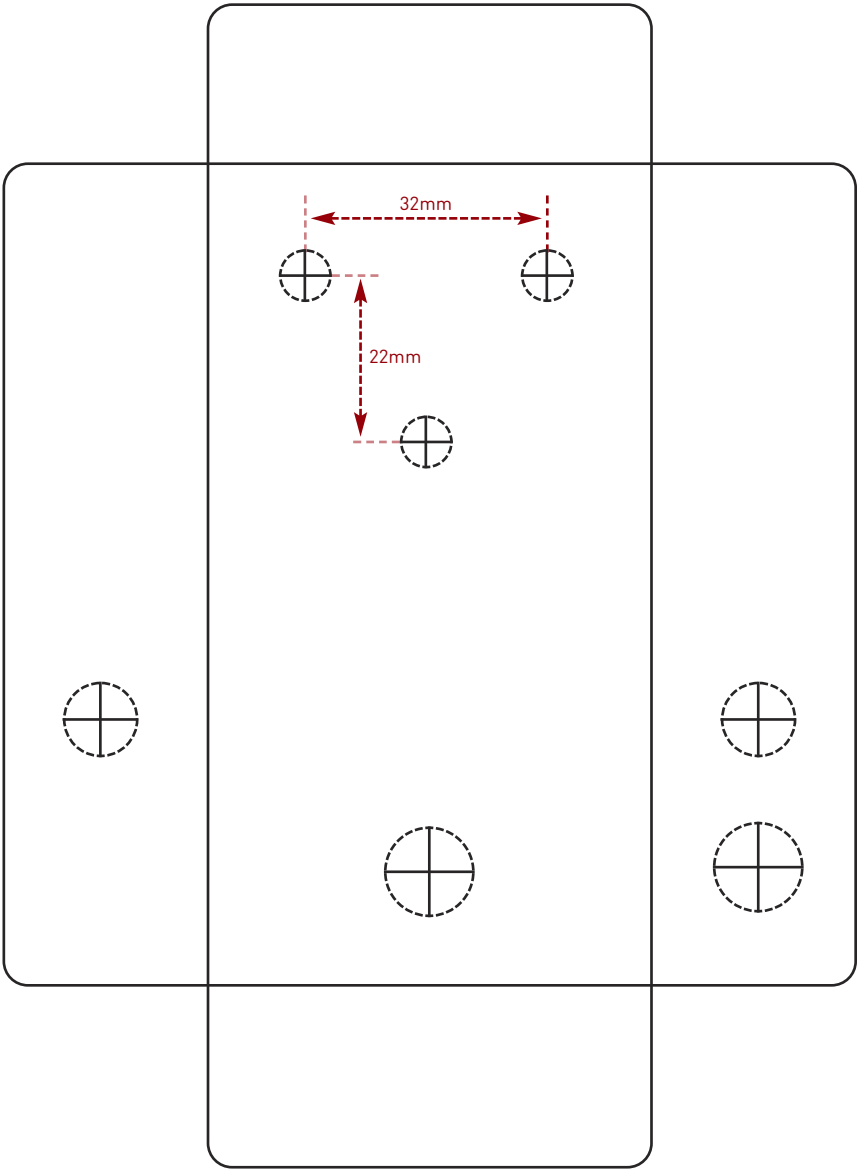
Hammond 1590B - 60 x 111 x 31mm

Drill sizes listed are minimum.

It's a good idea to add 1mm to anything mounted on the PCB that'll poke through the front of the enclosure.

Drill sizes:

Pots	7mm
Jacks	10mm
Footswitch	12mm
DC Socket	12mm
Toggle switches	6mm
Rotary switches	10mm



This template is a rough guide only. You should ensure correct marking of your enclosure before drilling. You use this template at your own risk.

Pedal Parts Ltd can accept no responsibility for incorrect drilling of enclosures.

FuzzDog.co.uk