

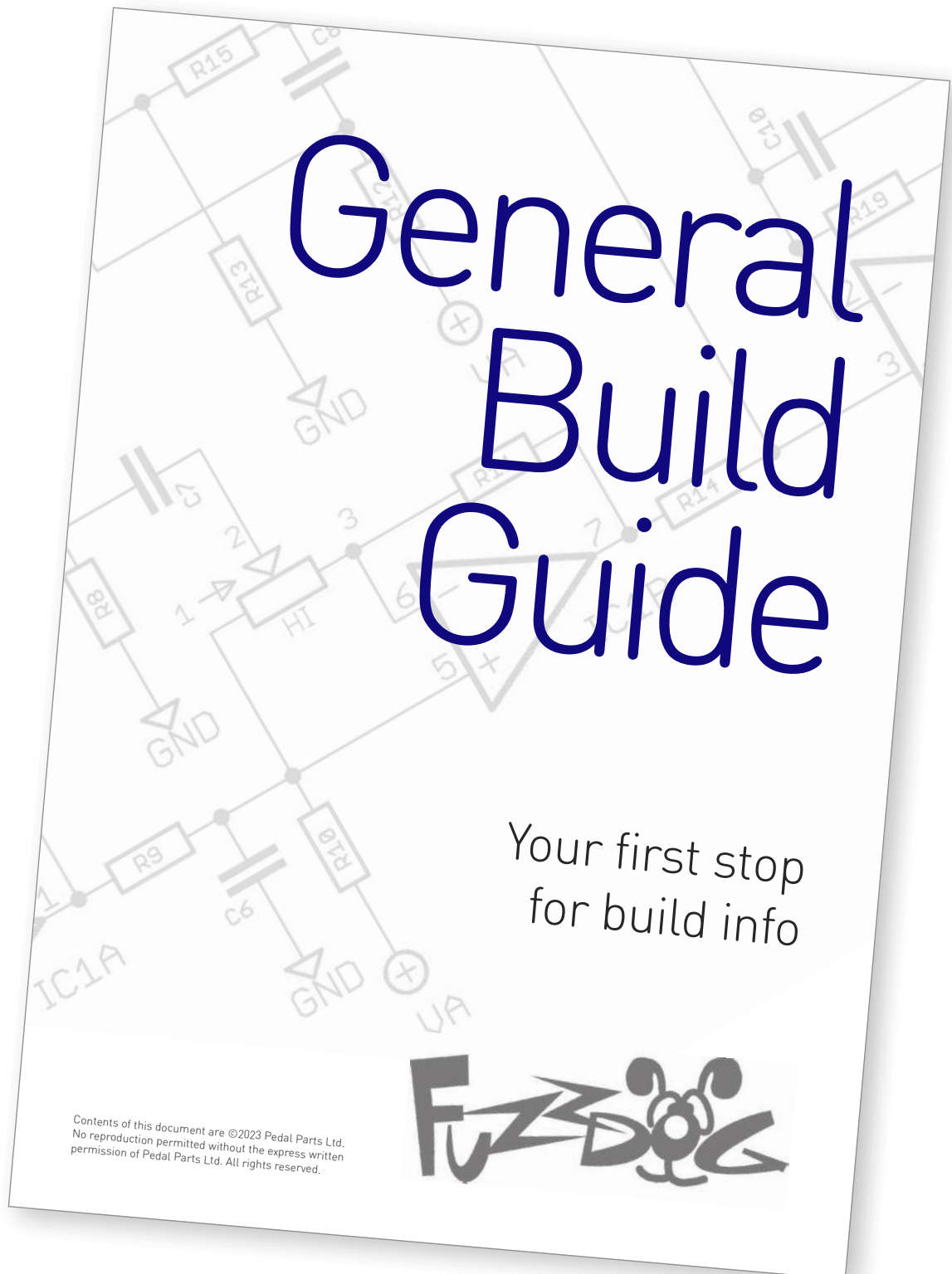
Bass Engine

As close as you'll get to
'Lemmy in a box'

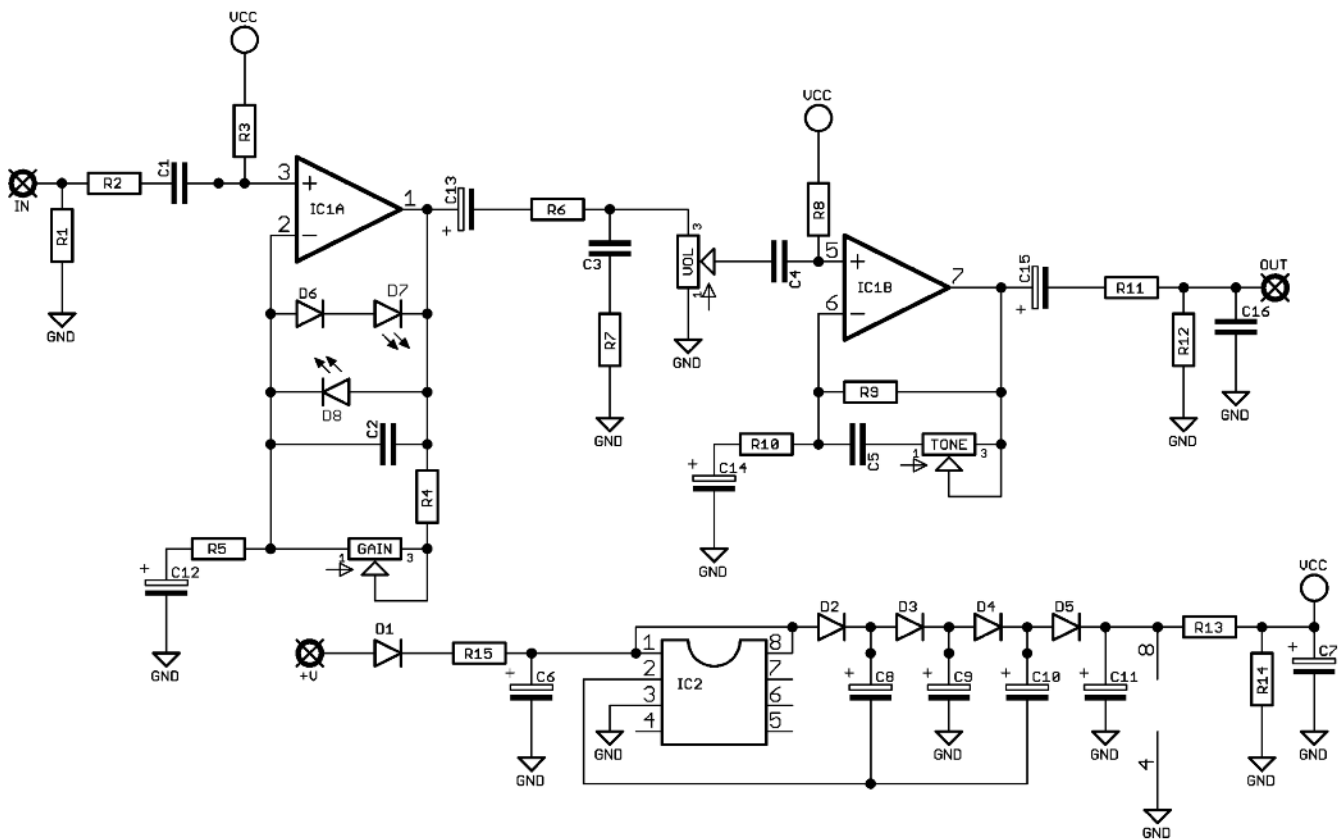


Before you dig in, ensure you download and read the **General Build Guide**.

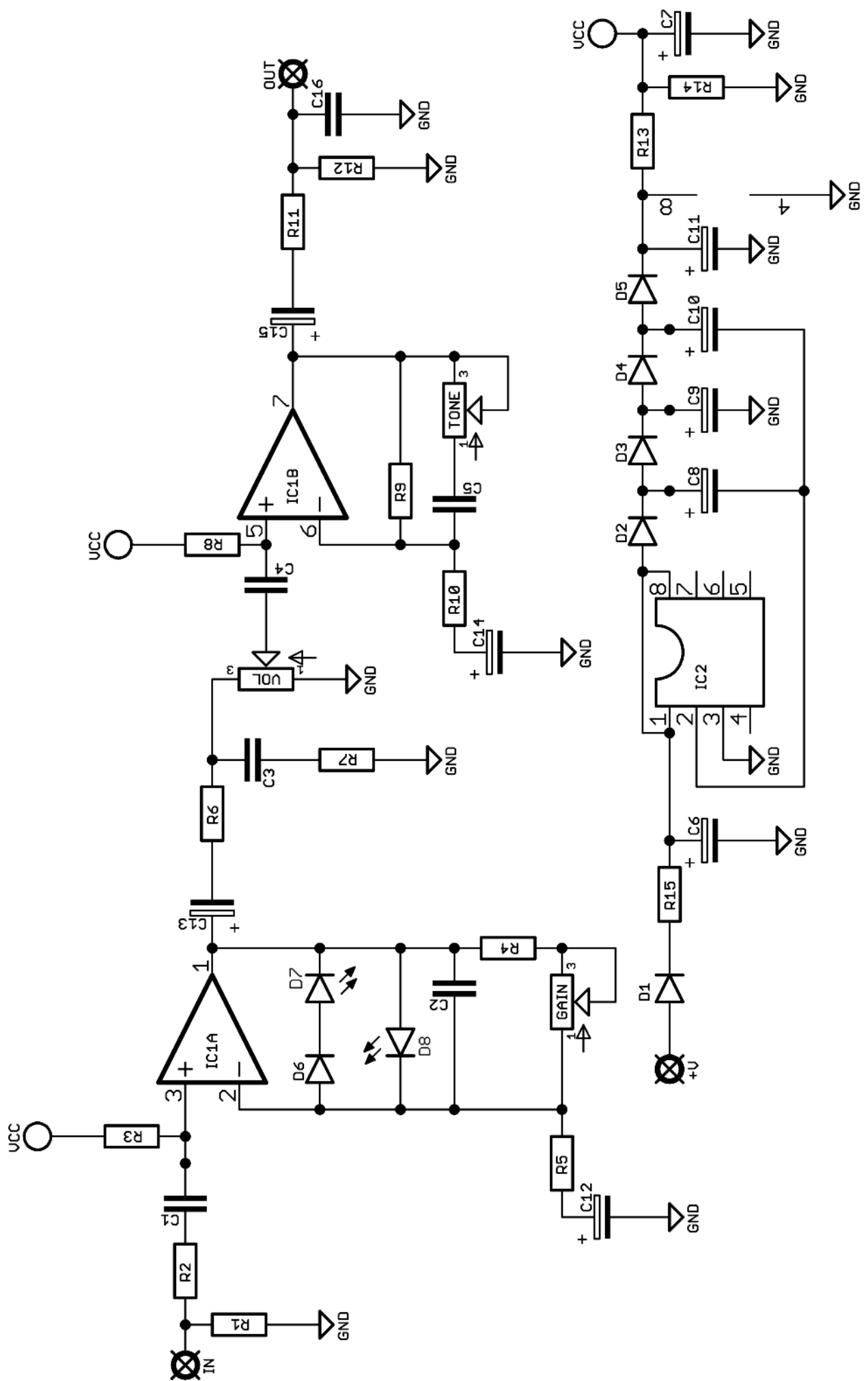
It contains all the information you need for a successful outcome.

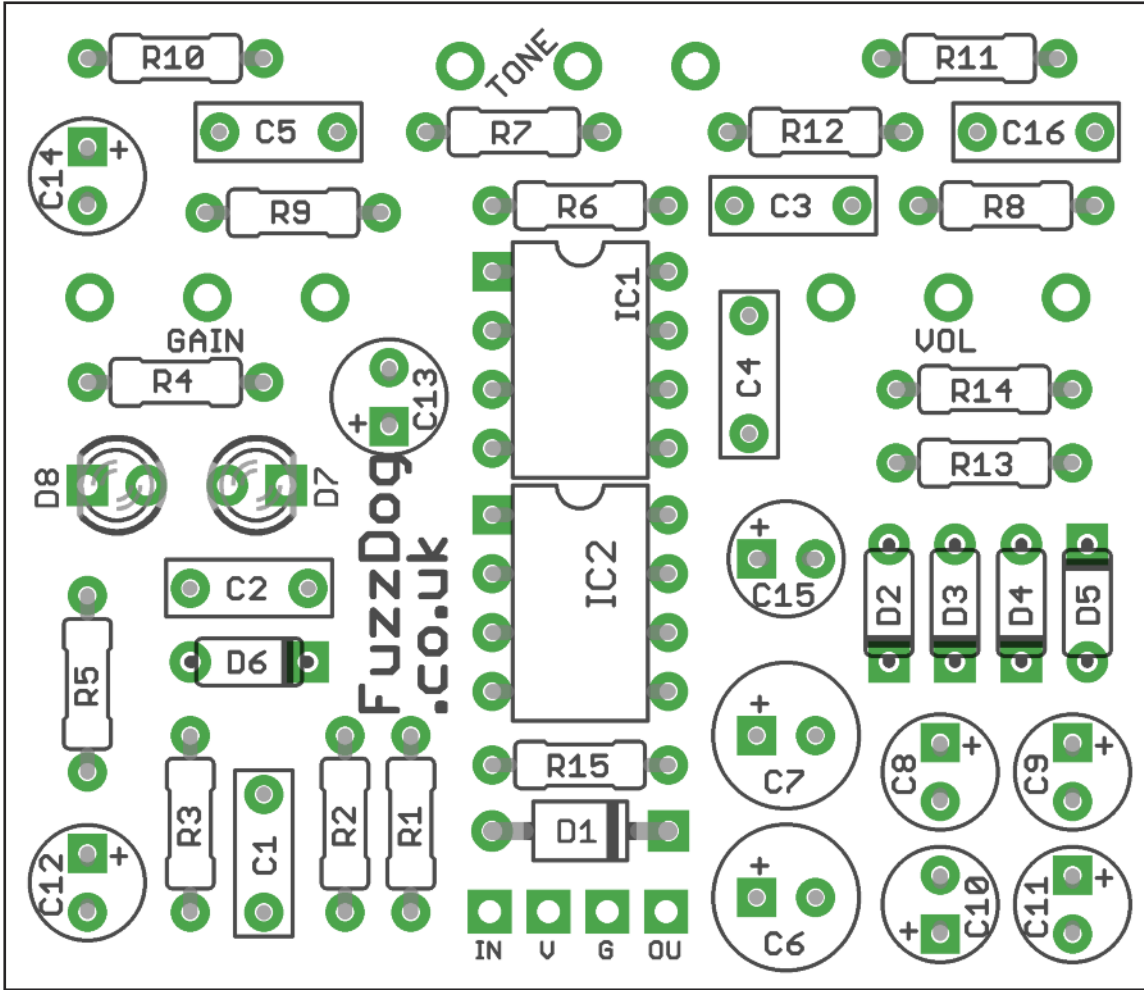


Schematic + BOM

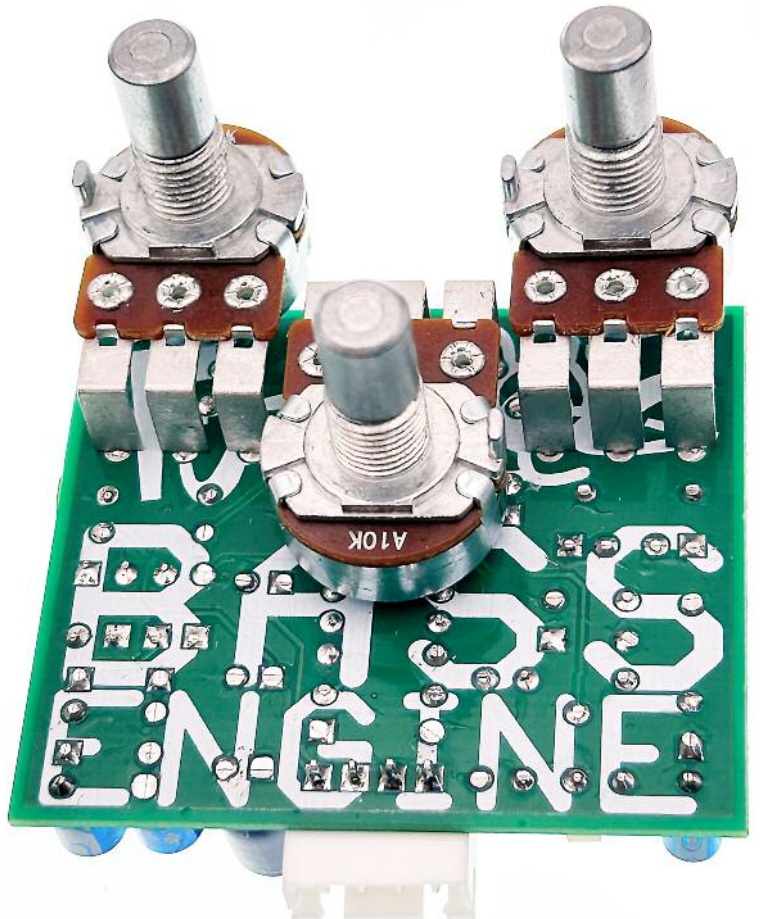


R1	1M	C1	100n	D1	1N5817
R2	10K	C2	2n2	D2-6	1N4148
R3	470K	C3	3n3	Q7-8	3mm Red LED
R4	2K2	C4	100n	IC1	TL072
R5	100R	C5	100n	IC2	7660SEPA/LT1054
R6	10K	C6	100u elec	GAIN	100KA
R7	51R	C7	47u elec	TONE	10KA
R8	1M	C8	10u elec	VOL	100KA
R9	10K	C9	10u elec		
R10	2K2	C10	10u elec		
R11	10K	C11	10u elec		
R12	10K	C12	2u2 elec		
R13	10K	C13	1u elec		
R14	10K	C14	1u elec		
R15	100R	C15	2u2 elec		
		C16	10n		





Snap the small metal tags off the pots so they can be mounted flush in the box.



Drilling template

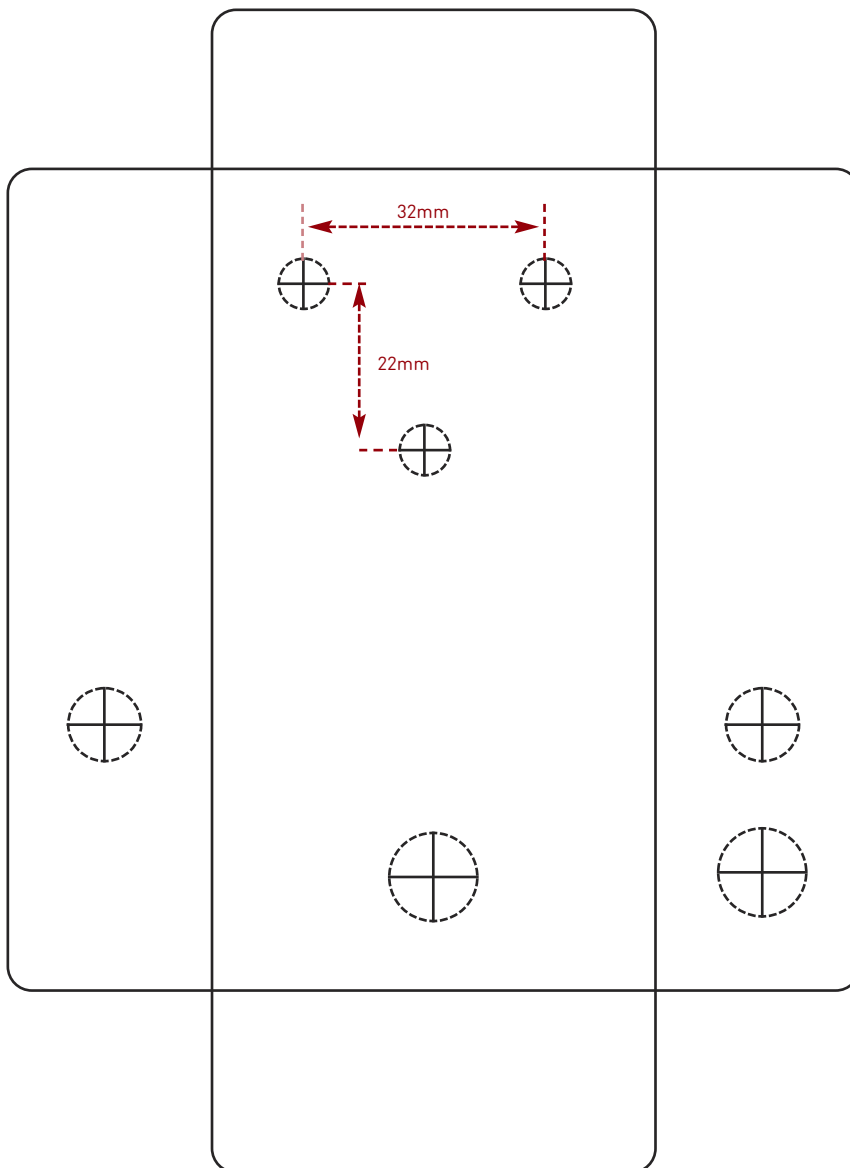
Hammond 1590B - 60 x 111 x 31mm

Drill sizes listed are minimum.

It's a good idea to add 1mm to anything mounted on the PCB that'll poke through the front of the enclosure.

Drill sizes:

Pots	7mm
Jacks	10mm
Footswitch	12mm
DC Socket	12mm
Toggle switches	6mm
Rotary switches	10mm



This template is a rough guide only. You should ensure correct marking of your enclosure before drilling. You use this template at your own risk.

Pedal Parts Ltd can accept no responsibility for incorrect drilling of enclosures.

FuzzDog.co.uk