

# Bass Creamer

Tube Screamer for the  
bass players

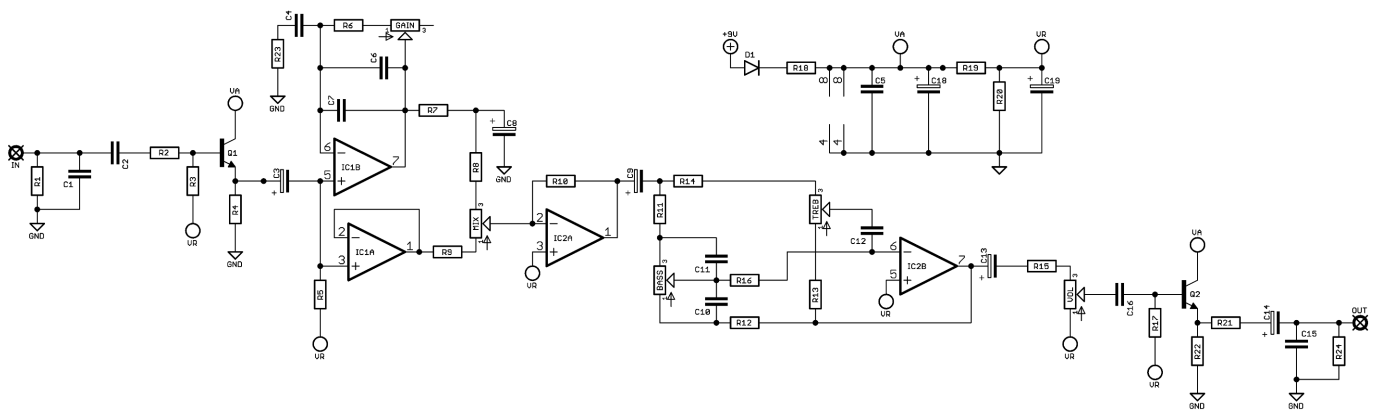


Before you dig in, ensure you download and read the **General Build Guide**.

It contains all the information you need for a successful outcome.



# Schematic + BOM



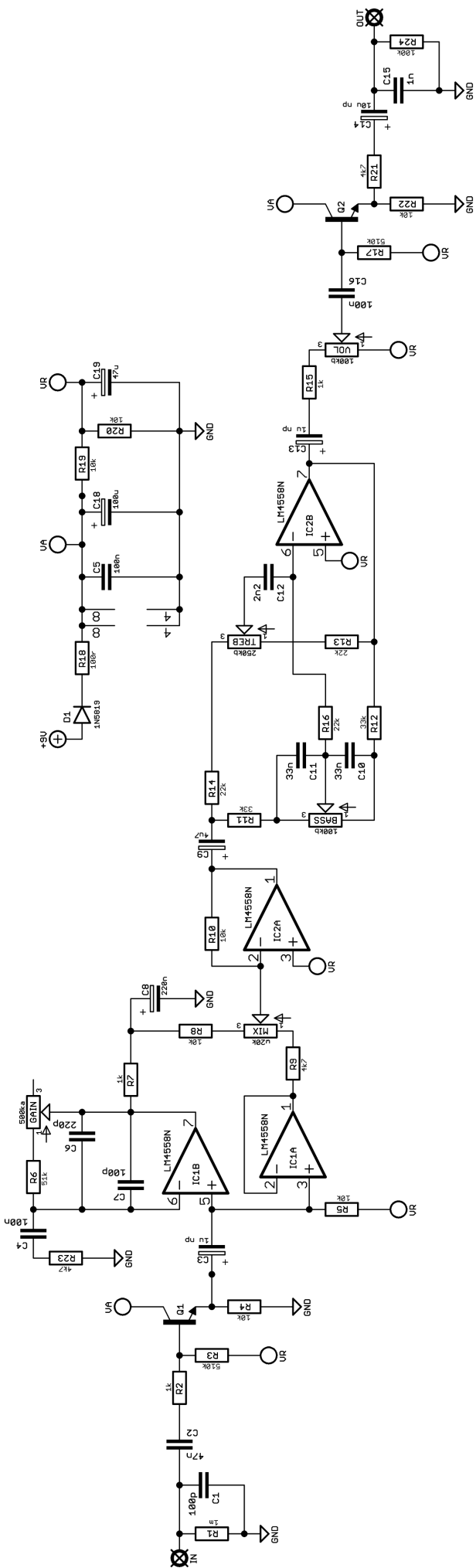
R1 1M  
 R2 1K  
 R3 510K  
 R4 10K  
 R5 10K  
 R6 51K  
 R7 1K  
 R8 10K  
 R9 4K7  
 R10 10K  
 R11 33K  
 R12 33K  
 R13 22K  
 R14 22K  
 R15 1K  
 R16 22K  
 R17 510K  
 R18 100R  
 R19 10K  
 R20 10K  
 R21 4K7  
 R22 10K  
 R23 4K7  
 R24 100K

C1 100p  
 C2 47n  
 C3 1u np elec\*  
 C4 100n  
 C5 100n  
 C6 220p  
 C7 100p  
 C8 0.22uf elec  
 C9 4u7 elec  
 C10 33n  
 C11 33n  
 C12 2n2  
 C13 1u np elec\*  
 C14 10u np elec\*  
 C15 1n  
 C16 100n  
 C18 100u elec  
 C19 47u elec

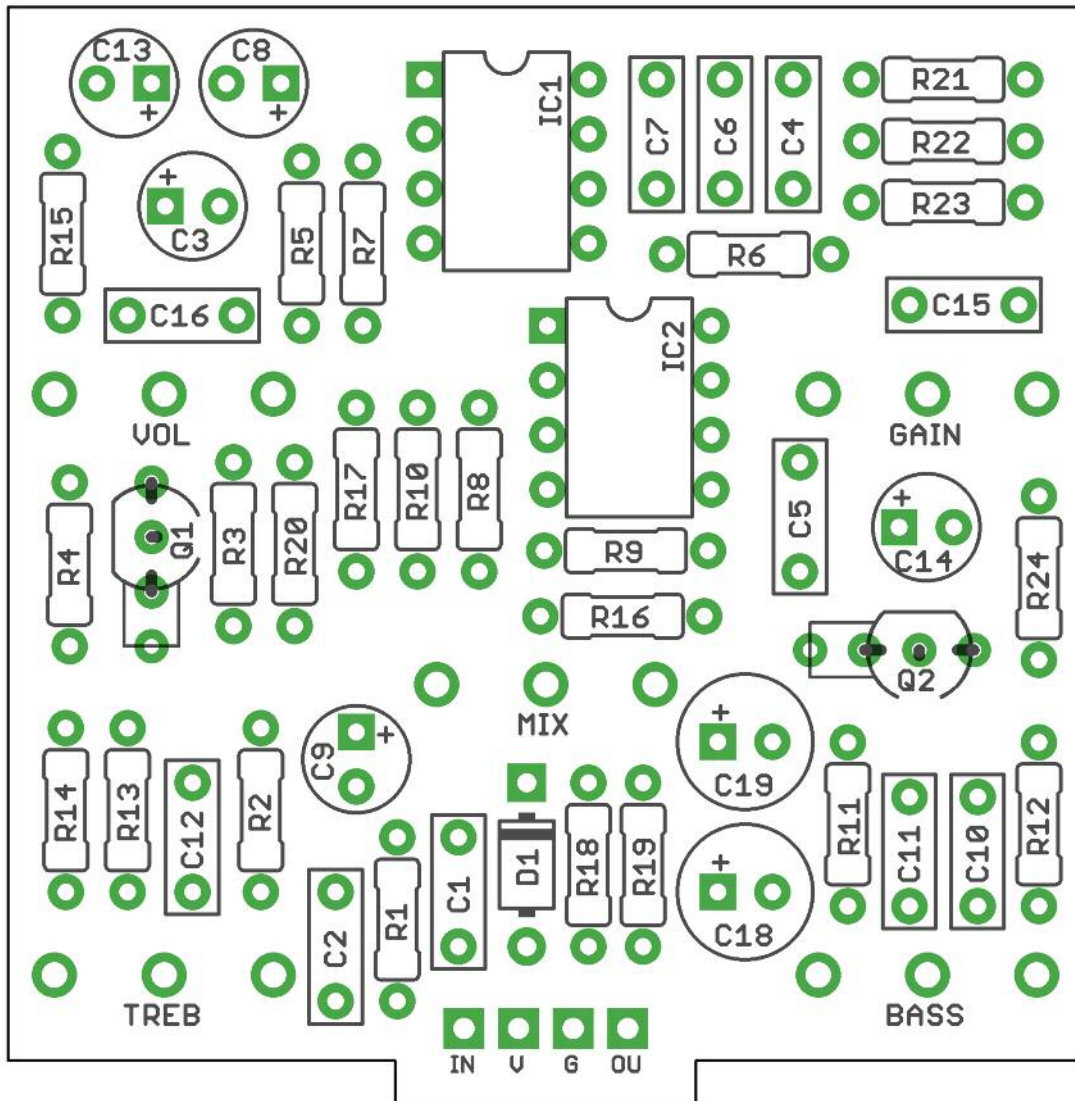
D1 1N5817  
 Q1-2 2SC1815\*\*  
 IC1 4558  
 BASS 100KB  
 GAIN 500KA  
 MIX 20KW  
 TREB 250KB  
 VOL 100KB

\*np = non-polarised

\*\*There are extra pads on the board to take other medium-gain BJTs such as 2N3904, 2N5088 etc. See page 5. 2SC1815 have a different pinout to the usual EBC so need to mount using the extra pad. The cover image shows 2SC1815 in the correct position







PCB layout ©2025 Pedal Parts Ltd.

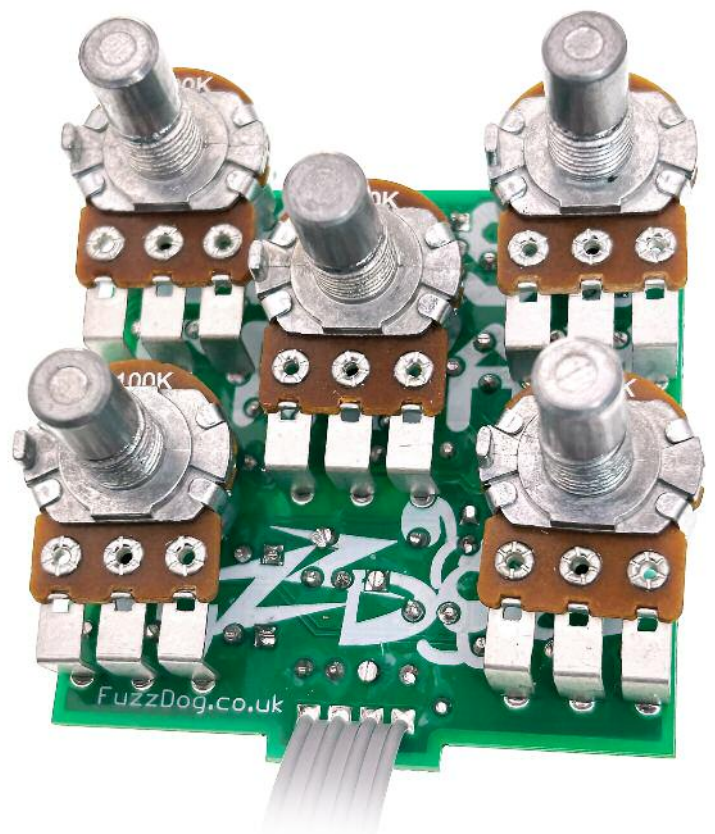
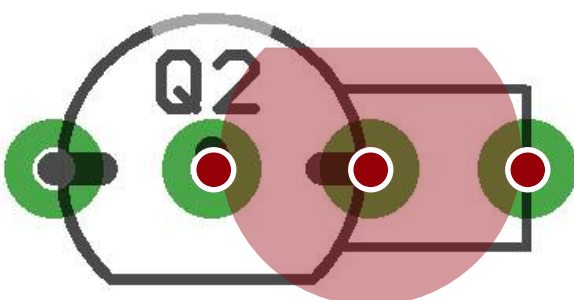
Snap the small metal tag off the pots so they can be mounted flush in the box.

You should solder all other board-mounted components before you solder the pot. Once they're in place you'll have no access to much of the board.

## Transistors

Standard EBC pinouts (2N3904, 2N5088) mount as per the outline on the PCB.

2SC1815 mount as shown below.



# Drilling template

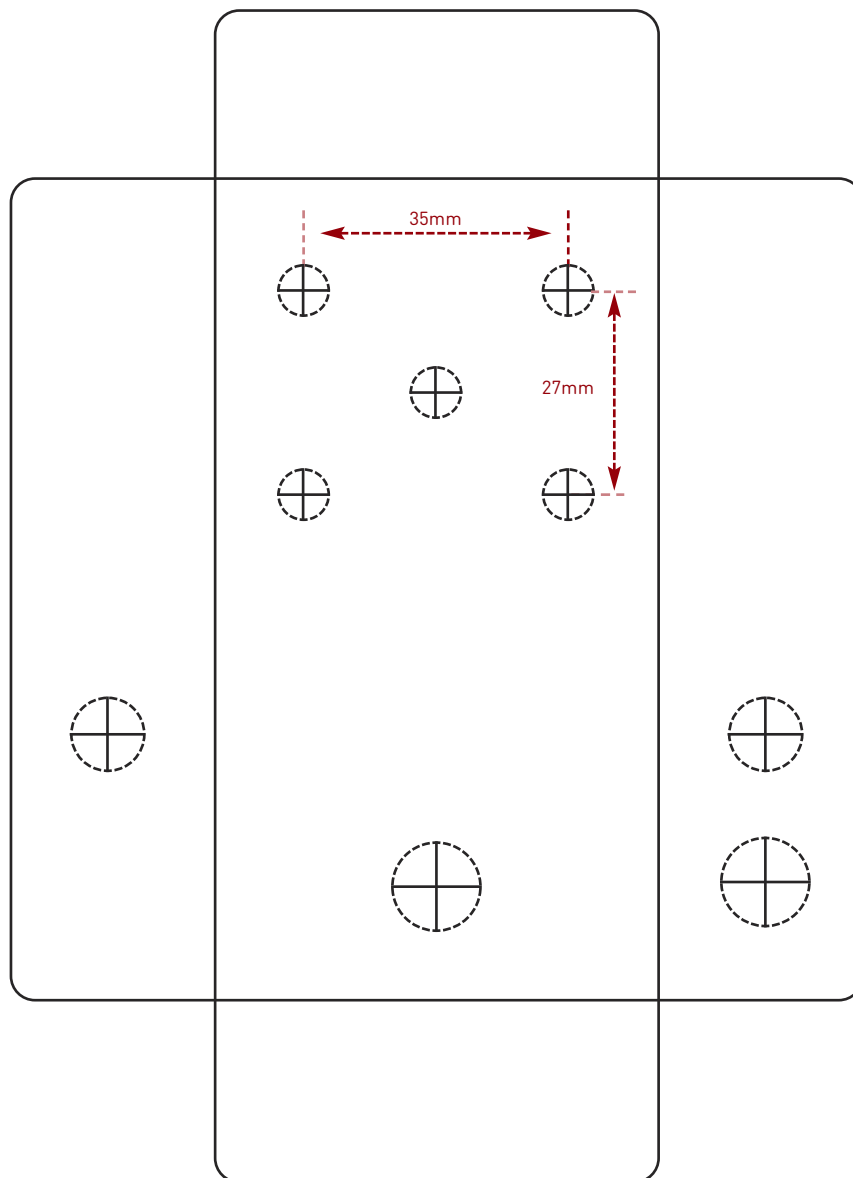
**Hammond 1590B - 60 x 111 x 31mm**

Drill sizes listed are minimum.

It's a good idea to add 1mm to anything mounted on the PCB that'll poke through the front of the enclosure.

Drill sizes:

Pots	7mm
Jacks	10mm
Footswitch	12mm
DC Socket	12mm
Toggle switches	6mm



This template is a rough guide only. You should ensure correct marking of your enclosure before drilling. You use this template at your own risk.

Pedal Parts Ltd can accept no responsibility for incorrect drilling of enclosures.

FuzzDog.co.uk