

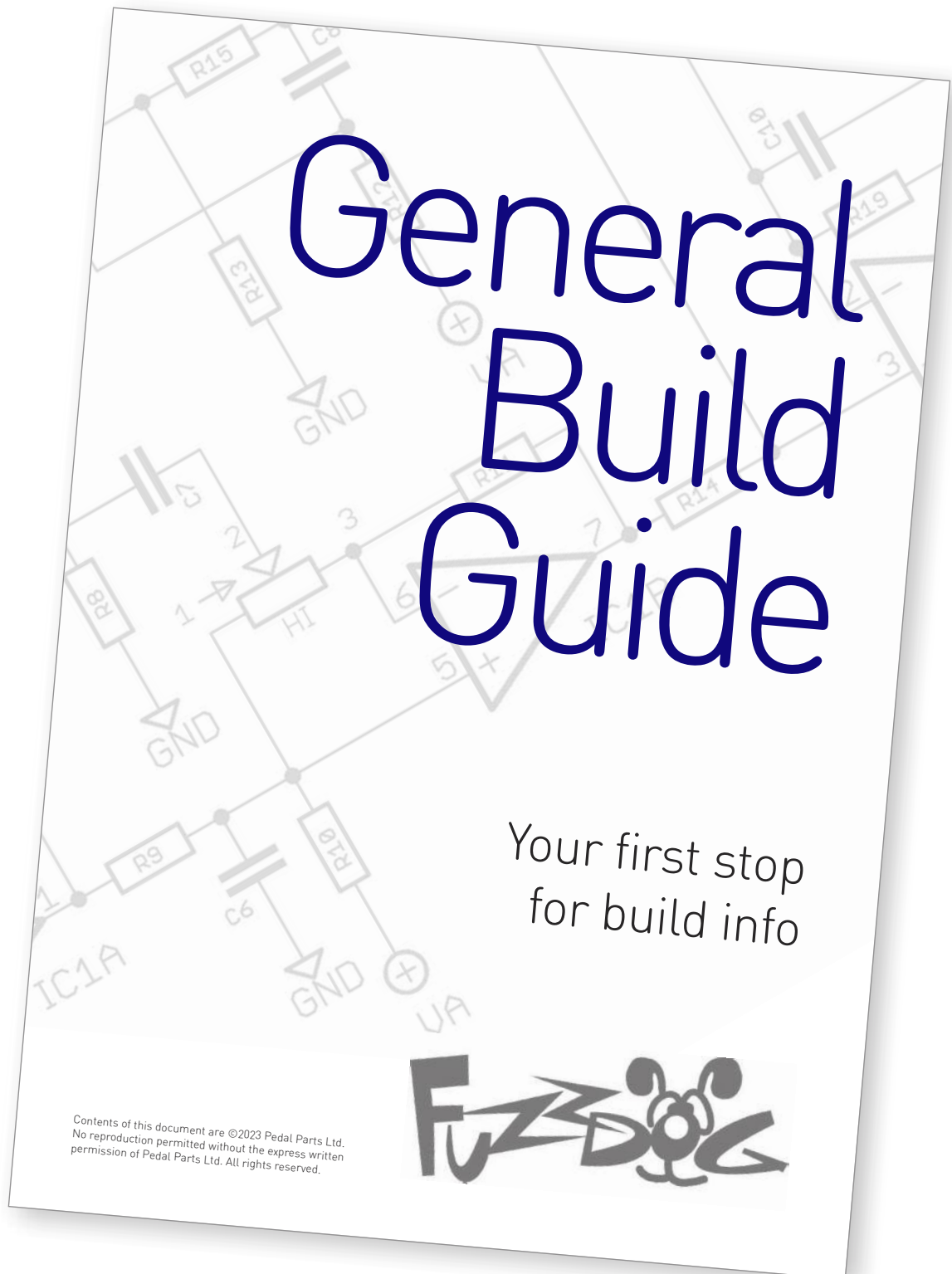
Axis Fuzz

Classic silicon fuzz

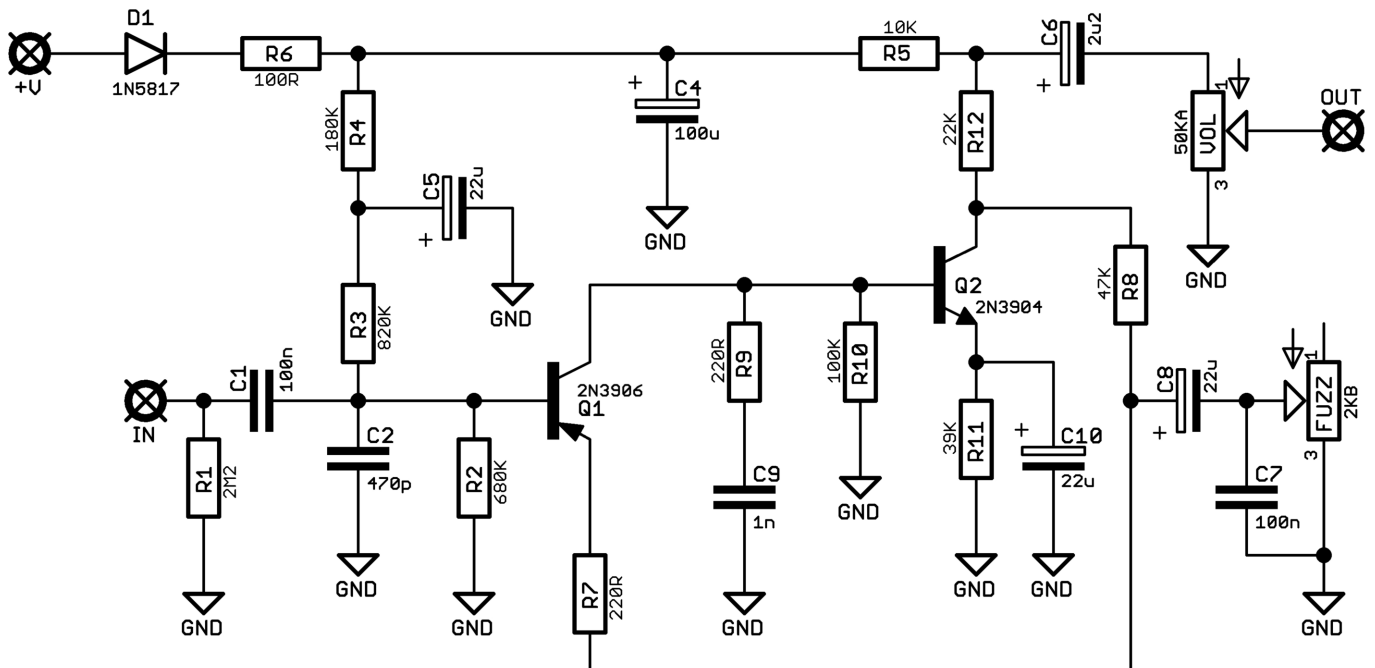


Before you dig in, ensure you download and read the **General Build Guide**.

It contains all the information you need for a successful outcome.



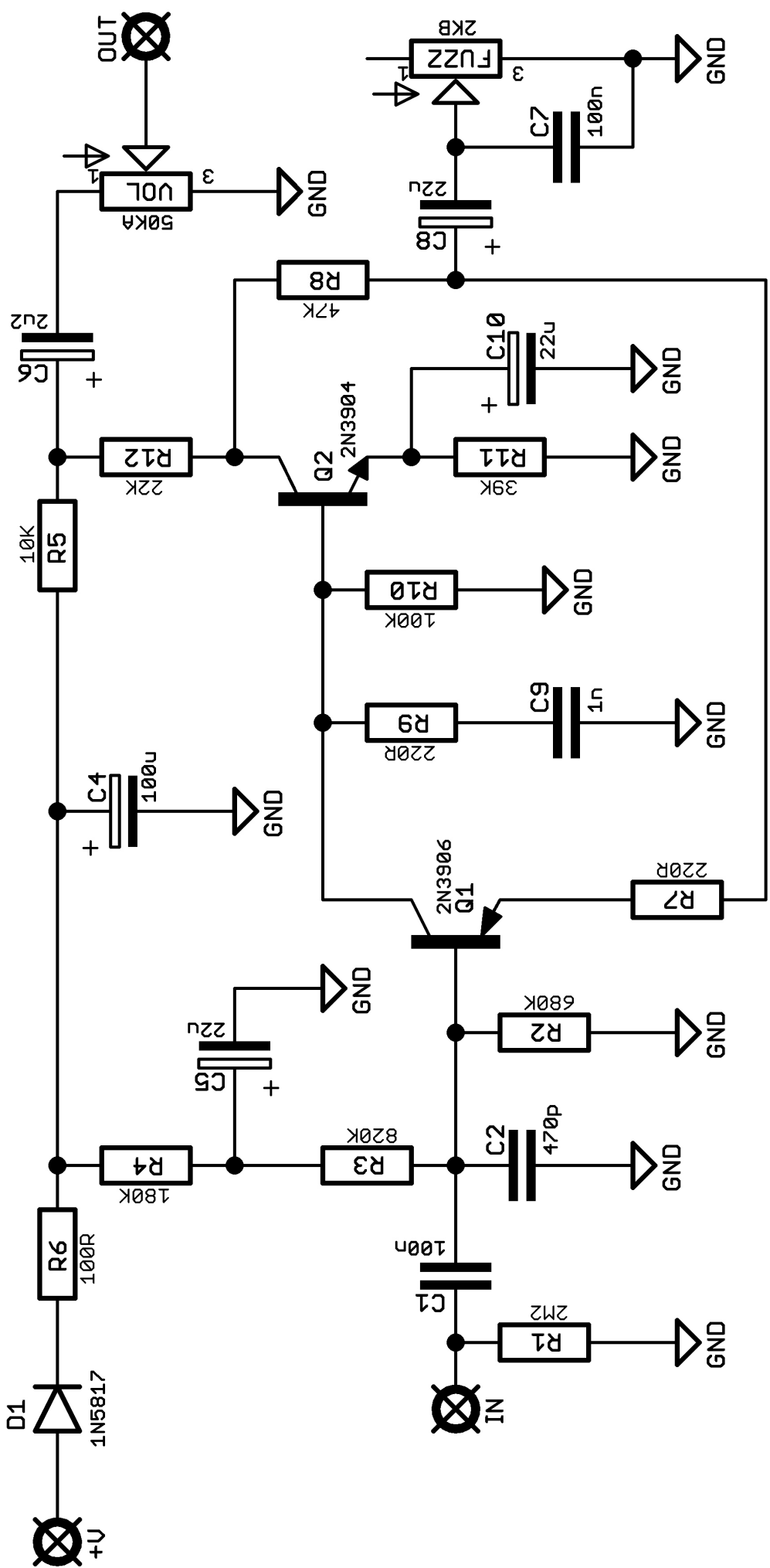
Schematic + BOM

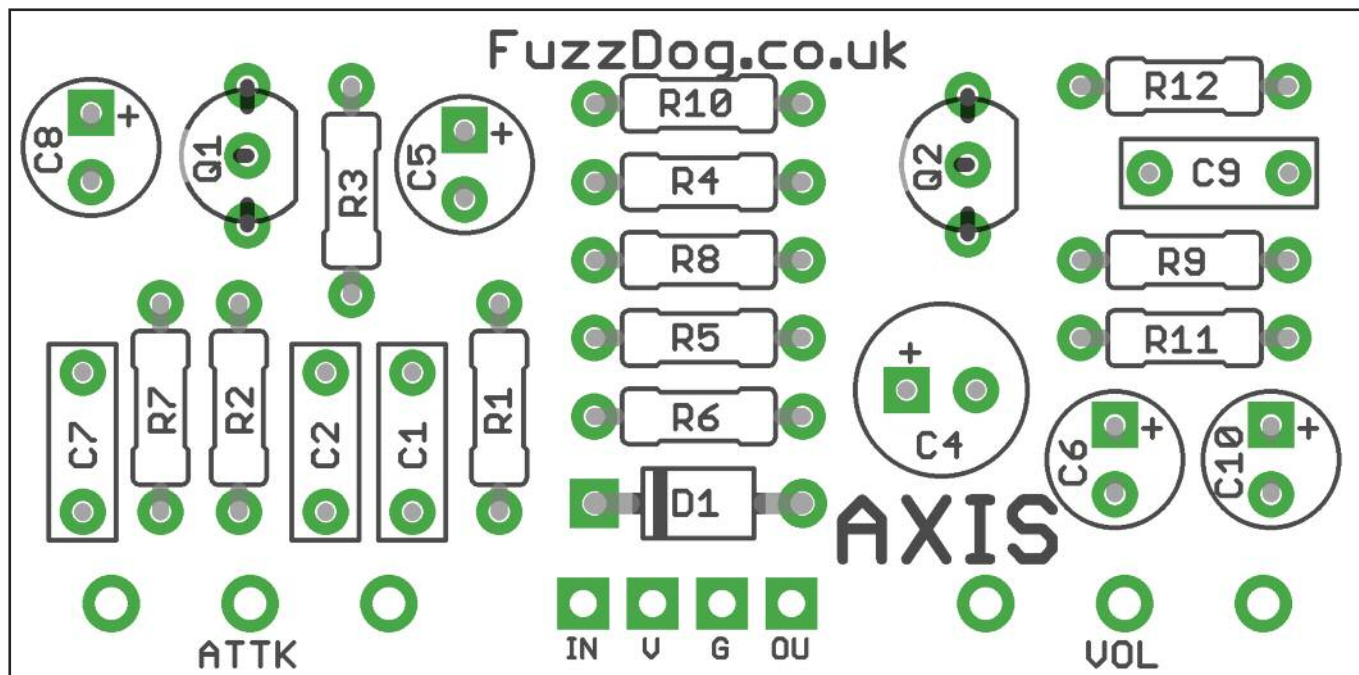


R1 2M2
R2 680K
R3 820K
R4 180K
R5 10K
R6 100R
R7 220R
R8 47K
R9 220R
R10 100K
R11 39K
R12 22K

C1 100n
C2 470p
C4 100u elec
C5 22u elec
C6 2u2 elec
C7 100n
C8 22u elec
C9 1n
C10 22u elec

D1 1N5817
Q1 2N3906
Q2 2N3904
FUZZ 2KB
VOL 50KA

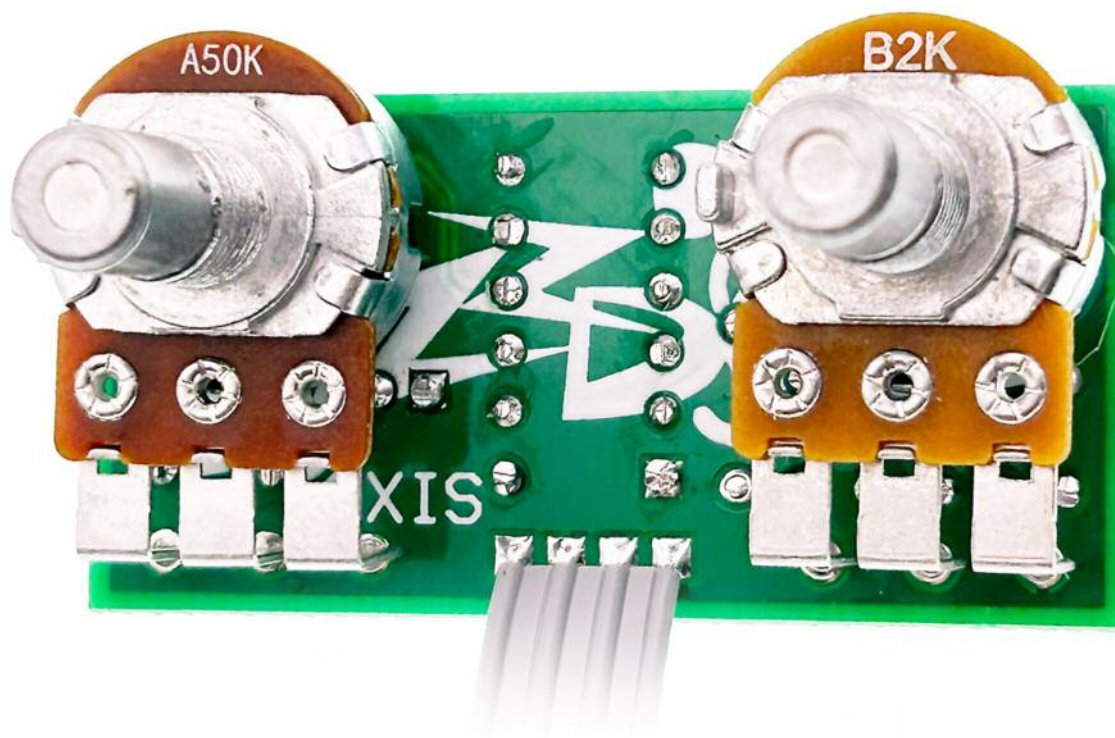




Snap the small metal tag off the pots so they can be mounted flush in the box.

You should solder all other board-mounted components before you solder the pots.

Once they're in place you'll have no access to much of the board.



Drilling template

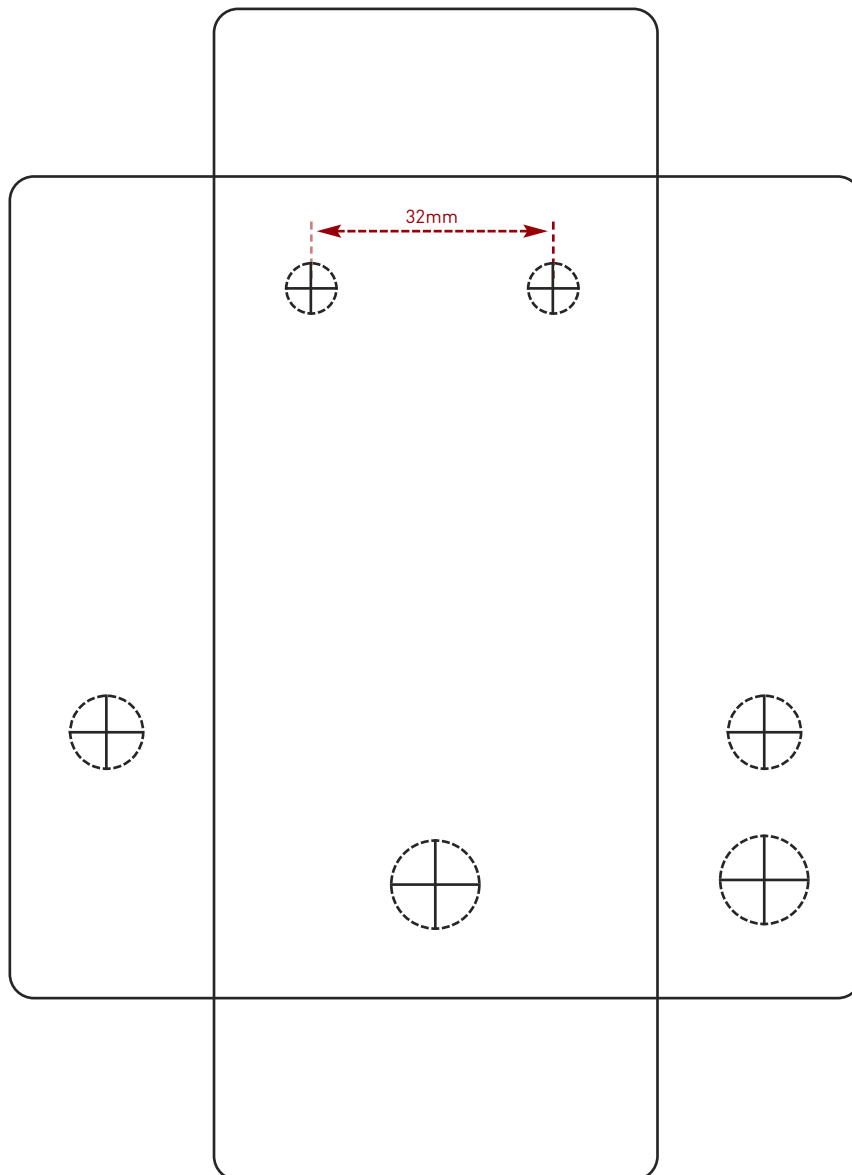
Hammond 1590B - 60 x 111 x 31mm

Drill sizes listed are minimum.

It's a good idea to add 1mm to anything mounted on the PCB that'll poke through the front of the enclosure.

Drill sizes:

Pots	7mm
Jacks	10mm
Footswitch	12mm
DC Socket	12mm
Toggle switches	6mm
Rotary switches	10mm



This template is a rough guide only. You should ensure correct marking of your enclosure before drilling. You use this template at your own risk.

Pedal Parts Ltd can accept no responsibility for incorrect drilling of enclosures.

FuzzDog.co.uk