

AcouPre

Acoustic-focussed preamp
that works across the board

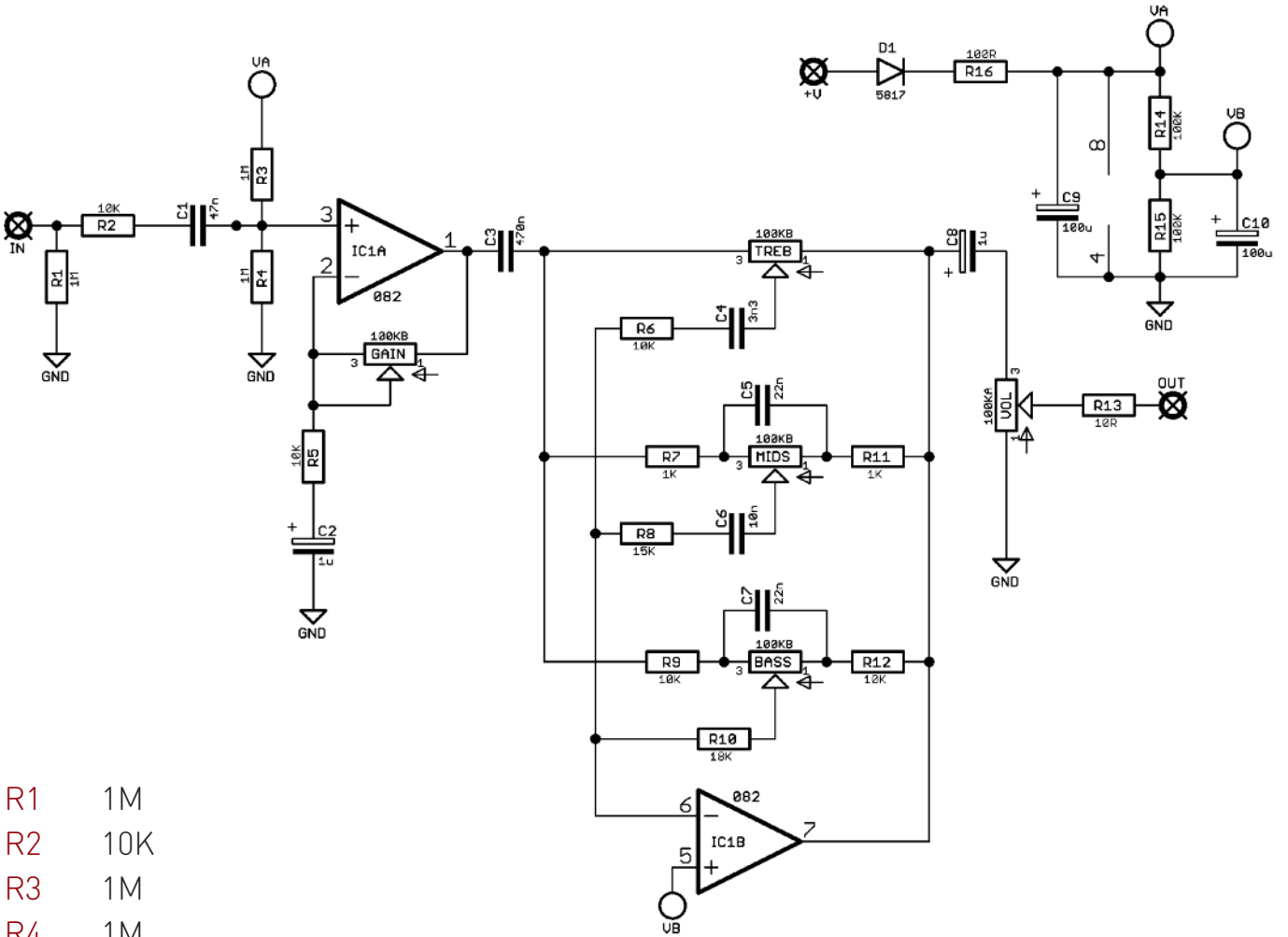


Before you dig in, ensure you download and read the **General Build Guide**.

It contains all the information you need for a successful outcome.



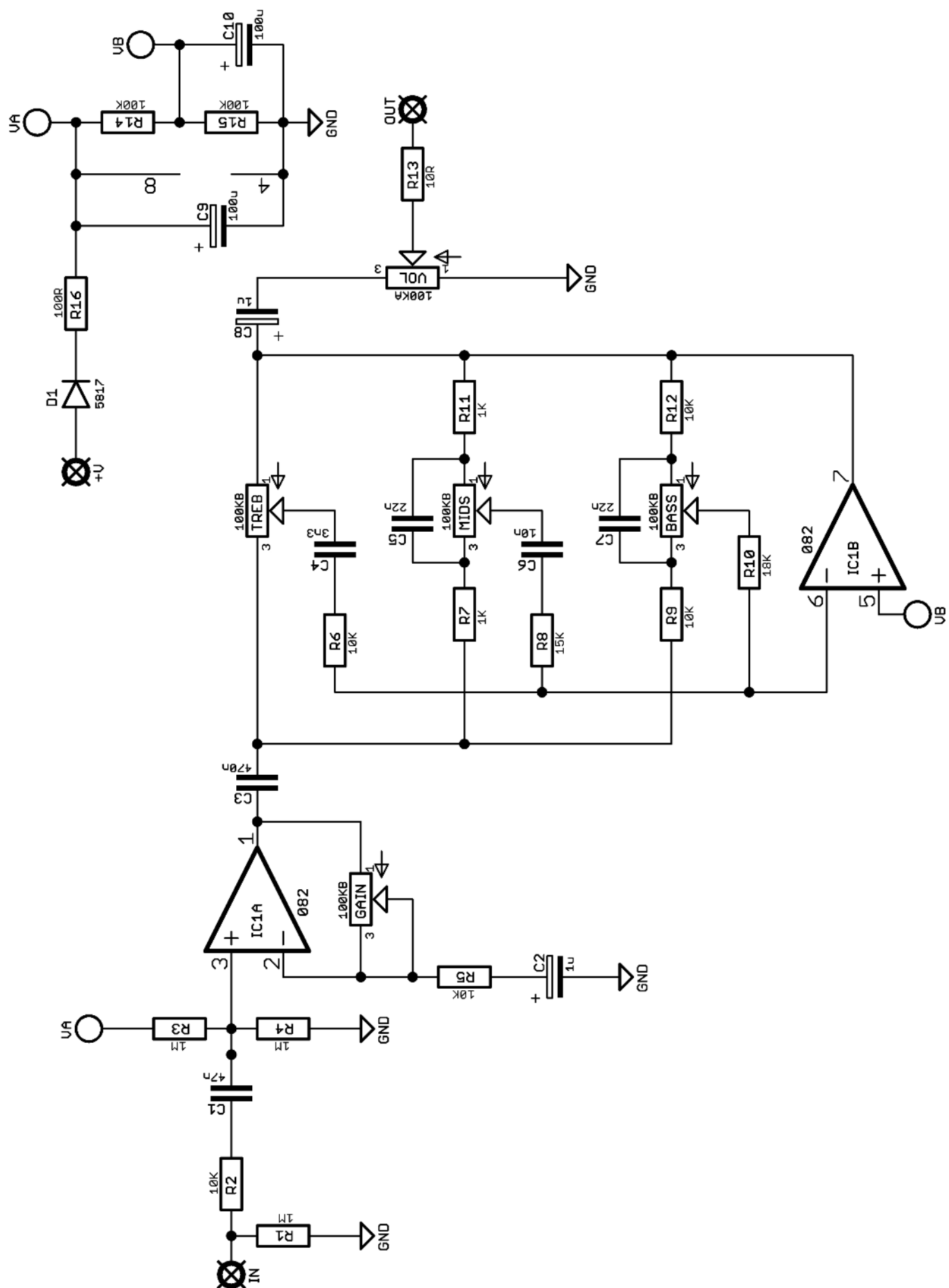
Schematic + BOM



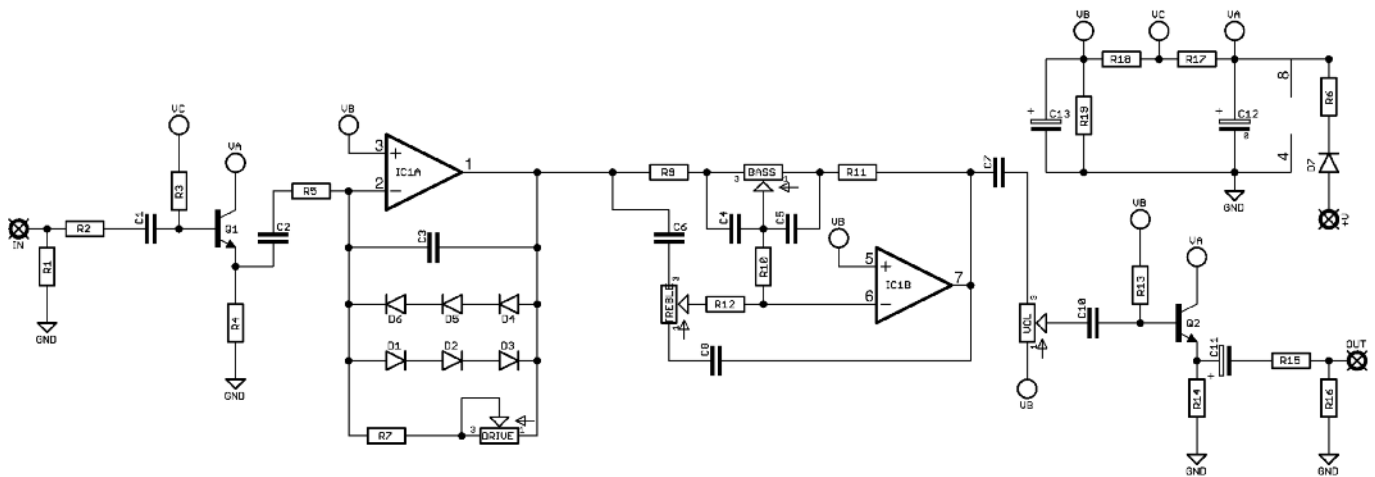
R1	1M
R2	10K
R3	1M
R4	1M
R5	10K
R6	10K
R7	1K
R8	15K
R9	10K
R10	18K
R11	1K
R12	10K
R13	10R
R14	100K
R15	100K
R16	100R

C1	47n
C2	1u elec
C3	470n
C4	3n3
C5	22n
C6	10n
C7	22n
C8	1u elec
C9	100u elec
C10	100u elec

D1	1N5817
IC1	TL082
BASS	100KB
GAIN	100KB
MID	100KB
TREB	100KB
VOL	100KA



Schematic + BOM - RC (clean)



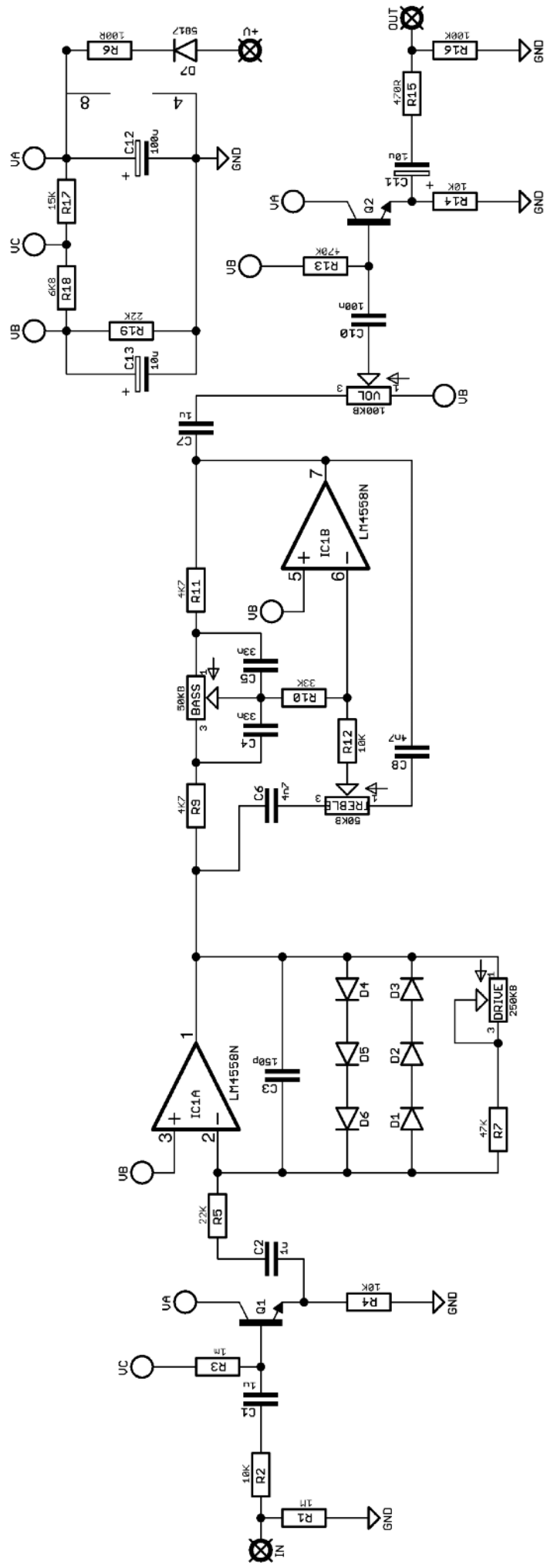
R1	1M	C1	470n*	D1-6	1N4001** (Empty)
R2	10K	C2	1u	D7	1N5817
R3	1M	C3	150p	D8	Empty
R4	10K	C4	33n		
R5	22K	C5	33n	Q1-2	2N5088**
R6	100R	C6	4n7 (10n)		
R7	47K (22K)	C7	1u	IC1	4888
R8	Jumper	C8	4n7 (10n)		
R9	4K7	C9	Empty	BASS	50KB
R10	33K	C10	100n	GAIN	250KB
R11	4K7	C11	10u elec	TREB	50KB
R12	10K	C12	100u elec	VOL	100KB
R13	470K	C13	10u elec		
R14	10K				
R15	470R				
R16	100K				
R17	15K				
R18	6K8				
R19	22K				

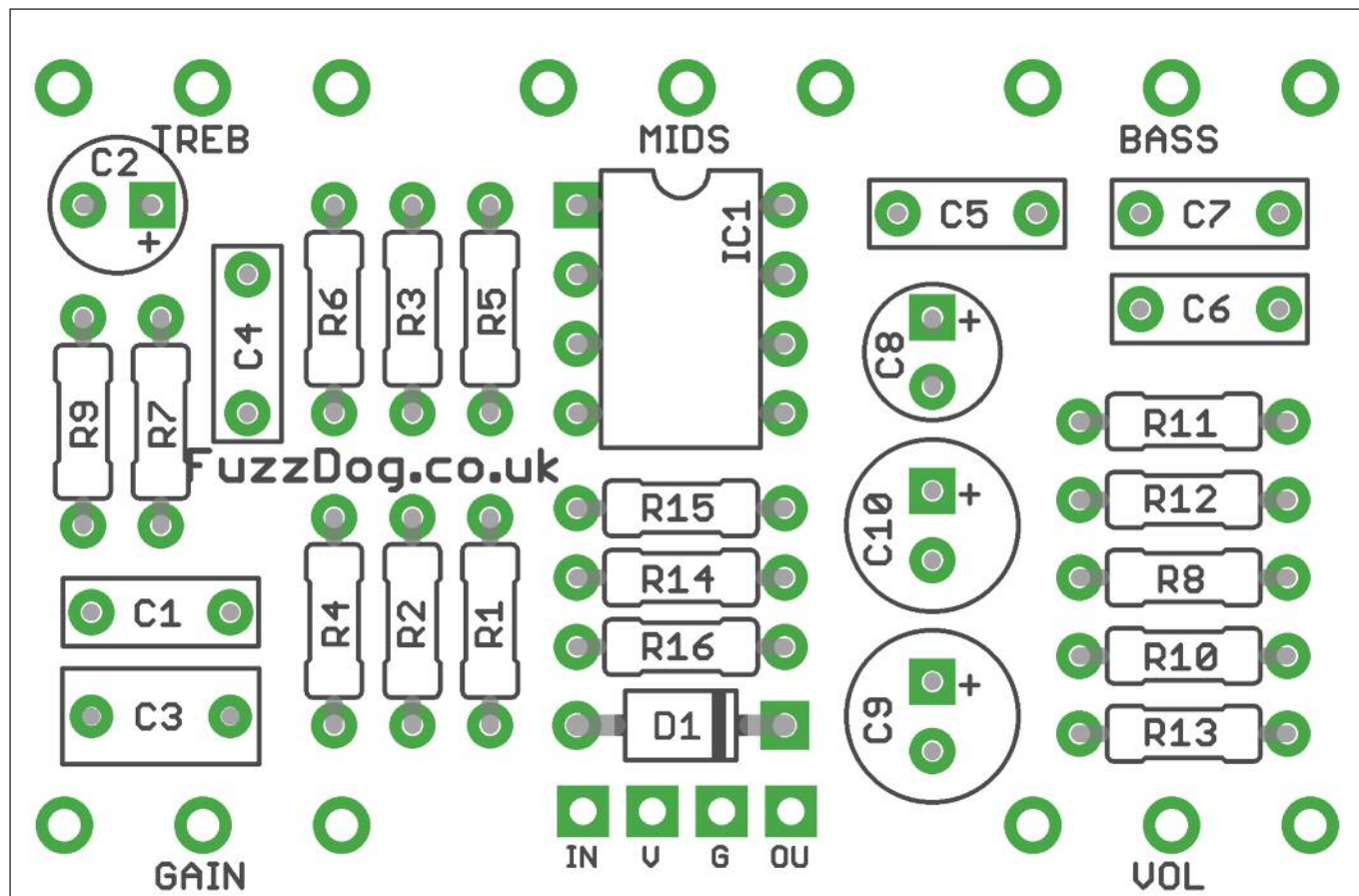
Substitutions in blue are for the bass version.

*1uf in the original but shucks, we didn't leave enough space to fit that in comfortably. You'll notice absolutely no difference with a 470nf. The original bass version actually drops this to 100n, so go figure.

**These should mount vertically as shown on the cover pic.

***2SC1815 in the original, but we've gone for a layout with standard EBC pinout. 2N5088 will give you exactly the same results. These need to be reversed compared to the PCB silkscreen outlines. Don't ask. Maybe it was windy that day...

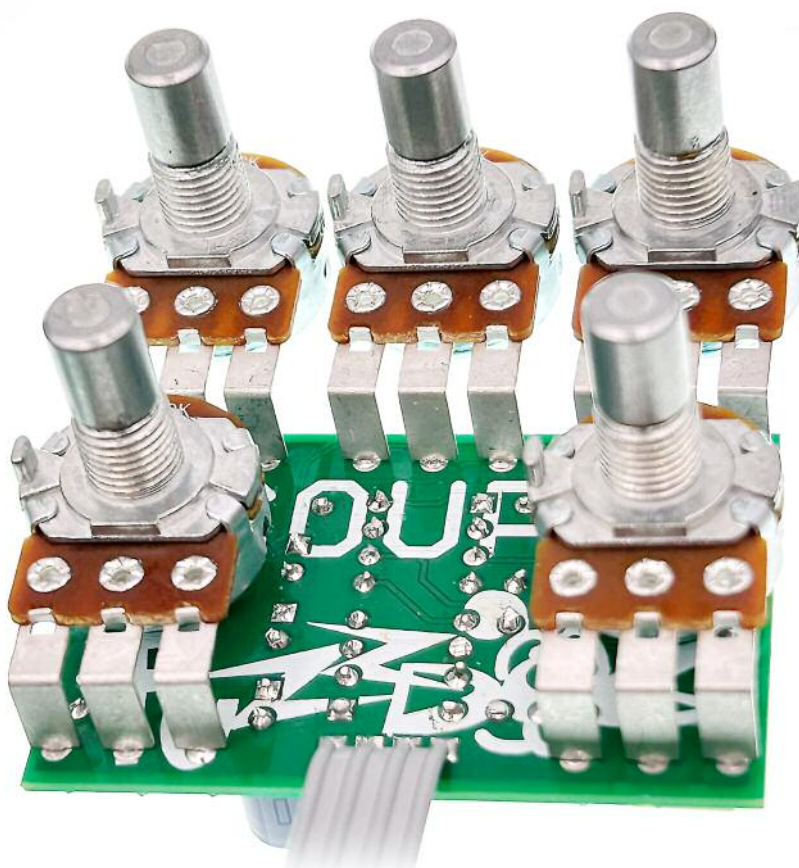




Snap the small metal tags off the pots so they can be mounted flush in the box.

You should solder all other board-mounted components before you solder the pots.

Once they're in place you'll have no access to much of the board.



Drilling template

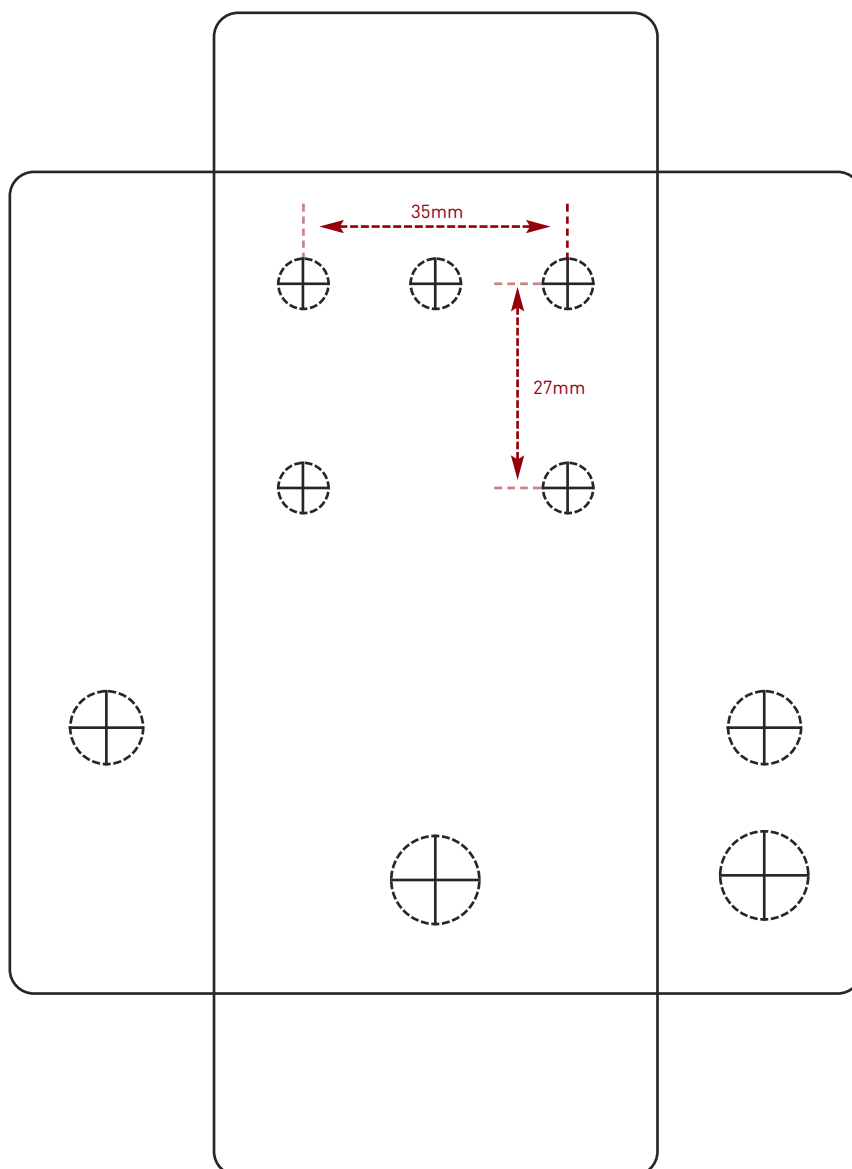
Hammond 1590B - 60 x 111 x 31mm

Drill sizes listed are minimum.

It's a good idea to add 1mm to anything mounted on the PCB that'll poke through the front of the enclosure.

Drill sizes:

Pots	7mm
Jacks	10mm
Footswitch	12mm
DC Socket	12mm
Toggle switches	6mm
Rotary switches	10mm



This template is a rough guide only. You should ensure correct marking of your enclosure before drilling. You use this template at your own risk.

Pedal Parts Ltd can accept no responsibility for incorrect drilling of enclosures.

FuzzDog.co.uk