

74-Combo

70's Marshall
18 watt in-a-box

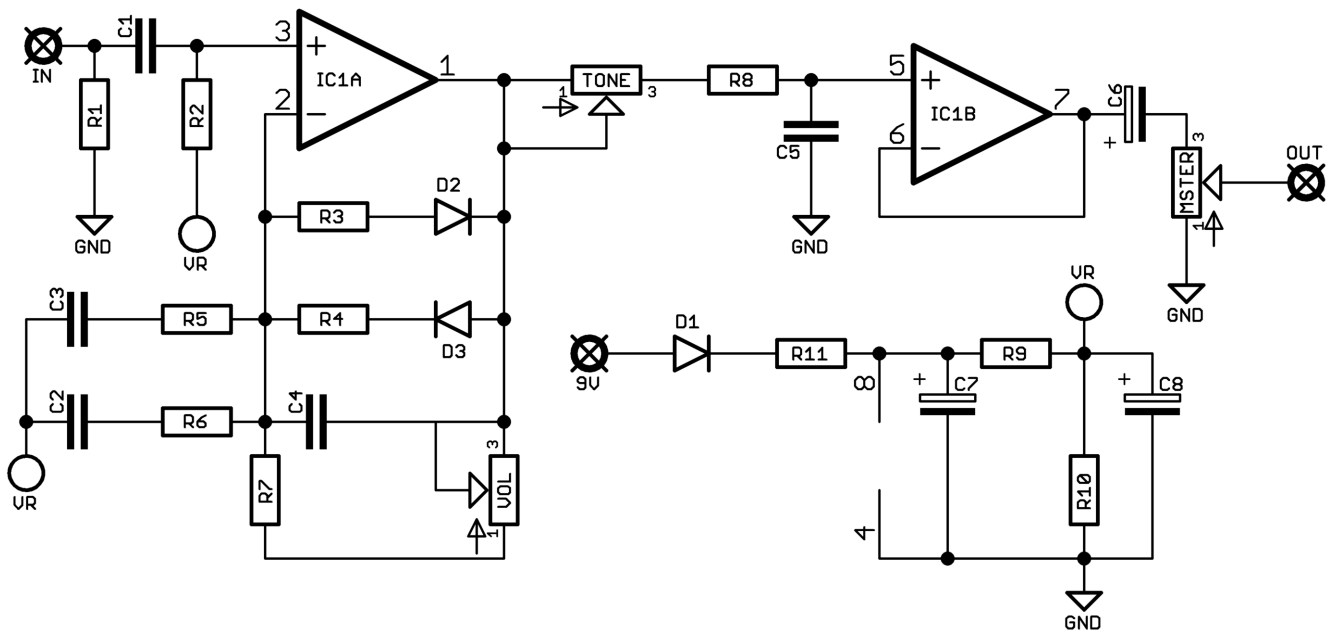


Before you dig in, ensure you download and read the **General Build Guide**.

It contains all the information you need for a successful outcome.

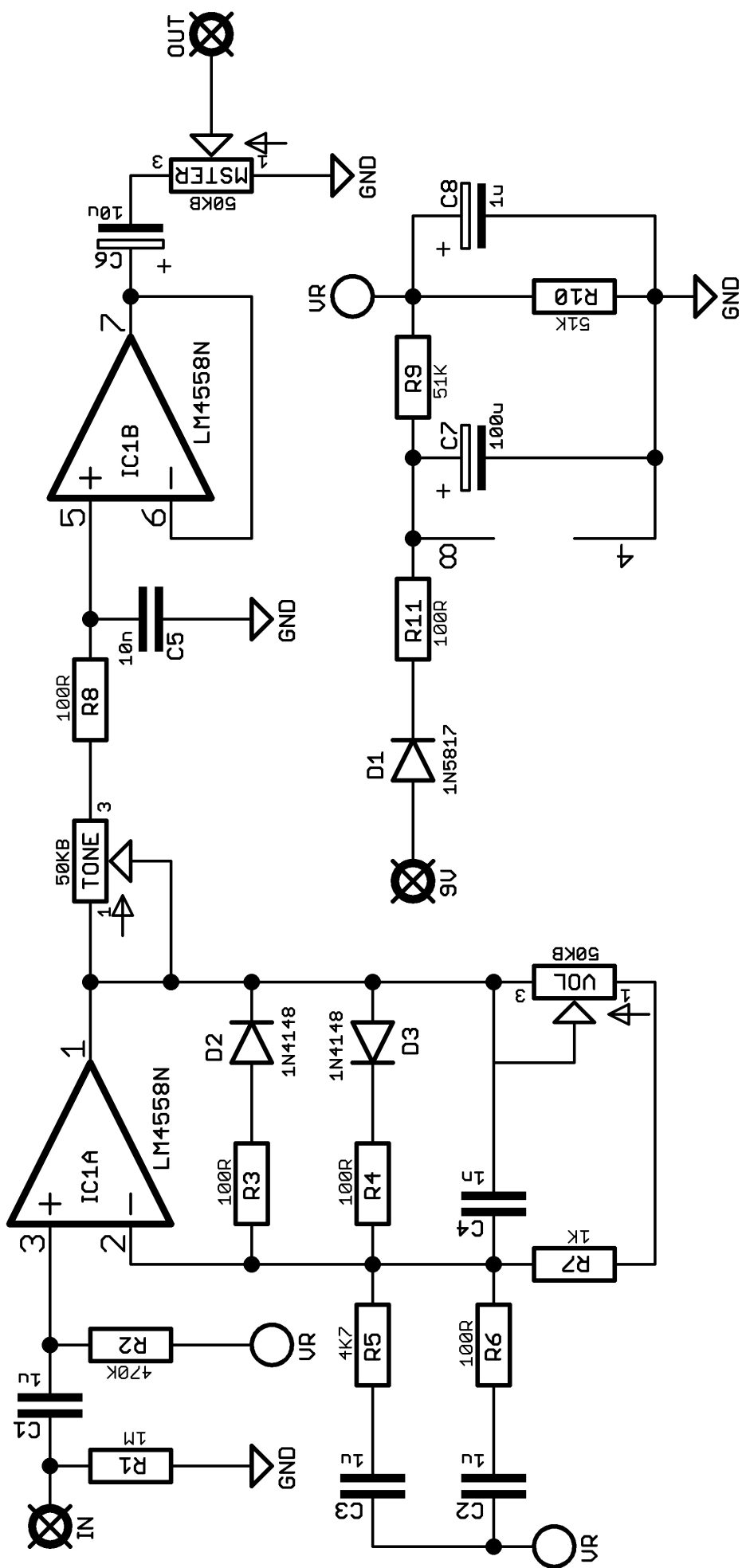


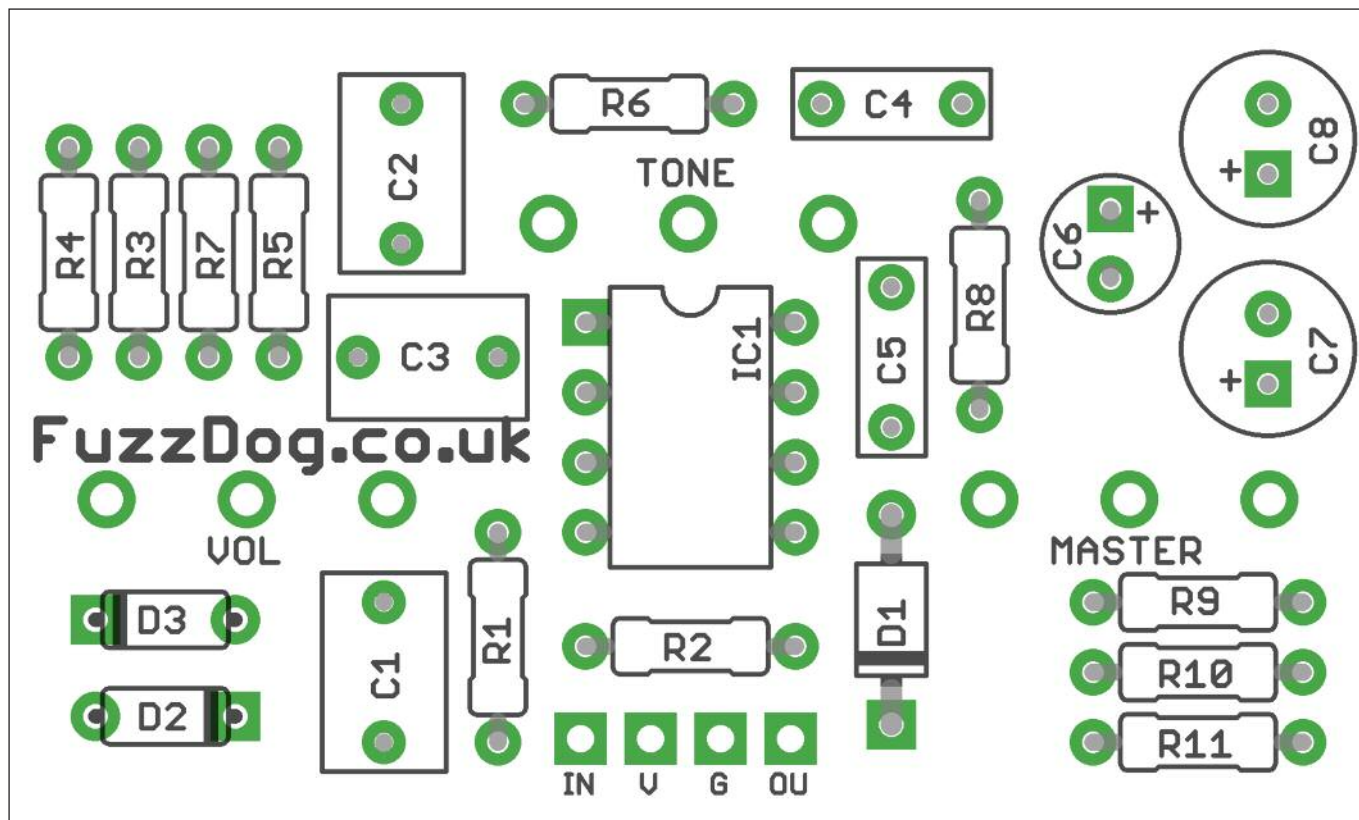
Schematic + BOM



| | | | | | |
|-----|------|----|-----------|------|--------|
| R1 | 1M | C1 | 1u | D1 | 1N5817 |
| R2 | 470K | C2 | 1u | D2-3 | 1N4148 |
| R3 | 100R | C3 | 1u | IC1 | 4558 |
| R4 | 100R | C4 | 1n | MAST | 50KB |
| R5 | 4K7 | C5 | 10n | TONE | 50KB |
| R6 | 100R | C6 | 10u elec | VOL | 50KB |
| R7 | 1K | C7 | 10u elec* | | |
| R8 | 100R | C8 | 1u elec | | |
| R9 | 51K | | | | |
| R10 | 51K | | | | |
| R10 | 100R | | | | |

*Test build has 100u for C7, but we know y'all like to stick to original specs so go with 10u if you want.

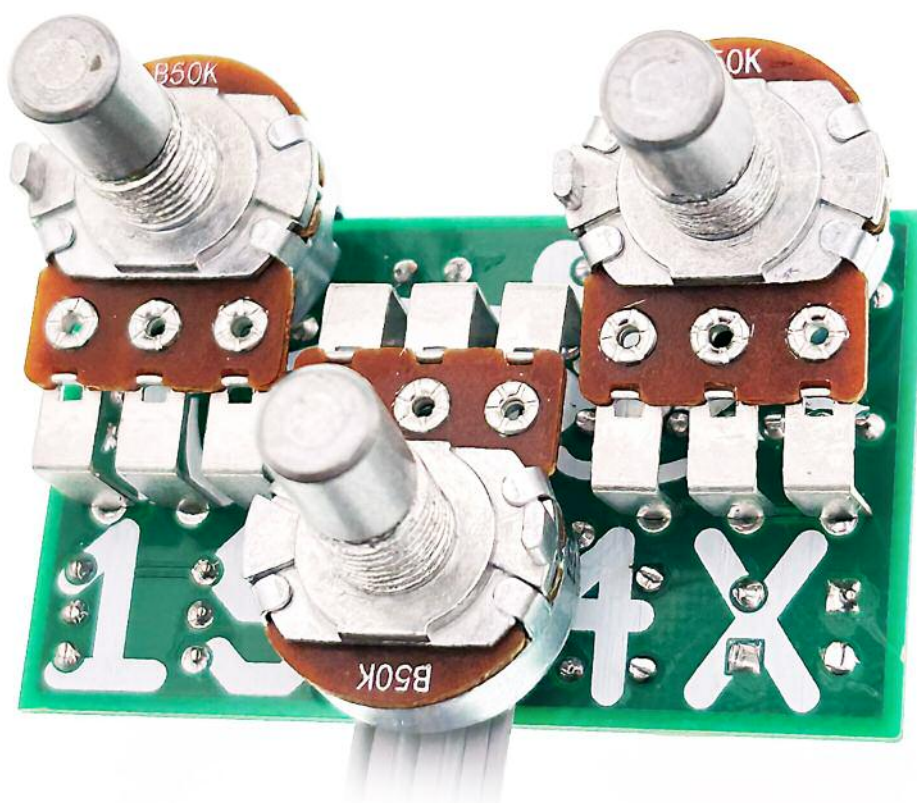




Snap the small metal tag off the pots so they can be mounted flush in the box.

You should solder all other board-mounted components before you solder the pots.

Once they're in place you'll have no access to much of the board.



Drilling template

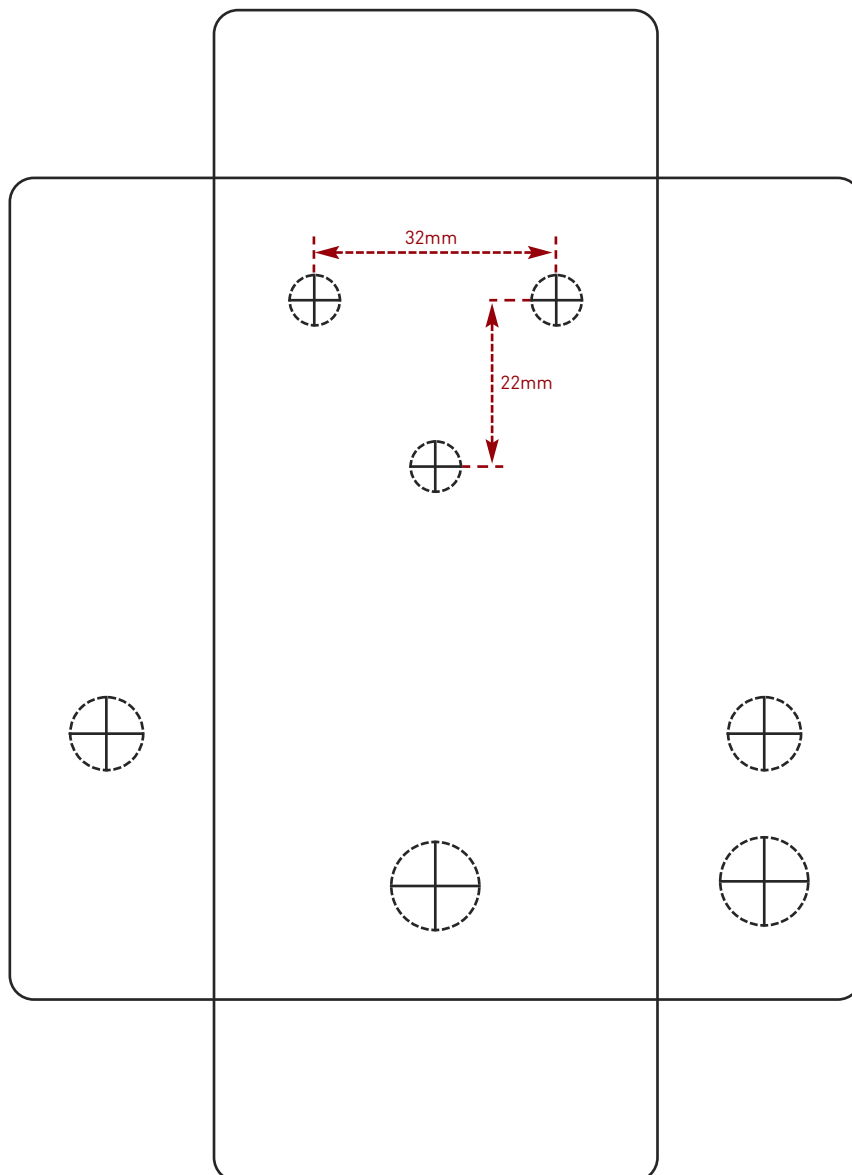
Hammond 1590B - 60 x 111 x 31mm

Drill sizes listed are minimum.

It's a good idea to add 1mm to anything mounted on the PCB that'll poke through the front of the enclosure.

Drill sizes:

| | |
|------------|------|
| Pots | 7mm |
| Jacks | 10mm |
| Footswitch | 12mm |
| DC Socket | 12mm |



This template is a rough guide only. You should ensure correct marking of your enclosure before drilling. You use this template at your own risk.

Pedal Parts Ltd can accept no responsibility for incorrect drilling of enclosures.

FuzzDog.co.uk