

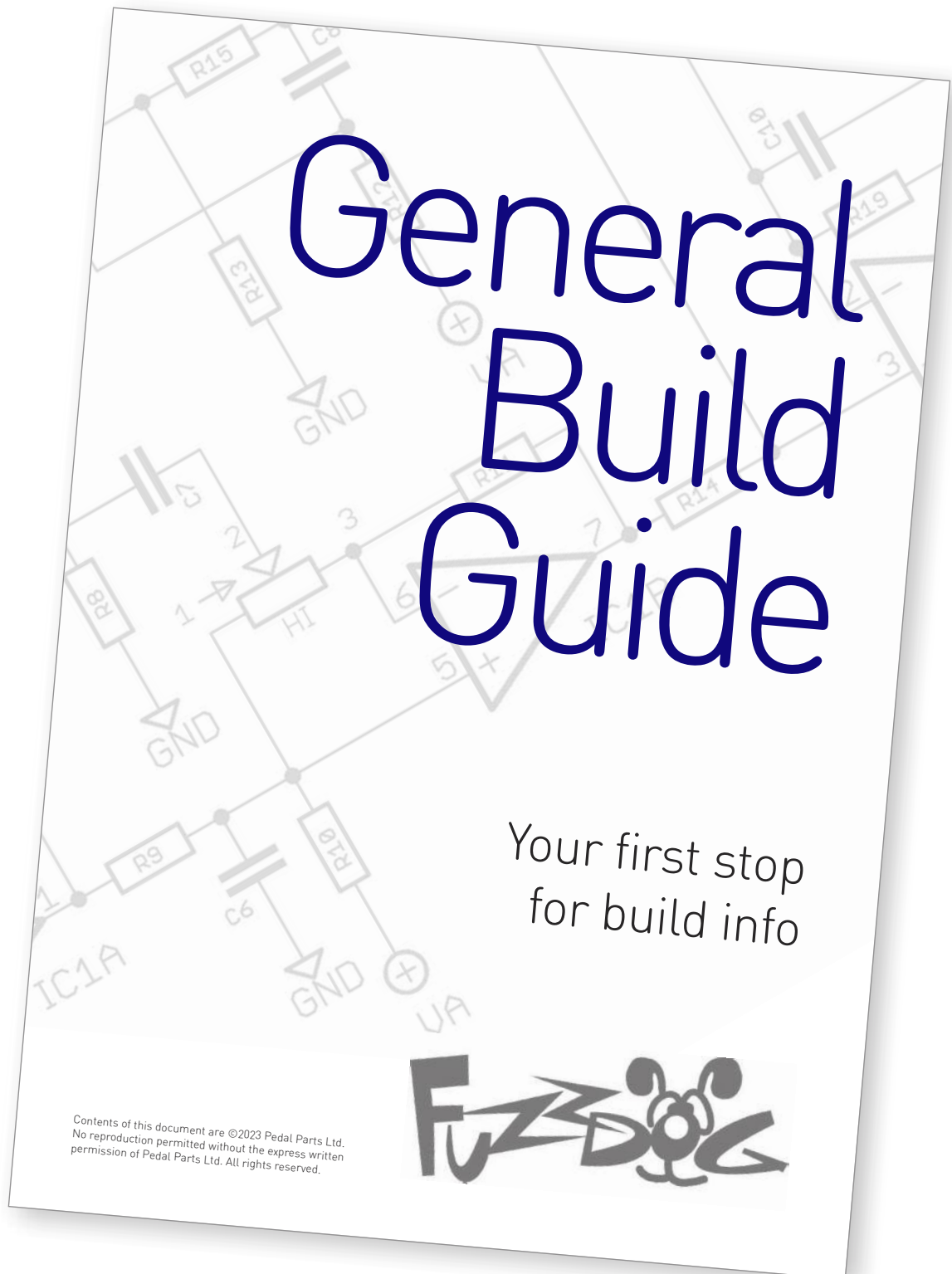
'64 Vox

Fredd Briggs' creation
captures that 60's Vox tone

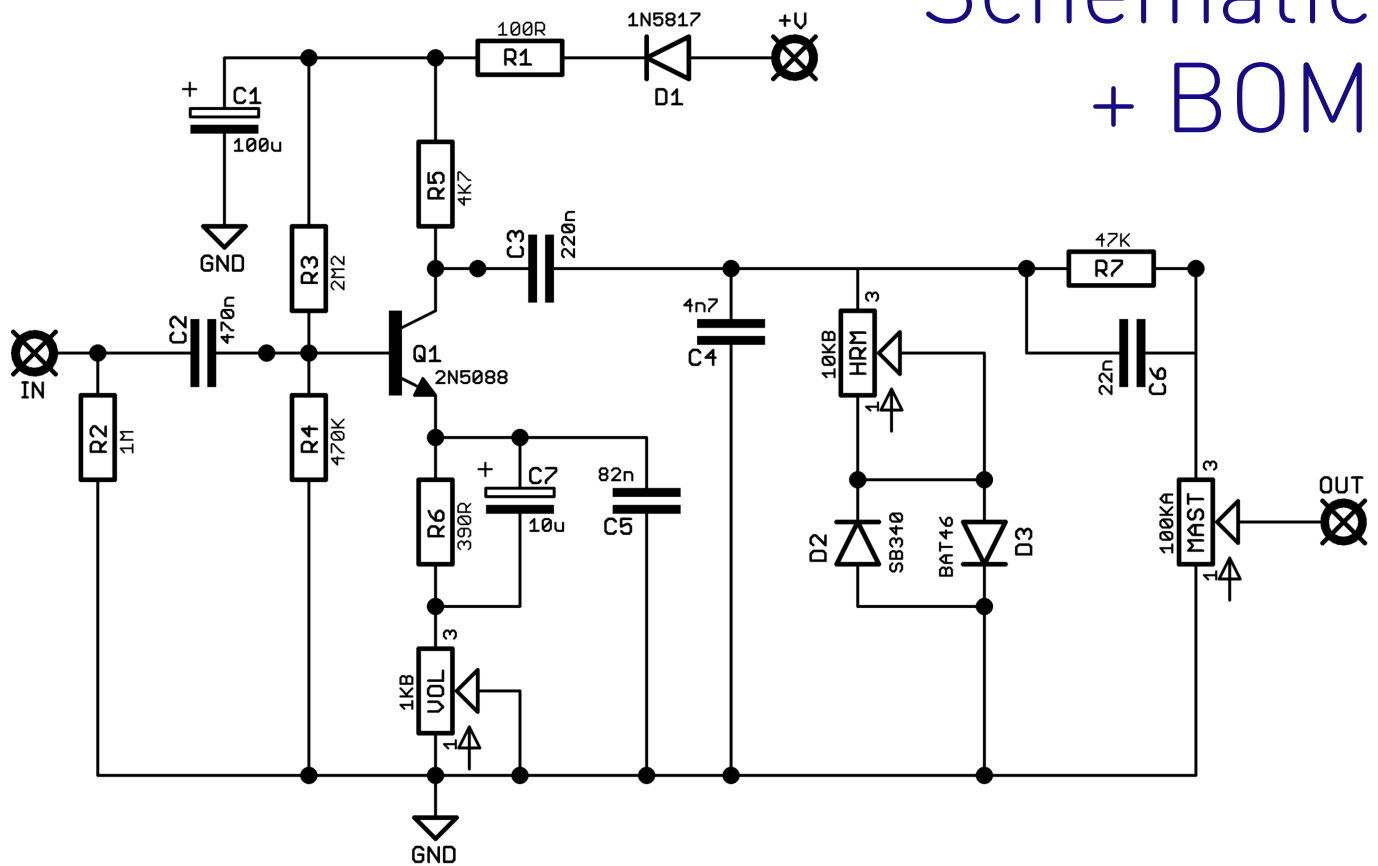


Before you dig in, ensure you download and read the **General Build Guide**.

It contains all the information you need for a successful outcome.



Schematic + BOM

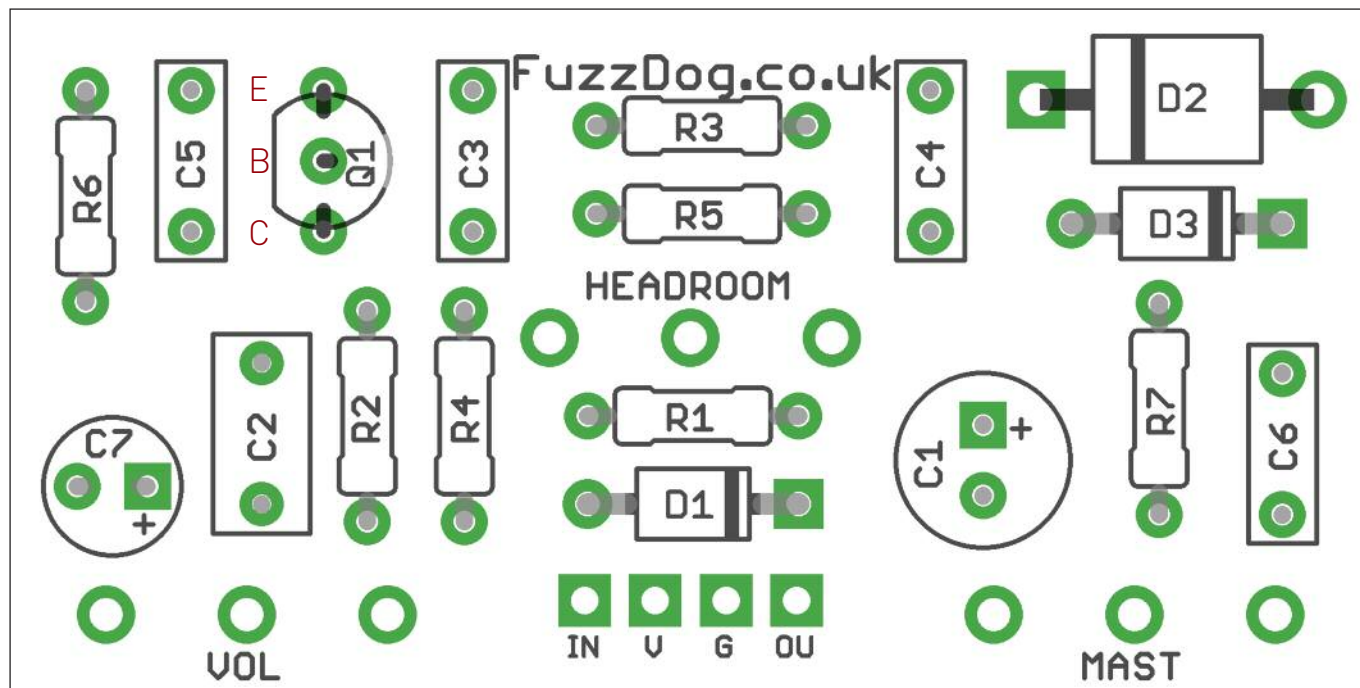


R1 100R
R2 1M
R3 2M2
R4 470K
R5 4K7
R6 390R
R7 47K

C1 100u elec
C2 470n
C3 220n
C4 4n7
C5 82n
C6 22n
C7 10u elec

D1 1N5817
D2 SB340
D3 BAT46
Q1 2N3565 / 2N5088*
HEAD 10KB
VOL 1KB
MAST 100KA

*Original design favoured 2N3565, but there's nothing magical about it. Try any BJT you have - the usual suspects such as 2N3904, 2N5088 etc. See next page regarding pinout.



Snap the small metal tag off the pot so it can be mounted flush in the box.

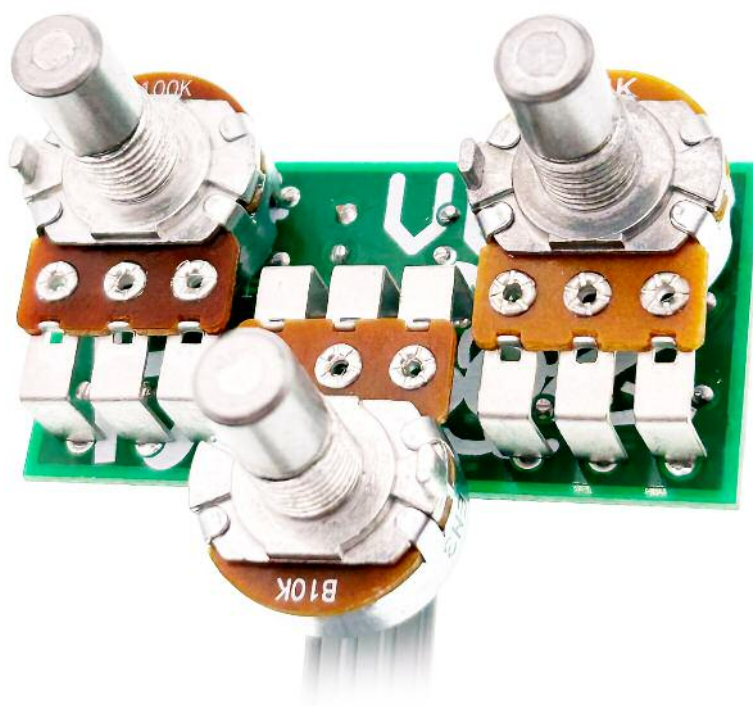
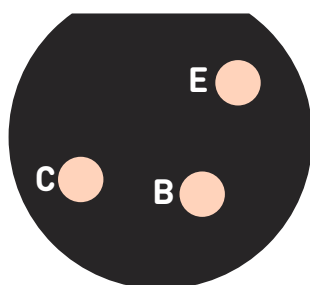
You should solder all other board-mounted components before you solder the pot.

Once it's in place you'll have no access to much of the board.

Q1 Placement

The pads are arranged for standard EBC pinout in a TO-92 case. We stock 2N3565 in TO-106 (like little black pills), which will fit fine but you need to identify the pins.

Here's the view from below:



Drilling template

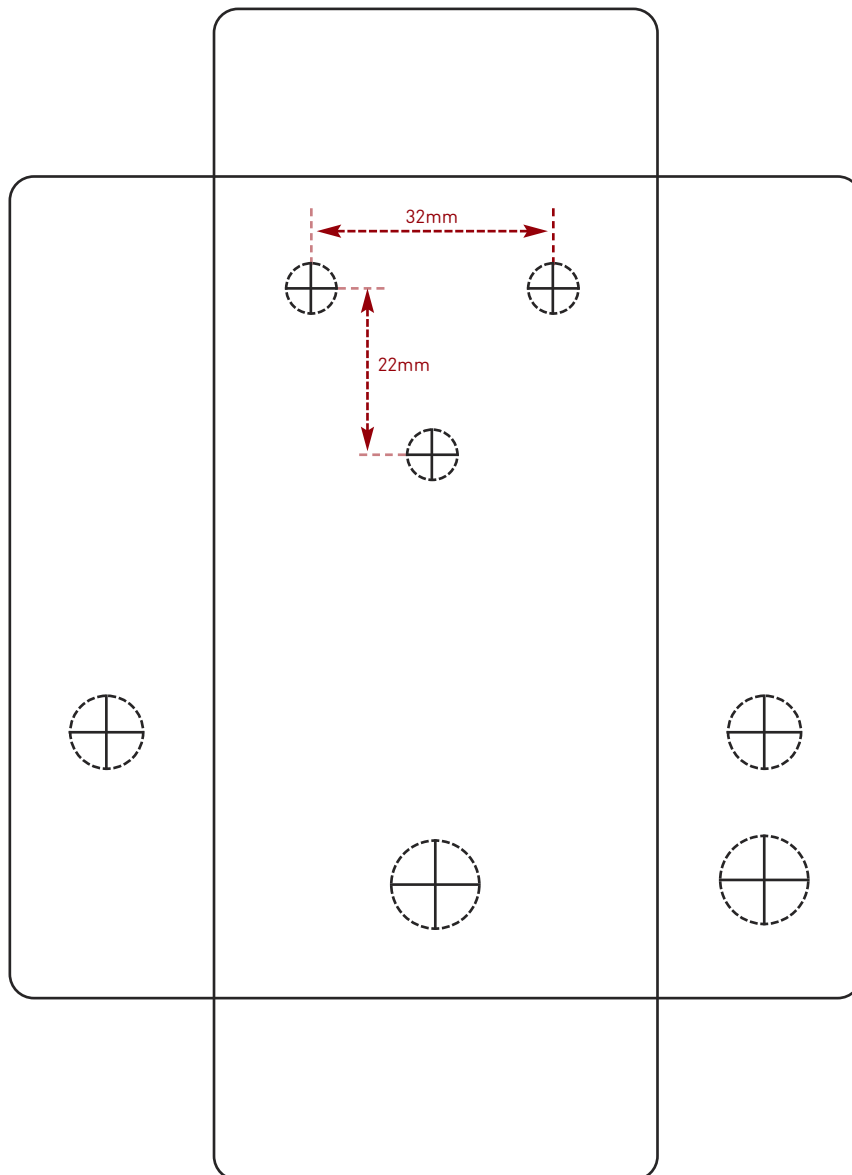
Hammond 1590B - 60 x 111 x 31mm

Drill sizes listed are minimum.

It's a good idea to add 1mm to anything mounted on the PCB that'll poke through the front of the enclosure.

Drill sizes:

Pots	7mm
Jacks	10mm
Footswitch	12mm
DC Socket	12mm
Toggle switches	6mm
Rotary switches	10mm



This template is a rough guide only. You should ensure correct marking of your enclosure before drilling. You use this template at your own risk.

Pedal Parts Ltd can accept no responsibility for incorrect drilling of enclosures.

FuzzDog.co.uk