

5W+

Tricked-out OD-1-based
box of badass

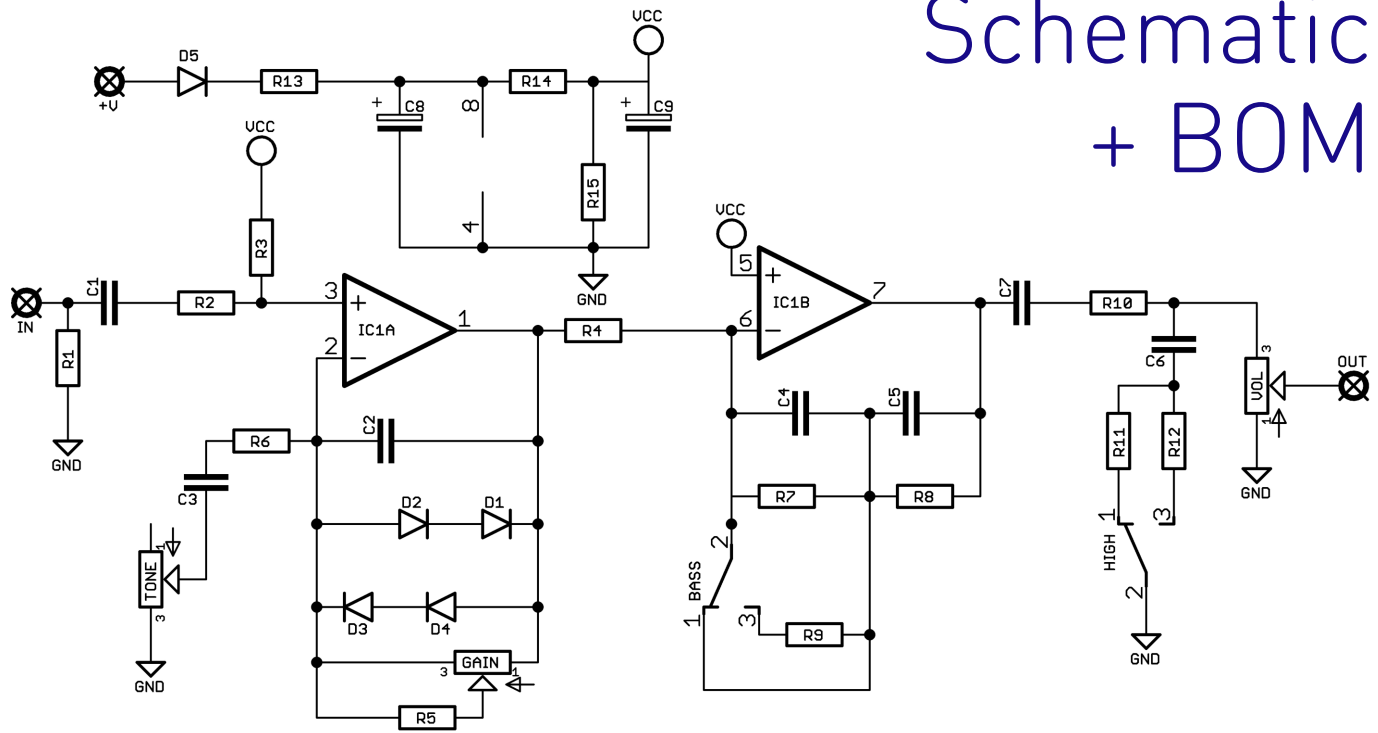


Before you dig in, ensure you download and read the **General Build Guide**.

It contains all the information you need for a successful outcome.

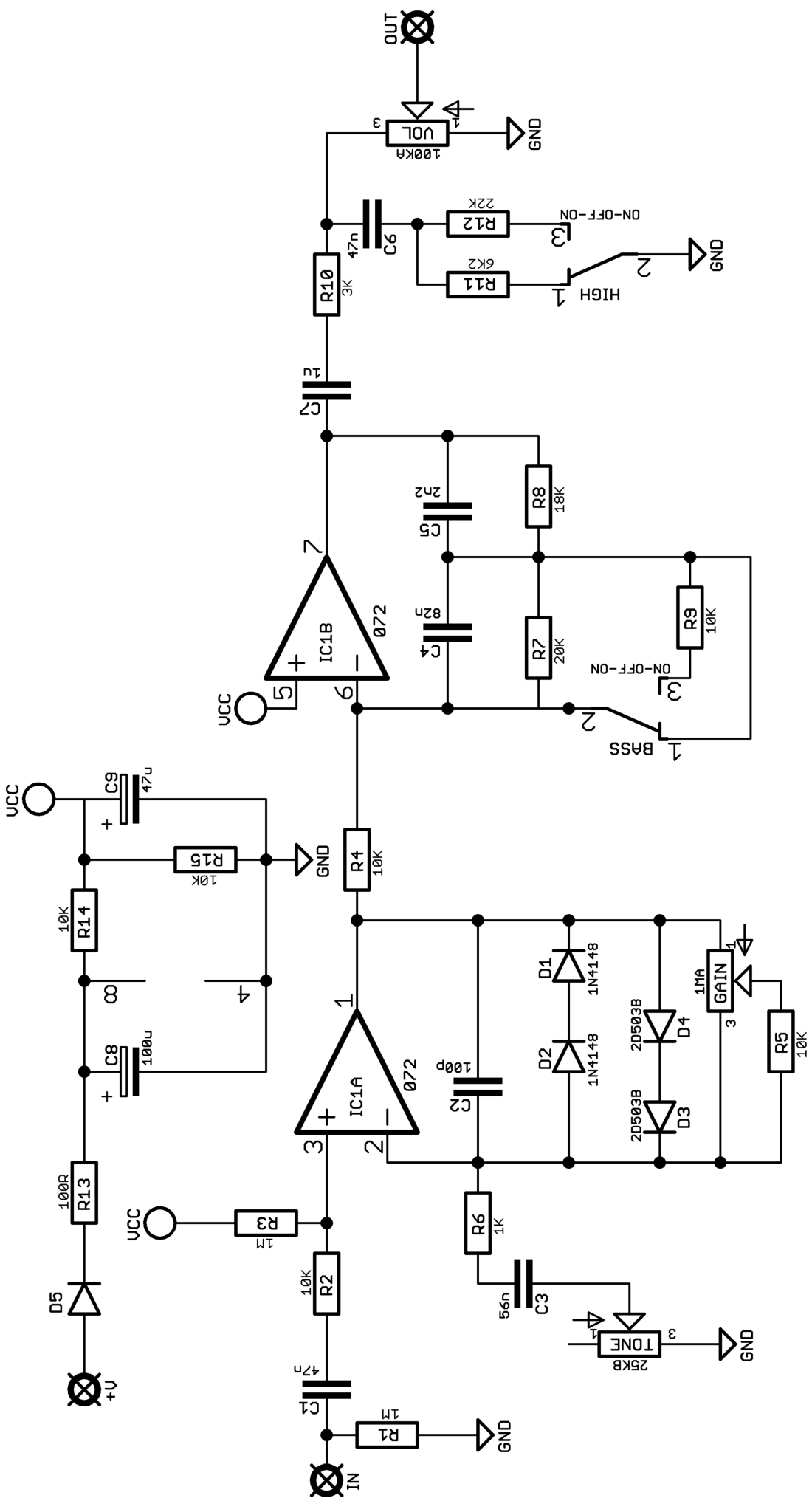


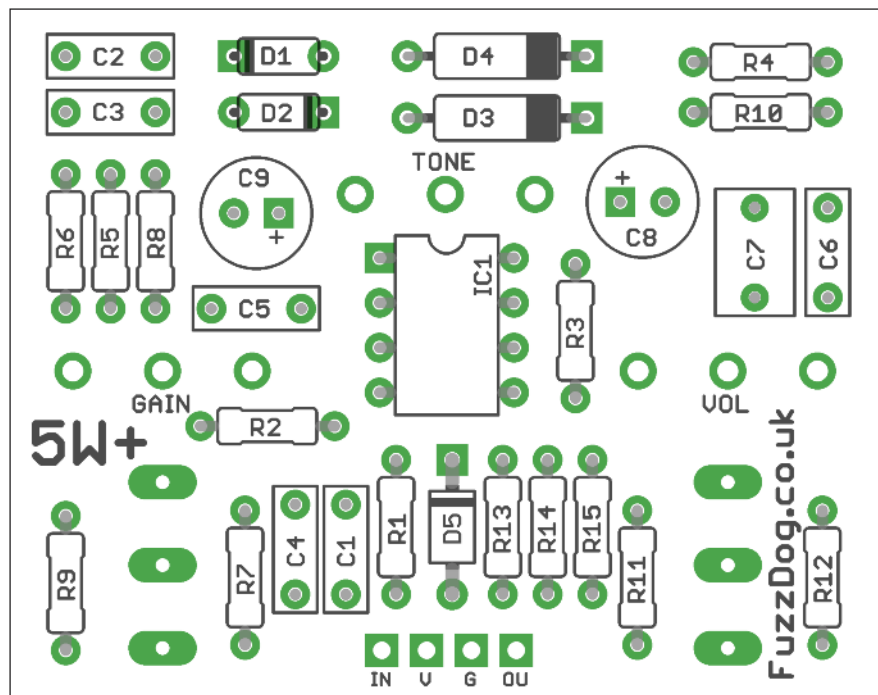
Schematic + BOM



R1	1M	C1	47n	D1-2	1N4148
R2	10K	C2	100p	D3-4	2D503B*
R3	1M	C3	56n	D5	1N5817
R4	10K	C4	82n	IC1	072
R5	10K	C5	2n2	GAIN	1MA
R6	1K	C6	47n	TONE	25KB
R7	20K	C7	1u	VOL	100KA
R8	18K	C8	100u elec	BASS	SPDT ON-OFF-ON
R9	10K	C9	47u elec	HIGHS	SPDT ON-OFF-ON
R10	3K				
R11	6K2				
R12	22K				
R13	100R				
R14	10K				
R15	10K				

*Mojo clipping diodes that'll make little difference other than looking swish. The curve isn't so different to 1N4148.

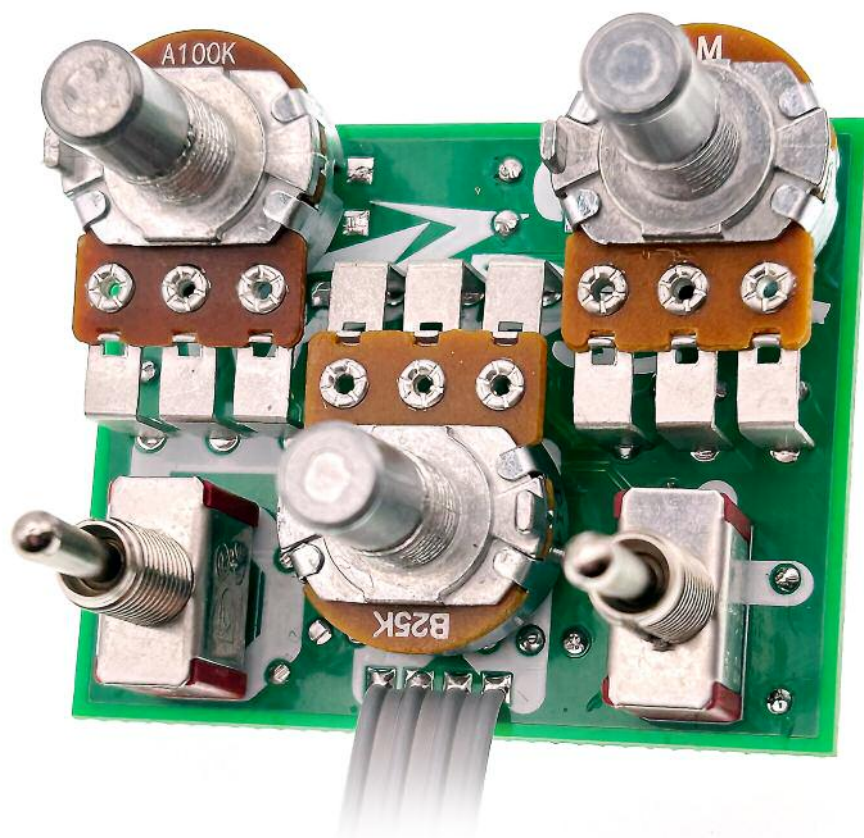




Snap the small metal tags off the pots so they can be mounted flush in the box.

You should solder all other board-mounted components before you solder the pots.

Once they're in place you'll have no access to much of the board.



Drilling template

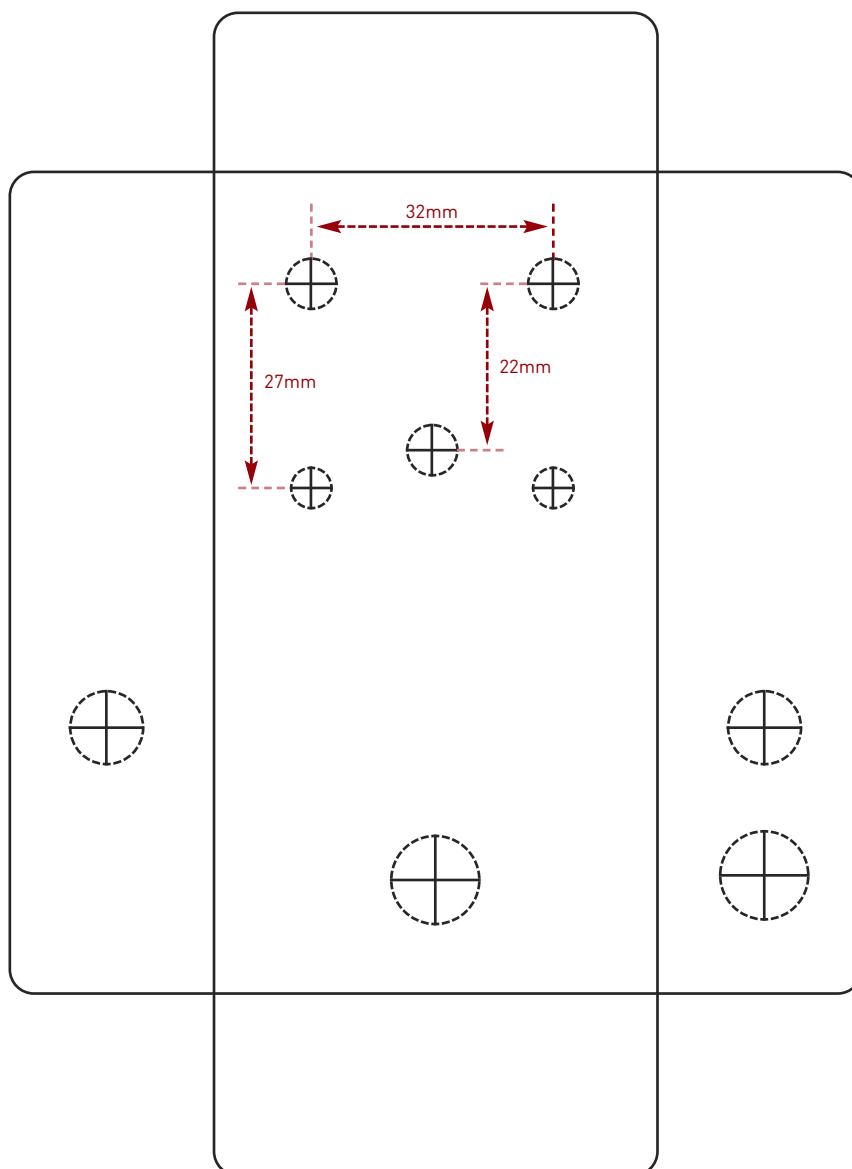
Hammond 1590B - 60 x 111 x 31mm

Drill sizes listed are minimum.

It's a good idea to add 1mm to anything mounted on the PCB that'll poke through the front of the enclosure.

Drill sizes:

Pots	7mm
Jacks	10mm
Footswitch	12mm
DC Socket	12mm
Toggle switches	6mm
Rotary switches	10mm



This template is a rough guide only. You should ensure correct marking of your enclosure before drilling. You use this template at your own risk.

Pedal Parts Ltd can accept no responsibility for incorrect drilling of enclosures.

FuzzDog.co.uk